

PUBLIC STAMP AUCTION



**SATURDAY 25TH MARCH 2023 - 12.00 NOON
AT THE WEST PLAZA HOTEL, WELLINGTON, NZ**

MOWBRAY COLLECTABLES



Lot 179
SG 1 Est \$12,500



Lot 180
SG 2 Est \$10,000



Lot 201
Est \$10,000



Lot 219
SG 43 Est \$15,000



Lot 445
1d Claret Est \$15,000



Lot 557
12/6 QVLT Est \$30,000



ex 1



ex 4



ex 5



ex 6



ex 7



ex 8



ex 13



ex 10



ex 14



ex 15



ex 19



ex 20



ex 21



ex 24



ex 25



MAJOR INTERNATIONAL PUBLIC STAMP AUCTION

Saturday 25th March 2023

commencing 12 noon

West Plaza Hotel, Wellington, New Zealand

Welcome to our 42nd sale. This bi-annual auction comprises about NZ\$850,000 of estimates. We are honoured to feature stamps from several major collections of outstanding quality, including the wonderful collection of a private collector, and over 100 other vendors.

- 138 collections including 40 New Zealand; including wonderful 1887 World album (lot 2).
- Over 2,250 FFQ's, including 2 x SG 1; magnificent block of 6d imperf mint (lot 219); SG 2 mint (lot 180).
- Remarkable assembly of QV Specimen overprints 186 stamps (lot 304).
- A further strong offering of NZ FDCs ex Horrell. These sold well above estimate in our last sale.
- 2 x 1906 Penny Clarets (1 really cheap, 1 MUH - lots 444/5).
- 1925 12/6d QVLT mint; estimated low at vendor's request (lot 557).
- 1931 35/- Arms MUH (lot 562).
- Malcolm Millar's extensive NZ Flight Cover collection (lot 620).
- Barry Smith's exhibit of commercial Propellor Aircraft (lot 622).
- Samoa 1847 Missionary Entire (lot 636).



We are certain that there is something for everyone in this sale, with conservative estimates to attract bidding.

To those clients looking to widen their collecting interests or start a new field, there is a wide range of collections which provide a wonderful opportunity to form the start of a significant collection.

The market remains strong after a good recovery from the Covid lockdown. Overseas bidders please note that the mails are still very slow and unreliable, so please send your bids by email, via the website, fax or phone through to us, if possible.

We introduced live online bidding through Auction Mobility (see page 3) in our previous Public Stamp Auction, and are pleased to offer this facility again. With postal delays world-wide, we strongly recommend you email your bids, or use the online bidding platforms.

We urge collectors planning to attend this sale not to leave their viewing until the day of the sale as not too many people can view the same item simultaneously – so come on the Thursday or Friday – or arrange to view prior to Tuesday 21st March at our premises in Otaki. We are only 50 minutes from Wellington Airport and ten minutes from Waikanae commuter railway station. We can pick you up from either (by appointment only).

Like last year's sale we expect a huge interest with a large number of room bidders. My thanks go to Chris Burt, David Smitham, Graham Burnett, Alan Jackson and Ken Markham, who have produced another great catalogue for our 42nd sale, ably assisted by our office staff of Maree Malin, Jan Macdonald, Kirsten Fulford, Keren Malin, Jane Smelt and Jackie Job. We look forward to your participation in this sale and wish you well with your bidding.

John Mowbray

MOWBRAY COLLECTABLES

Private Bag 63000, Wellington 6140, New Zealand

Phone +64 6 364 8270, Fax +64 6 364 8252

Email auctions@mowbrays.nz, Website www.mowbraycollectables.com

Live Online Bidding

Live online bidding during the auction is available. You can bid prior to, or LIVE during the auction via either a mobile app (IOS or Android) or your desktop computer/laptop, allowing you to bid from anywhere, and follow the auction progress online. (Official auction results will be included in advice from Mowbray Collectables).

Visit our website to register www.mowbraycollectables.com

Please note that a 3% surcharge will apply to all successful bids placed through the Auction Mobility bidding facility.

You can still place pre-auction absentee bids by the usual methods including via our home website www.mowbraycollectables.com.

Please don't hesitate to contact us for any questions about bidding.

Coin, Banknote & Medal Auction

Friday 24th March 2023

Commencing 12 noon

Our big \$480,000 Coin, Banknote & Medal Auction has a number of items which will appeal to stamp collectors:

- The Gerald Elliott collection of personal stamp medals awarded to Gerald as exhibitor or Juror. Lots 91-99.
- Postal Notes ex a prominent collector - 6 lots including rare proofs of the first postal notes of 1894 intended for use as currently after the banking crisis. Lots 127-132.

Also in the auction we have a lot of gold - 160 lots - with estimates exceeding \$220,000.

View the catalogue online at
www.mowbraycollectables.com

VISIT OUR WEB-SITE TO VIEW THE CATALOGUE AND PLACE BIDS:
www.mowbraycollectables.com

INSPECTION OF LOTS

At the premises of Mowbray Collectables, Main Highway, Otaki, by appointment: from about Monday 20th February to Tuesday 21st March during normal office hours;
at the West Plaza Hotel, Wellington: Thursday 23rd March - 10am to 5.30pm,
Friday 24th March - 9am to 5.30pm, and Saturday 25th March prior to the Auction - from 9am.

BIDDING

Bids can be placed live during the auction via our live bidding platform (see page 3).
Otherwise by mail, phone, fax or email - such bids should be received in our office no later than 8am NZ time (GMT + 12 hours) Saturday 25th March (at your risk if not received in time). Due to mail delays, please send bids by email, phone, fax or via the website. Telephone bidding may be made during the auction by prior arrangement only.

BUYERS PREMIUM

Buyers Premium of 17% (plus GST on buyers premium for NZ buyers) will be added to the hammer price of each lot. (All buyers please note: no GST will be added to the *hammer price* of lots).

ESTIMATES ARE IN NEW ZEALAND DOLLARS

EXCHANGE RATES

At time of going to press and subject to change: NZ \$1 = UK 52p, USA 63c, Euro 59c, Australia 91c

PHOTOCOPIES/SCANS OF LOTS

Available on request. We can supply representative images of bulk lots or collections.

ALL LOTS ARE ILLUSTRATED ONLINE www.mowbraycollectables.com

WE ACCEPT ALL MAJOR CREDIT CARDS

Credit card payments incur a surcharge of 2% for Visa, Mastercard and American Express.

BIDS UNDER 70% OF ESTIMATE WILL NOT BE ACCEPTED

This is the minimum reserve on all lots. No vendor bids shall be accepted.

Mowbray Collectables - Registered Auctioneers

UNCONDITIONAL GUARANTEE

Every individual lot in this auction is unconditionally guaranteed to match the description & be genuinely as described. Any lots found not to match our description may be returned within seven days for credit or refund.

This guarantee does not extend to collections or mixed lots.

YOU CAN BID IN OUR SALES WITH CONFIDENCE

EXPLANATION OF SYMBOLS & ABBREVIATIONS

| | | | | | |
|-----|-----------------------|-----|-------------------------------|-----|------------------|
| * | Mint never hinged | / | Mint & used | pmk | Postmark |
| MUH | Mint never hinged | L | Label | h/s | Handstamp |
| M | Mint hinged or unused | F | Forgery | b/s | Backstamp |
| FU | Fine Used | C | Cover/Postcard/Entire | FDC | First day cover |
| GU | Good used | cds | Circular date stamp | P | Proof |
| U | Used | m/s | Manuscript OR Miniature Sheet | PPC | Picture Postcard |
| PU | Postally used | CTO | Cancelled to Order | H/H | Heavily Hinged |
| o/c | Off centre | SG | Stanley Gibbons | MNG | Mint no gum |
| OG | Original gum | CP | Campbell Paterson | R | Revenue |
| E | Essay | BW | Brusden White | | |

COIN & BANKNOTE PUBLIC AUCTION

Our 30th Coin & Banknote Auction is on Friday 24th March 2023 commencing at 12pm at the same venue. View catalogues online at www.mowbraycollectables.com

CONDITIONS OF SALE

1. INSPECTION : No lot is available for inspection by post.
2. EXTENSION: extensions for certificates will only be granted on application prior to the conclusion of the auction. John Mowbray International will submit all items so requested by successful bidders to the reputable authority of their choice, in most instances this would be the Royal Philatelic Society of New Zealand, or the Royal Philatelic Society, London. The cost of certification + postage and handling will be charged only if the relevant clear certificate has been received.
3. BIDDING
 - 3.1 Bidding either in absentia or in the room will bind the bidder to these conditions of sale.

Subject to any reserve price, the highest bidder shall purchase the lot: any dispute arising as to who is the highest bidder shall be determined by the Auctioneer who may offer the lot again.

The Auctioneer may group, split up or withdraw lots, and transfer bids to identical lots at his discretion.
 - 3.2 Bidders shall be deemed to purchase as buyers unless prior to bidding they have given the Auctioneer a copy of a written authority to bid on behalf of another person.
 - 3.3 Where an agent purchases on behalf of an undisclosed client, such agent shall be personally liable for payment of the purchase money to the Auctioneer and for safe delivery of the lot to the said client.
 - 3.4 Vendor bids shall not be accepted.
4. BIDDING INCREMENTS: Postal bids must comply with the following steps:

| | |
|-----------------------------------|--|
| Under \$250 - \$10 increases | \$5,000-\$10,000 - \$250 increases |
| \$250-\$1,000 - \$25 increases | \$10,000-\$20,000 - \$500 increases |
| \$1,000-\$2,000 - \$50 increases | \$20,000 and above - \$1,000 increases |
| \$2,000-\$5,000 - \$100 increases | |
5. ABSENTEE BIDDERS: Bids will be accepted from persons unable to attend the auction, and their bids will be treated in utmost confidence and managed as though the bidder is in the room. The Auctioneer shall not be liable for errors or omissions in executing bids. **Live online bidding** is possible through Auction Mobility, through our website. An extra 3% charge applies to all successful Auction Mobility bids.

Absentee bidders, who have not seen the lots they are buying, may reject any lot with the exception of bulk or mixed lots and collections, where the description is not in accordance with that given in the catalogue. However, any such lots are only returnable within seven days of receipt, and in the condition received.
6. ESTIMATES: These are conservative. Bidding will commence at a bidding increment over the second highest postal/ absentee bid received prior to commencement of the auction. Where one or no bids have been received, bidding will commence at seventy percent (70%) of the lot estimate.
7. PAYMENT: Lots will be at the buyer's risk from the fall of the hammer but title shall not pass until payment in full has been made of the purchase price (hammer price plus 17% buyer's premium (plus GST on buyers premium for NZ buyers) and, if applicable, interest). Payment and clearance of lots by room buyers may be carried out on the day of the sale. Payment by absentee bidders must be made upon receipt of invoice. Payments not received within 30 days of auction date may be subject to 2% penalty interest per month from the auction date.
8. No GST is charged on the hammer price, but purchasers outside New Zealand undertake that neither they or an associated person will cause the goods to be re-imported into New Zealand in substantially the same condition in which they were exported.
9. FAILURE TO PAY: If the buyer breaches Condition 7, the Auctioneer, without prejudice to any other rights available to it, shall be entitled without notice to the buyer to exercise one or more of the following rights and remedies:-
 - 9.1 to terminate the contract with the buyer and any monies which the buyer has paid to the Auctioneer on account of such purchase or purchases shall be forfeited;
 - 9.2 to terminate the contract, resell the lot at any time by public auction and the buyer shall pay to the Auctioneer any resulting deficiency in the purchase price (plus interest) and insurance. Any surplus shall be paid to the vendor;
 - 9.3 to apply any monies at any time due by the Auctioneer to the buyer in payment of the purchase price (plus interest). The Auctioneer shall have a lien over any property of the buyer in the possession of the Auctioneer, in order to secure any monies due to the Auctioneer; and
 - 9.4 to proceed against the buyer for damages for breach of contract.
10. The Auctioneer reserves the right to refuse admission to any person to either viewing or the sale room, and the Auctioneer may refuse any bid.
11. GOVERNING LAW: These conditions shall be governed by and constructed in accordance with the laws from time to time in force in New Zealand and the parties hereto irrevocably submit to the non-exclusive jurisdiction of the Courts of New Zealand.

COLLECTIONS & ACCUMULATIONS

| | | |
|----|--|---------|
| 1 | / An extensive old time stamp dealer's remnant accum NZ & World with some gems scattered amongst more ordinary material. Noted in no particular order: NZ 1948 29 June Express Delivery cover (2nd last day of use); Red & Blue Boys FU; Dunedin Exbn set FU; Rhodesia 1905 Victoria Falls set mint; 1946 Manawatu Rail accident cover; Pathway plain FDC; many hundreds interesting NZ & World p/cs (with many early 20th Century real photos); several books incl RPSNZ Handbooks Vols 2, 7 & 8 plus Joliffe's 1915 book with 2d FFQ reprints. | \$1,250 |
| 2 | / A World c1840s-1910s old time mint & used colln in Stanley Gibbons Improved album (pub 1887) with brass clip. Extensive seln incl GB, noted: good seln QV, surface & EVII; NZ noted: good range FFQs incl several m/s cancels, Christchurch Exbn x 2 sets mint, Auckland Exbn set mint (1d double gum); Australia & States noted: Roos 1st wmk set to 2/- brown mint; Canada & Provinces noted: Jubilee 8c - 50c & \$2 used, QV 2 Maple Leaves ½c-2c red, 5c, 8c, 10c & 20c mint, 1893 50c blue mint; USA noted: Columbian Expo 6c, 8c & 10c mint & 50c Trans-Mississippi used, Hawaii useful mint & used; South Africa Provinces incl CGH 2 x triangulars, 5/- Hope mint, 5/- EVII mint, Natal 5/- GV mint; also extensive Europe & other British Empire with many classics. About 2500 stamps. Despite the album being slightly dilapidated a remarkably high percentage of the stamps are in very good mint cond. Massive cv. Also 2 other old albums & small bundle of covers & cinderellas. | \$5,000 |
| 3 | / A World-Foreign c1850s-1930s old time mint & used colln in 10 springback albums - wide range of countries incl many classics but also many reprints etc. Noted France, USA, Italy & Colonies, Persia, Hungary, Germany & Colonies, Switzerland, South & Central America. Maybe 5000 stamps. Well worth inspection despite rough presentation. | \$1,000 |
| 4 | / Aitutaki 1903-95 comprehensive near complete mainly mint & CTO colln on pages. Noted: 1914-6 EVII 6d & 1/- MUH; 1981 Birds set of 36 mint; 1983 Birds & Diana surcharge set of 19 mint; 1984 Birds sets of 20 mint & CTO; 1987 Hurricane Relief Fund sets of 11 mint & CTO; OHMS (1978/79 sets of 16 & 1985/90 sets of 25 mint & CTO). SG cat £2100+. | \$750 |
| 5 | / Australia 1913-c1980 nearly all used colln on pages & several packets, mostly complete colln. Noted 40 plus Roos to £2 (£1 grey GU faults, £2 FU minor faults); GV 100+; 5/- Bridge CTO FU; most other key 1930s commems; Navigators (£2 mint); perfined small 'OS's nearly complete (Roos to 5/-) etc. | \$2,000 |
| 6 | / Australia 1913-92 collns nearly all mint/MUH in Davo hingeless album (1913-65), Kabe hingeless album (1979-92) & Hagner album (1920s-79 plus Dues from 1902). Noted good range Dues (m&u); various Roos to 10/- (FU); several useful 1930s commems; commems virtually complete MUH 1960s-79 & FU 1979-92. | \$1,000 |
| 7 | U Australian States c1850s-1900s used seln on Hagner - Queensland x 3, South Australia x 4 incl 2 imperf & 2½d "OS" ovpt invtd FU; Victoria x 6 incl 3 imperfs; Tasmania x 18 incl 8 imperf (incl 4d octagonal cut square) & also noted 1897 £1 green & yellow with nice Zeehan JU 30 00 cds. High CV. | \$750 |
| 8 | / Australian States 1850s-1900s colln of 500 mint & used on 43 pages. Comprises: NSW x 95 (24 mint); Queensland x 94 (32 mint); South Australia 65 (25 mint incl 1875 1d blue-green p10 & 9 diff vals of 1902-04 set up to 2/6d; Tasmania x 48 (20 mint); Victoria x 158 (19 mint) & Western Australia x 47 (12 mint). SG cat £3700+. Mint & GU/FU. | \$750 |
| 9 | U Australian States-NSW 1850-c1854 used seln on Hagner type sheets - Sydney Views 2d & 3d x 2; Laureate issues: 1d x 5, 2d x 55, 3d x 8. Range of shades, plate wear & both unwmk & wmk issues. Most appear to be at least 3 margins. | \$1,000 |
| 10 | / Australian States-NSW 1850-c1905 nearly all used colln on pages starting with 1d, 2d & 3d Sydney Views, incl another 17 imperfs & about 175 perf stamps. Incl many high cv items but mixed cond with at least one forgery. Plus another 4 misc in envelope. | \$900 |
| 11 | / Australian States-Queensland 1862-1900s nearly all used colln on pages - 136+ stamps incl about 30 chalons. Good seln but mixed cond. High cv. | \$500 |
| 12 | / Australian States-South Australia 1855-1900s nearly all used colln on pages - starts with 2d & 6d London prints - about 150 stamps, plus about another 25 on stock sheets. Mixed cond but high cv. | \$500 |
| 13 | / Australian States-Tasmania c1853-1900s nearly all used colln on pages - incl 10 imperf (noted 4d octagonal cut square, closed tear) & 100+ perf (noted 1892 short set of 8 to 5/-). Plus 20+ stamps on stock cards. Mixed cond but high cv. | \$850 |
| 14 | / Australian States-Victoria 1850s-1900s nearly all used colln on pages. Good range incl about 30 1850s issues, also noted 1897 2½d (2/6d) Charity stamp on cover (stamp over edge). Total about 300 stamps. Also about 20 stamps on stock cards. Mixed cond but high cv. | \$1,750 |
| 15 | / Australian States-Western Australia 1854-1900s nearly all used colln on pages - noted 1d black imperf, 1d black (rouletted 1 side), 2d brown-black, 4d blue, 2d orange, all imperf plus about 125 stamps. Mixed cond (incl itemised stamps). High cv. | \$500 |

| | | | |
|----|----|---|---------|
| 16 | / | Austria c1963-2001 collns in 5 hingeless albums (some overlap of contents), good range, excellent cond nearly all MUH (a few FU). Noted some useful m/ss. Many hundreds. Mint/MUH/Used. | \$1,000 |
| 17 | / | Belgium 1849-1993 extensive colln comprising 2 Davo hingeless albums in slipcases for 1849-1969 mint & used, 1970-87 used on pages, 1989-93 MUH in small stockbook, seln of "back of book" issues on pages. Also incl new empty standard Davo album for 1995-2010 issues. Noted: 1849 10c brown (SG3) GU 3 margins, 1914 & 1915 Red Cross Fund sets mint, 1950 European Athletics set & m/s MUH, 1951 Queen Elizabeth Fund set mint, 1952 UPU Congress 10f, 30f mint, 1954 Prisoners' Monument Fund sets mint & used, 1958 King Baudouin 7f50, 9f mint, 1960 Refugee Year m/s MUH, 1882 Railway Parcels 50c rose-carmine mint. Good for completion/continuation. SG cat £7,750. | \$2,300 |
| 18 | M* | Belgium c1910-74 colln in 2 Davo hingeless albums (pages from 1849) mint, all appear MUH from c1960s, mostly complete from mid 1930s. Also L/H hingeless album 1971-84 apparently complete MUH colln. | \$1,500 |
| 19 | U | British Commonwealth 1840-1936 colln of 2800 diff used in 2 volumes SG New Imperial illustrated albums for GB & British Empire. Noted GB 1840 1d Black 4 margins red MC x 2 (plates 4 & 5), 1864 1d red 146 of 151 plates (excl 275), 1856 1/- green, 1867 10d & 2/- blue, 1876 8d orange, 1883 10/- ultramarine, 1883-84 lilac & greens set (excl 9d), 1887 Jubilee set of 14, 1902 EVII 2/6d & 5/-, 1934 Seahorses re-engraved set, Australia 1932 10/- Roo, Cape of Good Hope 1864 1d red triangular, Gibraltar 1886 1/- ovpt, NSW 1897 Charity stamps set, NZ 1857 FFQ 6d brown imperf, Queensland 1960 1d red imperf, South Australia 1857 6d slate-blue & 1874 1d green Official. Weighs 4.5kg. SG cat £20,000+. GU/FU. | \$5,000 |
| 20 | / | British Commonwealth c1890s-1960s mostly mint seln in s/b. Noted: PNG 1952 Picts set mint, NSW 1897 5/- reddish purple mint; FID 1954 Picts set MUH; Australia 1948 £2 Arms mint; plus good seln Norfolk Isl, Australian States; SWA bilingual pairs etc. About 350 stamps. Good cv. | \$500 |
| 21 | / | British Commonwealth c1890s-1970s mostly mint/MUH colln on Hagners. Noted: good range GB (QEII commems; Bahamas 1948 Tercent set (but no 10/-) MUH; 1942 Columbus set (£1 tropicalised gum); Basutoland 1954 Picts set; Bechuanaland 1938, 1955 Picts sets; Malta 1938 Picts set; Mauritius 1953 Picts set with good shade vars; Northern Nigeria good range; Nigeria 1936 Picts SG 1 (plus 1½d p12½ x 13½ MUH); Rhodesia & Nyasaland 1954 Picts set (MUH); 1903 EVII set; Southern Rhodesia 1953 Picts set; Swaziland 1938 GVI set plus shade/perf vars etc. About 1500 stamps. Good cv. | \$1,750 |
| 22 | M | British Commonwealth 1935 Silver Jubilee omnibus, appears complete (250 stamps) mint on pages. Black page adhesions (if removed from pages as several sets have already been removed from the pages). Plus maybe 75 duplicates incl many used on s/b pages. SG cat approx £1750. | \$575 |
| 23 | / | British Commonwealth 1948 Silver Wedding omnibus complete mint, some high values MUH (incl Hong Kong) but others no gum. Also additional SWA bilingual set & GB set FU. SG cat £2290+. | \$1,000 |
| 24 | / | Canadian Provinces 1851-1940s incl Colony issues, untidy mint & used collns on pages & in packets. Incl Colonies x 17 (noted 10d Cartier small repairs); Brit Columbia/Vancouver Isl x 6, Prince Edward Isl x 19; Nova Scotia x 14 incl 5 heraldic flowers/chalon; New Brunswick x 18 incl SG 4 (BPA cert 1964) cut into & thinned; Newfoundland x about 250 noted many good items incl from the early sets. Huge cv but very mixed cond. | \$2,500 |
| 25 | / | Canada 1868-1980s colln on pages mostly used. Noted about 50 QV heads, Jubilee short set to 50c (2c-5c, 15c used, rest mint); Quebec set (mix mint/no gum/used); nearly all key 1920s-30s commems; also good range Special Delivery, "G" ovpt Officials etc. | \$1,500 |
| 26 | / | Canada 1870s-1989 colln in L/H hingeless album pages (1851-1984) with slipcase & L/H album (blank pages stamps in mounts) earlies mostly used then mint (MUH from c mid 1970s). Noted: 1897 6c Jubilee (mint); 1908 10c Quebec FU; 50c EVII GU; key 1930s commems mostly complete used; some GV-QEII defin perf vars; appears complete from c1949 with many 1980s blocks. | \$1,000 |
| 27 | M* | Canada 1952-87 extensive/comprehensive nearly all mint/MUH colln in 9 springback albums, every issue as single & plate block (some earlier blocks of 4 only). Many thousands stamps, high CV/FV. | \$1,150 |
| 28 | / | China c1950-94 colln in 3 s/bs - wide range of mostly MUH/unused no gum as issued sets with a few used sets. Noted MUH sets: 1972 Canal; 1973 Pandas; 1978 Horses m/s; 1978 Faeres m/s; 1979 Camelias & Great Wall incl m/ss; 1980 Lotus m/s; 1983 Terracotta Warriors booklet; 1984 Beauties Wearing Flowers m/s; 1987 Literature m/s; 1987 Murals incl m/s; 1988 Literature incl m/s. FU 1960 Chrysanthemums; 1963 Landscapes sets. Some early sets are official reprints; also colln is interspersed with Taiwan & a few Korean stamps. High cv. | \$1,500 |
| 29 | / | Cook Isl 1892-1919 seln of 40 mint & 19 used on pages. Noted: 1892 Federation (1d, 1½d x2, 2½d x 2 & 10d x 2, all with black circ pmks), 1893-1900 Queen Makea/tern p12 x 11½ & p11 mixed mint & used sets incl 10d p12 x 11½ mint & 1/- deep carmine p11 mint, 1901 Queen Makea 1d brown with crown ovpt MNG, 1902 NZ & star wmk set of 9 mint, 1913-19 chalk surfaced paper mixed mint & used set of 6. SG cat £1600+. | \$750 |

| | | | |
|----|---|--|---------|
| 30 | / | Cook Isl 1892-1993 comprehensive near complete mainly mint colln on pages. Noted: 1892 Federation set (2½d & 10d FU); 1921 postal fiscals to 5/- (2/6d FU); 1936 Arms £1 MUH; 1949 Picts set mint & FU (3/- toned); 1963 Picts set mint & FU. Mint sets: 1967 Pict decimals, 1974-5 Shells set of 22, 1980-2 Corals set of 77, 1983 Corals surcharge set of 30, Feb 1987 surcharge set of 60, OHMS (1978-9 set of 16 & 1985-90 set of 22). SG cat £3000+. | \$1,000 |
| 31 | / | Cook Isl, Aitutaki, Penrhyn, Niue 1902-32 mint/MUH old time written up colln on pages, good coverage of all issues with many blocks & some part sheets. Incl plate blocks, GV 2 perf pairs, ovpt errors/flaws etc etc. Picked over & most of the items affected by toning, some very heavy but enough retrievable to justify estimate. Total about 220 items - over 1000 stamps. High cv. | \$750 |
| 32 | / | Cyprus 1880-1980 colln of 250 mint & used in 8 leaf/16 page Lighthouse s/b. Some dupn. Noted 1881 ½pi emerald-green GU, 1892 4pi pale olive-green FU, 1906 12pi chestnut & black FU, 1935 Silver Jubilee set mint, 1938-51 GVI set mint (minus 1½pi carmine & 2½pi ultramarine) & used. Also incl W Castle "Cyprus Postal History of Postage Stamps" 2nd edition 1971. SG cat £900+. | \$375 |
| 33 | / | Czechoslovakia 1937-90 seln of 190 diff mint & used & sheetlets in s/b & on Hagner pages. Incl 1955 National Costumes 2k sheetlet of 10 used, 1959 Birds set sheets of 10 x 7 used, 1961 Butterflies/Moths set sheetlets of 10 x 9 used, 1966 Art set sheetlet of 4 x 5 mint, 1975 General Svoboda imperf m/s MUH & 1983 Art set sheetlets of 4 x 5 MUH. Small no of sheets affected by toning. | \$500 |
| 34 | / | Czechoslovakia 1945-80 extensive near complete colln of mint & used in 213 page illustrated Schaubek album. Incl 44 m/s: 1945 Slovak Rising, 1950 Philatelic Exbn (MUH & used), 1955 Philatelic Exbn perf & imperf (with mint singles of both), 1962 Internat Stamp Exbn perf & imperf & 1985 General Svoboda perf & imperf (all MUH). Also incl seln of 1929-30 used, 1930-49 mint with labels, 1945 & 1947 official mint sets, 1919-72 P Dues, 1920 East Silesia, 1939-44 Bohemia & Moravia (incl near complete 1939 set of 19 MUH) & seln of Slovakia (1939-80s) on pages. Weights 4.8kg. | \$1,000 |
| 35 | / | Danish West Indies 1855-1908 generally FU colln (with 3 mint) on Hagners, from 1855 3sk with deep brown gum SG 3, 1873-1902 all vals except 14c, 1896-1902 set with 2 x 4c bisects on piece, 1900 set, 1905 surcharges, 1907-8 set. 55 stamps. (SG 2018). | \$700 |
| 36 | / | Egypt c1940s-2006 colln/accum in large s/b very good MUH range from 1987-2006 with dupn & seln of earlier issues at back with a few covers. Well over 1500 stamps. High cv. | \$400 |
| 37 | * | Europe 1949-2002 Davo Europa hingeless albums x 2: 1) European based organisations 900+ stamps, near complete. Noted European Recovery Plan sets (Italy & Trieste), 1950 European Recovery Programme stamp (Germany-Berlin), 1950 European Tobacco Conf sets (Italy & Trieste), 1950 Council of Europe admission set (Saar), 1950 European Athletics Championship set & m/s (Belgium), 1951 Promoting United Europe 2f50 (mint) & 4f (minor adhesions on front), (Luxembourg) & 1956 European Coal & Steel Community set (Luxembourg). 2) 750+ stamps & 35 m/s covering Europa issues from 1987-2002. Weights 5.6kg. SG cat £4000+. MUH. | \$1,250 |
| 38 | / | Fiji 1878-98 colln on Hagners, VR issues: 22 mint, c200 used (incl c90 4d & 6d values), 1/- x 23, 5/- & a few ovpts. Also c70 1d very pale ultramarine MUH/mint (presumed faded); 1891-98 issue c60 mint, 140 used (eg: incl 5d x 5 mint, 11 used). Various perfs & shades in both issues noted. SG cat £2000+ (excl faded) (SG 2018). | \$600 |
| 39 | U | France 1849-1975 in 2 Warwick SS albums. Noted: 1849 Republic: 10c bistre Ceres (£700); 25c blue Ceres x 2 (£2,400); 40c orange Ceres (£1100) small corner tear; Empire imperfs (£1160); 1936 500F (blue & pink airmail). Vol 2 reasonably complete. Mixed condition & dupn. SG cat £15,000+. Mostly used. | \$2,300 |
| 40 | U | GB 1840-1970 colln in Davo hingeless album with slipcase, virtually all used to 1920s then nearly all mint (MUH from c1950s). Noted used: 1d Black (3 margins) stained; reasonable range QV (no high vals) incl officials. Mint: most QEII early commem phosphors; Postage Dues apparently complete 1937-69. Some minor toning. | \$575 |
| 41 | / | GB 1840-1980s mostly used colln on pages & bundle in envelopes on stockcards etc. Noted 1d black x 3, 2d blue x 2, imperf 1d reds x about 30 incl numeral MC cancel; 6d, 10d & 1/- embossed cut square; good range QV surface issues, £5 orange heavy repair; 6d & 9d green "Govt Parcels" FU (good colour); £1 Seahorses FU (expert repairs); £1 PUC (small repaired corner); about 50 Official ovpts (incl 5 x "OW" Officials), ½d & 1d Army "OFFICIAL" errors (mint). | \$6,600 |
| 42 | / | GB 1841-1986 colln in Kabe album, all stamps in mounts, mix mint and/or used. Noted: Incl good range QV surface used; QV Jubilee set incl 1/- green & red MUH (except 1/- green gum adhesions); 10/- EVII FU (perfinned); 1924 Exbn set MUH, 1925 Exbn set FU; QEII era virtually complete. | \$1,500 |
| 43 | C | GB 1844-93 covers x 11, interesting range of stamps, postal markings, destinations etc. Noted 1865 entire to Valparaiso (Panama) with 1/- (SG 101) but also other stamps excised; 1881 envelope to NZ, addressed to "Dry River Station, Waihenga" (near Martinborough) with 1/- brown (SG 151) etc etc. Mixed cond but interesting lot. | \$500 |

| | | | |
|----|----|---|---------|
| 44 | U | GB 1855-1873 comprehensive used colln of QV surface printed issues on 13 annotated & well written up hingeless pages. Noted: 1855-57 4d small, medium & large garter wmk & inverted wmk large garter; 1856 1/- x 2; 1862-64 (3d x 3, 6d plate 3 & 4 thick paper issues; 9d , 1/- x 2); 1865-67 3d x 3; 1867-80 (3d plate 4, 9d, 10 x 2, 2/- x 2 incl one with invt wmk (cat £950)) & 1872-73 6d grey x 2. SG cat £16000+. | \$2,000 |
| 45 | / | GB c1860s-c1999 colln in 3 Davo hingeless albums. Vol 1 sparse pre 1900, key items absent, no early phosphors (£1800+), Vol 2 & 3 appear reasonably complete MUH with various booklets & panes. Mint/MUH/used. | \$575 |
| 46 | U | GB 1887-1913 comprehensive colln of 35 QV Jubilee & 67 EVII stamps on 7 annotated, well written up Hagner pages. Noted: 1887 QV 5d die 1 x 2 & 9d MUH & 1902 EVII 2/6d x 2 GU/FU incl chalk-surface paper & 5/- FU. Colours faded on some QV & EVII DLR issues. Also incl 1883 QV 2/6d white paper FU incl blue crayon marking. | \$500 |
| 47 | M* | GB 1904-1967 comprehensive colln of over 200 unused EVII to GVI era "controls" on 20 hingeless pages, mostly singles incl GV 3d royal cypher wmk with B.13 control & right-feed vert comb perf (cat £100) & 1929 PUC singles x 4 (cat £80). Also incls QEII Wilding sets, 1959-68 Castles DLR MUH set, together with (cv £395) & over 20 plate no. Wilding stamps (mostly singles) on 12 hingeless pages. | \$500 |
| 48 | / | GB 1910s-1950s neat colln EVII set of 15 to 1/- mint, GV block wmk set of 12 to 1/- mint & wmk sideways mint set to 2d. PUC upright & sideways wmk set (no £1) mint, GV photo set of 11 & sideways mint. Some later. Quality much above average for mint sets. | \$425 |
| 49 | / | GB 1952-c1970 QEII Wildings extensive collns/accums in 2 large s/b's & on several Hagners. Incl a few Regionals. Range of all printings, wmk's incl graphites & phosphors. Some annotations, huge dupn. Noted 1½d graphite mult crowns wmk x 7, phosphor/graphite presentation pack & 35 Castles incl Tudor crown issues. Also some pre decimal & early decimal Machins. Maybe 4000 stamps. MUH (a few mint) & used. Ex Jack Thornton. | \$975 |
| 50 | / | Germany-German Occup issues, Saar etc 1921-58 mostly mint/MUH collns in L/H hingeless album with slipcase - incl Bohemia & Moravia mostly complete; General Government (Poland) appears complete; Saar noted 1948 25f + 25f Flood Relief Fund m/s MUH (SG MS256a, cat £800) plus many useful mint & used items; Serbia, Luxembourg etc etc. | \$1,200 |
| 51 | / | Germany-Allied Occupation 1945-9 colln in old L/H hingeless album. Mostly mint (but often FU tucked in behind). Noted: Wurttemberg 1949 Red Cross set MUH & m/s plus other key sets MUH; Baden 1948-9 sets (PF omitted) mint & FU & 1949 Red Cross set MUH; rebuilding sets mint & FU; m/ss imperf & perf MUH plus other key sets MUH; Rhineland 1948-9 set (PF omitted) mint, Red Cross set MUH; Russian Zone: 1945 Victims set mint, etc. Nice seln, high CV. | \$1,500 |
| 52 | M* | Germany-West 1949-79 apparently complete simplified mint (MUH from about mid 1950s) colln in 2 L/H hingeless albums with slipcases, incl all the early commems. High cv. | \$2,000 |
| 53 | / | Germany-East 1949-90 appears complete colln in 3 L/H hingeless albums incl m/ss - mix mint/MUH and/or used to mid 1950s then MUH. High cv. Weighs 9kg. | \$1,350 |
| 54 | * | Germany-East 1949-90 near complete MUH colln in 2 Schaubek illustrated hingeless albums incl over 150 diff m/s, sheetlets & blocks of 4. Noted 1950-1 Wilhelm Pieck set of 5 (cf £150), 1950 Debria Stamp Exbn m/s (cf £200) & 84f + 41f single, 1954 Stamp Day m/s, 1956 official Central Courier Service 20pf (cv £225), 1962 Russian space flights m/s & 1964 German Democratic Republic 15th anniv m/s. Fine cond with no signs of toning. Weighs 8kg. SG cat £4300+. MUH. | \$750 |
| 55 | M* | Gibraltar 1953-2013 mint colln in L/H album. Seen MUH from 1971 on. Practically complete. Weighs 5kg. | \$300 |
| 56 | U | Greece 1876-1971 extensive colln of used in 79 pg annotated Editions Yvert & Tellier album. Noted 1896 Olympics set excl 5d (10d FU), 1900 25L on Olympics 401 surcharge, 1906 Olympics set (tone spots on 3d, 5d, 1937 Ionian Isl set FU, 1946-7 surcharge set of 18 FU, 1933 Air 50d brown FU, 1935-9 Air set of 9 FU & 1940 Greek Occup of Albania set of 17 CTO. Also incl s/b with approx 1000 imperf & perf Hermes head used stamps. Weighs 3.15kg. | \$1,500 |
| 57 | * | Greece 1944-90 extensive MUH colln in 114 pg hingeless illustrated Greece album. Noted: 1946 surcharges 2000d on 5000d & 5000d on 15,000d, 1947-51 Dodecanese Isl set of 23 some toned, 1951 St Paul set MNG, 1951 Reconstruction 5000d, 1953 National Products 2000d, 2600d & 5000d, 1954 Art 20,000d with patchy gum, 1954 NATO 2400d & 4000d, 1955 Art 4d & 1955 Pythagorean Congress set. Also incl 200+ diff MUH on Hagner equivs incl Oct & Nov 1933 Air sets. Weighs 3.85kg. | \$1,000 |
| 58 | M | Hawaii 1893 provisional ovpts x 21 mint - complete except no 10c red-brown with red ovpt or 6c black ovpt. Mounted on special dealer's sheet. Some adhesions & some minor perf tone. Cat approx £1275. Also 1897 Revenue Document with \$1 stamp. | \$500 |

BID BY MAIL, FAX, TELEPHONE, E-MAIL OR ONLINE AT WWW.MOWBRAYCOLLECTABLES.COM

| | | | |
|----|----|---|---------|
| 59 | / | Hungary 1871-1980 extensive near complete colln of mint/used in 320 page illustrated Minkus album. Incl over 200 diff mostly MUH m/s (incl 1934 20f mint, 1948 Air 2 + 18Fo & 3 + 18Fo MUH, 1949 3Fo x 4 perf & imperf both mint, 1949 50Fo MUH, 1951 Stamp Anniv x 3 MUH & mint) & 1931 Zeppelin set of 2 mint which by themselves have CV £4000+. Also incl seln of French, Romanian & Serbian occupation stamps & s/b with 1996-99 CTO issues incl 16 m/s. Weighs 4.4kg. | \$2,000 |
| 60 | / | Italian States 1850s-60s quality colln, mainly FU/VFU 4 margin examples & notated per Sassone (SA). Noted amongst number high cat: Lombardy 1851 15c T2 & 45c used (SA 15, 17); Papal States 1852 3 BAJ brown used (SA 4), & unused no gum (SA 14); Sardinia 40c used, dealer's cert mark on back; (SA 6); 1854 3 lira, 3 margins used, several cert marks on back (SA 18A); Tuscany 1857 1 crazi used (SA 12); 1860 80c used but cut close all round. Over 120 stamps. Sassone cat €40,000+ (excl 2nds). | \$2,300 |
| 61 | / | Jamaica c1870-c1981 colln on Hagner (plus 2 s/b incl dupn), good range mix mint & used to 1930s then nearly all mint (MUH from early 1970s). Noted 1938 Picts set mint (incl 5/- & 10/- perf vars). About 500 stamps, good cv. | \$300 |
| 62 | / | Jersey 1941-95 virtually complete colln in 2 Warwick albums incl war time issues & regionals. Also c1973 Revenue set to £50 ovpt "SPECIMEN" & 12 GB c1870s-1900s used on Jersey. Noted also booklet panes. Nearly all MUH. | \$300 |
| 63 | * | Jersey, Guernsey, IOM 1941-92 virtually complete MUH collns in L/H hingeless albums. A few stamps, eg Jersey 1941 Pictorials FU. | \$575 |
| 64 | * | Liechtenstein 1961-2001 MUH virtually complete colln in 2 "Safe" hingeless albums, incl m/ss & sheetlets. Good CV. | \$600 |
| 65 | * | Luxembourg 1945-75 MUH colln in "Safe" album. Virtually complete incl 1956 & 1957 Europa sets (SG 609-11, cat £700; SG 626-8, cat £290), incl m/ss. High cv. | \$1,500 |
| 66 | CU | Malta 1842-c1960s Postal History colln of covers & pmks on stamps, mostly on annotated pages. Noted 5 pre stamp entires incl disinfected mail (with slits) from Alexandria to Malta. Wide range of post offices & other postal markings. About 175 covers & 50 stamps. Ex Jack Thornton. | \$975 |
| 67 | / | Malta 1885-1980s mint & used colln on pages - reasonable range with some useful items. About 600 stamps. Good cv. | \$350 |
| 68 | / | Monaco c1890s-2009 collns in "Safe" & L/H hingeless albums & s/b. Good coverage esp from 1920s, mostly mint (MUH from c1930s). Noted: 1933 Pictorials mostly complete incl 1f, 1f75 claret, 10f & 20f; 1939 Relief set MUH etc etc. Probably a couple thousand stamps. High cv. Weighs 7.5kg. | \$2,000 |
| 69 | / | Nepal c1890-1907 seln of 14 singles, pair, tete beche pair & block of 4 on Hagner. Some variable cond & identified as per Scott (18 items). Scott 10-28 range. Cat US\$700+. MNG/used. | \$500 |
| 70 | / | Netherlands 1864-1999 extensive colln in 3 Davo hingeless albums comprising 2200v approx, 82 m/s & 17 booklets. Noted 1867 to 15c u; 1872 range to 50c u; 1920 2.50 on 10g (SG 236) mint (odd tone spot); 1940 surcharges range to 500 on 3c used; 1952 ITEP set mint; & various setenant combinations m&u. Many MUH from c1970. Vol I (to 1980) cat £3200+; Vol II (1981-99) £1780+; Vol III (back of book issues) £385+. Generally very good to fine cond. Cat £5360+. Mint/MUH/used. | \$2,000 |
| 71 | / | NZ 1855-1910 old time mint & used colln on 3 Maury album pages. Noted: 21 Chalons used; 1882 set to 1/- mint; 1898 to 5/- mint; 1900 Postage Dues to 2/- mint; 1906 Christchurch Exbn set mint; EVII to 1/- mint. | \$2,000 |
| 72 | / | NZ c1855-1930s accum in s/b, mostly used. Noted 7 imperf & 21 perf FFQs (nearly all poor cond); selns SSFs, 1898 Picts, EVII, GV, Victory (incl 6d & 1/- each x 2 mint; Dunedin Exbn (incl mint set); 2/- & 3/- Admirals mint; 1931 Airs; 1938 1½d GVI choc plate block of 4 (No 20) mint etc etc. Well over 1000 stamps. | \$875 |
| 73 | / | NZ 1855-1954 colln/seln on Hagners, nearly all used, to 1909, Mint/MUH from 1915. Noted: FFQs imperf x 18 (incl nice SG 5), perf x 16 (incl 1/- spectacular pre printing crease, nice 4d rose & yellow; FSF set (2/- & 5/- very good); 1898 Pictorials good range to 2/-; GV Recess set (MUH); GVI set (MUH) etc. Good cv. | \$2,500 |
| 74 | / | NZ 1855-1973 comprehensive mint & used colln in 32 page/64 leaf Davo s/b. Noted: FFQ imperf (1d red, 6d x 2 & 1/- with margins) & perf (4d rose FU) sets GU/FU; FSF set (2/- GU, 5/- GU/FU); 1898 Pictorials set (2/- mint & GU/FU, 5/- mint but faded & MNG); Christchurch, Auckland & Dunedin Exbn sets mint, Health (Red Boy FU, Blue Boy mint), 2d Stars error MUH & 50c Abel Tasman Park right headland omitted. No "back of book" & several stamps with minor faults. | \$2,000 |

REMEMBER WE TAKE ALL MAJOR CREDIT CARDS

| | | | |
|----|---|---|---------|
| 75 | / | NZ 1855-1976 an almost complete colln of NZ used to 1874 & mint/MUH from 1882 in hingeless Premier album. Noted: FFQ simplified imperf (excl 1d red & 6d yellow-brown) & perf sets in mixed condition (4d rose fine); SSF 1/- p10 x 11 with bulbous nose flaw mint; 1898 Pictorials set mint (1/- & 5/- mng); Christchurch (3d with tone spot) & Auckland (½d to 3d MUH) Exbn sets mint; Health 1929-34 mint (1929 tone spot, 1931 1d with stains top back) & 1957-76 m/s sets MUH. Good condition but occasional stamps toned. | \$2,500 |
| 76 | U | NZ 1855-1980 comprehensive used colln in mounts on Premier album pages. Noted: FFQ imperf simplified set of 6; FSF 4d to 1/- GU/FU; 1898 Pictorials sets (1/- & 2/- fiscals, 5/- CTO); Christchurch Exbn set all CTO; Auckland Exbn ½d & 1d FU; Dunedin Exbn set (4d CTO); GV Admirals 2/- & 3/- FU & 1931-34 Airmails set FU. Complete from 1930 except for 2d Stars error. | \$1,000 |
| 77 | U | NZ c1855-1980s used colln in 2 mixed cond L/H s/b. First album consists of 87 FFQs, noted in good cond SG 14 (4 margins FU); SG 132 vert pair; SG 119 (1 side trimmed) & SG 125. Second album noted 3 1930 FFCs; 2/- FSF GU (light back thin); 2/- Milford official; Christchurch Exbn to 3d; 8d GV official GU/FU; Dunedin Exbn set; Blue Boy; 1931-4 Airs etc. | \$1,500 |
| 78 | / | NZ 1855-1992 colln of 1250 mostly used & 37 (incl 26 health) m/s mostly MUH on 92 album pages. Noted: FFQ 6d black-brown imperf FU; SSF set (excl 8d) GU/FU; Christchurch Exbn 3d FU; EVII incl official sets GU/FU; 1929-34 Health incl Red & Blue Boys FU & 1931-4 Airmails set FU. | \$500 |
| 79 | / | NZ 1855-1995 comprehensive near complete used colln in Tasman looseleaf album. Noted FFQ imperf x 8 (incl SG 9, 17, 33, 40, 41, 43 & 53, most with 1 or 2 margins except SG 9 4 margins) & perf x 15 (incl 2d vermilion NZ wmk retouched SG 141a, 4d rose FU & 6d black-brown p13 SG 75); FSF set (2/- GU/FU, 5/- fiscal); Auckland Exbn short set to 3d; 1931 Health (1d CTO, 2d FU); Life Ins (VR short set to 6d, no VR set of 11); Arms (incl 1/3d lemon, 7/6d & 12/6d); Officials (incl 1907 2/- Milford, GV 8d & 2/- Admiral); King Edward VII Land. | \$2,500 |
| 80 | U | NZ 1855-1995 simplified used colln on Seven Seas hingeless pages. Very few gaps (no 2d Stars) but condition mixed, especially earlier, with a few fiscal cancels etc. Noted in good condition FU: FFQ 1d orange 2 margins (SG 8), 4d rose (1 short perf); 1/- p13; 2/- & 5/- FSF (both GU); 1d, 3d, 6d Christchurch Exbn; 2/-, 5/- Pict Officials; Auckland Exbn set; 8d GV Official (GU/FU); 2/- Admiral Official; 1931-4 Airs; 1929-34 Health; 12/6d Arms; 5/- Arms vert Official; 35/- ovpt Arms; Health m/s 1957, no 1958 then all with modern Epuni pmks; 5/- Official QVLT; 1891 & 1905 Life Insurance sets; Fernleaves; 1d EVII Land & 1d Victoria Land. Some toning on pages but stamps virtually unaffected. | \$3,500 |
| 81 | / | NZ 1855-2000 comprehensive near complete colln mixed mint & used in Tasman deluxe album (3 folders) - mostly used to 1935, mainly mint from 1970 with m/s MUH. Noted: FFQ imperf x 7 (all except 1/- with 3 or 4 margins & 6d black-brown with small tear) & perf x 13 (4d rose with blunt corner); Christchurch Exbn short set to 3d mint; Dunedin Exbn set mint; 1929-34 Health GU/FU incl 1931 pair FU; 1957-95 Health m/s sets MUH (toning affects some sheets up to 1963); Officials GU/FU (incl EVII, GV incl 8d Admiral, 1935 Pict, GVI & 1940 Cent sets); 1d Victoria Land mint. Weighs 4.2kg. | \$1,500 |
| 82 | / | NZ 1855-2004 mint & used colln in 6 Warwick/Wiljef multi-ring albums. Incl used: FFQs simplified imperf & perf sets (presentable but 4d rose large closed tear); SSF set (2) & 5/- fiscals; 1898 Picts 2½d Waki (CTO); 5/- cleaned fiscal CTO; 1907 officials (5/- CTO); Christchurch Exbn set (CTO); Auckland Exbn set (CTO); GV recess set (some CTO); GV officials; Dunedin Exbn set; 2/- Admiral official; 1882 QVLT nice looking set but most CTO; QVLT officials (5/- CTO); Arms 1/3d lemon, 9/- & 25/- CTO, high vals all fiscal; 5/- Arms vert official CTO; 6d Triangular Pigeongram CTO; 1891, 1905 & 1913 Life Ins sets (1/- reperfed); 1899 Dues (4d-2/- all CTO); mostly complete 1935-90s; 1d EVII Land, 1d Victoria Land; mint c1900 Picts; 1907 reduced Picts (1/- tone spot); Victory set; Dunedin Exbn set; 2/- Admiral official; 1931-4 Airs; 3 early pigeon posts; mostly complete from 1935 (no 2d QEII Stars error). Note: no Health stamps in colln. | \$4,800 |
| 83 | / | NZ 1862-1967 pre decimal mint/MUH colln in hingeless album with slipcase (pages from 1855). Noted mint: perf FFQs x 5 (SG 110, 115, 117, 122 & 138 all no gum/regummed except SG 138 OG small tone spots); 6d FSF; 4d SSF; ½d Mt Cook & 1d Universal various printings; 1898 Picts range (incl 2/- & 5/- (minor faults); 1/- Kaka reduced; Christchurch Exbn set; 3d Auckland Exbn; EVII set & GV (recess & surface) sets with perf/paper vars (some MUH); Victory set; Dunedin Exbn set; 2/- Admirals (Jones & Cowan); 1929-34 Health (1932-4 MUH); 1931 3d, 5d, 7d Airs; 1935 Picts (incl perf, wmk vars, some MUH); then virtually complete defins & picts (some MUH incl 2d QEII Stars error); 6d Express Delivery Fernleaves WT p14 x 15 MUH; Officials: 6d Kiwi reduced (o/c), 2/- QVLT x 2; EVII to 8d MUH; Dues 1902 & 1939 series various; Arms to £1 (no 12/6d) + £2 (7/-, 7/6d, 10/-, 15/- & £1 MUH); Arms surcharge 5/6d MUH, 11/-; 1d Victoria Land MUH. Plus many other key items with minor toning or no gum. High cv. | \$5,500 |

| | | | |
|----|----|--|---------|
| 84 | / | NZ 1862-84 mint & used comprehensive colln in L/H & Davo s/bs. Noted: FFQ perf simplified set FU (no 4d rose), SSF short set to 6d mint, 1907 redrawn 1d & 3d MUH, EVII set mint/MUH, GV set MUH (except 4½d, 9d mint), 1935 Picts 9d official green & black ovpts MUH, 1931 Red Boy FU. High cv but several stamps affected by toning. | \$2,000 |
| 85 | / | NZ 1862-86 two mainly used collns in CP NZ albums. Noted FFQ perf x 4 diff, SSF 6d mint, 1898 Picts 2/- & 5/- MNG, Christchurch Exbn 3d MNG, Victory 1/- GU, 2/- Admiral official FU, 1931-4 Airmail set of 5 FU, 1882 1d blue small fiscal x 2 mint, QVLT (3/- m, 7/6d FU, 10/- & £1 GU/FU, 2/- Official FU) & Arms 15/- GU/FU. Jury cat \$8000+. | \$1,000 |
| 86 | / | NZ c1862-1935 range of simplified FU sets on hingeless pages. Incl FFQ 1d-1/- perf set of 11 (4d rose with slightly short corner); SSF set of 10 (& some extras); 1898 Pictorials London print short set to 2/- (13) plus later printings set of 15 to 5/- (5/- CTO); 1920 Victory & 1925 Dunedin Exbn sets; 1931-5 Air sets. Also GVI ½d-3/- set of 21 MUH; 1940 Centennial set MUH/mint (& 2 cinderella labels), & QEII official set of 11 MUH. Attractive clean lot. Cat \$4500+. | \$1,500 |
| 87 | / | NZ c1862-c1950 range of simplified FU sets on hingeless pages. Incl FFQ perf set of 11 (4d rose VFU), FSF short set to 1/- (7), SSF set (10), 1898-1908 Pict set of 14 (x 2 sets, but 1 x 5/- fiscal cancel, not counted in cv); GVI official set (14), Life Ins 1898 ½d-1/- VR set 6) & 1905-40s no VR set (11). Also 1920s-30s page of mint incl 1925 Dunedin Exbn set, Admirals 2/-, 3/- Jones paper, GV 2/- official; 1929-30 Health; 1931 Air set (3) & 1938-47 GVI set (17) MUH. Attractive clean lot. Cat \$5750. | \$1,750 |
| 88 | / | NZ 1862-1971 mix mint & or used colln in Warwick multi-ring album, noted mint: Christchurch & Auckland Exbn sets; EVII set; Dunedin Exbn set; 1/- Victory; 1935 Picts single wmk set (no 9ds) etc. Used: 1929-34 Health (Blue Boy minor toning). Plus many other better items affected by toning. | \$1,250 |
| 89 | / | NZ c1862-2003 mint/used colln in 4 albums - sparse pre 1915. Noted used: Dunedin Exbn set CTO; 1954 QEII incl officials sets & mint: 1960 Picts set; good coverage from 1935 (MUH from mid 1970s). | \$500 |
| 90 | / | NZ etc c1867-c1970s seln of 19 auction lots (c2005-2011 period) ex J R Mowbray/SG Australia auctions. Noted: £4234 Arms gold & blue, punched on piece; 35/- ovpt Arms FU; 4/4d QVLT, imperf fine fiscal cancel; 1d Life Ins blue no VR mint; 6d Railway Parcel stamps (fine cond); 6 postmark lots [Wharepuhanga, Hangarua, Silverhope, Tokatea, Haywards Point (on p/c) & Upokopoito (last day telegraph office per favour)]. Also noted 1d Black pl 6. Total Hammer price about \$3500. | \$2,000 |
| 91 | / | NZ 1873-c1980 mainly used colln on pages, noted: FSF set (2/- FU small tear, 5/- GU); Auckland Exbn set (1d GU, 3d & 6d CTO); 1931-4 Airs; 1/3d lemon, 8/-, 9/-, 12/6d, 15/-, £2, £3 Arms); 2d QEII Stars error; 1929-34 Health etc etc. | \$1,750 |
| 92 | M* | NZ 1873-1985 mostly MUH colln in 2 Davo hingeless albums with slipcases. Pages complete from 1855 (no EVII Land/Victoria Land). Noted: 1878 1d FSF large star wmk (no gum, maybe cleaned pen cancel); SSF set (mostly HH mint); 1898 Picts most mint/some part gum etc; 3d Kaka reduced mint; 1d Universal redrawn, 1d Dominion DLR unsurfaced paper; 1915 GV recess & surface sets (4½d darkened gum); Victory set; Silver Jubilee set; 1935 Picts x 2 appear to be single & mult wmk sets; 1940 Centennial sets incl officials; Health from 1935 (m/s from 1957); virtually complete defins & commems from 1936 (incl 2d QEII Stars error); Express (Fernleaves & Car); 1d lilac & 1d blue QV small types (both OG mint but minor toning); 1913 Life Ins (no 1d blue & 2d chestnut); Officials: EVII (1/- a bit grubby); 1935 Picts; GV & QEII etc etc. High cv. | \$6,500 |
| 93 | / | NZ 1874-1958 mint & used seln on pages. Noted: FSF used set (1/- x 2, 2/- FU pinhole & 5/- no obvious cancel minor tone); 1899 Dues set lower values a few faults but 8d, 10d, 1/- & 2/- (mint) good; 1867 £7 QVLT die I, nice fiscal cancel (not punched); 1882 £300, £400, £500 QVLTs punched; 5/- QVLT official mint; Arms: £1000 punched & unpunched, 35/- ovpt (not punched); £400 not punched, 12/6d mint 1 toned perf & 5/- vert ovpt mint; 2d QEII Stars ovpt error mint; etc. | \$1,500 |
| 94 | / | NZ c1880s-1970s Life Ins, Officials, Dues, other back of book, Ross Deps mostly used collns on pages. Noted 1891 Life Ins set (mixed cond); 1d blue, 2d chestnut no VR; Officials 1907 Picts set, 1907 Kiwi reduced (mint), 2/- & 5/- QVLTs, 5/- vert ovpt Arms (minor tone), 8d GV (GU); Dues 8d (mint) & 2/-; 1d EVII Land; plus other high cv items with minor faults. | \$2,000 |
| 95 | / | NZ 1882-1966 mint & used colln on pages. Noted: 1891 Life Ins set GU/FU (6d rounded corner, 1/- minor tone); 6d Christchurch Exbn CTO FU; Auckland Exbn set mint; Dunedin Exbn set CTO FU; 1929-34 Healths FU (Red & Blue Boy minor tone); Red & Blue Boys mint; 1931-4 Airs horiz pairs mint (3d MUH); virtually complete from 1935 mint &/or used (no 2d QEII Stars error). | \$1,750 |
| 96 | U | NZ 1892-1994 FU seln most as blocks of 4, noted: 1954 2/6d-10/- QEII defins; 4d Dunedin Exbn, 8d Centennial; 8d GV official (single); 2/- Milford x 2 singles; 1974 \$20 Mt Cook complete sheet of 25. Total 140+ stamps. Good cv. | \$650 |
| 97 | / | NZ 1898-1985 mint colln in 2 Davo hingeless albums with slipcases. Noted: 1898 Pictorials 2½d Wakitipu, 4d & 9d (toned) MUH; Christchurch Exbn ½d & 1d mint; Auckland Exbn 1d MUH, Health 1929, 1930 & 1931 Red Boy MUH (toned), 1935 Pictorial Official 9d black & red.; 1953-4 QEII the 4 high values MUH; 1958 2d QEII 2d Stars error MUH & series of Health MUH m/s sets from 1960 to 1985 (excl 1962 & 1966 sets & 1971 (x 2) & 1972 4c mint). | \$1,000 |

| | | | |
|-----|----|---|---------|
| 98 | / | NZ 1898-1940 mint & used accum, noted: 1898 6d green x 7 used, 5/- x 8 (7 fiscal & 1 FU); Dunedin Exbn x 2 sets GU/FU; Admirals x 2 sets also 2/- x 10 & 3/- x 4 FU; 1/3d lemon Arms u; 1940 Centennial set u. Ex old time dealer. Cat \$5850+. | \$1,000 |
| 99 | M* | NZ 1898-1990 mint/MUH seln mostly in blocks of 4s on Hagners. Noted mint: 2½d Wakitipu block of 8 (patchy gum), 8d Canoe, 2/- Milford (single); 2/- Cook plate block (No 2); 3/- Mt Egmont PB (MUH); 1/-, 2/- x 2 & 3/- GVI PBs; 2/6d to 10/- QEII, 5/- & 10/- PBs (10/- is MUH); 5/-, 10/-, 1960 £1 Picts PBs of 6 except £1 blk of 8 MUH; \$2 pink Geyser PB of 10 (MUH); Christchurch Exbn set (singles); Auckland Exbn (singles, no gum); 1935 Silver Jubilee set (6d MUH); 1940 1½d-9d Picts officials (MUH); Health 1930 (MUH), 1929 (blk of 6 MUH) & 1934 x 2; Life Ins 6d pink (MUH) etc etc. Total about 475 stamps. High cv. | \$3,000 |
| 100 | M* | NZ 1898-2000 comprehensive near complete mint colln in Premier illustrated album (3 folders). Noted: 1898 Picts (2/- thinned, 5/- MNG); EVII; GV (some MNG); Victory; Dunedin Exbn & 1931-4 Air sets; Officials incl 1935 Picts (no 9d green ovpt) GVI & 1940 Centennial sets; QEII sets & 2d Stars error; 1971 50c Abel Tasman missing RH headland block of 4; 1986 Stockholmia m/s x 2 MUH; 1990 Orchids imperf m/s MUH; 1929-34 Health (1931 Red Boy with tone spots on back), 1957-2000 Health m/s sets MUH; QVLT 2/- official, 2/6d & 3/-; Postage Dues (1899 short set to 6d & 1902 set); Express Delivery Fernleaves; 1d Victoria Land. Several stamp adhesions but most key stamps free with all m/s and wide range of cinderellas MUH. Weighs 5.2kg. | \$2,000 |
| 101 | P | NZ 1900-15 range of 25 proofs/reprints album page. | \$250 |
| 102 | / | NZ c1900s-70s seln on Hagners mostly MUH. Noted: Dues; 1d Universals; GV incl 17 2 perf pairs (some in blocks); 2d surface official grossly misperfed block of 8; 1935 Picts incl 2d Whare p14 PB 2B mint; GVI; QEII, 1960 & 67 Picts; 1d EVII Land FU & Victoria Land ½d minor gum tone mint & 1d MUH. | \$2,000 |
| 103 | / | NZ 1906-39 mint & used colln on 9 pages. Noted 1906 Christchurch Exbn set mint; 1926 2/-, 3/- Admirals mint; 1931 6/- to 9/-, 12/6d-25/-, £2.10, £3 x 2 mint & FU, £3.10, £4 x 2, £5, 22/- ovpt Arms mint. | \$2,000 |
| 104 | * | NZ 1929-87 MUH colln on pages. Incl Health complete incl m/ss (except no 1958 & 1959), Red Boy 1 toned perf, extra 1933 & 1934; 1958 2d QEII Stars ovpt error horiz pair with RH selv; Xmas 1960-79; 1967 decimal Arms; 1939 Dues; 1969-81 Life Ins; 1957-82 Ross Deps. | \$1,250 |
| 105 | C | NZ 1947-53 unique colln of 11 diff hand-painted pictorial FDCs, incl 5 for defins (1947 GVI set, 1950 1½d Arms, 1953 QEII low values, ditto "Official") & 6 for commems (1948 Otago, 1950 Canterbury x 4 diff, 1953 Royal Visit). Themes incl native plants, Kiwi, Maori carvings, Canterbury scenes. Names /addresses incl H Duke, N Benn, M Purdon (5), F Baird (2), A Harbott. Most appear unlisted by Jones (2004). With pencilled prices paid (up to \$210 each) on back of some. Very good to fine cond. Ex Horrell. | \$1,500 |
| 106 | * | NZ 1967-2020 MUH colln in 5 L/H hingeless albums, no obvious gaps, incl m/ss, Life Ins & Ross Deps. Also 2021 issues plus other items incl booklets etc in folders. FV about \$4000. Weighs 20kg. | \$2,800 |
| 107 | / | NZ 1967-70 Pictorials specialised mint/MUH/used collns on annotated pages, 1967 only to 30c. Good range shades, plate blocks, minor flaws, coil pairs (noted 2½c Flower Te Aro provisional), paper types etc. Maybe 1500 stamps. | \$250 |
| 108 | / | NZ 1967-93 substantially complete mostly MUH colln in 2 L/H hingeless albums with slipcases. | \$300 |
| 109 | * | NZ 1970-78 Extensive colln, in mounts, on pages or on Hagners, of flaws & varieties from 1970-71 pictorials and later commems/health mostly listed by CP & previously obtained from the then CP varieties service. Noted 4c Moth with each of blue, brown & light green omitted, 10c Royal with silver coat of arms omitted, major black colour shifts on 1c Butterfly (block of 4) & 18c Maori Club, 1971 4c on 2½c Moth (double impression of surcharge with one albino block of 4, misplaced ovpt single, red almost totally omitted as part of horiz strip of 5), 1975 Roses (2c with offset in 4 colours on back, 8c imperf pair) & colour offsets (1975 4c + 1c Health with red, & 1978 30c Toheroa with violet, colour offsets on back). CP cat \$9700+. | \$1,750 |
| 110 | * | NZ 2004-19 CALs virtually complete MUH colln in s/b incl BMW (FU) & ANZ & all better early stamp Exbn items etc but no Arts Festival. Also 17 booklets & 3 x 2012 FDCs. CP cat approx \$3000. | \$1,000 |
| 111 | / | Niue 1902-92 comprehensive near complete mainly mint colln on pages. Noted: 1902 3d to 1/- mint, 1942 Arms £1 MUH, 1945 Arms 10/- MUH & FU, 1986 Christmas & Visit of Pope John Paul II ovpt sets & the 4 diff m/s mint, OHMS 1985-7 set of 19 mint. SG cat £1800+. | \$750 |
| 112 | / | Omnibus: 1) 1937 Coronation complete set of 202 in small annotated album mint (incl 1938 Australia Robe set, 1939 Canada Royal Visit set, 1947 Southern Africa Royal Visit sets, 1948 GB Royal Silver Wedding set & additional 1938-52 royal issues from Canada, Newfoundland & NZ). 2) 1949 UPU complete sets (minus Bahrain, Brit Postal Agencies in Eastern Arabia, India, Pakistan/Bahawalpur, South Rhodesia & Tangier sets) in small album mint & 3) 1953 Coronation complete set of 106 (minus Canadian issue) in small annotated album mint. Stamps in (1) in (2) in good condition, most stamps in (3) affected by hinge toning. SG cat £735+. | \$300 |

| | | | |
|-----|----|--|---------|
| 113 | / | Pacific Isl c1930s-2010s collns on Hagners & bundle s/b pages, incl: Pitcairn, Papua, New Guinea, PNG, Cook Isl etc, Solomon Isl, Norfolk, Cocos (Keeling), Christmas Isl, Niue, Kiribati etc. Some useful sets. Several thousands. Nearly all MUH. Weighs 5.5kg. | \$600 |
| 114 | M* | Papua, New Guinea, PNG etc 1901-96 accum. 1901-5 wmk upright vals to 1/- mint & 6d used, 1906 2d mint, 1907-10 1/- mint, 1911-15 vals to 1/- mint, 1931 set to 1/- mint, 1908-10 Official vals to 2/6d used, West New Guinea set MUH, good later range. Cat £1200 (+ 1952 £1 & 1963 £1 ovptd SPECIMEN unused). | \$600 |
| 115 | / | Penrhyn 1902-95 comprehensive near complete mainly mint & CTO colln on pages. Noted: 1914 EVII ½d to 1/- mint, 1983 Manned Flight Centenary "Islans" error & corrected sets (CTO sets, m/s mint x 2, 10 m/s with 5 of each value mint), 1986 Christmas & Visit of Pope John Paul II ovpt sets mint & CTO with the 2 m/s mint, OHMS 1985-7 sets of 25 mint & CTO. Also incl near complete Tokelau 1948-90 mint colln. SG cat £1400. | \$500 |
| 116 | / | Poland 1860-1934 seln of 500+ mint/used on 26 illustrated album pages. Noted: 1860 10k used, 1918 bars surcharge set of 11 mint, 1919 Austrian stamps with "Poczta Polska" ovpts 3h, 5h, 6h, 10h, 20h & 30h mint (all affected by toning), 1919 German stamp with "5" & "10" surcharge mint & 1930 1z President Moscicki with horiz laid paper mint. Minor dupn. | \$1,000 |
| 117 | / | Poland 1860-1981 extensive near complete colln of mint/used in 231 page illustrated Minkus album. Noted 1860 10k used, 1922-3 set of 20 used, 1944 National Horses set CTO, 1945 Liberation set of 10 CTO & 1946 Education Fund set MUH. Also incl 170 m/s (but 1928 Philatelic Exbn used, 1937 King visit m/s x 3 used, 1938 Philatelic Exbn perf & imperf both used, 1938 stratosphere flight used, 1946 Education Fund MUH, 1948 Polish culture used, 1948 Fighters for Freedom used & 90 m/s from 1977-94 in separate s/b & seln of East Silesia, Port Gdansk & A39-44 General Govt issues. Weights 4.1kg. | \$2,000 |
| 118 | / | Portugal c1850s-82 colln in Davo standard, L/H hingeless & Hagner albums. Good range mix mint & used to c1960s, latter nearly all MUH. Some dupn, some better c1950s sets but no key m/ss. Incl some Surinam m/ss with MUH dupn. Good cv. Weights 5.5kg. | \$750 |
| 119 | / | Rhodesia 1892-1922 mainly used colln of 123 on interleaved pages. Noted 1892-4 to 10/- (16), 1896-7 to 10/-, 1898-1908 to £2, 1909-12 to £2, 1910-13 Royal Couple to 1/- (shades), 1913-22 to 10/- (but 2/6d, 5/- fiscal cancels). Toning noted throughout. STC £2750. (SG 2017). | \$750 |
| 120 | / | Romania 1858-1980 extensive near complete colln of mint/used in 317 page illustrated Minkus album. Noted 1858 80g mint, 1864 30p FU, 1866-7 2p m&u, 1903 PO horiz set of 8 mint & vert set of 7 FU, 1906 Jubilee Exbn set incl 1L50 to 3L mint, 1945 Union Congress set MUH & 1956 imperf wildlife set FU. Also incl 134 mostly MUH m/s (incl 1932 Philatelic Exbn, 1946 Orchestra 350 + 1650L, 1958-9 Stamp Cent 10L blue & red & 10L blue with "10 year" ovpt, & 1959 500th Anniv of Bucharest mint) & seln of Occupation stamps. Weighs 3.6kg. | \$1,000 |
| 121 | / | Romania 1862-1958 colln of mint & used in 187 page illustrated Editura Stiintifica album. Noted 1864 6p horiz pair mint, 1932 Philatelic Exbn m/s mint, 1945 Patriotic Defence Fund & Trade Union Congress sets mint (some toned), 1948 National Sports Organisation set mint, 1956 Wildlife sets perf & imperf FU, 1958 Brussels Internat Exbn horiz strips x 2 diff CTO & 3 diff singles with ovpt invtd, & 1958 IOL red Stamp Anniv m/s. Weighs 2.9kg. | \$750 |
| 122 | / | Romania 1868-1933 seln of 400+ mint & used on 26 illustrated album pages. Noted 1872 3b mint, 1918 King Carol I 5p & 10p with invtd "1918" ovpts FU, 1931 Romanian Army, Monarchy Anniv, Scouts, Navy Anniv & Air sets all mint, 1932 Scouts, Medical Congress, Postal Employees Fund & stamp Anniv sets all mint, & 1932 Philatelic Exbn m/s mint. Minor dupn. | \$250 |
| 123 | / | South Africa & Provinces, SWA 1850s-1980s colln on pages & in packets etc. Incl CGH 23 triangulars & approx 50 others; Natal x 30+; orange RC (etc) x 28; Transvaal x about 90; South Africa x about 600 (incl about 50 bilingual pairs); SWA x about 140 (incl 18 bilingual pairs); Mafeking 3d Baden Powell FU (light crease). | \$1,500 |
| 124 | / | South Africa 1910-88 comprehensive mostly used colln on pages, appears virtually complete on semi-specialised basis (ignoring bilingual pairs, though some are included). Noted 1925 Air set of 4 & 9 significant 1927-32 defin items: horiz bilingual pairs of 4d SG 35c FU, 2/6d SG 49 GU/FU, 5/- SG 38a H/H mint, 10/- SG 39 H/H mint, 10/- SG 39b FU (short corner) & vert bilingual pairs of 1/- SG 36 GU, 36a FU, 2/6d SG 37 FU, 5/- + SG 38a GU/FU. These 10 items alone cat £1400+. Total STC £3450. (SG 2012). | \$1,000 |
| 125 | / | South Africa 1910-1995 colln of Union of South Africa (to 1961) mint & used in Davo hingeless album in slipcase, & Republic of South Africa (from 1961) used, near complete, on pages. Noted: 1932 4d Kraal spear flaw (SG 46b); 1937 6d Orange Tree molehill flaw (SG 61b). Also small colln (90 diff) South West Africa stamps 1927-82 in small stockbook. SG cat £3000+. | \$750 |
| 126 | / | Sports 1920-57 mint & used seln. Noted: Italy (cat alone £500) - incl 1934 World Cup set & 1951 Gymnastics set mint; Liechtenstein 1954 etc sports sets mint; Hungary 1925 sports/scouts set mint etc 520v on 102 pages, generally fine cond, with odd duplicate. SG cat £2750+. | \$1,000 |

| | | | |
|-----|----|--|---------|
| 127 | / | Switzerland 1850s-1980s mostly used colln on pages & in packets etc. Good range all eras starting with 7 x Canton issues; 30+ imperf Helvetias, also noted 1945 80c, 5f & 10f PAX FU, minor tone spots; good 1920s-30s Airs; Pro Juventute appears complete nearly all used & International Organisation issues. About 2000 stamps. | \$3,000 |
| 128 | / | USA c1850-1915 dupn, specialisation & mixed condition, on pages & misc covers, postal stationery & misc items. Noted Columbian & Omaha Exbns, range to 50c used. Cat £7100 approx. Mint/MUH/used. | \$1,150 |
| 129 | / | USA c1860s-1991 colln in 4 Davo standard albums (pages complete from 1847), all stamps in mounts, mix mint & used. Earlies rather sparse but incl a few useful items. Also noted c early 20th coil/perf varieties mostly complete from 1930s. Good cv. Weighs 5.5kg. | \$750 |
| 130 | C | USA 1900s-50s Postal History 100+ covers (incl a few fronts), many Maritime covers with Navy pmk, some Air covers. Mixed cond. Noted 2 from USS Edsall. | \$230 |
| 131 | * | USA 1994-2009 MUH colln in 2 L/H hingeless albums with slipcases, mostly complete incl many sheetlets & m/s. Good FV alone. MUH. | \$500 |
| 132 | / | Vatican 1929-1980s 3 album colln. Nearly complete from 1929 set FU onward, 1933 set of 18 FU, 1935 & 1936 commem FU etc. Also good coverage mint incl 1949-51 (SG 151-72, cat £243). 1953-80 appears complete MUH (excl m/s & Airs etc). | \$725 |
| 133 | R | World 1870s-1930s seln of 750+ revenue stamps in 16 pg/8 leaf Davo s/b. Incl: Austria x 165, Germany x 147, France x 50, GB x 50, USA x 40 & sheets of 64 Uruguay & 50 Chinese stamps. Some dupn. also incl seln of 200 El Salvador postal stamps from 1890-1924 mostly mint on pages. | \$400 |
| 134 | | WWI & WWII 1914-60 misc group incl various WWI memorabilia, noted ration book, transport passes & tickets, 1919 South Australia cover with "Buy a Brick" cinderella unlisted by Elsmore; WWII NZEF Christmas cards; "Paris Libere" cover issued by Free French Forces with 2 FFF stamps canc 26.VIII.1944; NZ Narrows Air Force Base cancel on cover; Wilkinson Sword Ltd price list of swords, breeches (from £4 2/6d) etc. | \$575 |
| 135 | / | Yugoslavia c1945-69 mainly mint/MUH colln in s/b. Noted: 1949 Railways m/ss - perf MUH, imperf mint; 1951 10d Air m/s imperf MUH; 1954 Animals & 1956 Art sets MUH; 1956 Olympics set mint; 1961 Insurrection m/s MUH; plus many other key sets. | \$650 |
| 136 | / | Zanzibar 1895-1966 150v on 27 pages. Noted "Zanzibar" ovpt varieties & 10R SG 260 used (£425). Cat £1370+. Mint/MUH/used. | \$600 |
| 137 | M* | Zeppelins/Airs etc c1930s MUH seln on Hagners. Noted: USA 1933 50c Zeppelin mint; Italy 1933 Zeppelin set MUH; Tripolitania 1931 Airs & 1933 Zeppelin sets; Cyrenacia 1934 Exbn set (mint) etc etc. Good cv. | \$400 |

COLLECTABLES

| | | | |
|-----|--|--|---------|
| 138 | | Cigarette cards: 1900-30s colln in plastic sleeves or bags per set "WD & HO Wills". Comprises 65 diff catalogued complete sets with 15 duplicate sets & 2100+ cards in part sets. Noted 1912 Musical Celebrities (cat £125) x 2, 1923 Motor Cars (cat £110) x 2, 1926 Motor Cycles (cat £160) x 3 & 1926 V.C's (cat £125). Murray cat £5600. | \$1,000 |
| 139 | | Cigarette cards: 1900s-30s John Player & Sons colln in plastic sleeves or bags per set. Comprises 60 diff catalogued complete sets with 4 duplicate sets & 600+ cards in part sets. Noted 1923 "Bonzo" Dogs (cat £150), 1924 Boy Scouts (cat £200), 1924 British Live Stock (cat £187), 1925 Leaders of Men (cat £120), 1926 Arms & Armour (grey back) (cat £150), 1926 Aeroplane series (cat £124), 1928 Lawn Tennis (cat £250 but 4 cards damaged) & 1930 A Nature Calendar (cat £130). Murray cat £4,000. | \$800 |
| 140 | | Cigarette cards: 1910s-30s colln from manufacturers "H" to "Z" (excl Players & Wills) in plastic sleeves & bags per set. Comprises 44 diff catalogued sets with 2 duplicate sets & 2,600+ cards in part sets. Noted F & J Smith 1923 Nations of the World (cat £350), Societe Jobs, 1924 & 1927 Orders of Chivalry 1st & 2nd series (cat £200), James Illingworth 1926 Old Hostels (cat £150), 1931 R & J Hill Famous Cinema Celebs (Spinnet) (cat £200) & 1938 Godfrey Phillips Aircraft (cat £110). Incl 70 silk cards. Murray cat £6100+. | \$1,200 |
| 141 | | Cigarette cards: 1910s-1930 colln from manufacturers "A" to "G" in plastic sleeves or bags per set. Comprises 60 diff catalogued sets with 5 duplicate sets & 1,900 cards in part sets. Noted Gallaher Ltd 1923 Interesting Views (coloured) (cat £240) & 1926 Cinema Stars (cat £160), Dominion Tobacco Co. 1927 Coaches & Coaching Days (cat £150) & 1928 USS Co. Steamers (cat £175) & Ardath 1930 Beautiful English Women (cat £240. Murray cat £5600+. | \$1,000 |
| 142 | | Cigarette cards accum of issues c1905-39, mostly in good/VG to fine cond, largely sorted into sets in small packets. Total approx 1875 cards (a little dupn). Themes noted incl flags & arms, military, film stars, transport, sport (cricketers etc), political, flora & fauna, industry. Many sets especially issues of John Player, Godfrey Phillips, Ardath, Wills, & Ogden's 1928 Famous Railway Trains set. Murray c£1850. | \$750 |

- 143 Cigarette cards: 1916-67 seln of over 5500 sorted by set in 3 Collecta albums & 2 boxes. Mostly part sets but incl 30 complete sets (13 diff & 17 duplicate) incl John Player & Sons Cricketers 1934 & Cricketers 1938 sets. Also incl Murray Cards (Int) Ltd "Errors & Varieties - British Cigarette Cards" book (1987 reprint). \$750
- 144 Cigarette cards: 1923-66 seln in 6 Nostalgia albums. 61 complete sets (incl John Player & Sons Cricketers 1930, 1934 & 1938 sets, Godfrey Phillips 1939 Our Dogs set of 36, Hignett Bros & Co 1924 Prince of Wales Empire Tour set) & 68 part sets (incl 46 silk cards & 14 cards with errors & varieties). Murray Cat £1700+. \$1,250
- 145 File of documents relating to notable people, incl correspondence/photographs/greeting cards etc signed by them. Ex personal archive formed by Arthur Leigh Hunt (1876-1968), prominent NZ businessman, entrepreneur & Antarctic enthusiast. Noted: Lord Bledisloe, Governor of NZ (8 items, incl 4 signed); Sir Bernard Fergusson (Governor-General, 2 signed); NZ Prime Ministers W F Massey (2 signed letters 1918, 1921), K Holyoake (signed, 1967), W Nash (signed, 1967); Amery family (GB); sailor Alan Villiers (1957, signed); & 2 formal letters to Hunt family signed Lyndon B Johnson (1961, as Vice President, & 1968 as President of the USA). Also "Voyage South" booklet re 1956-57 sub-Antarctic voyage of NMNZS Endeavour, Pukaki & Hawea (& associated cyclostyled orders ex Navy Office); National Geographic Magazine Nov 1957 with 42-page article on Prince Philip's Antarctic voyage on Royal Yacht Britannia (plus "Chatham Island Jockey Club Royal Meeting 19/12/1956" programme); & Hunt's idiosyncratic 1957 autobiography (publ Reed). \$750
- 146 C Letter dated 16 April 1934 (on stationary of NZ Shipping Co.'s RMS Rangitane), written & signed by renowned writer George Bernard Shaw. To NZ businessman & entrepreneur A Leigh Hunt. Contents concern their mutual interest in "atmospheric nitrogen fixing" & hydroelectric power generally. In the 1920s-30s, Hunt was an early & vocal proponent of a hydroelectric power scheme between Lake Manapouri & Doubtful Sound. Shaw visited NZ 15/3-15/4/1934. A significant document, probably previously unrecorded. Some wear & ageing. \$750

THEMATICS

- 147 / Fish & other Marine Life thematic colln on pages arranged alphabetically by country. Wonderful seln. Noted FSAT (19 stamps cat approx £550); many sets (incl definitives) incl 1960 China Goldfish set FU, etc etc. Mostly mint. Well over 1500 stamps. Minor toning (mostly apparently on pages). High cv. \$750

LITERATURE

- 148 The Royal Philatelic Collection by Sir John Wilson (Bart) - Keeper of the Royal Collection - a sumptuous production, leatherbound with gold tooling. Publ (1952) by The Viscount Kemsley at Dropmore Press. An extensive listing, description & illustrations (12 in colour & 50th in B&W) of the Royal collection. Minor foxing on fly leaves & 1st & last few pages (with slipcase in dilapidated cond). Weight 7kg. \$750

NEW ZEALAND - POSTAL HISTORY

- 149 U PUBLIC SERVICES QUEEN CARNIVAL / Colosseum / 13th to 15th April 1916 / POST OFFICE, purple CH'CH oval rubber h/s on piece, scarce. \$250
- 150 U Washington Island very fine 5 MY 22 "J" class cancel on 6d GV & also 2/- QVLT, used during the first period of use (1/12/21 - 25/5/22) according to Startup & Proud. Very scarce. \$750
- 151 C 1852 pre stamp entire, letter dated 4 Sept 1852, Lyttelton, sent by James Edward Fitzgerald & readdressed to near Birmingham, inscribed "per Pauline to Sydney Sept 20 1852". Postal markings incl good "(crown) "PAID AT PORT VICTORIA" in red, "PORT VICTORIA SP 21 1852" unframed cds in red, "OXFORD MR 19 1853" (x 2) in green, "BIRMINGHAM MR 19 1853", "FB MB" (?) circular h/s. Transcription of letter enclosed. Fitzgerald was a prominent early settler who became superintendent of Canterbury at this time but the letter talks mainly of his early attempts at cattle farming. \$1,250
- 152 1859 8 letters, no outers. Correspondence from Whareama (Castle Point) & Matua (?) Mahunga, (Gisborne?) Subject of letters incl the transport of sheep fleeces & the non-arrival of parcels + letters. Three letters are purportedly sent from Boggley Wollah, the fictitious tiger ridden jungle of "Vanity Fair". The writer apparently saw himself stranded in a similar place to Thackeray's "lonely, marshy, jungly district" (all with transcriptions). Also a 9th 1855 letter from "Rangitiki" (Edward's Castle). \$250
- 153 C 1859 envelope with 6d imperf brown (1+ margins, SG 13), just tied by barred "5" cancel (Timaru), addressed to Christchurch, "Christ-church Dec 24 1859" unframed cds, b/s "Port Victoria Dec 14 1859". \$300
- 154 C 1864-9 3 FFQ internal covers: 1) 1858 front sent to Auckland with 2d pair (SG 113); 2) 3d mauve (SG 118) on entire sent Picton to Nelson; 3) 1d vermilion x 3 (SG 111) on envelope sent Christchurch to Hokitika. \$350

| | | | |
|-----|---|---|-------|
| 155 | C | 1906-7 Christchurch Exbn x 2 items: a) scarce pictorial cover (official) Maori Carving design, inscribed "To Araiteuru Pa" , PU to Wellington 24 SP 06, some faults; b) Pictorial lettercard (small deficit at base), PU to 1910. Also 1913-4 Auckland Exbn, fine reg'd cover franked 3d Exbn stamp (SG cat £500+ on cover), canc exbn cds 4 MR 14, green octagonal exbn d/s (scarce) on reg'n label. | \$600 |
| 156 | C | 1915-45 NZ Military camp PO covers x 36: range of 6 WWI (incl good 1915 Tauherenikau MC cds) & 30 WWII (some very scarce) incl Addington MC (b/s), Palmerston North MC, Featherston POW camp (4 OC 45) & many Air Force camps, incl Ardmore, Blenheim, Harewood, Guernsey-Delta, Hamilton, Levin, Mangaroa, New Plymouth, Onerahi (weak), Rongotai, Tauranga, The Narrows (2), Weedons. Condition varies. | \$575 |
| 157 | C | 1934 Royal Train cover - visit of HRH Duke of Gloucester. 1d Field Marshal tied by Royal Train 24 DE 34 cds, also Wellington 28 DEC 1934 machine cancel. Typed addressee LL Hills (GPO), readdressed in pen. Minor tone spots on top edge. | \$170 |
| 158 | C | 1946 stampless opened out cover "DAMAGED THROUGH IMMERSION / IN MANAWATU RIVER RAILWAY / ACCIDENT." purple cacheted, ex Wellington 19 Aug 1946 to Napier. Two fine strikes of cachet (1 each on front & rear) & opened at top. Also incl 2 diff B/W RPs of accident site + background details. | \$500 |

NEW ZEALAND - POSTAL STATIONERY

| | | | |
|-----|---|---|---------|
| 159 | C | c1880s-1970s colln/accum bundle of several 100s - noted Austin Walsh p/c x 2 unused; 1898 pictorial envelopes x 4 diff unused; 1920 1½d GV + ½d EVII lettercard unused; 1d + ½ ovpt "TWO PENCE" large Education Dept envelope used etc etc. High CV but some mixed cond. | \$450 |
| 160 | | 1907 6d carmine Telegraph form - a near complete form with purple oval GENERAL POST OFFICE / * NEW ZEALAND * h/s on rear - not noted by Samuel (1992) who noted "Only three complete telegraph forms so stamped are known to us. Two examples of the 6d Telegraph stamp used, & torn from telegraph forms have been reported". A very scarce item. Samuel HA1a. Cat \$2500. | \$1,000 |

NEW ZEALAND - DEFINITIVES

Full Face Queens Collections & Accumulations

| | | | |
|-----|---|---|---------|
| 161 | U | Range of 15 imperfs, 5 perf used on old time Maury page. Noted SG 2 FU, 16 x 2 FU, also 7 FSF & SSF incl 2/-, 5/- FU. Condition mostly fine. | \$2,000 |
| 162 | U | Richardson blue paper seln: 1d (no margins, faults); 2d x 11 mostly about 3 margins (minor faults on some, 2 have major faults); 1/- x 3 (all 2-3 margins, 1 with missing corner). SG 4-6. Cat £18,075. GU/FU. | \$2,500 |
| 163 | / | Used colln on pages - appears to incl SG 5 x 2, 6, 9-10 x 7, 13-14 x 4, 16, 17, 35, 40, 41 x 3, 43, 45, 48, 49, 51, 53, 54, 55, 80, 81, 82, 85, 86, 93, 94, 97 x 2, 98, 100, 105 x 2, 106, 107 x 2, 110 x 3, 111, 113-5 x 6, 115a, 118, 118a x 2 (singles), 119 x 2, 120 x 2, 122 x 2, 125 x 2 (incl 1 mint); 128, 130, 132a (unused), 133, 135, 136 x 2 plus 1d reprints horiz pair. Incl a few interesting pmks. Huge cv but very mixed cond. | \$7,500 |
| 164 | U | Colln on 4 pages in mounts, 16 imperf (incl pairs) & 25 perf (incl pair): most with faults incl SG 17 rebacked, some oxidation but noted in reasonable cond SG 44 (light back thin); SG 42 4 margins; SG 38 horiz pair (full margins except at right); SG 16 just 4 margins usual back thin; SG 120 x 2 distinct shades FU; SG 117 very light cancel; SG 119 GU nearly FU & SG 125 FU. Good cv. | \$1,500 |
| 165 | / | Davies imperf nearly all used seln on Hagners: 1d x 22 (incl 5 unused); 2d x 32 (incl 1 rouletted 7); 3d x 13 (incl 2 unused); 6d x 41 (incl 1 rouletted 7); 1/- x 25 (incl 1 rouletted). Wide range of shades & plate wear (2d), with a few nice pmks. Noted a 1/- blue-green shade (from the wreck of SS Colombo). Most with faults, nearly all minor but some repairs etc seen. SG 33-46 range. Cat well over £37,000. Mint & used. | \$7,500 |
| 166 | U | Accum of 59v GU/FU with odd m/s cancel. Noted SG 36, 37, 39, 69 x 6, 111 x 6, 112 x 12, 114, 117 x 5, 119 x 2, 120 x 3, 122 x 6, 125 x 2, 126 x 3, 128 x 2, 132 x 2, 133 x 3 & 134. Ex old time dealer. SG cat £5600+. | \$2,500 |
| 167 | U | Perf 13, Davies prints, star wmk, used seln: 1d red/orange x 15 (1 oxidised); 2d x 16, 3d x 3; 6d black-brown x 8 (1 rebacked); 6d red-brown x 4; 6d red-brown c 5; & 1/- x 15. Nice range of shades, many with faults, mostly minor. SG 68-80 range. Cat approx £20,000. | \$4,000 |
| 168 | U | NZ wmk, imperf seln: 1d x 12, 2d x 10 (1 with Odenweller cert 2013), 6d x 2 & 1/- x 10. Most about 3 margins & many minor faults. A few nice pmks. SG 97-100. Cat £14,000+. | \$3,000 |

| | | | |
|-------------------------|---|---|----------|
| 169 | / | NZ wmk used perf seln: 2d x 17 (5 x p13 - 1 with Odenweller cert 2013, incl horiz pair & 12 x p12½); 6d x 11 & 1/- (p13½) x 4. Some faults mostly minor but 1/- x 1 added margin & 2d x 1 cut 2 sides & blind perfs on another (OG mint). SG 105-6, 107-8. Cat £5700+. | \$1,500 |
| 170 | / | Perf 12½, Davies prints, star wmk used seln: 1d carmine/vermilion/orange x 45 (+ 5 unused) 1 with Odenweller cert (2014); 2d x 42 (+2 unused); 3d x 1 brown-lilac (trimmed perfs at base), 22 lilac (+ 3 unused) & 5 mauve; 4d rose x 12; 4d yellow x 18 (+ 3 unused); 6d red-brown/brown x 48; 1/- x 20 (+ 3 unused). Wide range of shades, plate wear (2ds), pmks etc. A lot with minor faults (but also other with major faults not incl in totals). A wonderful lot for research etc. SG 110-125 range. Cat £18,000+. Mint & used. | \$4,000 |
| 171 | / | New colours star wmk, nearly all used seln: 1d brown p10 (6); p10 x 12½ (12); irregular perfs (3 - 1 with Odenweller cert 2013), p12½ (13) (+2 unused); 2d vermilion/orange p10 x 12½ (6) + 4 retouched, p12½ (16) + 2 unused + 9 retouched (+1 unused); 6d blue p10 x 12½ (3), irregular perf (3), p12½ (22) + 4 unused. Nice range of shades, plate wear & a few nice pmks. Mixed cond with many mostly minor faults but also some reperfing seen. SG cat approx £13,000 (plus several other poor cond items not counted in numbers or cv). | \$2,800 |
| 172 | / | New colours range of 18 on album page. Noted 1d p10, 6d p12½ compound 10 at foot, 1d brown no wmk, 2d NZ wmk, condition varies. Mostly used, 2 mint. | \$1,000 |
| 173 | / | New colours, no wmk mostly used seln: 1d brown p12½ (4); 2d vermilion (11) + 4 unused + 2 retouches (1 with nice Switzers cds); 4d yellow (2 - 1 with fake cancel, other minor faults). Some shades in 2ds. Mixed cond with some minor faults. SG 137, 138, 138a. Cat £4400 (excl 1 x 4d & a poor cond 2d). Mint & used. | \$850 |
| 174 | / | Colln of 38 imperfs on 3 pages. Noted 1855 London prints 2d (3) & 1/-; 1858 1d (2), 2d (4); 1862 1d, 2d (6), 3d (4), 6d (5), 1/- (4) Pelure paper 6d (2), NZ wmk 1d (2), 2d, 1/-. All varied condition used, mainly 4 margins. SG cat £17,000 approx. | \$3,000 |
| 175 | U | Seln of 38 on 3 stockcards, 11 imperf Incl: SG 2 (indistinct barred "12" cancel), 9, 14 x 2, 37, 38, 41, 43, 46, 85 (3 margins), 85, 100 & 27 perfs incl SG 69, 72, 107 110 x 2, 111 x 2, 113, 114, 115 x 2, 117, 118, 119, 120, 122 x 2, 122a x 2, 125 x 2, 126, 130 132a. 133, 134 & 136. Cond mixed but many reasonable items incl 4d Rose, 6d pelure & 1/- NZ wmk. GU/FU. | \$1,500 |
| 176 | U | Range of 20 perf on part album leave. Jury cat \$2555. GU/FU. | \$500 |
| Full Face Queens | | | |
| 177 | P | 2d plate proof top selvage block of 4 in black on thickish paper. Holcombe cert (1988). CP APP2. Cat from \$800. | \$500 |
| 178 | U | 1855 1d dull carmine, London print, imperf 3 margins, very close at left, severely cut into base on 4th side, small corner crease top RH corner. Part "barred (1)0" cancel (Wellington). Good colour. RPSL cert (1971). SG 1. Cat £20,000. | \$4,000 |
| 179 | U | 1855 1d dull carmine, London print, 4 margins (just touches 2 corners), fine barred "11" cancel (Ahuriri). SG 1. Cat £20,000. FU. | \$12,500 |
| 180 | M | 1855 2d blue on blued paper, London print, imperf 3 good margins, cut into at top & back thin upper right corner. Good colour. Fresh appearance. CP A2a. Cat \$75,000. Odenweller cert (2011). SG 2. Cat £55,000. Unused no gum. | \$10,000 |
| 181 | U | 1855 2d dull blue on blued paper, London print, imperf 4 margins except just touches top RH corner, small back thin. SG 2. Cat £700. FU. | \$300 |
| 182 | U | 1855 2d blue on blued paper, London print x 2 imperf 2 margins, 3 margins. SG 2. Cat £1400. GU. | \$500 |
| 183 | U | 1855 1/- pale yellow-green horiz pair on blued paper, London print. Wmk letters "AGE" of "POSTAGE" in RH margin. Imperf 3 margins, slightly in at top, small piece out at foot affects only 1 stamp. 2 tiny thin spots under pmk. Rare multiple, Ex Pack, Forster. SG 3. Cat £12,000. FU. | \$3,300 |
| 184 | U | 1855 1/- yellow-green, London print, blued paper, 3 margins, uneven at foot. Repaired scissor cut at lower right side in margin. RPSL cert (1990). SG 3. FU. | \$1,500 |
| 185 | U | 1855 1/- pale yellow-green on blued paper, London print, imperf 4 margins, (pmk clear of face), small tear at side. SG 3. Cat £6000. GU. | \$500 |
| 186 | U | 1d, 2d x 2, 1/- all on blue paper, imperf 1d 2 margins, 2d no margins, 3 margins, 1/- no margins. SG 4-6. Cat £7150. FU. | \$750 |
| 187 | U | 1d red (2), 2d blue (4), 1/- green on blue paper, margins vary, some faults and repairs. SG 4-6. Cat £10,300. Used. | \$900 |

| | | | |
|-----|---|---|----------|
| 188 | U | 1d red on blue paper (bluing washed out), imperf 3 good margins (just touches on 4th at top), part letters LB of "Sands McDougall Melbourne". CP A1cy. Cat \$8000. FU. | \$1,000 |
| 189 | U | 2d blue on blue paper, imperf 3 margins, part letters "BO" of "Sands McDougall Melbourne" (generally no wmk paper). CP A2ba (SG 5 var). Cat from \$1350. FU. | \$500 |
| 190 | U | 2d blue on blue paper, imperf 4 margins, close at right. Fine barred "1" cancel (Auckland), cert mark. SG 5. Cat £325. FU. | \$275 |
| 191 | U | 1/- green on blue paper, imperf 4 margins, "1" pmk. SG 6. Cat £4000. FU. | \$1,500 |
| 192 | U | 1d dull orange, imperf, no wmk x 10. Mixed cond, some minor & major faults, 1-4 margins. Most with legible numeral cancels. SG 8. Cat £9000. GU/FU. | \$1,500 |
| 193 | U | 2d blue imperf no wmk x 22 - nice range shades incl deep ultramarine (SG 8a) & papers. Some 4 margins but mixed cond, most with faults mostly minor. SG 8a, 9-10. Cat £4000+. GU/FU. | \$1,250 |
| 194 | M | 1d dull orange, imperf 4 margins, no wmk. Small cut at base & 2 small tone spots in selvedge. SG 8. Cat £4250. Unused no gum. | \$1,250 |
| 195 | M | 1d dull orange imperf 4 margins, horiz mesh paper, no wmk. CP A1d(1). Cat \$8500. Odenweller cert (2006). SG 8. Cat £4250. Unused no gum. | \$2,500 |
| 196 | U | 2d dull deep blue, imperf 4 good margins, no wmk, horiz mesh paper. Very fine barred "16" cancel (Port Victoria). SG 11. Cat £325. VFU. | \$350 |
| 197 | U | 6d bistre-brown, imperf 4 good margins incl part adjoining stamp, premium example. SG 12. Cat £600. FU. | \$750 |
| 198 | U | 6d brown imperf no wmk x 27 - range of shades incl 1 bistre brown, 1 tan brown & 5 chestnut & both paper types. Mixed cond, various margins, many faults mostly minor but incl 5 oxidised. SG 12-15. Cat £11,700. GU/FU. | \$2,800 |
| 199 | U | 1/- dull emerald-green x 5 & blue-green x 5, imperf no wmk. Usual mixed cond but incl 2 x blue-green each 2-3 margins FU without back thins. SG 16-7. Cat £18,000. GU/FU. | \$2,000 |
| 200 | U | 1/- dull emerald-green, imperf 4 large margins, no wmk. Good colour, edge thin at foot, very fine appearance. SG 16. Cat £1800. FU. | \$1,400 |
| 201 | M | 1/- emerald-green imperf 4 good margins, no wmk. Regummed & diagonal bend at top left. Mint. RPSNZ cert (2022) which also states "otherwise sound as far as one can say under regumming". CPA6c(1). Cat \$50,000. | \$10,000 |
| 202 | M | 1/- blue-green, imperf 4 margins, repaired 1 side. Looks superb. SG 17. Cat £20,000. Unused. | \$5,000 |
| 203 | U | 6d brown, serrated perf 16/18 (Nelson) visible all 4 sides, no wmk. Fine barred "15" cancel (Nelson), printing pleats pressed flat at left & a small repaired tear near the top of the pleats. RPSL cert (1958) & RPSNZ cert (2022). Ex Travers, Beaumont, Dumas. CP A5av. Cat \$9500. SG 24. Cat £4500. | \$1,750 |
| 204 | U | 6d brown, Y roulette 18 (serrate perf 18 Nelson), no wmk. 1 blunt corner, light barred "15" cancel (Nelson). RPSNZ cert (1973). Ex Adam Hunter. SG 24. Cat £4500. FU. | \$3,500 |
| 205 | U | 1d dull orange, rouletted 7 discernable 3 sides, no wmk, ironed out crease. SG 27. Cat £6000. FU. | \$3,000 |
| 206 | U | 6d brown, rouletted 7, no wmk, clearly rouletted on 3 sides. SG 29. Cat £3250. FU. | \$2,000 |
| 207 | U | 2d pale blue, p13, no wmk, m/s on reverse "P13". 1 straight edge at left side, small thin at top on back. SG 31b. Cat £5000. FU. | \$1,000 |
| 208 | / | Davies prints, star wmk, imperf seln of 3: 1d vermilion, 1 margin others very close MNG (SG 34); 1/- yellow-green over-inked, 4 margins, small thin, faint cancel FU (SG 45); 1/- deep green, 4 margins, faint cancel FU (SG 46); also 1/- green 4 margins NZ wmk, ironed out crease FU (SG 100). SG cat £1775. | \$375 |
| 209 | M | 1d carmine-vermilion, imperf 4 margins very close at right, star wmk. SG 35. Cat £1000. Unused no gum. | \$400 |
| 210 | M | 1d carmine-vermilion, imperf 4 margins, star wmk. SG 35. Cat £1000. Unused no gum. | \$600 |
| 211 | M | 1d carmine-vermilion, imperf 4 margins except just touches 1 corner, star wmk. SG 35. Cat £1000. Unused no gum. | \$600 |
| 212 | U | 2d blue imperf seln of 12, star wmk, all 4 margins. Nice range of shades. SG 36-9 range. Cat approx £1350. Mostly FU, a few GU/FU. | \$750 |
| 213 | M | 2d pale blue (worn plate), 4 margins, horiz crease. SG 38. Cat £850. Mint. | \$250 |

| | | | |
|-----|---|--|----------|
| 214 | / | Small seln SG 40 & 111 unused; SG 5, 100, 110 x 2 & 132 horiz pair. Nice lot. SG cat £2295. (FU & unused). | \$1,000 |
| 215 | M | 3d brown-lilac imperf 4 margins, star wmk. SG 40. Cat £750. Unused no gum. | \$500 |
| 216 | U | 6d black-brown, 6d brown, 6d red-brown, imperf 4 margins, star wmk. Lovely colours. SG 41-3. Cat £510. VFU. | \$400 |
| 217 | M | 6d black-brown, imperf 4 margins, star wmk, light vert crease does not detract from appearance. SG 41. Cat £2500. Unused no gum. | \$1,000 |
| 218 | U | 6d red-brown strip of 4, full margins incl part 3 adjoining stamps, star wmk, flattened out vert crease, minor corner surface rub 1 stamp. Holcombe cert (1989). SG 43. Cat £600. | \$300 |
| 219 | M | 6d red-brown block of 4, imperf, good margins, touches 1 stamp. RPSL cert (1958). Scarce multiple. Ex Inoue. SG 43. Cat £8000. Mint. | \$15,000 |
| 220 | M | 6d red-brown, imperf 4 margins, star wmk. SG 43. Cat £2000. OG mint. | \$1,000 |
| 221 | M | 1/- yellow-green imperf horiz strip of 3, selvedge complete except middle stamp at top & R/H stamp cut into at right & clipped corner, star wmk. L/H stamp crease doesn't affect appearance. SG 45. Cat £7500. Unused no gum. | \$1,150 |
| 222 | U | 1/- bronze-green, imperf 4 good margins, star wmk. Heavy barred "018" cancel (Weatherstone). Odenweller cert (2015) confirming the scarcer shade but not the cancel. CP A6df. Cat \$2250. GU. | \$400 |
| 223 | U | 1d orange-vermilion, rouletted 7 discernable on 3 sides, star wmk. SG 47. Cat £1000. | \$500 |
| 224 | U | 3d brown-lilac, rouletted 7, faults. BPA cert (1947). SG 52. Cat £900. FU. | \$250 |
| 225 | U | 3d brown-lilac, rouletted 7, roulettes 2 sides. SG 52. Cat £900. FU. | \$600 |
| 226 | U | 6d black-brown rouletted 7 clearly discernable at sides, internal row at base incl part next stamp, trimmed at top, star wmk. SG 53. Cat £700. FU. | \$400 |
| 227 | U | 6d black-brown, rouletted 7 discernable all 4 sides, full margins, star wmk. SG 53. Cat £700. FU. | \$500 |
| 228 | U | 6d black-brown, rouletted 7, clearly discernable all 4 sides, star wmk. A couple very minor tone spots. RPSL cert (1937). SG 53. Cat £475. VFU. | \$240 |
| 229 | U | 1/- green rouletted 7 on 2 sides, star wmk, small corner thin. SG 56. Cat £950. VFU. | \$300 |
| 230 | M | 1/- yellow-green, rouletted 7 clearly discernable all 4 sides incl internal row at left, star wmk. Attractive. RPSL cert (1958). SG 57. Cat £4500. Unused. | \$1,500 |
| 231 | U | 3d brown-lilac, p13, star wmk. SG 74. Cat £600. GU/FU. | \$300 |
| 232 | U | 6d black-brown & 6d brown, p13, star wmk. SG 75-6. Cat £405. FU. | \$250 |
| 233 | U | Pelure paper seln: 1d, 2d, 6d, 1/- imperf, 6d rouletted 7, 2d, 6d p13. SG 81, 82, 85, 86, 88, 81, 93. Cat £7950. All FU. | \$1,000 |
| 234 | / | Pelure paper used seln on page: imperf 1d orange-vermilion x 2 (1 unused, repaired at top though good appearance for this rare stamp), 6d black-brown x 5 incl horiz pair, 1/- x 4 (incl 2 with 4 margins), p13 1d orange-vermilion cancelled with part Dunedin in oval bars, repaired upper right, 2d pale ultramarine, 6d black-brown & 1/- deep green (2). Condition very mixed. [SG 81 used RPSL cert (1989) & SG 90 RPSL cert (1994)]. SG 81, 82, 85, 86, 90, 92-4. Cat £32,800. Mint & used. | \$3,500 |
| 235 | U | Pelure imperf seln: 1d x 3 (incl 1 spacefiller), 2d (repaired), 6d x 8 & 1/- x 5. Mixed cond most with faults but incl 1 x 1/- 3 nearly 4 margins FU. SG 81, 83, 85-6. Cat £14,300 (excl 1d spacefiller & 2d). GU/FU. | \$2,500 |
| 236 | U | 1d, 2d, 6d, 1/- Pelures imperf used. 1d 4 margins back thin GU; 2d 3 margins, closed tear, GU/FU; 6d 4 margins GU/FU; 1/- 3 margins just touches on 4th. SG 81-2, 85-6. Cat £5500. FU. | \$2,000 |
| 237 | U | 1d orange-vermilion, imperf 3 close margins, Pelure paper, hinge thin, SG 81. Cat £2750. | \$500 |
| 238 | U | 1d orange-vermilion, imperf 2 margins, Pelure paper, some oxidation. RPSNZ cert (1977). SG 81. Cat £2750. FU. | \$500 |
| 239 | M | 2d pale ultramarine, imperf 4 good margins, minute spot on front. Holcombe cert (1995) "A very fine example of this stamp". SG 83. Cat £9000. Mint. | \$3,000 |
| 240 | U | 6d black-brown imperf 4 margins, Pelure paper, 2 cert marks & BPA cert (2012). SG 85. Cat £350. VFU. | \$275 |
| 241 | U | 6d black-brown imperf 4 margins, Pelure paper. SG 85. Cat £350. FU. | \$250 |
| 242 | U | 6d x 4, 1/- Pelure paper, p13. 1 x 6d trimmed perfs at base & another discoloured; 1/- trimmed 2 sides. SG 85-6. Cat £4500. GU/FU. | \$1,000 |

| | | | |
|-----|---|---|---------|
| 243 | U | 1/- deep green, rouletted 7 on 3 sides, Pelure paper, no wmk, closed tear at right. RPSL cert (1955). SG 89. Cat £2000. FU. | \$1,000 |
| 244 | U | 6d black-brown, Pelure paper, p13. SG 93. Cat £500. FU. | \$350 |
| 245 | U | 2d dull deep blue, thick soft unwmk paper x 6: 1 imperf (2 nearly 3 margins), 5 x p13. All with faults (imperf & perf only minor). All show characteristic minor plate wear. SG 96, 96a. Cat £5050. GU/FU. | \$1,000 |
| 246 | U | 2d dull deep blue, p13, thick soft unwmk paper, characteristic slight plate wear. Light ironed crease. Philatelic Fed of South Africa cert (2020). SG 96a. Cat £750. FU. | \$400 |
| 247 | M | 1d carmine-vermilion, imperf 3 margins incl close at left, close on 4th at right, NZ wmk. SG 97. Cat £950. Unused no gum. | \$300 |
| 248 | U | NZ wmk group: 2d & 1/- imperf both 4 margins FU; 6d p12½ FU; 1/- p13 GU/FU (1 short perf). SG 98, 100, 106, 108. Cat £1615. | \$575 |
| 249 | U | 2d pale blue (plate I worn), imperf 4 margins close at left, NZ wmk. Fine barred "2" cancel (Russell). SG 98. Cat £350. VFU. | \$250 |
| 250 | M | 6d red-brown, imperf 4 margins, NZ wmk. BPA cert (1965). SG 99. Cat £6000. Unused no gum. | \$5,000 |
| 251 | M | 1/- green, imperf 4 good to large margins, NZ wmk. SG 100. Cat £3500. Mint. | \$1,250 |
| 252 | U | 6d red-brown, rouletted 7 clearly discernable all 4 sides, NZ wmk, small back thin, heavy cancel. Brandon cert (2011) doesn't mention thin. SG 103. Cat £3250. GU. | \$1,000 |
| 253 | M | 2d pale blue (plate I worn) p13, NZ wmk, o/c. SG 105. Cat £1600. Regummed mint. | \$850 |
| 254 | M | 1d carmine-vermilion, p12½, star wmk. SG 110. Cat £275. Regummed, mint. | \$250 |
| 255 | M | 1d carmine-vermilion, p12½, star wmk. SG 110. Cat £275. Unused no gum. | \$250 |
| 256 | M | 1d orange, 2d blue, 2d orange, 3d, 4d yellow, 6d brown, 1/-, all p12½. 2d orange OG, rest no gum (1/- several toned perfs). Mint. | \$1,250 |
| 257 | U | 1d pale orange-vermilion horiz block of 8, scarce large multiple. SG 111. Cat £400. GU. | \$500 |
| 258 | M | 1d pale orange-vermilion, p12½, star wmk. SG 111. Cat £300. Regummed, mint. | \$275 |
| 259 | M | 1d pale orange-vermilion, p12½, star wmk. SG 111. Cat £300. Mint. | \$200 |
| 260 | U | 2d deep blue vert block of 6 on piece. Unusual multiple. Ex Yeroc. SG 114. Cat £180. GU. | \$250 |
| 261 | U | 2d blue plate II (retouched) x 6, p12½, star wmk - R16/3; R17/10 (x 2): R18/10 (on piece); R19/7 & undetermined (straight edge at right). SG 115a. Cat £450. GU/FU. | \$250 |
| 262 | U | 2d deep greenish blue block of 4 (plate II), p12½, star wmk. Odenweller cert (2004) which states "early state of the damaged plate that was not later retouched rows 3 & 14, pos 8 & 9". SG 115. Cat £120. GU. | \$100 |
| 263 | M | 2d blue (plate II), p12½, star wmk. SG 115. Cat £250. Regummed mint. | \$200 |
| 264 | U | 3d lilac & mauve shades x 7, p12½, star wmk. SG 117, 118. Cat £370. FU. | \$250 |
| 265 | U | 3d lilac & 3d mauve accidental imperfs, each 4 margins incl 3 good sides, side wmk. CP A3dT. Cat \$3000. GU/FU. | \$750 |
| 266 | U | 3d lilac x 7; 3d mauve all accidental imperfs, mostly about 3 margins incl 1 or more good to large (1 with minor toning, another large back thins). Some shade variation. CP A3dT. Cat \$12,000 (for good full margins). GU/FU. | \$1,250 |
| 267 | M | 3d lilac, accidental imperf, 4 good margins, star wmk. CP A3dT. Cat \$3000. Unused no gum. | \$500 |
| 268 | U | 3d deep mauve on piece, tied by "5" barred cancel (Timaru), accidental imperf 4 margins, good to large on 3 sides, star wmk. CP A3dT. Cat \$1500. GU/FU. | \$750 |
| 269 | U | 3d deep mauve, accidental imperf 4 margins (2 huge). (SG 118a, cat £2250 for pair). CP 3dT. Cat \$1500. GU/FU. | \$500 |
| 270 | U | 4d rose, p12½, star wmk. SG 119. Cat £300. FU. | \$275 |
| 271 | U | 4d rose, p12½, star wmk. SG 119. Cat £300. FU (pmk on face). | \$250 |
| 272 | M | 4d deep rose, p12½, star wmk. SG 119. Cat £3500. Unused no gum. | \$2,000 |
| 273 | U | double perfs: 2d blue double at right; 4d yellow double at base; 2d orange double at base. All p12½, star wmk. SG A2nz, A4bz, A2sz. Cat \$1550. FU. | \$650 |
| 274 | M | 6d red-brown, p12½, star wmk, cert mark. SG 122. Cat £350. OG mint. | \$300 |



ex 26



ex 29



ex 44



ex 41



ex 56



ex 59



ex 60



ex 79



ex 80



ex 81



ex 87



ex 83



ex 90



ex 92



ex 109



ex 103



ex 23



ex 116



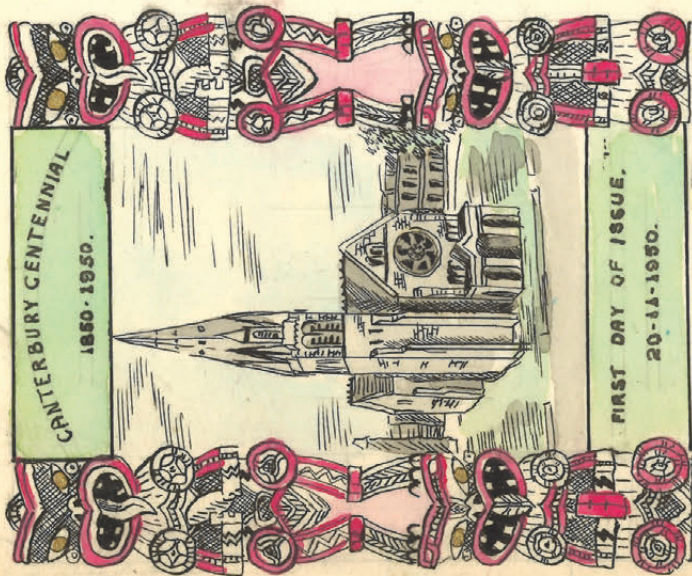
ex 123



ex 125



ex 121



EXHIBITION
20 NO 50.1
N.Z. CHRISTCHURCH

Mrs. D. Newcomb,
P.O. Box 88,
Port Hueneme,
California,
U.S.A.

OTAGO CENTENNIAL
FIRST DAY COVER,
1848 - 1948.

PAR AVION
ZEE FAAL

R
No. 769
DUNEDIN, C. I.



Mrs. Bruce Thomas
Glenview,
Farlee
South Australia





ex 127



ex 165



ex 170



ex 2



ex 162



ex 164



ex 161



ex 171



ex 163



ex 175



ex 174



ex 176



ex 166



ex 167

Per *Panama to Sydney*. Sept. 20 1852

1852
 mth. Sept. 23
 1853
 March 20
 April 8

Myself. Self. &
~~London~~
~~London~~
 General
 London Rectory
 near Birmingham

◀ ex 151

INTERNATIONAL
 1906
 N.Z.
 1907
 EXHIBITION

LETTER CARD

LORD PLUNKET, PATRON

NZ RIVERTON 10

MR. C. S. MUHRO
 GENERAL MANAGER

NEW ZEALAND INTERNATIONAL EXHIBITION,
 CHRISTCHURCH

SEP 24
 50A

1906-07.

Mr J. M. Donald
 23 Austin St
 Wellington

TE ARAITEURU PA,
 CHRISTCHURCH.

◀ 155

N.Z.
 -4 MAR 1914
 AUCKLAND

R
 90

AUCKLAND
 DOMINION OF NEW ZEALAND
 POSTAGE
 AUCKLAND EXHIBITION
 1913
 THREE PENCE

Mr. H. Downard,
 Rangiahua,
 Bay of Islands.

Registered at the Exhibition
 No 90.

\$ 350



◀ 157

L. L. Hills, Esqre
General Post Office,
~~WELLINGTON, C. 1.~~

*Heke St
Ngairo
N.H.*

OFFICE TELEGRAPHS.



Code:..... Handed in (Time):..... No. of Message:.....

| | | | |
|--|-------|--|---------------|
| Office of } Origin : } Instructions: | Words | Sent at.....m. To..... By..... Ackgt. recd. by..... | Office Stamp. |
|--|-------|--|---------------|

| | | |
|-------------|---|------------|
| CHARGES ... | For twelve words (including address and signature) ... 6d. For every additional word ... 1/2d. "Urgents," double above rates. | Checked by |
|-------------|---|------------|

This Telegram is presented for transmission by the undersigned, subject to the authorised conditions.

TO {

To ensure accuracy, cipher or preconcerted code messages should always be accompanied by a repetition fee, one-half rate extra.

All numbers should be written in words in full, and not in figures.

It must be written on the back of the message.

DAMAGED THROUGH IMMERSION
IN MANAWATU RIVER RAILWAY
ACCIDENT.



HOUSE
SELT
SERVICEMAN

Miss O. Crawford

1 Canine Bnd E

Wapiti.

▲ 160 - image reduced

◀ 158



178



181



182



183



184



185



188



189



190



191



194



195



196



197



200



202



203



204



205



206



207



209



210



211



213



215



217



218



220



221



222



223



224



225



226



227



228



229



230



231



237



ex 234



238



239



240



241



243



244



246



247



249



250



251



252



253



254



255



258



259



263



267



265



268



269



270



271



272



274



277



278



279



280



282



283



281



284



285



286



288



289



ex 290



294



ex 296



302



306



ex 336



320



ex 323



333



340



ex 342



344



345



343



351



354



383



372



358



401



399



364



403



415



384



402



413



420



421



422



ex 432



ex 434



435



444



ex 447



446



ex 449



ex 455



477



478



ex 483



ex 488



ex 489



500



501



ex 504



ex 506



495



515



508



ex 510



512



ex 509



513



ex 517



520



ex 530



ex 540



518



529



542



546



550



551



552



553



ex 554



555



556



562



564



566



568



576



578



579



602



ex 605



606



ex 609



616



ex 617



624



630



631

| | | | |
|-----|---|---|---------|
| 275 | U | 1/- green/yellow-green x 15, p12½, star wmk, range of shades. SG 124-5. Cat approx £2350. GU/FU. | \$850 |
| 276 | U | 1/- dull yellow-green block of 4, p12½, star wmk, perf tone 1 stamp. Odenweller cert (2004). SG 125. Cat £600. GU/FU. | \$250 |
| 277 | M | 1/- yellow-green, p12½, star wmk, 2 toned perfs. SG 125. Cat £400. Mint. | \$300 |
| 278 | M | 1d brown, p10. SG 126. Cat £1500. Regummed mint. | \$500 |
| 279 | M | 1d brown, p10 x 12½, star wmk, o/c. SG 128. Cat £425. Unused no gum. | \$280 |
| 280 | U | 1d brown (worn plate) accidental imperf 4 margins, star wmk, cert mark. CP A1qu. Cat \$3000. GU. | \$500 |
| 281 | M | 1d brown horiz strip of 3 (worn plate), p12½, star wmk. SG 132a. Cat £825. Mint. | \$750 |
| 282 | M | 2d orange, p12½, no wmk. SG 133. Cat £180. OG mint. | \$150 |
| 283 | M | 6d pale blue, p12½. SG 136. Cat £250. Unused. | \$250 |
| 284 | U | 2d vermilion, wmk "ER" (T.H Saunders). SG 138c. Cat £1100. GU/FU. | \$750 |
| 285 | M | 4d orange-yellow, p12½, no wmk. SG 139. Cat £300. Mint. | \$250 |
| 286 | U | 2d vermilion, p12½, NZ wmk. SG 141. Cat £275. GU nearly FU. | \$275 |
| 287 | U | 2d vermilion, p12½, NZ wmk x 6 + 1 retouch (R17/9). SG 141/a. Cat £3600. All GU (retouch FU) with minor faults. | \$600 |
| 288 | M | 2d vermilion, NZ wmk, hinge thin. SG 141. Cat £2500. Mint. | \$500 |
| 289 | U | 2d vermilion, lozenges wmk. SG 142. Cat £600. GU. | \$300 |
| 290 | U | 1d brown, 2d vermilion, 3d lilac, 4d yellow, 6d blue, 1/- green. All with star wmk, except 2d no wmk, 4d wmk double lined capitals. All with presentation cancels. A scarce set. Holcombe cert (1988). [SG 132, 138, 117, 139a, 136, 125. Cat £2890]. | \$2,000 |
| 291 | M | 1d red, 2d blue, 1/- green, imperfs all 4 margins. 1d small back thin, 2d is reprint, 1/- repaired. Nice appearance. All no gum. Unused. | \$500 |
| 292 | M | 1884 1d, 2d, 6d reprints (issued for presentation purposes), ovpt SPECIMEN in small sans serif letters. Holcombe cert (1988). SG priced £300. Mint. | \$300 |
| 293 | | 1884 1d pale orange (worn plate); 2d deep dull blue; 6d dull chocolate-brown reprints, imperf (1d 3 margins, 4 margins just touches 1 corner, 6d margins). CP priced \$675. | \$300 |
| 294 | S | 1d pale orange reprint (worn plate), imperf 4 margins very close at left, "SPECIMEN" ovpt in violet (sans serif 15 x 1½mm). CP ASP1x. | \$250 |
| 295 | | 2d dull blue reprint in top RH corner horiz block of 8. Scarce multiple. BPA cert (1980). SG priced £800. Unused. | \$750 |

First Sidefaces

| | | | |
|-----|---|---|-------|
| 296 | / | 1873-8 seln on 7 pages (incl Newspaper stamp issues). Noted ½d Newspaper wmk NZ MNG, 1d wmk large star GU/FU, 2d & 3d p12½ wmk NZ on star mint, 6d comp perf with only one side p10 FU, 6d p12 x 11½ mint, 1/- p10 x 12½ GU/FU; 2/- mint (gum remnants, nice appearance, o/c), 5/- GU/FU (reasonably well centered). SG cat £3500. Mint & used. | \$750 |
| 297 | / | 1873-92 ½d Newspaper stamp seln of 136 used & 48 mint on 2 s/b pages. Incl 11 letter wmk mint incl horiz strip of 4, 3 no wmk (2 mint, 1 used) & NZ wmk p10 x 12½ mint & used. | \$500 |
| 298 | M | 1873 ½d Newspaper stamp x 3: p10, NZ wmk; p12½, star wmk; p12½ NZ & star wmk. All OG. CP B1a, B2a, B3a. Cat \$420. Mint. | \$250 |

| | | | |
|-----|---|---|---------|
| 299 | P | c1874 1d orange, 2d blue, 3d mauve, 4d rose, 6d brown imperf plate proofs in block of 6 & 8. 1/- block of 32 incl plate "1" sheet marking & incl guttered between. All ovptd "CANCELLED", fine and rear. Ex Midas, Baillie. | \$3,500 |
|-----|---|---|---------|

| | | | |
|-----|----|--|---------|
| 300 | M | 1874 2d rose horiz strip of 4, p12½, 1 stamp creased. Ex Sir Gawaine Baillie. SG 153. Cat £1000. Mint. | \$600 |
| 301 | M* | 1874 3d block of 4, p12½. Ex Sir Gawaine Baillie. CP cat \$3200. Mint/MUH. | \$1,600 |
| 302 | M | 1874 4d irregular compound p12½ & p10 (p10 at top, p12½ others). BPA cert (1951). Ex Sir Gawaine Baillie. SG 162. Cat £1000. Mint. | \$800 |
| 303 | M | 1874-8 specialised range of 22 to 1/-. All fresh, condition generally good or better. Jury cat \$6870. Mint. | \$1,400 |

BIDS BELOW 70% OF ESTIMATE WILL NOT BE CONSIDERED

| | | | |
|-------------------------|----|---|---------|
| 304 | PU | c1874-82 range of Specimen ovpts etc, FSFs imperf block of 4 to 1/- (ovpt cancelled), set to 1/- ovpt pairs to 2/- ovpt Specimen some indistinct x 3 sets, SSF pairs to 1/-, presentation cancels to 5/-, 1882 QVLTs to 15/- ovpt Specimen, 1882 QVLT 3/- to £4 ovpt Specimen, 25/- to £10 (9) ovpt Specimen. A remarkable assembly (186 stamps). | \$6,000 |
| 305 | U | 1874-95 Sidefaces to 5/- used, 47 stamps on page, condition varies. STC £2208 (17 FSF & 30 SSF). | \$200 |
| 306 | M | 1874 2/-, 5/-. Jury cat \$2200. Mint. | \$1,400 |
| 307 | U | 1874 set of 8. Jury cat \$1800. FU. | \$750 |
| 308 | M | 1874 simplified set of 8, very minor gum tone 2d & 5/-, 6d back thin. Jury cat \$3800. Mint. | \$1,000 |
| 309 | M | 1874 short set of 6 to 1/-. Jury cat \$2020. Mint. | \$800 |
| 310 | * | 1875-92 ½d Newspaper stamp blocks of 4 x 3: 1) 1875, p12½, small star wmk; 2) 1875 nearly p12, small star wmk; 3) 1892 p12½, NZ & star wmk. CP B2a, B2b, B3a. Cat \$1480. MUH. | \$600 |
| 311 | U | 1875 1d, 2d provisional printings, wmk large star, p12½. CP C1d, C2c. Cat \$1100. GU/FU. | \$350 |
| 312 | M | 1875 2d, p12½, wmk large star. Ex Sir Gawaine Baillie. SG 179. Cat £1000. Mint. | \$800 |
| 313 | / | 1874-8 ½ to 5/- seln of 278 used & 42 mint on 5 s/b pages. Incl 3d (17 used, 2 mint, 2 MNG), 4d (25 u, 5 m, 2 MNG), 6d (42 u, 3 m, 1 MNG), 1/- (25 u, 34 MNG), 2/- (6 u, 2 m, 1 MNG) & 5/- (3 u, 1 m, 1 MNG). Noted 1d prov large star wmk GU x 5, 4d horiz pair p12 x 11½ GU, 4d p10 x 12½ irregular compound perf mint (toned) & GU x 2. High CV. Identified by CP No's. | \$2,500 |
| 314 | M | 1878 2d rose, perf nearly 12. Ex Sir Gawaine Baillie. SG 158a. Cat £1500. Mint. | \$500 |
| 315 | M* | 1878 6d block of 4 (2), p12 x 11½, with LH selvedge. Ex Sir Gawaine Baillie. SG 183. Cat £900 (Jury cat \$2800). Mint/MUH. | \$1,800 |
| 316 | * | 1892 ½d Newspaper stamp, p12½, NZ & star wmk, triple horiz row of 36 stamps, central row comprises NEW ZEALAND letters wmk, fresh although odd gum wrinkle. CP B3a, B3a(Z) & B3a(Y). Cat \$2695. MUH. | \$1,000 |
| Second Sidefaces | | | |
| 317 | / | 1882-1900 seln of 648 used & 149 mint on 18 s/b pages. Incl 2½d (56 used, 17 mint), 3d (46 u, 11 m), 4d (42 u, 10 m), 5d (30 u, 9 m), 6d (75 u, 14 m), 8d (20 u, 8 m) & 1/- (51 u, 17 m). Noted ½d p11 wmk sideways, invtd & reversed HH mint, 6d Die 2 p12 x 11½ mint & 4 used, 8d p12 x 11½ MUH, 1/- p12 x 11½ on Life Ins paper GU/FU & p10 x 11 with bulbous white flaw on rose mint. Identified by CP No's. | \$2,000 |
| 318 | / | 1886-97 attractive accum on 23 pages incl a few used. Many varieties, blocks etc STC \$7000+. Mint & used. | \$2,000 |
| 319 | / | 1893 seln of 78 adverts SSF p10 stamps on 8 s/b pages. Incl 35 stamps with FV 2½d or higher. Noted 1d blue advt used x 2, 2½d used x 17, 6d & 8d MUH, 1/- mint x 2 & horiz pair used. CP cat \$6000+. Mint/MUH/used. | \$1,000 |
| 320 | M | 1893 3d horiz pair, Lattey & Poneke adverts in red. Ex Sir Gawaine Baillie. SG 221a. Cat £400. Mint. | \$400 |
| 321 | * | 1895 ½d block of 4, original issue, p12 x 11½, scarce multiple. Ex Sir Gawaine Baillie. SG 194. Cat £209. CP cat \$800. MUH. | \$450 |
| 322 | M* | 1896 4d bluish green block of 4, p11. Ex Sir Gawaine Baillie. SG 241a. Cat £220. 2 mint/2 MUH. | \$400 |
| 323 | M | 1896 4d vert pair showing double perforations between & 4d corner single showing double perfs at side (light tone). Ex Sir Gawaine Baillie. CP D6g. Cat \$900. Mint. | \$300 |
| 324 | * | 1897 2½d block of 16, p11, 2 stamps perf tone. SG 239. Cat £880. MUH. | \$1,000 |
| 325 | M* | 1897 5d p11 horiz block of 12 (4 x 3). 3 stamps hinged, hint of crease on 2 columns. CP D7f. Cat \$3525. Mint/MUH. | \$650 |
| 326 | U | Presentation set of 10 (diagonal lines across lower right corner) with gum. Mostly fine. 1d thin, 2d no gum. | \$850 |
| 1898 Pictorials | | | |
| 327 | U | 1898-1907 seln to 1/- on 13 s/b pages. ½d Mt Cook purple x 44, 1d Taupo x 58, 2d Pembroke brown x 45 (incl postally used proof); 2½d Wakatipu x 12; 2½d Wakatipu x 74, 3d Huias x 90, 4d Terraces x 26; 5d Otira x 64; 6d Kiwi green x 26; 8d Canoe x 35; 9d Terraces x 62 (incl p11 invtd wmk & p11 reversed wmk); & 1/- Kaka x 68 (incl CP EV18d R10/11 variety). Identified by CP Nos. Cat approx \$10,000. GU/FU. | \$1,750 |

LIVE ONLINE BIDDING AVAILABLE THROUGH OUR WEBSITE VIA AUCTION MOBILITY

| | | | |
|-----|----|---|---------|
| 328 | M* | 1898-1907 seln of Pictorials to 1/- on 8 s/b pages. ½d Mt Cook purple (16 mint, 4 MUH); 1d (11 m, 10 MUH); 2d Pembroke brown (7 m, 2 MUH); 2½d Wakatipu (5 MUH, 16 m); 2½d Wakatipu (2 MUH, 19 m); 3d Huias (26 m); 4d Terraces (3 MUH, 15 m incl CP EV11e R8/8 variety); 5d Otira (33 m); 6d Kiwi green (13 m); 8d Canoe (25 m incl p11 imperf at top); 9d Terraces (6 MUH, 21 m); & 1/- (22 m). Identified by CP Nos. Cat simpl \$22,000. Mint/MUH. | \$3,000 |
| 329 | M | 1898 2½d Wakatipu vertical strip of 3, imperf horizontally. Ex Sir Gawaine Baillie. SG 260b. Cat £750 (pair). Mint. | \$1,200 |
| 330 | M | 1898-1907 seln of 8 birds: 1) 1898 3d Huias London print, 6d green Kiwi p11 x 2 (deep green & pale green shades), 1/- Kaka p11; 2) 1900 6d red Kiwi p11; 3) 1907 reduced 3d Huias p14 x 12¾-13¼, 6d carmine pink p14 x 15 & 1/- Kaka orange-red p14-15. CP cat \$1450. Mint. | \$600 |
| 331 | U | 1898-1906 seln of 2/- Milford & 5/- Mt Cook on 3 s/b pages. 2/- Milford x 44 (33 postal, 11 fiscal) & 5/- Mt Cook x 23 (13 postal, 10 fiscal). Identified by CP Nos. Cat simpl approx \$9500. GU/FU. | \$1,250 |
| 332 | M | 1898-1906 2/- & 5/- seln on 2 s/b pages. 2/- Milford (18 mint, 9 MNG & 3 fiscal), incl laid paper x 3 mint; 5/- Mt Cook (6 mint, 3 MNG, 1 fiscal). Some faults, identified by CP Nos. Cat simpl \$12,350+ (excl MNG & fiscals). Mint. | \$2,000 |
| 333 | M | 1898-1906 5/- Mt Cook x 3: London print, p11 no wmk & p11 wmk sideways. CP E21a, 21b, 21c. Cat \$2250. Mint. | \$1,000 |
| 334 | M | 1898 simplified set of 14 to 5/-. Jury cat \$2000. Mint. | \$850 |
| 335 | M | 1898 London print set of 14 (1898 3d & 5/- HH mint); 1900 (6) & 1907 redrawn (4) simplified sets on Hagner page. Jury cat \$2845. Mint. | \$750 |
| 336 | * | 1898 Pictorials set to 5/-, London print. Rare in this condition. CP cat \$7575. MUH. | \$4,500 |
| 337 | * | 1898 short set of 12 to 1/-. Jury cat \$1900. MUH. | \$800 |
| 338 | U | 1899-1900 seln of 6 double perfs: 1d Terraces FU; 1½d Boer War heavyish cancel; 2d Pembroke purple (3 diff shades); & 5/- Otira, no wmk FU. CP E30a(z), E4a(z), E6a(Y), E13b(z). Cat \$1500. GU/FU. | \$500 |
| 339 | M* | 1899 2½d Wakatipu block of 4, p11, no wmk, reperfed down centre with official patch, lower pair unhinged. CP E8b/z. Cat approx \$900. Mint/MUH. | \$400 |
| 340 | M* | 1899 6d Kiwi yellow-green block of 4, p11. Ex Sir Gawaine Baillie. SG 264a. Cat £600. 2 Mint/2 MUH. | \$1,000 |
| 341 | U | 1900 seln of 1900 Pictorials (excl ½d green Mt Cook) on 6 s/b pages. 1d Terraces x 73, 1½d Boer War x 32 (incl brown shade x 1 & p14 x 2), 2d Pembroke purple x 90, 4d Taupo x 43 (incl CP EV12a R1/3 variety, p14 wmk reversed x 6) & 6d red Kiwi x 130 lovely range of shades (incl CP EV14b R1/1 variety, p11 Cowan imperf at top x 2 & proofs postally used x 2). Identified by CP Nos. Cat simpl \$3300+. GU/FU. | \$750 |
| 342 | M | 1900-7 specialised seln of later issues (excl ½d green Mt Cook) on 2 stock pages. 1d Terraces x 22, 1½d Boer War x 43 (incl imperf at bottom with selvedge variety, but toned); 2d Pembroke purple x 20, 4d Taupo x 18 & 6d red Kiwi x 31 (incl p14 x 7). Noted 4d centre shift 3mm downwards (MUH). Identified by CP Nos. Cat simpl \$6175. Mint. | \$1,250 |
| 343 | M* | 1900 1½d Boer War horiz strip of 3, imperf vertically, p11. CP E4ax. Cat \$2500 for pair. Mint/MUH. | \$1,000 |
| 344 | M | 1900 3d Huia horiz pair, imperf between, no wmk, part patchy gum. Ex Sir Gawaine Baillie. SG 261a. Cat £1500. Mint. | \$1,000 |
| 345 | M | 1900 6d Kiwi rose horiz pair, imperf between p11, no wmk, minor creasing. Ex Sir Gawaine Baillie. SG 265b. Cat £1300. Mint. | \$800 |
| 346 | * | 1900 set of 6. Jury cat \$450. MUH. | \$200 |
| 347 | * | 1902 4d Taupo complete (unfolded) sheet of 80 (10 x 8), p11, wmk paper with complete vert row double perfs at right, towards top the perfs are superimposed causing inevitable perf seps. A magnificent item, possibly unique. CP cat \$4880 (+ the 7 CP recorded flaws & re-entries). CP E12b/z. MUH. | \$2,000 |
| 348 | M | 1902 2/- Milford, p11, no wmk, laid paper, slightly HH. CP E20c. Cat \$1000. Mint. | \$300 |
| 349 | M | 1903 2d Pembroke purple, compound perfs 11 & 14, slightly HH. CP E6c. Cat \$1500. Mint. | \$500 |
| 350 | * | 1903 2½d Wakatipu, p11, Cowan paper, reversed wmk. CP E8c(x). Cat \$575. MUH. | \$250 |
| 351 | M | 1903 4d Taupo horiz strip of 3 imperf vertically p14. Ex Sir Gawaine Baillie. CP E12cy. Cat \$1800 for pair. Mint. | \$1,800 |
| 352 | * | 1903 4d Taupo, p14, wmk reversed, well centered. CP E12c(w). Cat \$550. MUH. | \$250 |
| 353 | * | 1903 9d Terraces, p11, invtd wmk. CP E17c(Y). Cat \$725. MUH. | \$350 |
| 354 | U | 1903 2/- Milford, p11, Cowan paper, invtd wmk, very well centered. CP E20d(Y). Cat \$450. FU. | \$250 |

| | | | |
|-----|----|---|---------|
| 355 | M | 1903 2/- Milord, p11, Cowan paper, invtd wmk, good centering. CP E20d(Y). Cat \$1750 (MUH). Mint. | \$400 |
| 356 | M | 1903 5/- Mt Cook deep red, upright wmk, p11. RPSL cert (1984). SG 317a. Cat £400. LH mint. | \$150 |
| 357 | * | 1906 2/- Milford, p14, upright wmk. CP E20e. Cat \$1100. MUH. | \$400 |
| 358 | M | 1906 5/- Mt Cook block of 4, p14, sideways wmk. SG 329. Cat £1600. LH mint. | \$1,000 |
| 359 | * | 1907 redrawn set of 4. Jury cat \$1800. MUH. | \$800 |
| 360 | U | 1907 seln of redrawn (reduced) issues (excl 1d Universal) on 2 stock pages. 3d Huias x 24, 6d Kiwi x 17 & 1/- Kaka x 14. Identified by CP Nos. Cat simpl \$2000+. GU/FU. | \$300 |
| 361 | M* | 1907-8 seln of redrawn (reduced) issues (excl 1d Universal) on 1 s/b page. 3d Huias x 20 (mint x 15, MUH x 5), 6d Kiwi x 10 (6 m, 4 MUH), & 1/- x 5 mint (1 no gum). Identified by CP Nos. Cat simpl \$6750+. Mint/MUH. | \$1,000 |
| 362 | / | 1907-9 redrawn colln on pages. Mint incl: 3d p14, 3d (5), 6d (7) p14 x 13, p13½ 3d (7), 4d (8), 6d pair, 1/- (5). P14 x 15 ½d block of 6 with double perfs, 3d (5), 6d (6) & 1/- (7). Used throughout generally good to fine. SG cat £5000+. Mint/MUH/used. | \$2,000 |
| 363 | * | 1908 6d Kiwi reduced horiz pair, p14 x 15, with bottom selvedge incl arrow & circle sheet markings. CP E15c. Cat \$700+. MUH. | \$400 |
| 364 | M | 1908 1/- Kaka reduced, p14 x 15, both shades, very lightly hinged. CP E19b. Cat \$1200. Mint. | \$700 |
| 365 | * | 1908 1/- Kaka reduced, p14 x 15. CP E19b. Cat \$1000. MUH. | \$400 |

½d Mount Cook

| | | | |
|-----|---|---|---------|
| 366 | / | 1900-1 Specialised colln on 11 annotated leaves. Mint & FU with good seln of shades, perfs & multiples. 223 incl Pirie paper p11 mint (57) used (28); p14 mint 10, used 7; p11 & p14 mixed mint (8) & used block of 24 showing mixed perf on 6. CP cat \$7000+. | \$1,800 |
| 367 | / | 1900-8 seln of 287 mint & used on 6 s/b pages. Incl 1902 p14 x 11 very LHM, 1902 mixed perfs FU & 1902 p14 wmk invtd & reversed (horiz pair MUH & mint). Identified by CP Nos. Mint/MUH/used. | \$800 |

1d Universals

| | | | |
|-----|----|---|---------|
| 368 | C | 1901 (1 Jan) 1d Universal FDCs x 3 diff: a) printed text (green), CP G1a(Y), canc Christchurch cds (addressed to stamp dealer F.C.B. Bishop); b) printed text (blue), G1a(X), Christchurch cds; c) plain CTO cover (horsedriver on flap), Burwood A-type cds, with r/s "First Day of Century" (blue) & "First of Universal Post" (red). All fine. Ex Horrell. CP cat \$1775. | \$1,000 |
| 369 | M | 1901 Basted Mills horiz pair imperf vertically, p14 horiz. CP G3bx. Cat \$975. Mint. | \$300 |
| 370 | / | 1901-8 seln of 515 (410 used, 75 mint, 30 MUH), incl a variety of shades & 40 "official" stamps (30 u, 7 m, 3 MUH), on 7 s/b pages. Noted Pirie p14 x 11 m & p11 x 14 reperfed 11 vertically FU but a little grubby, Basted Mills p11 MUH, mint & FU singles & mixed perfs x 3 GU/FU, Cowan no wmk mixed perf vert pair mint & singles x 4 GU/FU, Cowan p14 wmk invtd & reversed, singles MUH & FU, vert pair & block of 4 imperf horiz & R1/1 NY flaw, Cowan p11 x 14 wmk GU/FU x 2, Waterlow p14 MUH x 2 & horiz pair imperf vert MUH, Royle p11 mint x 2 & p11 x 14 mint, surface-printed MUH, Waterlow plates "official" MUH x 2 & surface-printed "official" MUH with shortish bottom perfs. Identified by CP Nos. CP Cat \$17,000+. | \$1,500 |
| 371 | / | 1901-8 specialised mint & used colln on annotated pages - noted: CP G1a-11a (G3b not G3a) used; Cowan no wmk p14 x 11 mint; reserve plate mixed perfs GU; dot plate mixed perfs FU; 3 normal (2 trimmed) & 4 official booklet panes mint; Dickie machine roulette 14½ & 2 holes dot plate FU; about 35 identified re-entries; 1d King EVII Land FU etc etc. High cv. | \$1,350 |
| 372 | M | 1906 Waterlow plates - "W1" & "W2" plate blocks of 4, p14. CP G9a var. Cat \$2500. LH mint. | \$1,250 |
| 373 | M* | 1906 Royle plate series of 6 perf varieties: 1) p14 mint; 2) p11 mint; 3) p14 x 11 mint; 4) p11 x 14 MUH; 5) mixed perfs mint & 6) p14 x 14½ comb o/c MUH. CP G10a-10f. Cat \$2190. Mint/MUH. | \$400 |

King Edward VII

| | | | |
|-----|---|---|-------|
| 374 | / | 1909-16 specialised colln on annotated pages incl officials, nearly all mint/MUH, total 49 stamps. Noted 6d p14 x 13½ FU; 8d p14 (line) ; 8d 2 perf pair; booklet pane continuous binding selvedge bars, pane no binding selvedge. Good cv. | \$650 |
|-----|---|---|-------|

MOST LOTS ILLUSTRATED ON-LINE AT WWW.MOWBRAYCOLLECTABLES.COM

| | | | |
|-----|---|--|---------|
| 375 | / | 1909-16 seln of 287 (29 MUH, 54 mint, 204 used) on 4 s/b pages. Noted ½d p14 x 15 offset on back MUH (toned) & R3/18 "under NY" flaw FU, 3d p14 x 13½ MUH (minor toning), 5d vert 2 perf pair x 2 FU (1 with parcel cancel), 6d p14 x 13½ MUH x 3 & GU/FU x 3, 8d p14 x 13½ with invtd wmk MNG & p14 (line) no wmk in pair with normal x 2 (MUH, mint) & 1/- p14 x 14½ R10/1 "V" in REVENUE" doubled FU. Identified by CP Nos. CP cat \$18,000+. | \$2,000 |
| 376 | / | 1909-16 specialised mint/MUH colln on 2 pages & 2 Hagners incl officials. Incl perf vars & 2 perf pairs (5d, 5d block of 4, 6d, 8d x 4 incl block of 4 official). Also noted 1/- official block of 4 (3 MUH). 75 stamps. CP \$5500+. | \$1,150 |
| 377 | M | 1909 EVII set & 1913 Auckland Exbn set. Jury cat \$1275. Mint. | \$150 |
| 378 | * | 1909 simplified set of 10 (incl 1d Dom). Jury cat \$1100. MUH. | \$400 |
| 379 | * | 1909 set of 9 in blocks of 4 (4d orange LH 1 stamp, 6d 2 hinged). Jury cat \$4200. MUH. | \$875 |
| 380 | * | 1909-10 line p14 set of 5 (3d, 4d, 5d, 6d, 1/-). H32b, H4b, H5a, H6a & H8a. Cat \$1450. MUH. | \$600 |
| 381 | M | 1910-16 2 perf pairs set of 4 (3d, 5d, 6d & 8d). CP H3e, H5d, H6e, H7d. Cat \$1950. Mint. | \$800 |
| 382 | M | 1910-16 8d 2 perf pairs x 2, indigo-blue & deep bright blue shades. CP H7d(1) & (2). Mint. | \$250 |
| 383 | U | 1915 5d 2 perf pair. CP H5d. Cat \$700. FU. | \$300 |

1d Dominions

| | | | |
|-----|----|--|---------|
| 384 | C | 1909 1d FDC: plain reg'd cover, franked 1d Dom, ½d EVII (pair), 2d EVII, canc 2 neat strikes of "CHRISTCHURCH / REGISTERED" B-type cds 8 NO 09, addressed to A. Schlesinger (local stamp dealer). Very fine, ex Horrell. CP cat \$3000 (for 1d Dom FDC alone). Rare. Recorded by Thackery. | \$2,000 |
| 385 | M* | 1924-5 Jones unsurfaced paper block of 4, soft pale shade, top pair unhinged. CP cat approx \$8000. Mint/MUH. | \$1,900 |
| 386 | * | 1925 DLR unsurfaced paper, DLR sideways letter wmk. CP J3a, J4ax. Cat \$485. MUH. | \$250 |
| 387 | * | 1925-6 DLR unsurfaced paper, Cowan & WT, all as blocks of 4. CP J3a, J6a, J8a. Cat \$2200. MUH. | \$450 |

King George V

| | | | |
|-----|---|--|---------|
| 388 | P | Perkins Bacon & Co engine - turning proof, die proof of the engine-turning used to surround the King's head, in black on thin wove paper (102 x 104mm). Ex Midas, ex Baillie. | \$600 |
| 389 | P | 3d recess die proofs x 2 in black, 2nd state (infill of stars more definition), on horiz laid paper (1 glazed), to test the depth of engraving (approx 75 x 85mm). One has some creasing. | \$750 |
| 390 | P | 3d recess colour trial die proof in carmine, 2nd state (infill of stars more definition), on wove paper (68 x 76mm). | \$500 |
| 391 | P | 3d recess colour trial die proof in green, 1st state (infill of stars little definition), on wove paper (143 x 83mm). | \$500 |
| 392 | P | 3d recess colour trial die proof in green, 2nd state (infill of stars more definition), on wove paper (68 x 76mm). | \$500 |
| 393 | P | 3d recess colour trial die proof in orange-vermilion, 1st state (infill of stars little definition) on wove paper (70 x 75mm). | \$500 |
| 394 | P | 3d surface die proof in purple on thin unwmkd glazed paper, 3rd state (lines in stars well defined), printed to test the depth of engraving (123 x 87mm). | \$750 |
| 395 | P | 9d die proof in black on wove paper, in black, to test the clarity of the printing (59 x 74mm). | \$500 |
| 396 | P | 1½d - 1/- recess plate proof colln on imperf in black on 4 very well written up pages (in mounts), various papers wmkd & unwmkd incl 3 invtd wmk & 4d block of 4 ovpt "CANCELLED" - 28 singles, 10 horiz pairs & block of 4 (total 52 stamps). | \$1,000 |
| 397 | | "Colour Print" recess seln imperf on wmk paper, most in issued colours with various shades - 1½d x 2 horiz pairs, 2d purple x 2 horiz pairs, 3d block of 4, 3d yellow block of 4, 4½d x 3 horiz pairs & single, 7½d x 2 horiz pairs (27 stamps). | \$1,000 |
| 398 | * | 1915 2d violet plate blocks of 4 - Nos. 15 & 16. (Very minor creasing on no. 16). CP K2a. Cat \$1600. MUH. | \$750 |
| 399 | * | 1915 2d aniline violet shade, block of 4 with top selvedge, p14 x 13¼. (A couple small tonespots on selvedge). CP K2a 3. Cat \$3800. RPSNZ cert (2022). | \$1,500 |

BID BY MAIL, FAX, TELEPHONE, E-MAIL OR ONLINE AT WWW.MOWBRAYCOLLECTABLES.COM

| | | | |
|-----|----|--|---------|
| 400 | * | 1915 2d yellow recess complete sheet of 120 split vertically into 2 panes of 60 (missing lower selvedge). (1 pane perf seps effectively removing all 6 2-perf pairs). Incl plate block, R1/6 & R4/10 re-entries etc. Some selvedge blemishes. CP K5a,b,c, etc. Cat \$2250+. MUH. | \$650 |
| 401 | * | 1915 6d carmine-rose shade, p14 x 13¼. RPSNZ cert (2022). CP K8a7. Cat \$275. MUH. | \$200 |
| 402 | * | 1915 6d carmine vertical block of 6, centre pair imperf at sides & base, lower pair imperf at top other sides p14 x 13¼. 2 faint discolouration spots at top & minor printing ink gum adhesions. CP K8ay. Cat \$10,500. MUH. | \$4,000 |
| 403 | * | 1915 9d sage-green block of 4 with LH selvedge, p14 x 14¼. CP K11b. Cat \$800. MUH. | \$450 |
| 404 | / | c1915-c1930 specialised mint/MUH colln/accum on 3 Hagners, most value in 2 perf pairs - 1½d x 3, 2d violet x 2, 2d yellow, 2½d x 4 (incl blk of 4), 3d x 3, 4d yellow x 5 incl 2 blk of 4s, 4d violet x 2, 6d x 3 incl blk of 4, 7½d x 6 incl blk of 4, 8d x 3 incl blk of 4, 9d. Also 4 other blk of 4s incl 4½d plate blk (no side selvedge), 1d Field Marshal imperf proof pair; & Admirals 2/- x 2 (both papers) & 3/-. | \$950 |
| 405 | C/ | c1915-30 surface prints colln on pages. Noted 46 covers, incl 1 Express Delivery, halfpenny ovpt on 1d Admiral on piece, 2/- Admiral on flight cover. Mint & Used. | \$1,000 |
| 406 | / | 1915-c1930 Surface prints colln/accum on Hagners. All values, printings, perfs, nice shade varieties etc incl Officials. Noted: 1d Dom full offset horiz pair mint; 1d Dom DLR unsurfaced mint; 13 imperf plate proofs (some in multiples); 2d x 5 incl horiz pair art paper FU; 1d Dom art "wmk" on front mint; 1d Dom single & B of 4 grossly misperfed (toning); 1d Field Marshal 1927 x 13, Cowan reverse wmk - incl apparently all the shades; 2/- Admiral 16 used x 4 mint; 3/- Admiral 7 used & 2 mint etc etc. About 750 stamps & 13 covers. Good range mint & used. | \$2,300 |
| 407 | M | 1915-30 Recess set of 14 2 perf pairs to 1/-. SG 416b-430c. Cat £578. Mint. | \$250 |
| 408 | M* | 1915-33 mint seln incl recess 2 perf pairs & blocks, plate No's, shades etc to 1/- (8). Range of typo plate proofs to 3d (29). Mostly good to fine. MUH/mint. | \$1,000 |
| 409 | / | c1915-33 surface range incl Admirals & Officials, range of shades, dupn etc. Noted 2d Cowan offset; ½d & 1d booklet panes; 2/- x 5 mint; 3/- x 3 (1 MUH, 2 mint); 2/- Official mint & 3 used, approx 300v. Also 60 x 1d Universals incl Pirie pair imperf vert between, gum toned. | \$725 |
| 410 | * | 1915 1/- vermilion shade plate block of 6 - No. 27, p14 x 13¼. CP K12a1. Cat \$2400. MUH. | \$1,100 |
| 411 | * | 1915-8 seln of MUH from top right corners of sheets with sheet No's. Incl ½d 2 singles & block of 4, 1½d black (surface) single, 1½d brown 8 singles & vert pair, 2d yellow (surface) 14 singles & block of 4, 4d violet horiz pair. Jury cat \$600+ (MUH stamps only). MUH. | \$500 |
| 412 | * | 1916 1½d grey top LH corner horiz block of 8 incl double perfs at top, p14 x 13¼, provisional issue. 1 small tone spot in selvedge. CP K1dy. Cat \$2000. MUH. | \$750 |
| 413 | M | 1916 4d violet block of 4. Upper stamps totally imperf, lower stamps imperf at top, rest sides p14 x 13¼ (1 short perf). CP K5dz. Cat \$8000 (MUH). | \$2,000 |
| 414 | | Perkins, Bacon & Co essays, sepia photographs of 3 designs mounted on thick card (130 x 142mm) (note these were produced as not satisfied with design submitted by Richardson - all 3 rejected by NZ Post Office). Ex Darge, Baillie. | \$750 |
| 415 | * | 1922 5d blue imperf horiz pair. SG 424a. CP K7ay. Cat \$1600. MUH. | \$600 |
| 416 | M | 1922 5d blue imperf horiz pair. RPSNZ cert (2009). SG 424a. CP K7ay. Cat \$1600. Mint. | \$375 |
| 417 | M | 1922 5d blue vertical pair, upper stamp imperf, lower stamp imperf at top (fold along this line), rest of stamp p14 x 13¼. CP K7ax. Cat \$1750 (MUH). | \$400 |
| 418 | C | 1923 1d Map, plain FDC (to W.T. Wilson in GB), canc neat Porirua cds 1 OC 23. Also 1d Field Marshal plain FDC canc fine Thames South cds 15 NO 26 (cover bend) & FM PPC canc clear Christchurch cds 15 NO 26. All fine. Very scarce trio. Ex Horrell. CP cat \$2050. | \$1,250 |
| 419 | M | 1926 4d blackish-violet plate block of 4 - No. 44. RPSNZ cert (2021). CP K5g(2). Cat \$2000 (MUH). Mint. | \$750 |
| 420 | * | 1926 2/-, 3/- Admirals. CP K20a, 21a. Cat \$1050. MUH. | \$400 |
| 421 | M | 1927 4d blackish-violet 2-perf pair (p14 x 14¼ over p14 x 13¼), from plate 44, also incl R5/8 retouch to crown mint. [RPSL cert (2001) recognising configuration of perfs but referring to then current SG cat ref (now SG 422hb) with wrong shade & not recognising retouch]. CP K5jp. Cat \$12,000 (MUH). | \$5,000 |
| 422 | M | 1928 1/- orange-brown shade, p14 x 14¼. Several small tone spots. CP K12b4. Cat \$2500. RPSL cert (1981). Mint. | \$750 |
| 423 | | Recess presentation set of 11 with some minor shade vars (total 19 stamps) all p14 x 13¼, incl 2d yellow (no 4d purple, 5d, 8d blue, 8d brown as issued later). All with 2 small corner diagonal cancels. CP cat approx \$1200. | \$750 |

1935 Pictorials

- 424 C 1935 ½d-3/- colln of 20 diff printed FDCs, identified by Jones 2004 cat Nos. Noted NZPO official set D35.1A 6 diff designs, each stamp on separate cover to same address (P cat \$500); ditto 1d, signed by designer R.J.G. Collins; rare 1B (faults); rare 1C & 2 similar with r/s, unlisted. Also 2 unlisted hand-drawn ink designs: Maori carving (with 1d), ship (with 2½d). Also printed "Last Day Cover" 1½d Maori Cooking canc Stratford cds 25 JL 38 (D35.C1A, rated 6/7). Scarce lot. Most are fine. Ex Horrell. Total 22 items. \$750
- 425 C 1936 1d Kiwi (die I), single wmk, p13½ x 14, superb used on local Eketahuna mourning cover with 28 May 1936 "J" class cds. A most attractive cover - possibly the earliest known surviving today. \$500
- 426 * 1942 3/- Mt Egmont complete sheet of 60, p14¼ x 13½, coarse paper, incl R9/4 re-entry. CP L14g/y. Cat \$2075 (incl plate block). MUH. \$350

King George VI

- 427 C 1938-53 extensive specialised colln of 157 diff pictorial/printed FDCs, with many scarce or rare arranged according to Jones cat Nos (2004). Noted 1938 ½d green x 27, 1d red x 36, 1½d chocolate x 45 & 40 of other values incl 5 of 1950 1½d Arms ovpts. Jones scarcity ratings (on scale of 7) incl 28 @ 3/7; 9 @ 4/7; 29 @ 5/7 (D38.1K, 2K, 3H, 3KA, 3KCA, 3L, 3QA, 3QB, 3U, 3V, 3Z, 3Y, 3AB, D41.1AA x 2, 2A, 3B, D44.1A, 1B x 2, 1E, 1G, 1H, D52.1A x 3); 9 @ 6/7 (D38.1JB, 1D, 2N, 2R, 3G, D44.1C, 1DA, 1DB, 1I); & several unlisted. Noted 2 x 3d 1933 (26 Sept) FDCs (alone cat \$500). Almost all fine. Excellent range. List provided. Ex Horrell. \$1,750

Queen Elizabeth II Pre Decimal

- 428 M* 1953-63 seln of QEII plate blocks - 1953-4 ½d (both), 1d (both), 1½d (all 4), 2d (all 4), 3d (all 16), 4d (both), 1/9d (both), 3/-, 5/- & 10/-, 1959 3d redrawn (plate 17), 1961 2½d on 3d surcharge (plates 17 & 18 wide setting, 19 & 20 narrow setting), 1953 Coronation 2d (both), 3d, 4d (both), 8d, 1/6d, 1953 Royal Visit 3d (both), 4d & QEII Officials 2½d, 6d on 1½d, 1/- (coarse paper) & 3/-. 1953-4 issues (except shilling values) on pages, shilling values & others MUH. CP cat \$4000. Mint/MUH. \$1,150
- 429 * 1960 3d Kowhai vert strip of 8 showing progressive missing yellow (affecting leaves); 1 partial (about 2/3rds omitted), 3 complete omitted & 4 normals. CP O5a/z. Cat \$1275+. MUH (2 minor tone spots). \$500

Decimal

- 430 * 1973 7c Leather Jacket (fish) x 3 blocks of 4 - major colour shifts (all 2mm plus) of black, yellow & bistre colours respectively the latter has pre printing creases (probably related to the colour shift) & is not listed by CP, no wmk. The 2 listed - CPP9abx & w, cat \$1100. MUH. \$750
- 431 * 1974 8c John Dory missing turquoise colour, no wmk, spectacular. Also 1973 7c Fish 2mm brown colour shift to left. With normals. CP P9b var, P11bx. Cat \$600++. MUH. \$350
- 432 * 1979 10c QEII, frame (blue colour) omitted. Spectacular. CP PA10bz. Cat \$1500. MUH. \$575
- 433 * 1991 40c Brown Kiwi, imperf block of 4 on highly surfaced self-adhesive paper. MUH. Variety of CP PC19d (normally with die-cut "perforations" measuring 11¼). CP states "Imperforate varieties are known", but gives no price. \$500
- 434 * 1996 \$3 Admiral Butterfly, missing grey & green colours. Spectacular. CP PC40b(z). Cat \$1500. MUH. \$500

NEW ZEALAND - AIRMAIL

- 435 C 1931 3d, 4d, 7d Air set of 3 (with GV 2d added) on plain air FDC to GB Canc Highfield cds 9 NO 31 (4 strikes). This was actually the day before the official 1st day. Very few covers are known with this date error (all posted by A.F.M. Paterson). With "Christmas Air Mail" flight cachet by GB receipt b/s 17 Dec. Fine & rare. Ex Horrell. Normal FDC with 10 NO 31 FD date cat \$2000. \$2,000
- 436 U 1931-4 set of 4 in blocks of 4. (7d TT one stamp small back thin). Cat \$800. FU. \$350
- 437 P 1931 7d imperf plate proof top selvage block of 4 in black. \$750
- 438 / 1934 7d "Faith in Australia" x 19 MUH & 8 FU. Jury cat \$3450. \$500
- 439 C 1934 7d Trans Tasman FDC - Napier 17 JA 34 cds - on special "FAITH IN AUSTRALIA" 17 FEB 1934 Trans Tasman flight cover. Jury cat \$800. \$500
- 440 C 1934 7d "Trans-Tasman" blue, on pictorial printed "Per VH-UXX Faith in Australia" cover to GB, stamp canc Government Buildings cds 17 JA 34 (1st day of stamp). Flight cachet & Auckland relief cds 17 FE 34 also on front. B/s Sydney 17 FEB 34 8PM & G.B b/s 26 MR 34. Fine & scarce. Ex Horrell. CP cat \$750. \$450

| | | | |
|-----|---|---|-------|
| 441 | C | 1935 Air set of 3 on plain FDCs: a) to M.C. Stanley, Wellington (r/s address), canc Karori East cds 4 MY 35; b) to C.T. Harris, Auckland (typed address), canc Kingsland cds. Also "combination" FDC: 1935 2½d, 5d Pictorials, canc Papakura cds 1 MY 35 + 1935 Air set ditto 4 MY 35 + 1935 GV Jubilee set ditto 7 MY 35. All plain FDCs & fine. Ex Horrell. CP cat \$1650+. | \$900 |
|-----|---|---|-------|

NEW ZEALAND - COMMEMORATIVES

| | | | |
|-----|---|--|---------|
| 442 | / | 1906-25 seln of mint & used singles/multiples, noted: Christchurch Exbn ½d mint & 7 used, 1d x 2 m & 9 u, 3d x 6 m & 2 u; Victory x 9 (original) sets GU/FU, 1/- x 3 GU/FU & various 2d m; Dunedin Exbn mint set, also 4d m & various odds m/u, some variable cond. Ex old time dealer. Cat \$5500+. | \$1,000 |
|-----|---|--|---------|

| | | | |
|-----|---|--|---------|
| 443 | C | 1906 Christchurch Exbn matching pair of plain ½d, 1d FDCs (with same local r/s address - W.H. Phipps Black), franked a) vert pair ½d green (Te Arawa canoe); b) 1d vermilion (Maori art), canc neat "EXHIBITION / CHRISTCHURCH" cds 1 NO 06 4PM cdss "Quad" (block) between "1" & "NO". With receipt cds b/s 5.30PM same day. Very fine, Ex Horrell. Recorded by Thackery. | \$1,500 |
|-----|---|--|---------|

| | | | |
|-----|---|--|---------|
| 444 | M | 1906 1d claret Christchurch Exbn, thinned in 3 places, trimmed perfs, gum tone. Jury cat \$25,000. Mint. | \$2,000 |
|-----|---|--|---------|

| | | | |
|-----|---|---|----------|
| 445 | * | 1906 1d claret Christchurch Exbn, centered to upper right, faint gum tone spot on reverse. RPSNZ cert. Jury cat \$40,000. CP cat \$50,000. MUH. | \$15,000 |
|-----|---|---|----------|

| | | | |
|-----|---|--|-------|
| 446 | * | 1906 6d Christchurch Exbn block of 4, faint gum tone on reverse. Jury cat \$4000. MUH. | \$750 |
|-----|---|--|-------|

| | | | |
|-----|---|--|-------|
| 447 | * | 1906 Christchurch Exbn set. Cat \$1500. MUH. | \$600 |
|-----|---|--|-------|

| | | | |
|-----|---|---|-------|
| 448 | M | 1913 Auckland Exbn set. Jury cat \$800. Mint. | \$300 |
|-----|---|---|-------|

| | | | |
|-----|----|---|---------|
| 449 | M* | 1913 Auckland Exbn set in blocks of 4 (½d all MUH). Jury cat \$5600+. Mint/MUH. | \$1,500 |
|-----|----|---|---------|

| | | | |
|-----|---|--|-------|
| 450 | M | 1913 Auckland Exbn set in horiz pairs (6d 2 toned perfs). Jury cat \$1600. Mint. | \$300 |
|-----|---|--|-------|

| | | | |
|-----|---|--|-------|
| 451 | M | 1913 Auckland Exbn set. Jury cat \$800. Fine mint. | \$300 |
|-----|---|--|-------|

| | | | |
|-----|---|---|-------|
| 452 | P | 1920 1/- Victory imperf plate proof block of 4 in issued colour. CP S15PP. Cat \$300. | \$150 |
|-----|---|---|-------|

| | | | |
|-----|----|--|-------|
| 453 | M* | 1920 Victory set (incl 2d) in blocks of 4 (6d minor gum blemishes). Plus extra 1d shade. Jury cat \$1100+. Mint/MUH. | \$300 |
|-----|----|--|-------|

| | | | |
|-----|---|--|-------|
| 454 | * | 1920 Victory set (no 2d) in blocks of 4. Jury cat \$1600. MUH. | \$850 |
|-----|---|--|-------|

| | | | |
|-----|---|---|---------|
| 455 | P | 1920 Victory range of 36 colour trials, perf & imperf, all ovpt SPECIMEN. Rare selection. | \$4,000 |
|-----|---|---|---------|

| | | | |
|-----|----|--|-------|
| 456 | C/ | 1925 Dunedin Exbn seln on 4 Hagners - 2 sets in blocks of 4 MUH; 4d x 2 horiz blocks of 6 MUH; 2 covers (1 with 2 sets, 1 with 1 set); set as vert pairs FU. 3 flaws identified. Stamps cat approx \$4000. | \$950 |
|-----|----|--|-------|

| | | | |
|-----|---|--|-------|
| 457 | C | 1925 Dunedin Exbn set of 3 (extra ½d) on fine FDC canc Exbn cds 17 NO 25 (vert cover fold before stamps applied, otherwise fine). Also FDC (with set of 3) unusually fine Exbn slogan machine d/s (very scarce) NO 17 1925 small deficit in cover. Also "last day of exbn." cover (fine) canc fine Exbn cds 1 MY 26. All plain covers. Ex Horrell (3). CP cat \$1150+. | \$675 |
|-----|---|--|-------|

| | | | |
|-----|---|--|---------|
| 458 | C | 1935 Silver Jubilee printed FDCs colln of 15 diff, identified by Jones 2004 cat Nos. Noted C35.1A (rated "5" on scarcity scale of 7), 1B (6/7), 1C (4/7, x 2 shades), 1D (6/7), 1E (5/7), 1F (4/7 x 4 diff colours) & 3 diff unlisted. Noted 7 complete sets of stamps (cat \$2800 as basic FDCs). All fine. Ex Horrell. | \$1,500 |
|-----|---|--|---------|

| | | | |
|-----|---|--|-------|
| 459 | C | 1935 (7 May) Silver Jubilee plain FDCs x 2: a) to A.F.M. Paterson, Timaru, canc Highfield cds; b) with printed "Arcade Stamp Co, Royal Arcade, Timaru", reg'd, to G.W. Sides, canc Timaru cds. CP cat \$800. Also scarce forged FDC with r/s address "The City Stamp Shop, 1 St. Swithin's Lane, London E.C.4" (no country name), canc forged "GREYTOWN N.Z" cds "6 MY 35. 6" (ie: day before issue date). All fine. Ex Horrell. | \$500 |
|-----|---|--|-------|

| | | | |
|-----|---|--|-------|
| 460 | C | 1936-37 unique range of 8 diff hand-drawn or hand-painted personalised FDCs. Incl 1936 Commerce x 2 long with designs by artist Frank Kee (comic Lion & Kiwi; Britannia, Kiwi, transport; both reg'd & with congress cds). Also 1937 Coronation x 6, incl 4 diff by Kee (2 are long regd covers showing royal coach, Beefeater guard); 4 others incl 1 posted Rarotonga (with Cook Isl ovpt set). Of these, 2 by Kee are toned (1 with 1cm tear). The others are fine. Ex Horrell. | \$750 |
|-----|---|--|-------|

| | | | |
|-----|---|---|-------|
| 461 | C | 1936 (27 April) ANZAC printed FDCs, colln of 10 diff, identified by Jones 2004 cat Nos. Noted canc Lower Hutt cds, each stamp signed "S. Catchpole 1936 R.N.Z.A." (Brigadier Catchpole, who was the model for the stamp design); rare C36.1c (rated 7/7); unlisted foolscap size as 1B; ditto as 1A but with cutout cachet & blocks of 4, regd; & unlisted textual design. Also C36.1AB (stained, not FD cancel). Generally fine. Ex Horrell. | \$500 |
|-----|---|---|-------|

| | | | |
|-----|----|---|---------|
| 462 | C | 1936 Commerce extensive specialised colln of 69 diff pictorial/printed FDCs incl many scarce or rare, arranged according to Jones cat Nos (2004). Noted 16 rated "4" (on scarcity scale of 7), 16 @ 5/7, 6 @ 6/7 (C36.2CA, 2J, 2M, 2NC, 2S, 2AB), 3 @ 7/7 (1 AW, 1 AY, 1 BG) & 5 unlisted. Total 24 covers with complete sets (these alone cat \$2800 as basic FDC). Almost all fine. List provided. Outstanding range. Ex Horrell. | \$1,250 |
| 463 | C | 1936-46 Pictorial FDCs x 7 diff (all long) with finely painted original scenes by artist Frank Kee of Wellington. Most addressed to his children (1 to Canada). Incl 1936 ANZAC (statue), 1940 Centennial x 2 (Abel Tasman, Tasman's ship & map), 1946 Peace (4 diff rural scenes, added to pictorial NZPO map FDCs (Jones C46.1PA(b)). Possibly all unique. Good to mostly fine cond. Not mentioned by Jones (2004). Ex Horrell. | \$750 |
| 464 | C | 1937 GVI Coronation extensive specialised colln of 141 diff pictorial/printed FDCs incl many scarce or rare, arranged according to Jones cat Nos (2004). Noted 44 rated "3" (on scarcity scale of 7), 21 @ 4/7, 14 @ 5/7, 13 @ 6/7, (C37.1D, 1K, 1Q, 1AH, 1AM, 1AN, 1AO, 1AP, 1AQ, 1AX, 1AZ, 1BA, 1BB), 3 @ 7/7 (1AW, 1AY, 1BG) & approx 17 unlisted. Noted 40 covers with complete sets. Almost all fine. List provided. Exceptional range. Ex Horrell. | \$1,600 |
| 465 | M* | 1940 Centennial & 1946 Peace near complete plate/imprint blocks interestingly presented on pages. Centennials incl 28 of 30 1d blocks, all 6 1½d blocks, 41 of 45 2d blocks (missing A7 & A8), all 4 3d blocks, 4d-8d blocks, 9d block A1 and 1/- strip of 4 with plate No. Peace incl all 1d, 1½d block IB, 7 of 8 2d and both 1/- plate blocks & all imprint blocks for other values. CP cat \$5700. Mint/MUH. | \$750 |
| 466 | C | 1940 Centennial extensive specialised colln of 97 diff pictorial/printed FDCs, with many scarce or rare, arranged according to Jones cat Nos (2004). Noted 18 rated "3" (on scarcity scale of 7), 27 @ 4/7, 3 @ 5/7 (C40.A1B, 1C, C44.1D), 3 @ 6/7 (C40.1JE x 2, 1E), 1 @ 7/7 (C44.1F) & 7 unlisted. Covers x 5 2 JA 40 with full sets (less 8d, 10d), 8d x 10 8 MR 40, 10d x 21 1 MY 44 (these alone cat \$2800 as basic FDCs). Almost all fine. List provided. Excellent range. Ex Horrell. | \$1,750 |
| 467 | C | 1940 Centennial group of 5 Pict FDCs (all to the same address - Pierr family) with diff hand-drawn black ink sketches by the same (unknown, very competent) artist. Scenes of transport, parliament, NZ scenery, Maori carving. Franked single Centennial 1½d, 4d, 6d, 9d, 1/- stamps, canc Lyttleton cds 2 JA 40. Not mentioned by Jones (2004). Very fine. Ex Horrell. | \$500 |
| 468 | C | 1946 Peace extensive specialised colln of 77 diff pictorial/printed FDCs in album, with numerous scarce or rare, arranged according to Jones cat Nos (2004). Noted 17 rated "3" (on scarcity scale of 7), 6 @ 4/7, 6 @ 5/7 (C46.10 x 2, 1R x 2, 1AFA, 1AFB), 3 @ 6/7 (1Y, 1AE, 1AA), 2 @ 7/7 (1Z, AIB), & 8 unlisted. Almost all fine. List provided. Excellent range. Ex Horrell. | \$600 |
| 469 | C | 1947-50 issues extensive specialised colln of 85 diff pictorial/printed FDCs (mostly 1948 Otago, 1950 Canterbury), with several scarce or rare, arranged according to Jones cat Nos (2004). Mostly rated "1" to "3" (on scarcity scale of 7) but incl several scarcer items such as (rated 4/7) C48.1J, AIB, C50.1BB, 1U, 1N x 2, (rated 5/7) C48.AID, (rated 6/7) C48.AIA, O47.1C (Govt Life) & 1 unlisted 1948 Otago. Also rare unused (fine) 1949 Royal Visit pictorial cover (planned issue cancelled), & modified example of same used for 1963 Royal Visit special cancel. Almost all fine. Very good range. List provided. Ex Horrell. Total 87 items. | \$500 |
| 470 | C | 1953-4 early QEII issues (incl defins) extensive specialised colln of 102 diff pictorial/printed FDCs in album, incl some scarce or rare, arranged according to Jones cat Nos (2004). Issues incl Coronation (45), defins (19), Official (8), Royal Visit (26). Noted 13 rated "3" (on scarcity scale of 7), 9 @ 4/7, 9 @ 5/7, & 6 unlisted. Almost all fine. Very good range. List provided. Ex Horrell. | \$600 |
| 471 | * | 1962, 1965 Christmas double perf blocks of 4. CP SC2a(y), SC6a(w). Cat \$1250. MUH. | \$375 |
| 472 | * | 1963 3d Telegraph Centenary, partial missing green colour on lower 8 stamps of lower RH corner, vertical block of 20 (2 x 10). Vertical perf seps on top 4 rows (ordinary stamps). Incl Harrison & Sons Ltd London inscription in lower selvage. CP S88a/v. Cat \$2400+. | \$750 |
| 473 | U | 1972 23c Scenic Lake yellow-olive frame commercially used. Unpriced by CP used, with normal 18c & 23c for comparison. RPSNZ cert (2019). CP SS8a(2). | \$425 |
| 474 | * | 1973 3c Thames double yellow printing (incl lower L/H part sheet markings), 8c Olympic Rowers double gold printing. CP S163az, S167az. Cat \$500. MUH. | \$250 |
| 475 | * | 1973 3c Thames double print yellow colour, 1975 5c pale figures, 1979 23c Akaroa red colour offset, 1986 30c Orchestra imperf horiz pair. CP S163a(z), S195a(z), S531a(z), S341a. Cat \$1550. MUH. | \$450 |
| 476 | * | 1975 10c Christmas block of 4 showing yellow offset on back, 1982 18c yellow-blue offset on back. CP SC16c(z), SC23a(z). MUH. | \$450 |
| 477 | * | 1977 10c AA missing grey (with normal). CP S218a. Cat \$1000. MUH. | \$300 |
| 478 | * | 1977 QEII Silver Jubilee imperf & missing silver colour m/s error (with normal), tiny corner crease. CP SM220v-4v. Cat \$8000. MUH. | \$5,000 |

| | | | |
|-----|---|--|---------|
| 479 | / | 1977 QEII Silver Jubilee extensive study - much of colln written up as on pages with much extra loose material. Incl colour photos of proofs etc produced by Harrisons; minor & not so minor printing flaws, smudges or blade flaws etc; silver offset sheet (& partial); misguillotined; colour shifts; USSCO perfins; covers etc etc. Total 80+ sheetlets, several covers & 16 photos. | \$1,500 |
| 480 | * | 1990 40c Te Maori missing chalky blue colour (value) (with normal). CP SH31a. Cat \$850. MUH. | \$300 |
| 481 | * | 1998 \$1 Mt Maunganui with 12½mm colour shift with normal. CP S5128a(z). Cat \$1000. MUH. | \$300 |
| 482 | * | 2000 40c, \$1.10 Olympics, each with perf shift 5mm downwards error that "NEW ZEALAND" & value now at bottom, with top selvages (incl "NEW ZEALAND" & values plus part barcode markings). With normals. Noted but not listed by CP. MUH. | \$600 |
| 483 | * | 2000 40c, \$1.10, \$1.20 Olympics, each with perf shift 5mm downwards error so that "NEW ZEALAND" & value are now at bottom, with RH selvages (with normals). Noted but not listed by CP. MUH. | \$900 |
| 484 | * | 2003 40c Christmas missing fern (5th stamp) in coil strip of 8 with leader. CP SC45f. Cat \$1000. MUH. | \$300 |
| 485 | * | 2003 40c Christmas missing fern (6th stamp) in coil strip of 8 with leader. CP SC45f. Cat \$1000. MUH. | \$300 |
| 486 | * | 2004 90c Olympics misplaced laminate, 2005 \$1.50 Rooster mis-perfed (single stamp plus gutter). CP S916a(z), S927a(z). Cat \$800. MUH. | \$300 |
| 487 | * | 2005 45c Cafe Culture, die cut invtd. CP SH116a(z). Cat \$650. MUH. | \$275 |
| 488 | * | 2007 Classic sayings group of 5, all missing thermographic ink so that saying is visible - "She'll be right", "Shark and taties", "Laughing gear", "dreaded lurgi" & "rark up". Only part of 1 sheet has been discovered and this is 5 of the 7 known. CP S1033az, S1044z, S1046az, S1049az, S1050az. Unpriced. MUH (all with normal). | \$1,750 |

NEW ZEALAND - HEALTH

| | | | |
|-----|----|--|---------|
| 489 | * | 1929-34 complete. Jury cat \$1500. MUH. | \$650 |
| 490 | / | 1929-45 mint/MUH/used colln of singles/multiples. Noted: 1929 block of 4 mint & 7 used; 1930 block of 4 x 2 m & 4 VFU (1st day cancels) on 4 diff pieces; 1931 1d + 1d block of 4 mint, also set mint & used; 1932 block of 4 mint also 2 m & 2 u; 1933-4 & 1939 absent. On 24 pages & 2 stock cards. Cat \$3500. | \$1,000 |
| 491 | / | 1929-67 mint & used accum in s/b. Noted FU: 1929 x 2, 1930, Red Boy (packet cancel), Blue Boy x 2, 1932, 1933, 1934 x 5; mint: 1929, Red & Blue Boys, 1932 & 1933 (MUH). Over 500 stamps incl some blocks of earlier issues. | \$800 |
| 492 | M* | 1929-77 complete (mint & odd used) incl many blocks & m/ss. Incl variants: 1933 blk 9 showing R2/1, 3/3 flaws (CP T5au); 1946 2d blurred centre (CP T18bz) & other variants; 1962 2½d print on double paper MUH (T34ax); 1963 3d finger flaw + corrected (T35bz,x); 1977 7c major perf shift MUH (T49aw); 1979 10c double green etc. Variants alone cat \$3300+. CP cat c\$4400. | \$1,050 |
| 493 | * | 1931 Blue Boy. Jury cat \$550. MUH. | \$230 |
| 494 | P | 1931 Red Boy imperf plate proof block of 4 in black with top selvedge. CP T3aPP. Cat \$1000. | \$750 |
| 495 | M | 1931 Red & Blue Boys in blocks of 4. Cat \$1800. Mint. | \$1,000 |
| 496 | U | 1932-4 Hygeia, Pathway, Crusader blocks of 4. Cat \$440. FU. | \$250 |
| 497 | * | 1950 1d + ½d Princess & Prince invtd wmk, complete (folded) sheet of 120. Minor faults affect several stamps. CP T22ay. Cat \$1800. MUH. | \$300 |
| 498 | * | 1977 Children in the Wood m/s x 2 - misguillotined sheet 12mm to right so that LH selvedge decorations appear at right; orange & light blue colours approx 2mm to right & 1mm down. MUH. Both unlisted CP. | \$1,000 |
| 499 | * | 1978 Health stamps & Heart Foundation m/s with doubling of red colour (with normal). RPSNZ cert (2010). CP TM50w. Cat unpriced. MUH. | \$1,000 |

NEW ZEALAND - OFFICIALS

| | | | |
|-----|---|---|---------|
| 500 | U | 1894 ½d Newspaper O.P.S.O. Wellington 3 OC 94 "F" class cancel. CP \$2500. | \$1,000 |
| 501 | U | 1894 ½d Newspaper O.P.S.O. Wellington ? OC 94 "A" class cancel. CP \$2500. | \$1,000 |
| 502 | M | 1907-54 mint colln on L/H hingeless leaves. Noted: 1907 1/-, 5/- Mt Cook; 1915 8d; 1927 2/- Admiral; 1933 Arms vert ovpt; also 1903 Express Delivery x 4 mint; a few Life Ins & Postage Dues. | \$1,000 |

REMEMBER WE TAKE ALL MAJOR CREDIT CARDS

| | | | |
|-----|----|--|---------|
| 503 | / | 1907 Pictorials seln of 60 mint & used on 2 s/b pages. Incl ½d (MUH, 8 mint, 12 used), 2d (3 MUH incl horiz pair, 6 m, 11 u), 3d (m, 6 u), 6d (MUH, 2 m, 5 u), 6d reduced (2 m, 6 u), 1/- (MUH, 2 m, 3 u), 2/- (5 m, 4 u), 5/- (2 u). Some minor faults but 5/- both FU. | \$1,000 |
| 504 | | 1907 ½d (vert pair), 2d, 6d (original design) Pictorials "later" set of 3. Jury cat \$1850. MUH. | \$850 |
| 505 | * | 1907 1d Universal redrawn top L/H corner block of 4 with sheet number D24083. Jury cat \$1400+. MUH (hinging on selvedge). | \$450 |
| 506 | * | 1907 3d, 1/-, 2/-, 5/- Pictorials "original" set of 4. Jury cat \$3250. MUH. | \$1,750 |
| 507 | U | 1907 Pictorials "set" of 8: ½d, 2d, 3d, 6d (original & reduced), 1/-, 2/- & 5/-. Jury cat \$1011. FU. | \$400 |
| 508 | M | 1907 Pictorials "set" of 8: ½d, 2d, 3d, 6d (original & reduced), 1/-, 2/- & 5/-. Jury cat \$2600. Mint. | \$1,250 |
| 509 | * | 1907-51 range in pairs & blocks of 4, nice lot. Jury cat \$5050. MUH. | \$1,800 |
| 510 | * | 1907-8 Pictorials all 10 issues (incl 1d Universal & 1d Universal redrawn). Jury cat about \$7000. MUH. | \$2,800 |
| 511 | M* | 1908 1d Universal redrawn block of 4, o/c. SG O70. Cat £280. 2 Mint/2 MUH. | \$150 |
| 512 | U | 1908 £1 QVLT block of 4, unsurfaced paper, fine Wellington roller cancels. CP Z)15f. Cat \$6000. FU. | \$1,150 |
| 513 | * | 1909 6d Kiwi reduced with top selvedge, p14 x 15. CP EO15c. Cat \$1800. MUH. | \$1,100 |
| 514 | / | 1910-16 EVII seln of 98 (30 MUH, 24 mint, 44 used) on 2 s/b pages. Noted ½d with offset on back MUH (toned) & R3/18 "under NY" flaw GU/FU, 3d p14 x 13½ mint & 4 GU/FU; 6d p14 x 14½ MUH x 5; & 8d vert 2 perf pair mint. Identified by CP Nos. CP cat \$6500+. | \$750 |
| 515 | * | 1910 1/- EVII block of 4. CP HO6b. Cat \$2000. MUH. | \$575 |
| 516 | M | 1913 2/-, 5/-, £1 QVLT (minor adhesion on reverse of £1). Jury cat \$2400. Mint. | \$600 |
| 517 | * | 1913 2/-, 5/-, £1 QVLT simplified set of 3. Jury cat \$7100. MUH. | \$3,500 |
| 518 | * | 1913 5/- QVLT block of 4. Jury cat \$2400. MUH. | \$850 |
| 519 | U | 1915-6 3d GV recess blocks of 4 (3) - p14 x 13¼, p14 x 14¼, p14 (line). CP KO4a-c. Cat \$1000+. FU. | \$300 |
| 520 | U | 1915 3d GV recess double "OFFICIAL" ovpt, p14 x 13¼. CP KO4az. Cat \$3000. FU. RPSNZ cert (2016). | \$950 |
| 521 | M* | 1915 3d GV recess chocolate-brown block of 4, invtd wmks, p14 x 14¼, lower pair unhinged. CP KO4by. Cat approx \$500. Mint/MUH. | \$190 |
| 522 | M | 1915-6 3d, 8d EVII 2 perf pairs. CP HO3e, HO7d. Cat \$1200. Mint. | \$500 |
| 523 | M | 1915 3d EVII 2 perf pair. CP HO3e. Cat \$1000. VLH mint. | \$400 |
| 524 | * | 1915-6 3d GV deep chocolate, 6d GV carmine-pink 2 perf blocks of 4. CP KO4c1, KO8c4. Cat \$1250. MUH. | \$375 |
| 525 | * | 1915 3d GV recess chocolate-brown block of 4, invtd wmks, p14 x 14¼. CP KO4by. Cat \$700. MUH. | \$300 |
| 526 | * | 1915-26 GV recess set of 6, surface set of 6 (incl 1½d local print) & 1d, 2/- Admirals. Jury cat \$1750. MUH. | \$850 |
| 527 | U | 1916 3d GV recess block of 4, p14 (line), sideways wmk. CP KO4d. Cat \$1000. FU. | \$300 |
| 528 | / | 1916 8d EVII 2 perf pairs (x 2). CP HO7d. Cat \$950. MUH & GU/FU, later with RPSL cert (2000). | \$400 |
| 529 | M | 1922 8d GV plate block of 4 - No. 39. Horiz fold at top of block. Mint (stamps MUH). CP KO10d. Cat \$3500 (MUH). | \$1,250 |
| 530 | * | 1933-8 5/- Arms vertical & horiz ovpts. Jury cat \$1250. MUH. | \$750 |
| 531 | * | 1935 Pictorials range: SG O115 (2), O120 (3), O122 (6), O123 (3), O124a (2), O125 (7), O127 (5), O128, O128a (9), O129 (4), O130 (3), O132c. SG cat £1784. MUH. | \$1,250 |
| 532 | C | 1938-41 ½d-1½d GVI FDCs x 9 diff (4 printed O.H.M.S. covers, 5 Philatelic pictorial cacheted covers with official stamp adjacent to matching regular stamp). Noted ½d green 1 MR 38 x 2 diff; 1d red 1 JL 38 x 3 diff; 1½d chocolate 26 JL 38 x 3 diff incl nice pictorial (flight map) airmail to USA; 1d green 1 JL 41. Scarce lot. All fine. CP cat \$1800. Ex Horrell. | \$1,000 |
| 533 | * | 1938 1½d GVI chocolate block of 4. Jury cat \$600. MUH. | \$200 |
| 534 | C | 1938-46 "Official" FDCs x 3 (2 rare, 1 scarce): a) plain cover (typed address) with official 3d Wahine & GVI ½d green (faint perf tone), canc Tokomaru Bay cds 1 MR 38; b) 2½d Mt Cook (CP LO5c) canc Palmerston North cds 26 JL 38 on OHMS cover; c) ½d GVI chestnut block of 4 on OHMS cover canc Waipukurau cds 1 JE 46. All fine. Ex Horrell. | \$1,250 |

SEE THIS CATALOGUE ONLINE AT WWW.MOWBRAYCOLLECTABLES.COM

| | | | |
|-----|---|--|---------|
| 535 | C | 1940 ½d-1/- Centennial FDC original set of 10 canc Auckland cds 2 JA 40 on plain cover (long), to local address. Also O.H.M.S. printed FDC (long), reg'd to Australia, franked 8d Centennial "Official" canc Centennial Exhibition cds 8 MR 40. Good cond. Scarce FDCs. CP cat \$2900. Ex Horrell. | \$1,500 |
| 536 | * | 1940 Centennial set of 8 joined "ff" pairs, (2½d strip of 3), well displayed. SG O141a-9a. Cat £545. MUH. | \$500 |
| 537 | C | 1947 2d-2/- GVI (new set of 7) plain FDC (long) canc Government Buildings cds 1 MY 47. Fine. A rare FDC. Cat \$1250. Ex Horrell. | \$750 |

NEW ZEALAND - LIFE INSURANCE

| | | | |
|-----|----|---|---------|
| 538 | M | 1891 VR set, 3d 2 short perfs, 1/- short perf (6d gum adhesions). Cat \$4400. HH mint. | \$1,250 |
| 539 | U | 1891 x 3 VR sets GU/FU (a few light stains on some in 1 set), also 3d x 8 used incl a strip of 3. Ex old time dealer. Cat \$3200. | \$500 |
| 540 | M | 1891 VR set of 6, 1/- o/c. Jury cat \$4400. Mint. | \$1,500 |
| 541 | M* | 1902 1d blue VR block of 9, sideways invtd wmk, centre row MUH, others mint. A few separated perfs in 1 row, otherwise very fresh, & an attractive rare multiple. 2 stamps creased. CP X2h(1)(b). Cat \$1950. | \$750 |

| | | | |
|-----|---|--|---------|
| 542 | * | 1905 1d blue, 2d chestnut no VR. Jury cat \$11,750. MUH. | \$5,000 |
| 543 | U | 1905 2d chestnut no VR x 12 VFU (small stains on 5) incl 1 vert & 1 horiz pair both FU. Cat \$4200. | \$1,000 |
| 544 | U | 1906 1d blue no VR x 38 (incl 3 pairs all affected by toning). Jury cat \$1900. GU/FU. | \$375 |
| 545 | | 1967 (2½c) on 3d Eddystone major error: virtually no value printed (due to paper fold) on GLIO window envelope. "No value / on it" m/s marking. The denomination can be seen on the rear of the stamp when viewed from the back. With explanation article (published in "Captain Coqk"). CP X23az (for total omitted value). Cat \$8000. | \$2,000 |

NEW ZEALAND - POSTAL FISCALS

| | | | |
|-----|---|---|-------|
| 546 | U | 1882 1d Stamp Duty blue. The earliest known postally used example, bearing superb WELLINGTON / 30 JA 82 "A" class cancel. Distributions made during the emergency period in early 1882 would have been first made to Wellington, from stores kept there. [Also incl an explanatory article re this stamp, emergency period & other early use dates, published "Captain Coqk", June 2022]. | \$500 |
|-----|---|---|-------|

QV Long Types

| | | | |
|-----|---|--|---------|
| 547 | * | 1882-1925 3/- mauve. Jury cat \$900. MUH. | \$400 |
| 548 | * | 1882-1925 4/- orange-red. Jury cat \$900. MUH. | \$400 |
| 549 | * | 1882-1925 5/- green. Jury cat \$1200. MUH. | \$500 |
| 550 | * | 1882-1925 7/- blue. Jury cat \$2500. MUH. | \$1,000 |
| 551 | * | 1882-1925 8/- blue, very minor patch gum discolouration. Jury \$3000. MUH. | \$850 |
| 552 | * | 1882-1925 9/- orange. Jury cat \$4000. MUH. | \$1,500 |
| 553 | * | 1882-1925 10/- maroon. Jury cat \$3000. MUH. | \$1,000 |

| | | | |
|-----|---|---|---------|
| 554 | M | 1903 set to £2 excl 7/6d, 15/- mint (9/- oxidised & 7/- a bit oxidised). Jury cat \$6475 to £1. Mint. | \$3,000 |
|-----|---|---|---------|

| | | | |
|-----|---|--|-------|
| 555 | * | 1906 6/- rose, unsurfaced paper, p14, sideways wmk. CP Z7g. Cat \$2000. MUH. | \$850 |
|-----|---|--|-------|

| | | | |
|-----|---|--|---------|
| 556 | * | 1906 7/6d bronze-grey, unsurfaced paper, p14, sideways wmk. CP Z9d. Cat \$7500. MUH. | \$4,000 |
|-----|---|--|---------|

| | | | |
|-----|---|---|----------|
| 557 | M | 1925 12/6d Cowan paper. A very rare stamp. CP Z13c. Cat \$50,000. Mint. | \$30,000 |
|-----|---|---|----------|

Arms

| | | | |
|-----|----|---|---------|
| 558 | M | 1931-56 1/3d - £1, 3/6d on 3/6d to 22/- on 22/-, incl 1/3d lemon. Mint. | \$1,500 |
| 559 | M* | 1931-56 1/3d-£5 complete to £1 incl 1/3d lemon & 1/3d yellow-blue (except no 12/6d), then £2, £3, £4, £5. 8/- minor gum tone spot; £2 & £5 darkened gum. Jury cat approx \$4000. MUH (£1 VLH mint). | \$1,500 |
| 560 | * | 1931-56 12/6. Jury cat \$800. MUH. | \$350 |
| 561 | M | 1931-56 12/6d, 30/-, £2, £2.10, £3. Jury cat \$2000. VLH mint. | \$700 |

| | | | |
|-----|---|--|----------|
| 562 | * | 1931 35/-, Cowan paper. CP Z45a. Cat \$16,000. MUH. | \$10,000 |
| 563 | M | 1935 £4 light blue, Cowan. CP Z50a. Cat \$575. Mint. | \$240 |
| 564 | * | 1935 £4.10 deep grey, Cowan. CP Z51a. Cat \$7000. MUH. | \$4,000 |
| 565 | M | 1935 £4.10 deep grey, Cowan, fine. CP Z51a. Cat \$4000. Mint. | \$1,150 |
| 566 | * | 1935 £4.10 deep grey, Cowan paper. CP Z51a. Cat \$7000. MUH. | \$3,000 |
| 567 | * | 1939 3/6d to 35/- surcharges (5), no 3/6d sans serif lettering. Jury cat \$3000+. MUH. | \$1,250 |
| 568 | * | 1939 35/- on 35/- orange-yellow, Cowan. CP Z57a. Cat \$1525. MUH. | \$750 |
| 569 | M | 1939 35/- on 35/-. Jury cat \$1250. Mint. | \$375 |
| 570 | * | 1940 7/- block of 4, WT paper, mult upright wmk. SG F197. Cat £240. MUH. | \$325 |
| 571 | M | 1940 22/- on 22/- scarlet, WT single wmk. CP Z56a. Cat \$675. LH mint. | \$350 |
| 572 | M | 1940-58 set of 19 to £5 (excl 8/-) plus 2 sets of 3/6d -22/- ovpts. SG F191-216. Cat £76,000. Mint. | \$5,000 |
| 573 | * | 1942 11/- on 11/- yellow, WT mult upright wmk. CP Z55b. Cat \$375. MUH. | \$190 |
| 574 | U | 1945 22/- on 22/- scarlet, WT mult upright wmk. CP Z56b. Cat \$425. FU. | \$190 |
| 575 | * | 1946-53 25/-, 30/-, £2, £2.10, £3, £3.10, £4 & £5, WT multiple wmk paper, all invtd wmk except £2. £4 minor oxidation. Sorani cert (1993) (cert doesn't mention oxidation & states SG F204/11). SG F204w-5w, F206-7, 208w-9w, 210, 211w. Cat £7300. MUH. | \$3,300 |
| 576 | * | 1946 25/- pale blue, WT mult upright wmk. CP Z43b. Cat \$1500. MUH. | \$750 |
| 577 | * | 1946 30/- brown, WT mult upright wmk. CP Z44c. Cat \$1000. MUH. | \$400 |
| 578 | * | 1951 £2.10 red, WT mult upright wmk. CP 47b. Cat \$1250. MUH. | \$600 |
| 579 | * | 1952 £3.10 rose, WT mult invt wmk. CP Z49c. Cat \$8000. MUH. | \$3,000 |
| 580 | * | 1952 £4 light blue, WT mult invt wmk, small paper inclusion. CP Z50b. Cat \$600. MUH. | \$230 |

NEW ZEALAND - BOOKLETS

| | | | |
|-----|----|---|-------|
| 581 | M* | 1902 1d Universal panes (x 2) upper & lower selvages, imperf 3 sides. CP W2b(x). C\$1300. Mint/MUH. | \$275 |
| 582 | * | 1905 1d Universal upper selvedge pane, perfed on all 4 sides. CP W2c(y). Cat \$650. Fine, MUH. | \$180 |
| 583 | M* | 1907 1d Universal official panes x 3 diff: a) top selvedge fine MUH with interleaf; b) lower selvedge mint & c) partial double (blind) perfs, top selvedge mint. CP WO2a(z). Cat \$900. | \$230 |
| 584 | U | 1907 1d Universal official x 16 horiz pairs, all except one with cds. CP WO2a(x). Cat \$960. Used. | \$275 |
| 585 | M* | 1907 1d Universal official pane MUH; also 1912 1d Universal, upper binding selvedge with continuous bar & side bars mint; 1927 1d Universal, Cowan reversed paper, upper binding selvedge KODAK / KODAK adverts mint/MUH & 1938 GVI 1d, upright wmk, unnumbered pane MUH. Odd one odd tone. CP cat \$1000+. Mint/MUH. | \$140 |
| 586 | M | 1912 ½d EVII panes: a) upper selvedge & pair wide selvedge bars in & b) lower selvedge continuous selvedge bar, tone spot. CP cat \$700. Mint. | \$140 |
| 587 | * | 1938 ½d, 1d & 1½d GVI panes, each with upright & invtd wmk. Also exploded 2/- booklet, 1d red panes, x 3 upright wmk & 1 invt wmk, each with plate 5 on binding selvedge (10 panes) odd one with odd tone spot. CP W6a(Z,Y,X,W), W6b(Z,Y) & W6c(Z,Y). Cat \$2250. MUH. | \$425 |
| 588 | M* | 1938-50s 2/3d GVI incomplete but incl 1½d pane (complete) invtd wmk, 1½d upright & invtd wmk panes mint/MUH on separate page; misc exploded panes etc; 4/- x 2; 4/3d & 4/6d x QEII booklets & misc Pacific odds on 2 stock pages. | \$170 |
| 589 | * | 1938 2/3d GVI (3 panes 1½d chocolate), all panes invtd wmk. Cat \$900 as booklet but \$1425 as individual panes. CP W6c. | \$450 |
| 590 | * | 1954-59 1d & 3d QEII panes (24) - various papers & wmk, with exploded booklets & interleaves of 1st, 3rd & 5th issues. CP W7a etc. Cat \$1000+. MUH. | \$300 |
| 591 | * | 1954-59 4/- QEII, a comprehensive colln incl upright invtd & mixed wmk panes of all 5 issues (24v), with different advert interleaves etc. CP W7a, W7d. Cat \$1200. MUH. | \$350 |

| | | | |
|-----|---|---|---------|
| 592 | * | 1954-2018 extensive colln of 200 diff MUH. Almost complete series issued to end 2018. Incl the 4 diff 1954-9 QEII booklet, the 6 diff 1960, 1967, 1970 Picts bklt, 1998 Scenic defins with "Marlborough Sounds" omitted, and 23 premium bklt incl the 5 2014-18 WWI NZ's Story. Also incl 5 diff alternative mail bklt. CP \$6100. MUH. | \$1,250 |
| 593 | * | 1967 50c: mixed (XA/XB/plain selvedge combinations) panes: 1967 (1st issue - deep red cover) x 2; 1969 (2nd issue - pale red cover) x 8 (10 items). CP W9a(c). Cat \$2250. MUH. | \$650 |
| 594 | * | 1971 75c booklets & panes - a very comprehensive colln with exploded & complete booklets, replated panes of 25 (& descriptions) in complete booklets & varieties etc (85 booklets & 38 panes). CP cat \$3000+. MUH. | \$875 |
| 595 | / | 1977-2010 Swedish style folded booklets, numerous incl perf/self adhesive & Kiwi reprint variations, minor dupn in 3 large L/H booklet albums & dustboxes (662 booklets). Also incl several NZ Post Hangsell packs & odd m/s. Mostly MUH - odd booklet CTO (face value \$5250+). MUH/used. | \$2,900 |
| 596 | * | 1998 \$4.00 Town Icons, completely imperf. CP W69a(z). Cat \$2000. MUH. | \$575 |
| 597 | * | 2001 \$4 Scenic, all stamp printing omitted. CP W66cYa. Cat \$800. MUH. | \$380 |
| 598 | * | 2002 \$9.00 Curio Bay, Catlins major error: completely imperf MUH. Also incl 1998 \$4.00 Scenic (Rugby Super 12 advert) error: printed on backing paper, both MUH. CP W66b(Ya) & W88a(Y). Cat \$4100. | \$750 |
| 599 | * | 2013 \$24 Christmas Beach Cricket self adhesive imperf error, diecuts omitted (1 pane detached). CP W142a var. MUH. | \$750 |

NEW ZEALAND - OTHER

| | | | |
|-----|---|--|---------|
| 600 | / | 2005-2017 CALs extensive colln in small s/b & in packs. Complete MUH series of issues from 2005-17 incl booklets (except no 2007 issues & missing 5 singles from 2009). Also incl small seln of used incl 2 diff ANZ Bank 2004 issues on pieces. CP cat \$1200. Mint/MUH/Used. | \$400 |
| 601 | C | 1939 6d Express Delivery (motorcar) plain FDC (GVI 1d stationery envelope with added 6d "EXPRESS" label), canc Wanganui Registered cds 16 AU 39, to local address. Fine. Also single 6d Express on cacheted (with r/s) FDC (some tone), printed address label "Beaver Stamp Service Blenheim", canc Blenheim cds 16 AU 39, signed by designer J Berry. Unlisted by Jones (2004). Ex Horrell. CP cat \$1100+. | \$600 |
| 602 | C | 1939 6d Express Delivery Fernleaves vermilion & mauve, final printing, p14 x 15, on Wiggins Teape chalky paper, CP U1e (with GVI 1d red & "EXPRESS" label), FU canc Waipukurau cds 15 AU 39 on cacheted (typed) "Last Day of Issue" cover (motorcar design issued next day). Typed local address. CP cat \$2500 on cover & states "of extreme rarity" on cover between April & August 1939. Very fine. Ex Horrell. | \$1,500 |

NEW ZEALAND - REVENUES

QV Long Types

| | | | |
|-----|---|--|---------|
| 603 | R | 1867 Die I x 35 perf values from 4d to £45, each handstamped specimen, mostly good to fine. Scarce group. | \$1,650 |
| 604 | R | 1867? 1% Ad Valorem imperf 4 good margins, impressed NZ monogram, neat pen cancel & fine Westland 2.9.75 cdss. Kiwi R1a. Cat \$675. | \$350 |
| 605 | R | c1867-1925 accum on Hagners, on stock cards & glassine etc. Incl 1867 x 30+ (mix perf & imperf) various values to £5 incl several odd denominations; 1882 series x 30+ various to £10, note: 2/6d brown counterpart mint (minor faults). | \$1,250 |
| 606 | M | 1871 6d red-brown & blue, die I, p10, large NZ wmk, very scarce. Kiwi R266B. fine fresh mint. | \$1,500 |
| 607 | | LOT WITHDRAWN. | |

NEW ZEALAND - POSTAGE DUES

| | | | |
|-----|----|---|---------|
| 608 | M* | 1899 4d lower R/H corner sheet No (312080) horiz block of 10, 2 stamps hinged. Jury cat \$1020. Mint/MUH. | \$275 |
| 609 | * | 1899 set of 11 (2d & 6d each several toned perfs). Cat \$2700. MUH. | \$1,250 |

- 610 M* 1906 1d Cowan, p11, upper left part pane of 60 with CP unlisted variety, letter wmks (NEW Z at top and POSTAGE at side affecting 12 stamps). Also incl R8/1 damaged frame variety (top left). 59 stamps MUH, 1 mounted & about 10 have light gum discolouration. Cat \$900+ as normals. \$500
- 611 C 1939 ½d-3d Postage Due (3rd design), plain FDC (typed local address), canc Wanganui Registered cds 16 AP 39, with contrived addition of 6d & ½d "TO PAY" H/S. Fine. Also plain FDC (2 vert folds not through stamps) with 6d Express Delivery (motorcar) canc Timaru cds 16 AU 39 (1st day) & GVI 1d red, with added ½d-3d P Due set canc same date. Also cacheted FDC canc Porangahou cds 16 AU 39 with "TO PAY 2d" h/s, strip of 4 x ½d P Due added & canc Waipukurau cds 16 AU 39. Fine. Cat \$1250+. Ex Horrell (3). \$700
- 612 C 1939 WWII stampless OHMS printed "Returned Letter" cover ex Dead Letter Office, GPO, Wellington, addressed to Auckland (& readdressed). With censor resealing strip tied by censor h/s. Posted Wellington 2 Nov & charged postage due (reason unclear), with "TO PAY" circular h/s (black) & m/s "4/-" in centre (very high charge). On back, FU block of 16 (4 x 4) x 3d orange-brown Postage Dues (SG D44), canc 5 strikes of "Upper Symonds St. Postmen's Branch" cds 3 NO 39. Addressee's surname (Endres) possibly German, so this cover may have contained an item returned undeliverable from enemy territory. Fine Exhibition item in good cond. Stamps cat SG approx £525 on cover. \$400

POLAR

- 613 Antarctica series of 10 large (20 x 15cm) photographs (numbered between "S.22" & "S.43") showing scenes from a 1930s Antarctic expedition on the new research ship "Discovery II". Scenes show the ship in ice, Tiger Moth aircraft on skis, meeting with Ellsworth at "Little America" (accessible only through a hole in the snow). RAAF pilots seated in their place, expedition group & plane on the ship, Ellsworth & Kenyon at the Bay of Whales, etc. Historic views. Ex A Leigh Hunt. Fine. \$250
- 614 Documents (8) 1923-35 relating to Antarctic explorer Douglas Mawson, incl 6 signed (in ink) by him. From the archive of A Leigh Hunt, NZ businessman & founder in 1933 of the Antarctic Society of NZ. Items incl: Midland Hotel (Wellington, NZ), notepaper re invitation 16/1/1923 (signed); cablegram 28/2/1930 from Mawson (in Sydney) to Hunt re inability to contact Byrd's Expedition by radio; 16/7/1930 letter (signed) from Adelaide to Hunt with BANZARE letterhead, similar letter 15/4/1931 (signed) re arrangements for Hunt to act as local agent for visit of Mawson's ship "Discovery" (once Scott's ship) to Wellington 26-29 April; photo 20 x 15cm (corner damaged) of Discovery at Clyde Quay, Wgtn (large crowd); similar letter (signed) 20/5/1931 thanking Hunt for his help during the visit. Also Hunt's "discovery, May 2nd 1931" personal file containing many (50+) documents relating to the Discovery at Wellington (correspondence in duplicate, receipts for supplies obtained (incl 20 live sheep) & telegram ex Captain K.N. MacKenzie, personal notes etc). An important Antarctic archive. \$2,300
- 615 Documents (20) 1927-57 relating to Antarctic explorer Rear-Admiral Richard E Byrd. From the archive of Arthur Leigh Hunt (prominent NZ businessman, entrepreneur, advocate of Antarctic exploration & founder in Nov 1933 of the Antarctic Society of NZ). Items incl: 2 tickets (Nov 999-1000) for reception to Byrd in Wellington 16/4/1930, both signed by him & b/s Byrd Antarctic Expedition pictorial cachet; similar and (unsigned) for a reception 8/12/33; fine mounted portrait photo of Byrd & his terrier Igloo at Wgtn, Nov 1928 (signed twice by him); similar photo (signed by Byrd) of Byrd & Douglas Mawson together, Nov 1928 (the 2 first met in Hunt's office); sepia portrait photo 17 x 22mm of Byrd at Antarctic base c1933?, signed by him & inscribed to NZ Antarctic Society. Plus various other Byrd-related letters/covers, 1934 critical "Truth" article re expedition ship c1955 Moral Rearmament statement signed by Byrd, 1966 formal letter of thanks from US Ambassador to Hunt for his decades of assistance to Byrd & US Antarctic activities. Noted 10 items signed (in ink) by Byrd. A unique & significant archive. \$2,000
- 616 M King Edward VII Land 1908 1d. Jury cat \$1750. Mint. \$575
- 617 C/ King Edward VII Land/Victoria Land/Ross Dep 1908-2013 colln in s/b: 1d EVII Land FU; ½d Victoria Land FU (light crease) & 1d MUH then apparently complete colln from 1957 MUH & FU to c2002 then MUH (with FDCs from 2004). \$1,000
- 618 C Ross Dep 1957-2013 colln of 50 diff pictorial/printed FDCs in album. Noted 1967 1st decimal set on 4 diff designs of FDCs. CTO unaddressed FDCs from 1982-2013 & 6 additional FDCs for m/s. Total 31 diff issues. Cat simpl \$1150. Ex Horrell. \$400
- 619 U Victoria Land 1913 ½d on special certificate tied by British Antarctic Expdn JA 18 13 cds (FDI). Stamp cat \$2250. \$1,250

BIDS BELOW 70% OF ESTIMATE WILL NOT BE CONSIDERED

FLIGHT COVERS

| | | | |
|-----|---|---|----------|
| 620 | C | <p>NZ 1920-2000s extensive colln of 850+ flight covers in 9 annotated photo albums. Incls 4-6 Sept 1920 Kaikoura to Christchurch "Per Aerial Post" (with tear damage across top opening), 31 Jan 1921 Christchurch to Timaru & Christchurch to Dunedin via Timaru "Aerial Mail" covers, 380 covers from 1930s (incl 9 Nov 1931 Highfield via Karachi-London Paterson pre FDC with 3d, 4d & 7d airmail stamps, Feb 1932 Paeora Bridge emergency Dunedin-Christchurch signed Wilkes covers x 2 & Oamaru-Christchurch signed Findlay cover, 71 x Xmas 1931, 64 Xmas 1932 mail, 20 x 1934 Kingsford Smith covers & 54 x 30 Oct 1937 set covers), 115 covers from 1940s, 210 covers from 1950s to 1970s, & 130 subsequent covers. Also incl folder with NZ-based NASA Operation Sofia covers (6 diff incl 4 with multiple signatures from 2015-2018 observation flights, probably unique) & 1986 Halley's Comet observation flight covers x 3 (2 signed), along with a range of NASA paraphenalia. Ex Airmail Society member Malcolm Millar.</p> | \$10,000 |
| 621 | C | <p>NZ 1928 Kingsford Smith Southern Cross flight from NZ (13 Oct) carried by T H McWilliams. Cover addressed to E Graham (a/c S Whitehead). Enclosed is letter from R Nicol to E Graham saying that his and another letter for S Whitehead are being carried by "Southern Cross" per favour of Mr McWilliams wireless operator (etc). Cover has 1d Australia GV stamp tied by indistinct Sydney 5am 15 OC cds. 16 covers only carried. NZAMC 32. Cat \$5000.</p> | \$4,000 |
| 622 | / | <p>World 1910-60s Commercial Propeller Aircraft. Barry Smith's 8 frame exhibit incl: 1911 India fine first ever airmail cover, 1911 UK Aerial Post cover; 1917 Italy Turin-Rome cover; 1918 USA Cleveland-New York crash mail; 1923 GB Daimler Airways 4½d airmail cover to Germany; 1925 South Africa last government experimental airmail (Durban-Cape Town) cover to GB; 1926 Australia Camooweal-Charleville cacheted cover; 1927 France Bleriot 2FR & 5FR used (former genuine, latter forgery) with certs; 1929 France reg'd cacheted catapult mail to New York; c1930 Canada various semi-official post airmail stamps & covers; 1933 GB GWR pilot signed Birmingham-Torquay airmail; 1934 Brazil Condor-Lufthansa Trans-Atlantic cacheted commercial cover to London; 1936 NZ unique Scipio crash mail surviving cover to Germany (NZAMC 1327b); 1938 Mozambique reg'd pilot signed cover to Angola (1 of 16); 1938-9 National Airlines x 2, Lockheed 10 covers each with etiquette (1 redesigned), very rare on year of issue covers; 1942 1F75 Madagascar mint stamp, 1944 Germany INSELPOST/Feldpost (Michel 8b) pair mint with cert. Also incl various FFCs, crash covers, stamps, etiquettes, airline promotional ephemera & 3 s/b's of misc (incl another 1927 France 5FR forgery), m/s mint/MUH/used & cinderellas etc. Also 14 items of related literature. An excellent in depth study of the subject.</p> | \$6,500 |

AUSTRALIA

| | | | |
|-----|----|--|---------|
| 623 | U | <p>New South Wales 1850 2d Sydney View, plate II, early impression, bright blue, imperf 4 good margins. Horst Pröschold (Frankfurt) cert (1984). SG 24. Cat £325. FU.</p> | \$250 |
| 624 | M | <p>Tasmania 1857 4d blue horiz strip of 6, imperf, full margins except just touches one stamp on one side, double lined numeral wmk. Ironed out crease between 2nd & 3rd stamp from left. Phil Fed Southern Africa cert (1984). (Note: cert states SG 35, correct at time). Excellent exbn item. SG 37. Cat £3000+. Part gum, mint.</p> | \$1,500 |
| 625 | U | <p>Victoria c1884-6 high values: 2/6d, 3/-, 4/-, 5/-, 6/-, 10/-, 15/-, £1, £1.5, £1.10, £2, 45/-, £5, £6, £7, £8, £9, £10, £25, £50 & £100. All with fine "Melbourne FE 1 01" cds. CTO. Cat £5000+. VFU.</p> | \$2,000 |
| 626 | U | <p>Western Australia 1858 2d Swan brown-black on red, imperf, 3 margins (2 close), cut slightly into design on 4th side. Image on back invtd. SG 15a. Cat £850. FU. Ex Lovis.</p> | \$200 |
| 627 | C | <p>1860 Sydney Ship entire sent from Ballarat to England, with 6d queen on throne (roulette) tied by barred 5 cancel; Ballarat OC 20, Melbourne OC 26 & Weymouth DE 20 cds. Also 1844 Sydney Ship letter entire to London, plus 3 other 1856-60 entires 1 part only) - Geelong to Melbourne, Melbourne to NZ & Hobart to Geelong.</p> | \$500 |
| 628 | C/ | <p>1894 Coolgardie Cycle Express Co. business card 115 x 76mm (James A Healy) with 1/- & 2/6d blue (bicycle) stamps affixed, mint. Also, later 6d, 2/- & 5/- Camel Postman stamps affixed by selvages. Otherwise MUH. Scarce.</p> | \$1,250 |
| 629 | C | <p>1904 cover ex NZ to Tasmania ("Tatts" mail), franked NZ 1d Universal x 2 canc Sydney duplex d/s No. 2? 04 (so posted on ship). At left, fine double oval "LOOSE SHIP / LETTER" h/s (of Sydney). Partly over this are Australia 1902 1d, 4d & 6d emerald-green p11¾ Postage Dues (SG D2, D5. D6?, very fresh colour), FU canc unclear Hobart cds. No due marking visible on cover, so stamps used to pay for postage due on several covers to the same address? Stamps cat SG £44, with multiple x 8 on cover. Hobart receipt b/s 5 NO 04. One spike hole, otherwise fine. A rare combination.</p> | \$350 |
| 630 | U | <p>1916 £1 Roo chocolate & dull blue, narrow crown wmk. SG 44. Cat £1600. GU/FU.</p> | \$1,250 |

| | | | |
|-----|---|--|---------|
| 631 | U | 1917 10/- Roo grey & deep aniline pink, small punctured "OS", misplaced Kangaroo, 3mm to right, 3rd (narrow crown) wmk. Excellent well centered example. Similar item sold Shreves (Arthur Gray) in 2007 for US\$1665. BW 48cb. Cat A\$5000. CTO FU. | \$2,500 |
| 632 | U | 1932 5/- Sydney Harbour Bridge, CTO. FU (no gum). | \$250 |

PACIFIC ISLANDS

| | | | |
|-----|---|---|---------|
| 633 | | Cook Isl 1892 Provisionals set x 6 - all 6 stereo positions with identification notes & sketches. SG 1-4. Cat £1500. | \$1,000 |
| 634 | / | New Guinea 1915-18 seln of GV & Kangaroo NWPI ovpts, 80+ stamps. Cat approx £875 (2017 cat). | \$600 |
| 635 | M | New Guinea 1939 Air inscribed Airmail postage set of 14 to £1. SG cat 212-25. Cat £1100+. VLH mint (some low vals MUH). | \$1,000 |
| 636 | C | Samoa 1847: scarce early missionary entire from Pago Pago, Tutuila to London endorsed "per Trafalgar" (ship) with red PAID SHIP LETTER / JA 22 / 1848 / SYDNEY, transit cancel, black "8", & red "3" (in m/s) overcancelled black m/s "3" (further 3d to pay). Message (headed "Pagopago, Tutuila, Octo. 12th 1847") from H V Murray to Sir Culling Eardly Smith (treasurer of the London Missionary Society): "Dear Sir, I beg to advise you that I have this day drawn a Bill upon you for Sixty Pounds Sterling, in favour of Messrs Awner & McLellan, Merchants, Glasgosw on account of Salary. Requesting that you will be pleased to honour the same". Additional recipient's m/s endorsements include "Received June 2, 1848"; "WC July 20, 1848"; "BB / 143". Ex Wolffers, March 1876 (pencilled m/s). Very fine condition. | \$1,250 |

GREAT BRITAIN

| | | | |
|-----|---|--|---------|
| 637 | C | 1840 1d Mulready envelope (forme A144) with red MC cancel, faults incl part flaps missing, 1d Black (Pl 1b) on entire, red MC cancel, vertical fold clear of stamp, stamp slight scuff. | \$500 |
| 638 | C | 1840 1d Black (FE), plate 9, 4 margins (small to large) with black MC cancel on 26 April 1841 entire to Glasgow, ex Liverpool, with black boxed GLASGOW / 27 AP 1841 / 2 PM arrival cancel on rear. SG Spec £1200. | \$600 |
| 639 | U | 1840 2d Blue x 7 - pl 1 x 4, pl 2 x 3. 4 are 4 margins, 3 are 3 margins, black MC cancels except red (x 1 pl 1). Condition a little mixed. SG cat £7200. | \$875 |
| 640 | U | 1847 1/- green embossed (die II), cut square, 4 margins. SG 55. Cat £1100. GU nearly FU. | \$400 |
| 641 | U | 1854 6d dull lilac embossed, cut square 4 margins except just touches at left. SG 59. Cat £1000. FU. | \$400 |
| 642 | U | 1854 6d purple embossed cut square, 4 margins, very close at base & right, wmk invtd & reversed. SG 60wk. Cat £1000. FU. | \$400 |
| 643 | C | 1857 cover to Sydney, NSW, franked 1856 pale lilac on azure paper (no corner letters), GU/FU, canc 50" diamond in bars obliterator. Red m/s endorsement "17½" (?) B/s "Brixton End" straight-line h/s (blue), London red cds (with crown) 21 FE, 4 partial "[SH]IP LETTER / [SYDNEY]" unframed semi-circular d/s MY 19. Flap tear, otherwise fine. SG 70a. Cat approx £900 on cover. | \$500 |
| 644 | M | 1858 2d deep blue (HR/RH, pl 13) 4 corner letters, thin lines, OG. SG 47. Cat £375. Mint. | \$140 |
| 645 | U | 1864-79 1d red 4 corner letters almost complete set of 150 (missing plates 77 & 163). Overall good condition. Plates 21, 223, 224 & 225 all reasonable, plate 223 blunt corner. GU/FU. | \$375 |
| 646 | U | 1867-83 high value group: 5/- rose wmk MCE, pl 1 & rose & pale rose pl 2; wmk anchor blued paper & white paper. 10/- wmk anchor white paper. Some blemishes but all sound. SG 126 x 2, 127, 130, 134, 135. Cat £15,475. GU/FU. | \$1,450 |
| 647 | U | 1877 1d red 4 corner letters - plate 201 complete sheet reconstruction of 240 stamps. All sound, virtually all with very reasonable cancels. SG cat £1440. Used. | \$300 |
| 648 | U | 1883 9d dull green "GOVT PARCELS" on small piece tied by nearly complete London Depot Parcels Post hooded circular stamp. Stamp good colour, small surface crease. SG O63. Cat £1200. FU. | \$425 |
| 649 | U | 1883 10/- greenish-grey, large uncoloured corner letters, wmk anchor. SG 135. Cat £4000. GU/FU. | \$2,000 |
| 650 | U | 1884 2/6d lilac, 5/- rose, 10/- ultramarine, coloured letters, white paper. SG 178, 180, 183. Cat £935. FU. | \$500 |
| 651 | U | 1884 high values, white paper - 2/6d lilac x 2, 2/6d deep lilac; 5/- crimson x 2; 10/- ultramarine, 10/- pale ultramarine. SG 178-79, 181, 183, 183a. Cat £1710. GU/FU. | \$475 |
| 652 | U | 1884 £1 brown-lilac, wmk crowns, very light surface scuffs. SG 185. Cat £3000. GU/FU. | \$1,500 |

| | | | |
|-----|----|--|---------|
| 653 | M | 1887-97 1½d dull purple & pale green, 1d lilac, 2d grey-green & carmine "GOVT PARCELS". SG O65, O69, O70. Cat £520. Mint. | \$200 |
| 654 | M* | 1887-1900 Jubilee set of 14 (some MUH, 5d patchy gum). SG cat £650+. Mint. | \$230 |
| 655 | M | 1902 1d EVII "R.H. OFFICIAL" ovpt. SG O92. Cat £325. Mint. | \$250 |
| 656 | U | 1902-13 2/6d - £1 EVII. SG cat £1620. FU. | \$1,000 |
| 657 | M | 1903 ½d, 1d, 2d, 2½d, 3d EVII "ADMIRALTY OFFICIAL" ovpt wide "M", also ½d narrow "M". 2d light horiz crease. SG O101-2, O104-7. Cat £1360. Mint. | \$425 |
| 658 | P | 1911 1d scarlet GV Downey head, die proof, Die 2. Uncleared stage 1a proof. Dull grey on proof paper (73mm x 68mm). Ex Stanley Gibbons. SG Spec cat £4750. | \$1,750 |
| 659 | U | 1913 £1 Seahorses green, Waterlow printing, cds, w/c. SG 403. Cat £1400. FU. | \$1,000 |
| 660 | M | 1915 1/- orange-vermilion plate block of 4 - No. 41, p14 x 14. L/H mint (stamps MUH). CP K12b. Cat \$1350. [Note: NZ GV definitive stamps]. | \$600 |
| 661 | / | 1924-5 Empire Exbn, 1935 Jubilee sets with varieties on 2 pgs. Incl Exbn: 1924 1d x 2, 1½d; 1925 1d & 1½d x 2 all mint/MUH plus 1925 1d on Exbn p/c; Jubilee booklet panes of 4 - 1½d, 1d & 1½d plus normal set & 11 plate single/strips all mint/MUH. | \$150 |
| 662 | U | 1929 £1 PUC, cds. SG 438. Cat £550. FU. | \$500 |
| 663 | * | 1937-8 ½d, 1d, 1½d, 2d, 2½d GVI set of booklet panes + 1½d (4 stamps & 2 labels), invt wmks. SG 462bw-4bw, 465cw-5cw. Cat £1395. MUH. | \$425 |

| | | | |
|-----|---|--|---------|
| 664 | P | 1961 Parliamentary Conference set of 2 imprimaturs - imperf on issued paper. "N P IMPRIMATUR" h/ss on back. SG Spec cat £2000. MUH (purchased ex Stanley Gibbons priced at £4500). | \$2,500 |
|-----|---|--|---------|

| | | | |
|-----|---|---|-------|
| 665 | * | 1982 15½p Information Technology imperf block of 4. SG 1196a. Cat £1100. MUH. | \$750 |
|-----|---|---|-------|

BRITISH COMMONWEALTH

| | | | |
|-----|---|---|---------|
| 666 | U | Burma-Japanese Occupation 1942 x 39v used on 3 pages with several inverted surcharges. SG (2023) cat £3850+. | \$1,500 |
| 667 | M | Cyprus 1881 ½d GB QV ovpt "CYPRUS" & "HALF-PENNY", plate 215. SG 7. Cat £800. Mint. | \$300 |
| 668 | S | Cyprus 1921-3 GV "SPECIMEN" ovpts set of 15, wmk mult script CA, minor back thins 10pa orange & green & 6pi. SG 85s-99s. Cat £750. | \$300 |
| 669 | | Egypt 1935 3m vermilion Christmas seal on back of envelope (opened out & flap missing), tied by diamond of dots cancel. Addressed to UK with "Egypt 19 Postage Prepaid" & "MPO 9 DE 35 Cairo" cancels. SG 6. Cat from £250. | \$250 |
| 670 | F | Gibraltar (1886) 1/- bistre x 2 Sperati forgeries different shades, each with BPA reproduction cache on back, one numbered "53" other "B" (which has blunt corner). | \$230 |
| 671 | U | Gibraltar 1927 £1 GV red-orange & black (SG 107) on reg'd cover to England, fine oval reg'd 1 JY 31 cancel (stamp cat £300 FU). | \$300 |
| 672 | U | Gibraltar 1942 2/- GVI Elliott Memorial, broken second "R" in "GIBALTAR" in horiz pair, with normal, p14. SG 128ba. Cat £2500 (MUH), unpriced used. FU. | \$725 |
| 673 | U | Gibraltar 1950 6d GVI New Constitution double ovpt (with normal). SG 142a. Cat £1300. FU. | \$575 |
| 674 | M | Prince Edward Isl 1861 2d rose-carmine, 3d blue, 6d yellow-green x 3 shades, p9. All no gum except 3d, 1 x 6d hinge thin, 1 x 6d short perf. SG 2, 3, 4. Cat £6750. Mint. | \$1,150 |
| 675 | C | Prince Edward Isl 1864 internal letter to Summerside with 2d rose-carmine (p9) tied by oval barred cancel. B/s indistinct "...D ISLAND FE 12 1864" unframed cds. Some perf toning & tears. | \$170 |

FOREIGN

| | | | |
|-----|---|---|---------|
| 676 | M | China 1952 Gymnastics by Radio complete set of 40 in 10 diff blocks of 4 - original printing on thinnish greyish paper. With pair reprints for comparison. SG 1543a-52a. Cat £1000. Mint. | \$1,000 |
|-----|---|---|---------|

Upcoming Auction Dates

- Friday 24th March 2023 - International Numismatic Auction
- Saturday 25th March 2023 - International Stamp Auction
- Friday 22nd September 2023 - International Numismatic Auction
- Saturday 23rd September 2023 - International Stamp Auction

Auctions will be held at the West Plaza Hotel, Wellington

Catalogues will be online at www.mowbraycollectables.com

Thinking of Selling?

We sell more stamps worldwide than any other company in New Zealand, and are now accepting material for our upcoming public auctions.

If you wish to take advantage of new Zealand's number one selling opportunity, contact us now.

Suitable consignments permitting, we may add additional sales.

****CONTACT US NOW****



MOWBRAY COLLECTABLES

Private Bag 63000, Wellington 6140, New Zealand

Phone +64 6 364 8270, fax +64 6 364 8250

Email auctions@mowbrays.nz

Website www.mowbraycollectables.com

Ernest Dickson

Per AERIAL POST.



Mrs Thompson
Ma...

ex 620

AERIAL MAIL

*Posted under
cover at Dunedin.*

Mr. A. Mann.



Per Aeroplane

AERIAL MAIL



Service

14 Day

W. D. Campbell Esq
Raymond Campbell
Sullivan's

Dear Kirk.

was delivered
This arrived to me
about 2 pm. -
bus had returned
Best regards
31.1.21

621

per "Southern Cross"



Mr. G. Graham
c/o Bank of New Zealand
Sydney

c/o S. Whitehead

N. S.W.

LANGGUTH & LANGGUTH
P.O. Box 636
AUCKLAND, N.Z.

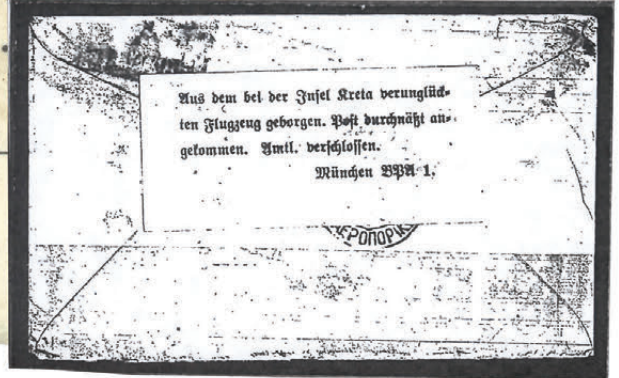
via Australia - New Zealand
N.Z.

Firma
Motoren-Werke Mannheim A.

MANNHEIM

GERMANY

ex 622



THE
Coolgardie Cycle
HUNT ST
(Opposite Post Office)
SPECIAL CYCLE MAIL

HAVING engaged the services of the following
F. P. HOPE, H. YEATES, F. W. WILSON, F. W. BROOKS,
J. H. C. BAMLETT, & c., we are prepared to convey in
of the Field, by day or night, at shortest notice.

Mining Notices put up on Claims, Wages Paid, Claims Pegg
Warden's Office, and all Mining Business trans

Regular Cycle Mail leaves this office for Hannans, (daily),
Yerilla, Pindinni, Mt. Margaret, Norseman, D

JAMES A. HEALY, AGENT.

N.B.—SPECIAL MESSAGES GUARANTEED



628



Mrs Benson
Mrs Larrs
Northgate Street
Warwick

POSTAGE ONE PENNY



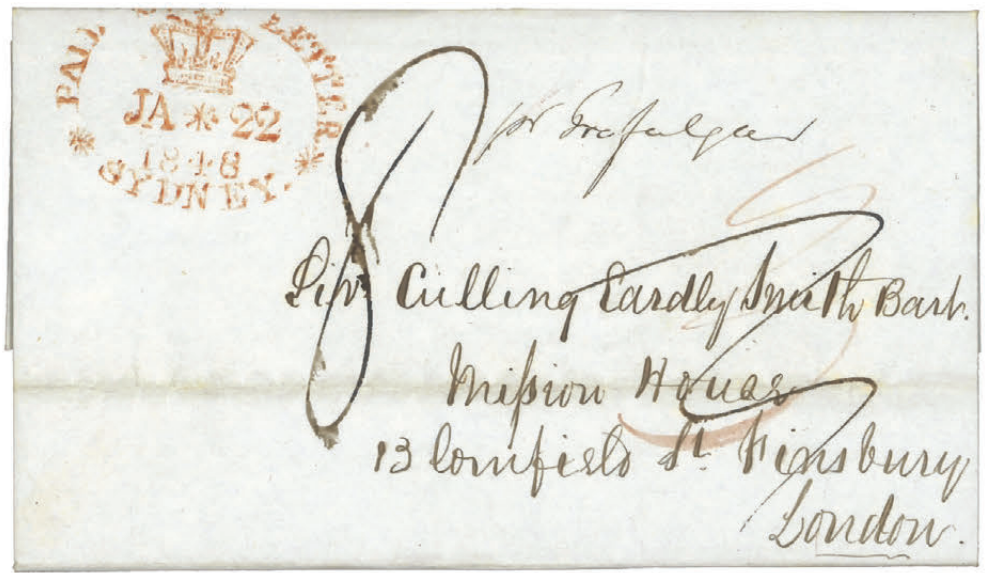
Armstrong
Baker
Glasgow

638

ex 637



ex 635



636



640



642



ex 646



648



649



ex 650



652



658



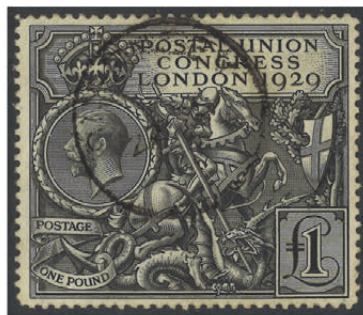
ex 656



ex 656



659



662



664



672



ex 673



ex 674