

# PUBLIC STAMP AUCTION



**SATURDAY 24TH SEPTEMBER 2022 - 12.00 NOON  
AT THE WEST PLAZA HOTEL, WELLINGTON, NZ**

**MOWBRAY COLLECTABLES**



**Lot 226**  
Estimate \$5,000



**Lot 452**  
Estimate \$4,000



**Lot 535**  
Estimate \$6,500



**Lot 636**  
Estimate \$12,000



**Lot 654**  
Estimate \$7,500



ex 9



ex 6



ex 18



ex 36



ex 39



ex 22



ex 43



ex 48



ex 52



ex 54



ex 63



ex 88



ex 86



ex 97



ex 99



ex 100



ex 114



ex 212



ex 218



# MAJOR INTERNATIONAL PUBLIC STAMP AUCTION

**Saturday 24th September 2022**

**commencing 12 noon**

**West Plaza Hotel, Wellington, New Zealand**

Welcome to our 41st sale. This bi-annual auction comprises over NZ\$700,000 of estimates. We are honoured to feature stamps from several major collections of outstanding quality, including the wonderful collection of a private collector, and over 100 other vendors.

- Over 175 collections, worldwide.
- Extensive NZ postal history.
- Quality Full Face Queens.
- NZ modern errors.
- Healths, a major offering of significant covers.
- 1931 Arms including 35/-.
- Strong Great Britain, including 1d Black plate 11 on cover, plate 1a mint.

We are certain that there is something for everyone in this sale, with conservative estimates to attract bidding.

To those clients looking to widen their collecting interests or start a new field, there is a wide range of collections which provide a wonderful opportunity to form the start of a significant collection.

The market remains strong after a good recovery from the Covid lockdown. Overseas bidders please note that the mails are still very slow and unreliable, so please send your bids by email, via the website, fax or phone through to us, if possible.

This year we have introduced live online bidding through Auction Mobility (see page 3). We have used this system successfully with our coin auctions and are pleased to now offer this facility to our world wide clientele. With postal delays world-wide, we strongly recommend you email your bids, or use the online bidding platforms.

We urge collectors planning to attend this sale not to leave their viewing until the day of the sale as not too many people can view the same item simultaneously – so come on the Thursday or Friday – or arrange to view prior to Wednesday 21st September at our premises in Otaki. We are only 15 minutes from Paraparaumu Airport and ten minutes from Waikanae commuter railway station. We can pick you up from either (by appointment only).

Like last year's sale we expect a huge interest with a large number of room bidders. My thanks go to Chris Burtt, David Smitham, Graham Burnett, Alan Jackson and Ken Markham, who have produced another great catalogue for our 41st sale, ably assisted by our office staff of Maree Malin, Jan Macdonald, Kirsten Fulford, Keren Malin, Jane Smelt and Jackie Job. We look forward to your participation in this sale and wish you well with your bidding.

John Mowbray  
Managing Director



**MOWBRAY COLLECTABLES**

**Private Bag 63000, Wellington 6140, New Zealand**

**Phone +64 6 364 8270, Fax +64 6 364 8252**

**Email [auctions@mowbrays.nz](mailto:auctions@mowbrays.nz), Website [www.mowbraycollectables.com](http://www.mowbraycollectables.com)**

# Live Online Bidding

Live online bidding during the auction is now available. You can bid prior to, or LIVE during the auction via either a mobile app (IOS or Android) or your desktop computer/laptop, allowing you to bid from anywhere, and follow the auction progress online. (Official auction results will be included in advice from Mowbray Collectables).

Visit our website to register [www.mowbraycollectables.com](http://www.mowbraycollectables.com)

**Please note that a 3% surcharge will apply to all successful bids placed through the Auction Mobility bidding facility.**

You can still place pre-auction absentee bids by the usual methods including via our home website [www.mowbraycollectables.com](http://www.mowbraycollectables.com).

Please don't hesitate to contact us for any questions about bidding.

## Sports Memorabilia Online Auction Tuesday 29th November 2022

The team at Mowbrays Collectables recently sold an original 1905 All Blacks Jersey and a 1905 Wales jersey from the personal collection of All Black number 128 (Alex MacDonald), along with other associated memorabilia. We successfully sold the entire collection to a domestic customer for \$125,000.

Our first Sports Memorabilia Auction follows, and we are accepting entries now. Sell your sports items alongside Olympic, Commonwealth Games, International Rugby items and top shooting trophies already entered.

**Contact Brendan Watson or John Mowbray on +64 6 364 8270  
or email [retail@mowbrays.nz](mailto:retail@mowbrays.nz)**



VISIT OUR WEB-SITE TO VIEW THE CATALOGUE AND PLACE BIDS:  
[www.mowbraycollectables.com](http://www.mowbraycollectables.com)

### INSPECTION OF LOTS

At the premises of Mowbray Collectables, Main Highway, Otaki, by appointment: from about Monday 29th August to Tuesday 20th September during normal office hours;  
at the West Plaza Hotel, Wellington: Thursday 22nd September - 10am to 5.30pm,  
Friday 23rd September - 9am to 5.30pm, and Saturday 24th September prior to the Auction - from 9am.

### BIDDING

Bids can be placed live during the auction via our live bidding platform (see page 3).  
Otherwise by mail, phone, fax or email - such bids should be received in our office no later than 8am NZ time (GMT + 12 hours) Saturday 24th September (at your risk if not received in time). Due to mail delays, please send bids by email, phone, fax or via the website. Telephone bidding may be made during the auction by prior arrangement only.

### BUYERS PREMIUM

Buyers Premium of 17% (plus GST on buyers premium for NZ buyers) will be added to the hammer price of each lot. (All buyers please note: no GST will be added to the *hammer price* of lots).

### ESTIMATES ARE IN NEW ZEALAND DOLLARS

### EXCHANGE RATES

At time of going to press and subject to change: NZ \$1 = UK 52p, USA 62c, Euro 62c, Australia 90c

### PHOTOCOPIES/SCANS OF LOTS

Available on request. We can supply representative images of bulk lots or collections.

ALL LOTS ARE ILLUSTRATED ONLINE [www.mowbraycollectables.com](http://www.mowbraycollectables.com)

### WE ACCEPT ALL MAJOR CREDIT CARDS

Credit card payments incur a surcharge of 2% for Visa/Mastercard, and 3% for American Express.

### BIDS UNDER 70% OF ESTIMATE WILL NOT BE ACCEPTED

This is the minimum reserve on all lots. No vendor bids shall be accepted.

### Mowbray Collectables - Registered Auctioneers

### UNCONDITIONAL GUARANTEE

Every individual lot in this auction is unconditionally guaranteed to match the description & be genuinely as described. Any lots found not to match our description may be returned within seven days for credit or refund.

This guarantee does not extend to collections or mixed lots.

### YOU CAN BID IN OUR SALES WITH CONFIDENCE

### EXPLANATION OF SYMBOLS & ABBREVIATIONS

*	Mint never hinged	/	Mint & used	pmk	Postmark
MUH	Mint never hinged	L	Label	h/s	Handstamp
M	Mint hinged or unused	F	Forgery	b/s	Backstamp
FU	Fine Used	C	Cover/Postcard/Entire	FDC	First day cover
GU	Good used	cds	Circular date stamp	P	Proof
U	Used	m/s	Manuscript OR Miniature Sheet	PPC	Picture Postcard
PU	Postally used	CTO	Cancelled to Order	H/H	Heavily Hinged
o/c	Off centre	SG	Stanley Gibbons	MNG	Mint no gum
OG	Original gum	CP	Campbell Paterson	R	Revenue
E	Essay	BW	Brusden White		

### COIN & BANKNOTE PUBLIC AUCTION

Our 29th Coin & Banknote Auction is on Friday 23rd September 2022 commencing at 12.30pm at the same venue. View catalogues online at [www.mowbraycollectables.com](http://www.mowbraycollectables.com)

# CONDITIONS OF SALE

1. INSPECTION : No lot is available for inspection by post.
2. EXTENSION: extensions for certificates will only be granted on application prior to the conclusion of the auction. John Mowbray International will submit all items so requested by successful bidders to the reputable authority of their choice, in most instances this would be the Royal Philatelic Society of New Zealand, or the Royal Philatelic Society, London. The cost of certification + postage and handling will be charged only if the relevant clear certificate has been received.
3. BIDDING
  - 3.1 Bidding either in absentia or in the room will bind the bidder to these conditions of sale.

Subject to any reserve price, the highest bidder shall purchase the lot: any dispute arising as to who is the highest bidder shall be determined by the Auctioneer who may offer the lot again.

The Auctioneer may group, split up or withdraw lots, and transfer bids to identical lots at his discretion.
  - 3.2 Bidders shall be deemed to purchase as buyers unless prior to bidding they have given the Auctioneer a copy of a written authority to bid on behalf of another person.
  - 3.3 Where an agent purchases on behalf of an undisclosed client, such agent shall be personally liable for payment of the purchase money to the Auctioneer and for safe delivery of the lot to the said client.
  - 3.4 Vendor bids shall not be accepted.
4. BIDDING INCREMENTS: Postal bids must comply with the following steps:

Under \$250 - \$10 increases	\$5,000-\$10,000 - \$250 increases
\$250-\$1,000 - \$25 increases	\$10,000-\$20,000 - \$500 increases
\$1,000-\$2,000 - \$50 increases	\$20,000 and above - \$1,000 increases
\$2,000-\$5,000 - \$100 increases	
5. ABSENTEE BIDDERS: Bids will be accepted from persons unable to attend the auction, and their bids will be treated in utmost confidence and managed as though the bidder is in the room. The Auctioneer shall not be liable for errors or omissions in executing bids. **Live online bidding** is possible through Auction Mobility, through our website. An extra 3% charge applies to all successful Auction Mobility bids.

Absentee bidders, who have not seen the lots they are buying, may reject any lot with the exception of bulk or mixed lots and collections, where the description is not in accordance with that given in the catalogue. However, any such lots are only returnable within seven days of receipt, and in the condition received.
6. ESTIMATES: These are conservative. Bidding will commence at a bidding increment over the second highest postal/ absentee bid received prior to commencement of the auction. Where one or no bids have been received, bidding will commence at seventy percent (70%) of the lot estimate.
7. PAYMENT: Lots will be at the buyer's risk from the fall of the hammer but title shall not pass until payment in full has been made of the purchase price (hammer price plus 17% buyer's premium (plus GST on buyers premium for NZ buyers) and, if applicable, interest). Payment and clearance of lots by room buyers may be carried out on the day of the sale. Payment by absentee bidders must be made upon receipt of invoice. Payments not received within 30 days of auction date may be subject to 2% penalty interest per month from the auction date.
8. No GST is charged on the hammer price, but purchasers outside New Zealand undertake that neither they or an associated person will cause the goods to be re-imported into New Zealand in substantially the same condition in which they were exported.
9. FAILURE TO PAY: If the buyer breaches Condition 7, the Auctioneer, without prejudice to any other rights available to it, shall be entitled without notice to the buyer to exercise one or more of the following rights and remedies:-
  - 9.1 to terminate the contract with the buyer and any monies which the buyer has paid to the Auctioneer on account of such purchase or purchases shall be forfeited;
  - 9.2 to terminate the contract, resell the lot at any time by public auction and the buyer shall pay to the Auctioneer any resulting deficiency in the purchase price (plus interest) and insurance. Any surplus shall be paid to the vendor;
  - 9.3 to apply any monies at any time due by the Auctioneer to the buyer in payment of the purchase price (plus interest). The Auctioneer shall have a lien over any property of the buyer in the possession of the Auctioneer, in order to secure any monies due to the Auctioneer; and
  - 9.4 to proceed against the buyer for damages for breach of contract.
10. The Auctioneer reserves the right to refuse admission to any person to either viewing or the sale room, and the Auctioneer may refuse any bid.
11. GOVERNING LAW: These conditions shall be governed by and constructed in accordance with the laws from time to time in force in New Zealand and the parties hereto irrevocably submit to the non-exclusive jurisdiction of the Courts of New Zealand.

# COLLECTIONS and ACCUMULATIONS

- 1 / All World c1860- c1910 mostly used colln on approx 170 pages but most are glued down. Noted: NZ: 8 (perf) FQs to 1/-, 6d VR Life Ins; Samoa Express 1d to 5/- CTO remainders; USA Columbians range to 30c; Hong Kong various QV used in Shanghai, Foochowfoo etc; GB range to 10/- QV. Colln has postage, revenue & locals & a few stationery cutouts. Mixed cond. 1050+v. \$450
- 2 / All World c1870s-1935 extensive colln in KABE album (produced 1934) with apparently spaces for all European stamps & ROW represented. Colln virtually all Europe incl very good representation of Denmark (good earlyies), Iceland, Norway, Italy & Sweden (noted several 1924 UPU issues). About 4000 stamps, above average cond. STC US\$7000+. Mix mint & used. \$1,500
- 3 / Aitutaki 1903-2019 mint colln (some sets MUH) in 6 albums, appears complete incl m/ss. Noted: GV 3d & 1/- 2 perf pairs; 1903 Pict set & extra 6d & 1/-; also a few used stamps & dupn. High cv. Weighs 5.5kg. \$1,100
- 4 / Art c1960s-70s Thematic colln/accum in packets, mostly paintings - range of countries, nearly all appear as sets (several 100s sets). No apparent duplication. Mostly CTO/FU. \$300
- 5 / Australia & States 1850s-1990s colln of 2000+ mostly used in large s/b. Noted: NSW 1854 1/- imperf FU & 1856 Registered letters stamp imperf FU; Queensland 1882 5/- MNG; South Australia 1856-8 1d & 2d imperf FU; Tasmania 1860 6d imperf FU x 2 & 1899 Pictorial set (no 5d) mint; Victoria 1854 2/- imperf GU/FU; 1913 2/- brown Roo x 2, GV 1½d red HALEPENCE flaw, 1934-5 Victoria & Anzac sets FU, 1937 Pictorials set to £1 FU. \$500
- 6 / Australian States 1850-1900s accum of 52 mint & used on 2 Hagner equivalent pages. Noted: Victoria 1900 Patriotic Fund set, 1901 £1 p12½ wmk V over Crown & 1906 £2 p12½ wmk Crown over A FU/CTO; NSW 1850 1d no clouds 3 margins GU/FU, 1851 2d plate IV 4 margins GU & 1850 3d 2 margins GU; Tasmania 1892-9 set of 10 to £1 MUH (tone spots on 10/-) & 1899 Pictorials set of 8 mint. SG cat £4200+. \$2,000
- 7 / Australian States c1860s-1900s extensive accum in 4 s/bs, special Seven Seas album, bundle of Hagners packets etc. Wide range of issues of all States some pages annotated, noting a good seln early imperfs etc. Massive cv. Maybe as many as 6000 stamps. Well worth inspection. \$1,750
- 8 Australia c1890s-1970s Railway parcel stamps etc colln on pages - some annotations. Incl 68 NSW, 57 Queensland, 11 WA etc. Good variety but also dupn. Noted also 1917 Trans Australian Railway opening WA State School Empire Fund label (purple). \$400
- 9 / Australia c1913s-30s untidy mostly used accum/colln on Hagners & in album. Good range of Roos about 500 to 5/- & GV Heads well over 1000 all values to 1/4d. Specialisation especially GV Heads, also many perfins. Also noted BCOF set, 5/- Bridge x 5 (4 have minor faults), OS ovpt issues, £1 King & Queen 10/-, £1 (MUH); 1953-4 Navigators etc. \$1,150
- 10 / Australia 1913-1980 colln of 2500+ mint & used on rather disorganised pages. Noted: Roos 4d orange x 4 GU/FU, 5d chestnut x 2 FU, 2/- brown x 5 GU/FU, 5/- grey-yellow x 7 GU/FU, 6d Kookaburra claret FU, Robes 10/- x 7, £1 x 6 GU/FU, Arms (£1 x 7m £2 x 6 GU/FU), Navigators £1 x 4 GU/FU, £2 mint & used, perf OS x 20 diff, ovpt OS x 5 diff incl 1/- Lyrebird GU. \$1,000
- 11 / Australia 1913-88 colln virtually complete on Seven Seas pages, mix mint (appear all MUH from 1980) - all in mounts, some mixed cond. Noted in good cond, used: Roos to 5/-; GV Heads set; 1914 6d Kookaburra; some early key commems; 1963-4 Navigators (7/6d MUH, 10/- mint). Mint: 1928 Exbn m/s. Good cv. \$500
- 12 / Australia 1913-83 mostly used colln in 3 loose-leaf albums ("Seven Seas" pages). Noted Roos to 5/- (various wmk & 1932 10/- heavy cancel); GV Heads to 1/4d (x 3); 1914 6d Kookaburra; 1930s commem sets (but no 5/- Bridge). Appears near complete simplified from 1938 defins (noted 1946-7 BCOF ovpts to 2/-, Arms set FU). \$400
- 13 / Australia 1913-50s useful mint & used range in s/b. Noted Roos range to 5/- used, GV Heads to 1/4d mint & used (no 4d lemon mint), good range 1930s commems, 1948 Arms to £2 mint & used etc. \$500
- 14 / Australia States 1850s-1900s. Some better earlyies incl Victoria QV ½ length 1d 3½ margins 2nd state & 4 margins 3rd state + 1 other, 2/- SG 35; NSW registered imperf (touching 1 side); Tasmania 1d rouletted 8, etc. Queensland 1867 5/- & 5/- Duty Stamp postally used. 35 stamps, condition varies. \$475
- 15 / Austria 1850-1954 comprehensive specialised mint & used colln in Warwick multiring album on annotated (typed) pages. Noted used: 1850 x 5 imperfs (2k poor cond); Franz Joseph x 150+ Kreuzer & Guilden currency (a few mint); 125+ Heler & Krone; good range Dues (many mint) & Newspaper stamps (many mint). Mint: many useful commem sets from 1919. Total about 1500 stamps. High cv. \$1,150

**BID BY MAIL, FAX, TELEPHONE, E-MAIL OR ONLINE AT [WWW.MOWBRAYCOLLECTABLES.COM](http://WWW.MOWBRAYCOLLECTABLES.COM)**

16	M*	Austria 1920s-95 colln in 2 deluxe albums on Lindner & Leuchtturm pre-printed pgs with see-through mounts. Nearly complete MUH 1945 onward. Also 8 Hitler stamps ovpt Osterreich with portrait obliterated by ink blot (similar listed by Michel for Germany). Mint/MUH.	\$750
17	/	Bavaria 1849-1920 comprehensive specialised mint & used colln on annotated (typed) pages. Incl Numerals imperf x 32; 1862 3k Postage Due imperf (reasonable cond); Coat of Arms x 16 imperf; about 120 Coat of Arms perf; 1911 Luitpold Birthday sets mint & used (cto); 1916 Officials mint & FU (mostly cto incl probable 1m purple); all issues to 1920; plus German ovpts on Bavarian stamps & 28 Bavarian State Railway stamps. Cond of earlies varies, huge cv, even allowing for the many cto stamps. About 700 stamps.	\$1,500
18	/	Belgium 1879-1960s Railway Parcel stamps extensive colln/accum in 3 albums. Good coverage all issues, noted: 1891 2 sets used (mixed cond); Nord-Midi Junction set of 2 mint (SG P1451-2, cat £525); 1960 75th Railway Cong Assn set x 2 mint; 1968 Electric Train set mint, incl official railway stamps. Also range Newspaper stamps. Much dupn but incl good range of station cancels. About 1750 stamps. Also album 130+ Railway receipt documents with stamps.	\$1,500
19	/	Birds thematic colln on pages arranged thematically by country. Nothing scarce noted but nice range. About 1500 stamps. Also incl NZ 1986 30c Kokako NZPF envelope additionally illustrated with a Kokako by Janet Marshall (& signed) - a magnificent addition to a thematic bird colln.	\$500
20	M*	British Antarctic Territory 1963-2012 mint colln (some sets MUH incl 1963 Picts) in 3 albums. Appears complete plus some duplication. Good cv.	\$1,000
21	/	British Empire 1840-1900 QV colln in "Imperial" SG album (pub 1897). Noted: 1d Black; 9 Cape of Good Hope triangulars & 5 NZ FFQs (all poor cond). Also noted NZ 6d FSF mint. Very sparse, only 300+ stamps but magnificent album.	\$300
22	/	British Commonwealth countries A-B c1870s-1950s colln on pages mix mint & used. Noted mint: Aden 1937 Picts short set to 1r; Antigua: 1886 1/- QV, 1908 Arms set, 1922-7 GV 2/- to 4/-; Ascension: 1922 ovpts set (no 5/-), 1924 Badge set (5d tone, 2/- & 3/- MUH), 1938 Picts seln to 1/-, 1956 Picts set; St Vincent: c1870-80 QV x 11 (some tone); Bahamas: 1948 Picts set; Barbados: 1950 Picts set; Bermuda: GV 2/-, 2/6d, 4/-, 5/-, 1921 Tercet set, GVI 2/- to £1. Used Ascension 1934 Picts set; Bermuda GV £1 on commercial cover; GV 10/- & 12/6d (fiscal cancel). Plus many other useful items. Over 600 stamps. High cv.	\$1,750
23	/	British Commonwealth 1894-c2000s seln of 140 mostly mint on 7 Hagner type pages. Noted Australia: 1) Roos short set of 11 to 1/- mint, 2/- BCOF MUH, 2/- to £1 New Guinea (NW Pacific Islands ovpts) mint (toning on 5/- & £1) & £2 FU (corner missing); 2) 6d claret Kookaburra mint; 3) Bridge set to 5/- FU; Papua 1910 set of 8 to 2/6d mint; Brunei 1895 set of 10 FU (\$1 two blunt corners) with 10c-50c mint; North Borneo 1894 set of 9 mint.	\$1,100
24	U	British Commonwealth 1935 Silver Jubilee Omnibus almost complete used colln on Hagners. Missing Ascension, Morocco Agencies (British & Spanish currency), South West Africa sets & Egypt-British Forces stamp; South Africa singles (rather than joined) pairs. Fine cancellations throughout. SG cat £1760.	\$750
25	M*	British Commonwealth 1935 Silver Jubilee Omnibus complete mint/MUH colln of 249 stamps on Hagners (excl Egypt-British Forces stamp). Also incl additional Leeward Isl & Montserrat perf SPECIMEN sets, Jamaica 6d & Trinidad & Tobago 2c lightning conductor flaws, Samoa 1d p14 x 14½, South Africa 6d with cleft skull flaw. SG cat £2074.	\$1,500
26	/	British Commonwealth 1937-53 GVI mix mint & used colln in special SG album. Reasonable coverage but some stamps removed. Noted mint: Aden 1951 new currency ovpt set; Basutoland 1938 short set to 5/-; Malayan States some high vals; £1 Leeward Isl (MUH); Mauritius 1938 set; Montserrat 1938 10/- & £1, 1951 set; Morocco Agencies 1949 & 1951 sets; North Borneo 1951 set; Sarawak 1950 set; Sudan 1951 normal & officials sets; Swaziland 1938 set, Turks & Caicos 1951 set (MUH). Used: Northern Rhodesia 1938 1/- to 20/-. Some staining/toning to album but stamps virtually unaffected.	\$800
27	M	British Commonwealth 1937 Coronation, 1946 Peace & 1953 Coronation complete omnibus sets. The 2 Coronation collns in special albums. Cat £425.	\$250
28	/	British Commonwealth 1937-53 Omnibus issues: 1) 1937 Coronation complete mint & used sets of 202 in s/b; 2) 1945-6 Victory almost complete (missing Antigua, British Guiana, Falkland Isl Deps, Malta, Nyasaland & St Kitts-Nevis sets) in mint blocks of 4 (except singles of NZ, Cook Isl, Niue & Western Samoa) in s/b; (3) 1949 UPU seln of 19 mint & 15 used; & 4) 1953 Coronation complete mint set of 106 stamps in annotated album. SG cat £905.	\$500
29	/	British Commonwealth 1938-65 tidy seln of 1000 mainly in complete sets on Hagners (33 mint, 21 MUH & 13 used), incl high face values. Incl Antigua 1953 set of 15 MUH, Ascension 1956 set of 13 mint, Bahamas 1954 set of 16 MUH, British Honduras 1953 set of 12 mint, Falkland Isl Deps set of 15 used, St Kitts-Nevis 1954 set of 15 mint, St Helena 1938 set of 14 mint, Sarawak 1955 set of 15 MUH, Sudan 1948 official set of 16 mint, Swaziland 1956 set of 12 mint, Tristan da Cunha 1952 set of 12 mint. SG cat £4200.	\$1,500



30	/	British Commonwealth 1948-9 Silver Wedding 131 of the 138 issues - missing 5r Somaliland; plus Tangier, South Africa & SWA sets. Mint (£1 Jamaica & \$4.80 T&T FU). Cat £2200+.	\$1,000
31	/	British Commonwealth 1948 Silver Wedding Omnibus seln of 48 mint (12 MUH) & 20 used sets on Hagners. Incl Northern Rhodesia mint, Hong Kong used, Aden used & Malaya (Perlis) used sets. SG cat £2040. Mint/MUH/used.	\$850
32	*	British Commonwealth 1949 UPU omnibus complete colln of 310 stamps (plus Bahawalpur ordinary & officials perf var sets). Cat £395. MUH.	\$250
33	/	British Commonwealth (incl GB) 1952-60 QEII mix mint & used in good SG New Age springback album. Noted many good sets. Mint: 1953 Aden Hadhramaut; 1953 Bermuda; 1953 Caymans (no 2/-, 10/-); 1954 Malta; 1956 Sierra Leone. Used: GB specialised Wildings; 1956 BSI (a few mint, 10/- FU), plus many individual good items. Probably a couple thousand stamps. Good Cv.	\$750
34	/	Canada c1859-1970s colln on Hagners & pages. Good range all issues to c1950 but mixed cond, incl used about 150 QV (noted \$2 Jubilee GU faults); EVII x about 75 to 50c incl Quebec set etc. Mint noted in good cond but some disturbed gum. ½c, 8c x 2, 10c Jubilees (paper adhesions); 1935 Picts to \$1; 1897 ½c QV irregular block of 10 (MUH); \$1 Mt Cavell etc. Also noted about 110 QEII booklet panes. High cv. Mint/MUH & used.	\$2,500
35	U	Canada 1859-c1995 used colln in s/b. Noted 1859 2c rose-red mint, perf tones (SG 44, cat £600); 1897 Jubilee range to \$2; 1907 Quebec set mint/used & a few Revenues at end. Dupn & some mixed cond. First 3 pgs cat £4200+.	\$950
36	/	Cook Isl 1892-1946 Provisionals to Pictorials mostly mint (many sets, mainly later are MUH). Noted: Provisionals x 3 sets - mint & 2 FU 1 plus 1d & 1½d blocks of 4 mint; good seln Makea's & Terns incl several sets mostly mint, noted "MANUAE" s/l h/s on ½d Tern, not seen by us; GV 2 perf pair blocks of 4 set; 1921 QVLT 2/6d - £1 set mint; Arms 2/6d to £5 (£5 x 2); good seln all Pict sets incl large blocks 1944-6 set. Good cv. Also 3 real photo p/cs & 2 envelopes incl 9d GV.	\$2,000
37	/	Cook Isl 1946-2019 apparently complete mint in 15 albums, also incl 'Rarotonga' issues from 2011 (many sets especially later are MUH). Noted: 1949 Picts set in block of 4s; 1963 Pictorials plate block of 4 set; £1 Arms Airmail missing plane in block of 4 (FU) & single (mint); 10/- Airmail block of 4 (FU); \$2 (x 3), \$6 & \$10 Arms ovpts & all the high vals from 1967 onwards. A very extensive colln incl the not often seen very recent issues. Huge cv. Weight 15kg.	\$2,750
38	/	Denmark 1851-1950s colln mix of mint & used in Schaubek springback album. Noted used: 1851 4rbs; 1854 set (all 4 margins except 16sk 3 margins); 1858 set, 1864 set (8sk o/c); 1870 set (no 16sk, 48sk faded); 1875 set; 1904 set; 1912 5k GPO x 2. Mint: 1950 numerals set; 1912-5 surcharges; 1918 27ö ovpt Newspaper set; 1925 Airs set; then mostly complete to 1950s. Also good seln back of book mix mint & used. Vendor STC about US\$6000.	\$1,750
39	/	Falkland Isl 1878-2013 extensive colln in 9 albums virtually complete, nearly all mint but many sets to 1966 mint & used. Noted: 1878 QV set + extra shades; 1904 EVII set (incl 5/- x 2 & extra 3/- FU); 1912 GV set plus shades incl extra 5/-; 1929 GV short set to 10/-; 1933 Picts short set to 2/6d; 1938 Picts set (plus FU set); 1948 Silver Jubilee set (10/- is FU); 1952 Picts; 1960 Picts (plus FU set); etc etc. High cv.	\$3,750
40	/	Falkland Isl Deps 1944-85 mint colln complete, noted: 1944 ovpts sets; 1946 & 1948 thick & thin lined map set, plus thick set with gap in 180° var; 1954 Picts set etc. Plus dupn noted 1954 Picts 2 extra sets. Also a few used.	\$750
41	/	Fiji 1878-1975 colln on 51 pgs. Noted: 1891 2½d on 2d "large falling diamond" flaw, mint (SG 71 var); 1891 ½d p11 double perfs (1 row blind, in lower margin) mint; useful range GV incl £1 (die II) used; GVI set mint; QEII £1 mint. Cat £2000. Mint & used.	\$750
42	M*	Fiji c1891-2016 extensive mint/MUH colln on pages (several 1891-8 issues used), all in mounts. Noted: 1903 EVII wmk crown CA short set to 5/-; 1912 GV wmk mult crown CA short set to 5/- with shades; 1922-7 GV wmk mult script CA set (to 5/-); virtually complete from 1935 & all appear MUH from mid 1970s.	\$1,000
43	/	France 1849-1980s colln in 3 Davo hingeless albums, most pre WWI used. Noted 13 early imperfs, 1869 5F Napoleon used (minor faults), 23 other Ceres/Napoleon used, 1876 5F Peace & Commerce FU, Mouchon 3c mint; good range of Mersons; 1917 War Orphans to 35c + 25c mint; 1918 Red Cross mint; 1926 surcharges set mint; 1926 War Orphans mint; 1928 Sinking Fund VFU; 1930 & 1931 Sinking Fund mint; 1937 Museum set of 2 MUH. Nearly complete thereafter, mostly mint. 1947 & 1949 500F mint. From c1970s mainly MUH. Mint/MUH.	\$2,000
44	/	France c1853-1970s mostly used colln on pages. Noted: 18 Napoleon imperfs + 20c on 1860 entire; 17 perf Napoleons; c1870s 23 Cereses (incl 5 imperf); some useful 1920s-30 Commems incl 20F Pont du Gard: good coverage to 1970s. Also some back of book. Well over 2000 stamps.	\$600

45	/	GB & British Commonwealth 1840-1990s collns/accum in album pages & 2 small s/b. The GB colln tidy in Senator album. Noted 1849 1d Black (no margins close all round) & 2d Blue 4 margins except touches 1 corner, reasonable coverage but no key items. The British Comm collns/accums c1890-1980s rather untidy. A reasonable NZ colln incl 13 perf FFQs, used Red & Blue Boys. Better items mint incl: Gambia 1938 5/- & 10/- Picts; KUT 1938 50c-10/- Picts; CGH 4d Triangular (no gum); Nyasaland 1938 GVI short set of 5/-; 1949 UPU Omnibus complete. Also an Egypt colln c1860s-1969s with many useful mint & used items. Total several thousand stamps.	\$1,500
46	/	GB 1840-1988 used colln in L/H standard album - rather untidy (a few m/ss etc mint). Noted 1d Black x 5 (4 with red MC cancels, all 1-2 margins at best); 250+ other QV incl 1d Reds most plate No's (no good no's) & 1852 10/- x 2 (1 good, other toned); mostly complete from 1935 incl 1948 £1 Silver Wedding MUH & GU/FU. A few regionals, officials etc.	\$850
47	U	GB 1840-1900 colln of 78 used in SG Victoria era hingeless album with slipcase. Noted: 1d Black (DG) (4 margins 2 close, plate 8, red MC); 1867 9d pale straw GU with wing margin & 2/- deep blue FU; 1873 6d grey GU; 1884 5/- crimson FU & 10/- ultramarine (GU bit grubby); 1883 set of 10 GU/FU (9d with heavy cancel). Also incl 1d Mulready letter sheet (black MC cancel & April/May 1841 b/ss, folded not in line with design) & 1d Black (FJ) (3½ margins, plate 1b, red MC cancel) on piece from cover with SEP 5 1840 b/s).	\$1,500
48	/	GB 1840-1990s substantial colln in 4 SG Windsor albums. Noted: 1840 3 x 1d Black, 4 x 2d blue (minor faults etc); 1841 13 x 1d red, 5 x 2d blue; 1855 1d p14 small Crown wmk invtd FU, 1d plate nos, scarce plate 133 block of 4 (separation) mint/MUH; plate 159 block of 6 mint/MUH; embossed 6d 2 margins; 10d & 1/- cut to shape; Surface printed to 1880 x 60+, incl 9d SG 87 GU/FU (SG cat £575); 2d Stars, perf x 7; 9d SG 110 GU/FU (SG cat £325); 1883 5d, 9d lilac & green used (good colour); Jubilees mint incl 5d, 6d, 9d; EVII mint incl 2d, 4d, (both), 6d, 7d, 9d, 10d, 1/-; used 4 x 2/6d; 2 x 5/-; GV Royal Cypher mint set of control singles excl 9d green; GVI the three £1 all MUH; QEII 1955 Castles mint; 1958 graphite set MUH + 2½d graphite wmk invtd MUH & 1½d used; 1959 phosphor-graphite set mint & MUH; Guernsey 1941 set in blocks mint/MUH & banknote pair MUH.	\$2,700
49	C/	GB 1840s-1970s colln in s/b. Noted: 1840 1d Black & 2d blue each x 3 (mixed cond); 1924-5 Empire Exbn sets MUH (1925 1d small tone spot); 1949 £1 Silver Jubilee MUH; 1951 5/- Dover MUH; 1959 Wildings phosphor graphite set of 8 in block of 6s (cat £600); plus other useful items, about 500 stamps. Mint/MUH/used.	\$850
50	U	GB 1840-c1980 used colln on pages. Noted 1840 2d blue (3 margins thinned); good seln QV surface prints (with abnormally fine pmks); 1883 2/6d & 5/-; 2/6d & 5/- EVII & 10/- Seahorse (BW original design); reasonably complete 1935 to mid 1970s.	\$500
51	/	GB 1840-1978 colln of 1200+ mint & used (from 1946) in Warwick album. Noted: 1840 1d Black (pl 2, 4 margin 2 close, red MC), 1940 2d blue (pl 1, 4 margins 2 close, red MC), 1865 1/- green, 1883 5/- rose, 1883 5d & 6d dull green. Also incl separate s/b of 950 used GB duplicates. Mixed cond. SG cat £8000+.	\$1,000
52	/	GB 1840-79 QV engraved issues colln/accum on Hagners & old pages. Noted: Mulready envelope (very ragged), 14 1d Blacks & 1 on part entire; 1d Reds imperf about 50 + 9 covers, 2d imperf 14 + 1 cover; 1d Red perf 250+ (incl a few mint) + 9 covers; 2d perf 20+ + 3 covers etc etc. Very mixed cond & massive cv.	\$3,000
53	/	GB 1840-1968 colln on SG "Windsor" pages, some specialisation, mix mint & used. Patchy in places but better items incl used: 1d Black (plate 3, red MC cancel); 1840 2d blue x 2 (3 margins & no margins); 1d red 4 corner letters missing only 23 plate No's (No 223, 224, 225 but some useful seen); 2d blue all 7 plates; GV Downey Heads good seln; 2/6d - 10/- Seahorses original designs; QEII Wildings specialised seln (mix mint & used); mint a few QEII commem phosphors.	\$750
54	/	GB 1840-2017 simplified mixed mint & used colln in 3 Davo standard albums. Earlies mostly used, then mixed mint & used to GVI period. QV good range of used, incl 1840 1d Black 3 margins & 2d 4 close margins (cat £1350), 1847 1/- imperf SG 55 cut square 1 margin (cat £1000), 6d wmk error SG 97c (perfs trimmed 1 side, cat £2400), 2/- brown (trimmed perfs; cat £4250), 1880 1/- orange-brown SG 151 (£550). Total QV cat approx £20,000 simpl. Thereafter, near complete used (simpl) EVII-GVI, incl EVII used to 10/- (also £1 very heavy cancel), GV to £1 SG 404 GU (£1 cat £1600), £1 PUC GU (£550). QEII virtually complete LH mint 1950s-2017 (decimals cat approx £3000 from 1980).	\$2,500
55	/	GB 1840-2000 colln of 2250+ mostly used in large s/b. Noted: 1d Blacks x 2 (DF, 4 margins, plate 1b, red MC canc, small tear & LL, 3 margins, plate 6, red MC canc); 2d Blue (HF, 2 margins, plate 1, red MC canc, small cut into bottom); 1856 4d no corner letters, wmk medium garter GU; 1856 4d vermilion, plate 15 GU; 1883 set of 10 (no 9d) GU/FU; 1883 10/- ultramarine FU; 1918 Seahorses BW printing 5/- FU & 10/- GU (short perf). High cv	\$750

REMEMBER WE TAKE ALL MAJOR CREDIT CARDS

56	/	GB 1858-2000 colln in 3 Davo hingless albums with slipcases (pages complete from 1840), very sparse QV & EVII, no Officials & few Dues. From GV reasonably complete, no key items but good coverage QEII Wildings & early QEII Commem phosphors etc. Machins & Regionals appear complete. Also small s/b, apparent dupn but also fills a few gaps. Nice lot for continuation.	\$750
57		GB 1891-1911 Railway letter stamps about 400 on annotated pages, incl blocks, sheets, a few on piece. Incl a Dealer's circuit book with about 250 North Eastern Rly 2d unused (page adherances), wide range of railway co's covered - vendor states 102 of the 108 that existed are represented.	\$600
58	M*	GB c1912-1960s accum of plate control selvedge markings on blocks or strips. Incl about 100 GV defins - mostly as corner strips of 3; about 75 GVI blocks incl many commems & about 75 QEII commems & Wildings block. A few creased. Mint/MUH.	\$1,250
59	M	GB 1952-70 QEII specialised mint colln in L/H hingeless album. Good coverage Wilding varieties & phosphor commems. Also regionals (no Dues).	\$300
60	/	Germany c1955-2020 extensive colln in 3 x 48 page (24 leaves) L/H s/bs. West Germany to 1990. Good seln to c1970 mostly used, then appears complete incl m/ss mint (apparently all MUH from mid 1970s). High cv.	\$3,000
61	*	Germany 1990-Sept 2010 near complete colln in Schaubek hingeless album, incl 58 m/ss. Weighs 3.4kg. SG cat £4150. MUH.	\$1,500
62	C/	Germany 1850s-1960s varied colln with interesting covers & p/cs incl earlies from States (eg Hanover SG 1 on entire). Assorted postal stationery & large quantity inflation era issues mostly in sheets incl on cover. Total 200+ covers & well over 1000 stamps.	\$725
63	C/	Germany-West 1949-c1970 extensive colln of mint (earlier issues), used, covers & FDCs in 4 Warwick loose leaf albums. Incl most early issues LH mint & FU, some on FDCs or PU covers (some to NZ), even PU blocks of scarcer stamps. Later issues (from late 1950s) appear virtually complete (MUH & FU). Generally fine throughout. The 1st album alone (to c1959) cat approx £7000. Mint/MUH/used.	\$2,300
64	U	Germany-West 1951-2010 colln near complete (from 1951), in 3 Leuchtturm hingeless albums, incl 77 m/ss. Weighs 8.2kg. SG cat £5100. GU/FU.	\$2,000
65	*	Germany-West 1963-89 near complete colln in Schaubek hingeless album, incl 19 m/ss. Weighs 2.5kg. SG cat £1730. MUH.	\$750
66	/	Germany-West 1966-2001 MUH & used in 6 Lindner albums, appears complete plus a few extras.	\$525
67	U	Germany-West Berlin 1948-90 used colln in printed Lindner album. After scattered 1948 ovpts, appears complete excl 1949 m/s, 1953 Wilhelm Church, 1977 booklet panes. 1949 UPU 1m & 2m each shortened corner perf. High standard.	\$525
68	*	Germany-West Berlin 1962-90 near complete colln in Schaubek hingeless album, incl 5 m/s. Weighs 1.8kg. SG cat £1080. MUH.	\$500
69	/	Germany-East 1949-76 comprehensive colln of mint, used & FDCs (many PU to NZ) in 6 packed old springback albums. Noted some scarce earlier items, eg: 1950 Debria Exbn m/s SG E29a cat £225 (on FDC to NZ), 1951 China Friendship set SG E43-45 mint (50pf paper adhesions) & FU (cat £450), 1953 Marx m/s set SG E111a mint (cat £250). The 1st album alone (to 1955) cat approx £4000. Appears fairly complete from late 1950s. Mostly complete sets present. Many thousands of stamps. High cv. Mint & used.	\$1,500
70	U	Germany-East 1949-60 used colln in old Leuchtturm (Lighthouse) springback hingeless album virtually complete missing a few, especially key earlies but noted 1950 Debria m/s, Polish Visit & China Friendship sets.	\$500
71	/	Germany-East 1949-90 collns: 1976-90 in Davo standard album mostly complete to 1980, then reasonable coverage; 1949-80 colln on pages, nearly all used incl a few better earlies; misc Germany colln on pages (mostly East Germany). Mint & used.	\$850
72	/	Germany-East 1978-90 colln of 700 diff used in Schaubek hingeless album, also incl 50 MUH. Weighs 3kg. SG cat £580. MUH/used.	\$250
73	/	Gilbert & Ellice Isl 1911-70 virtually complete mint colln. Noted: 1911 GV ovpt set; 1912 GV short sets mint & FU to 5/-; 1939 Picts; 1940 Dues (1/- & 1/6d FU); 1949 £1 Silver Jubilee; 1956 Picts x 2 sets etc.	\$400
74	/	Greece c1861-1930s colln/accum in 2 dilapidated s/bs etc. Very untidy but noted 200+ imperf Hermes Heads (many 4 margins), also seln later issues incl Postage Dues & random seln other old European stamps. Maybe 800 stamps. Huge cv.	\$750

SEE THIS CATALOGUE ONLINE AT [WWW.MOWBRAYCOLLECTABLES.COM](http://WWW.MOWBRAYCOLLECTABLES.COM)

75	/	Iceland 1873-1974 virtually all used colln in Schaubek springback album (pages complete). Noted: 1876 series noted 16a x 2, 20a mauve (mint), 20a blue x 2 & 40a mauve; 1902 short set to 2k (5a mint); 1907 short set to 1k; 1911 set; 1912 short set to 50a; 1925 20a red, 2k & 5k; 1921 various high cv surcharges but "Toller" cancels; 1930 Millenary set (no 50a, 2k, 10k - 5k mint), virtually complete from early 1930s; back of book incl 1873 4s green official o/c CTO.	\$1,000
76	/	India 1854-1960 specialised colln on pages, good coverage all eras, mix mint & used. Noted used: 4 imperf (mixed cond), 70+ other QV (incl officials & a few mint); GV to 25r; EVII various to 25r etc. Mint: GV 15r; 1937 GVI pict to 25r (no 15r); 1948 Gandhi set; 1949 Picts short set to 10r; 1955 Picts set; EVII 2r, 5r, 10r officials; also various Indian Overseas Forces set. Rather untidy but high cv.	\$1,100
77	/	Ireland 1922-c2000 extensive colln in 2 large s/b, some FDCs, dupn. Noted 1922 2/6d to 10/- Seahorses mint. SG cat £2000+ to 1970 & £350 1995-2000. Mint/MUH/used.	\$750
78	/	Italian Colonies/Territories c1890s-1940s collns on Hagner identified by Sassone nos & cat vals. Noted: good selns Eritrea, Fiume, Cyrenaica, Tripolitania, Somalia, Libya, Italian East Africa, Venezia etc. Priced to well over €1500. Rather untidy & mixed cond but interesting seln. Probably about 400 stamps.	\$500
79	CU	Japan 1880s-c1970s postmark colln (formed in NZ) on 25 pages. Incl 138 stamps or pieces, 11 post-cards (1890s-1930) & 2 1970s ship mail covers. Mostly pre WWII period. Diff types clearly described, incl many rubber "Roman letter" types used at 8 major offices on foreign mail (from 1880s), various early "bota" (obliterator) types, roller cancels (from 1930s), special small "uncancelled mail" hand-stamps, Japanese POs abroad (noted "I.J.P.O. Shanghai" cds CTO 1893 on p/c), & a few seapost cancels. Impressions vary from partial to complete (many are fine). A few items have been removed. Interesting lot.	\$650
80	/	Kenya, Uganda, Tanganyika 1903-c1975 range in s/b & various loose on pages etc. Noted EVII 2R mint, GV 10/- used. SG cat £1900+. Mint/MUH/used.	\$375
81	M*	Kiribati 1979-2009 apparently complete mint in 5 albums (incl a few especially m/ss MUH). Incl: m/s's, officials, & also noted Specimen stamps. Weight 4kg.	\$400
82	/	Malaysian States 1867-1980s colln of 2100+ mint & used in s/b. Noted: Straits Settlements (1867 4c on 1a & 24c on 8a GU/FU both with some straight edges, 1880 5c on 8c mng; 1912 \$2 (x2) & \$5 (XL) FU; 1937-41 set (no 2c green, 25c, 30c) mint; Johore (1909 set of 21 FU); Ketah (1937 short set to \$1 mint & used + \$5 MUH, 1950 set (no 30c) mint, 1957 set of 11 mint; Kelantan (1937 6c, 10c, 50c & \$1 mint, 1951 set of 21 mint); Perlis (1951 set of 21 mint); Sarawak (1888 set of 14 mint but many toned, 1950 set of 15 mint. Also incl North Borneo incl 1950 \$5 & \$10 mint. SG cat £6000 (+ fiscals).	\$1,500
83	/	Miniature sheets c1950-2015 accum of approx 1600 of which about 1000 are used. Dupn, no NZ seen.	\$1,000
84	/	Morocco Private Post Offices 1891-1911 mostly mint. Annotated re routes & origins on 26 Hagners; approx 375v, mostly singles & some dupn with a few forgeries noted, on 28 additional Hagners. Also incl "The Local & Private Posts of Morocco" by Jean Haik pub 1997. Catalogue prices in French Francs [then US \$1 = FF 5.25]. Colln incl (priced!) forgeries is catalogued at FF 51,600+ (or US \$9,800+ then). Recent internet prices make this valuation appear conservative.	\$2,300
85	/	Netherlands 1852-1980s average quality colln in s/b incl 1906 Tb used. Additionally 1951 Airs 15g & 25g MUH & FU + 15g mint. These Airs alone cat £1950.	\$750
86	/	Netherlands 1852-2008 very comprehensive mixed mint & used simplified colln in 4 Davo hingeless albums. Appears very neat complete either mint or used, in generally very good to fine condition. Vol 1 (to 1980) cat £9500. Noted 1852 (4 margins), 1864, 1867, 1869, 1872, 1876 sets all used (mostly FU), 1913 Independence set used (SG 225, 10G is FU, cat £1100), 1920 SG 236 mint, 237 FU, 1923 Queen's anniversary set FU & almost all other sets complete to 1980 (MUH from 1970). Thereafter, virtually complete MUH (Vols 2 & 3). Vol 4 contains "back of book" issues. Total SG CV approx £14,250.	\$5,000
87	U	Netherlands 1852-1999 comprehensive colln of used in Imposta (to 1997) & Davo hingeless (1998-9) albums. Noted 1852 & 1864 sets; 1867 50c; 1869 1½c & 2½c, 1872-88 set of 11 (minus 22½c), 1893 2g50; 1913 short set to 5g; 1920 both 2.50 on 10g surcharges; 1923 2½g, 1940 surcharge set of 18; 1942 Legion Fund m/s x 2; 1946 Queen Wilhelmina 2½g, 5g & 10g; 1951 25g Air. Also incl 1884 postal receipt set of 7. Weighs 3.8kg. SG cat £7500+. Used.	\$3,000
88	*	Netherlands 1864-1991 comprehensive colln of MUH in 3 Linder hingeless albums (near complete from 1898). Noted 1864 5c (mint toned), 1898 (15c brown, 50c both colours), 1913 2½g, 1927-7 2½g & 5g, 1940 surcharge set of 18, 1942 Legion Fund m/s x 2 (7½c tone spots), 1946 Queen Wilhelmina 2½g, 5g & 10g, 1949 Queen Juliana set to 10g. Weighs 7.6kg. SG cat £10,400+. MUH.	\$5,000

**BIDS BELOW 70% OF ESTIMATE WILL NOT BE CONSIDERED**

89	/	New Zealand 1850s-1931 seln on 2 Hagners, used: FFQs 2d imperf & 12 perf (mixed cond); Auckland Exbn set (+ extra ½d & 1d); 2/- Milford & 5/- Mt Cook official; 3/- Admiral & Red & Blue Boys. Mint: 8d, 1/- SSF; 4½d GV, ½d GV grossly misperfed (no gum), 1/- EVII official; Auckland Exbn set; 5/- Mt Cooks ordinary & official; Christchurch Exbn set (6d MUH very light gum creases); 1d Universal block of 8 (some gum creasing).	\$1,000
90	/	NZ 1850s-1958 mixed mint & used simplified colln in large s/b with Health & "back of book" issues on 8 Hagner pgs. Noted (all used) FFQ imperf set (& shades of 3), FFQ perf set (& 5 shades), FSF set & shade of 2/- (5/- dubious cancel), SSF set, 1898 set (5/- FU), 1907-9 official set to 5/- FU (5/- CTO). Then Christchurch Exbn set mint (6d creased) & FU, Auckland Exbn set mint, GV recess set mint & used, official set used, Admirals 2/-, 3/- MUH & FU, 2/- official MUH & FU, Victory set mint & used (1/- creases). From 1925 Dunedin Exbn, appears virtually complete MUH & FU, incl officials (1958 2d on 1½d "Stars" MUH only). Health complete (mint & FU 1929-33, MUH & FU 1934-57), Life Ins 1891 VR & 1905-30s no VR sets used, 1899 Postage Due set FU (several CTO) & later sets mint & FU, Arms to 10/- used (incl 7/6d), 1d KEVII Land & 1d Victoria Land FU. Generally nice cond. Cat approx \$24,000 simpl.	\$5,000
91	/	NZ 1850s-1967 mixed mint & used simplified pre decimal colln on hingeless album pages. Noted: FFQ (mixed cond) imperf 1d, 2d, 6d & perf set 1d-1/- used, FSF to 2/- used, 1898 Pictorial set mint (incl nice 5/- London Print), 1907 official 2/- mint, Christchurch & Auckland Exbn sets mint. Fairly complete either mint or used from 1900s (incl 1905 Life Ins 2d red-brown no VR GU/FU, 1958 2d QEII Stars error LH mint). Health's incl 1931 set MUH (1d faint gum tone spot), 1957-66 m/s sets complete mint. Some minor faults. Mint & used.	\$2,500
92	/	NZ c1855-1967 accum in s/b much dupn. Noted: FFQ mixed cond (imperf x 7, perf x 18); good range all issues - several thousand stamps. Also Emperor album: Health, Xmas (both to 1991), officials, Life Ins, Dues, QVLTs, Arms etc - many hundreds stamps. High cv.	\$1,000
93	U	NZ 1855-1993 used colln of defins & commems in Warwick multi-ring album (a few m/ss mint). Noted: FFQs imperf x 11 incl SG 97 (nearly 4 margins), SG 16 (reasonable) & SG 17 (corner repair); perf x 14 incl good to fine basic set of 11; SSF set; Victory & Dunedin Exbn sets; 1931-4 Airs; virtually complete from 1935 (no 2d QEII Stars error).	\$1,500
94	U	NZ 1855-1990 used colln in 2 Warwick peg albums (incl a few mint items incl m/ss). Noted: FFQs mixed cond imperf x 6 & perf x 12; SSF set; EVII set; Victory set; defins & commems virtually complete from 1935 (no 2d QEII Stars error); 1929-30, 1932-4 Health's; good range back of book.	\$1,000
95	/	NZ 1855-1990 used colln on Tasman pages (a few incl m/ss mint). Noted: FFQs imperf x 7 & perf x 12 (most with faults); FSF set (2/- GU, 5/- GU, short corner); SSF set; 1898 Picts (5/- fiscal); 3d Christchurch Exbn (mint); EVII & GV sets; Victory set; 4d Dunedin Exbn; 1931-4 Airs; commems & defins virtually complete from 1935 ; 1929-34 Health; Life Ins 1891 3d VR, 1913 set (2d chestnut tone spot); officials 2/- Milford, 8d GV official (parcel pmk), 2/- Admiral etc.	\$1,500
96	/	NZ 1855-1998 colln of 1600+ diff mint (MUH from 1946) & used on Hagner pages. Noted FFQ x 11 (incl imperf 6d black-brown 3½ margins FU & p12½ 4d yellow VFU), SSF set FU, GV 4d violet 2 perf pair block of 4, Christchurch Exbn 3d MUH, 1/- Pigeonram inscription mint. Also incl postal stationery p/cs x 13 diff & 2 flight covers. Jury cat \$7000+.	\$1,000
97	/	NZ 1855-1981 mostly complete colln in KABE hingeless album. Noted: FFQs 3d (accidental imperf) mint, 4d rose MNG; QVLT range (9v) to £1 mint; 1891 Life Ins set; 1898 Postage Dues set mint. Some pgs & some stamps toned especially amount earlies. From c1940 stamps appear mostly MUH, with a few FFQs used etc. Jury cat \$50,000+. Mint/MUH/used.	\$11,500
98	/	NZ 1855-1984 colln of mint & used in Premier NZ album, mainly mint from 1931. Noted FFQ (3 imperf, 7 perf), FSF 5/- FU with short corner, SSF set FU, Christchurch Exbn set mint (3d with adhesion), GV 8d official VFU, Life Ins VR set (6d toned, 1/- with blunt corner) & no VR 2d chestnut FU.	\$1,000
99	/	NZ 1855-1976 complete used incl back of book colln in Premier album (except only triangular pigeonrams & no ½d Victoria Land) & all items (except a few m/ss) in mounts. Many of key items with faults/fiscal cancels etc. FFQs reasonable cond. Noted in good cond: 2/-, 5/- FSF GU; 2/-, 5/- QVLT officials; 1891 Life Ins VR set (6d, 1/- GU); 1905 Life Ins set (2d chestnut GU); 1899 triangular pigeonrams; 1899 Dues set; 1907 Pict officials set; Christchurch Exbn (3d, 6d CTO); 1d EVII Land; Auckland Exbn set (6d CTO); Red & Blue Boys (Blue Boy GU); Arms to £5 (35/- fiscal punch hole & £3.10 & £4.10 fiscals, £5 corner crease); 22/- & 35/- Arms FU; 5/- Arms official GU; 2d QEII Stars error VFU; 1957-77 Health m/ss (incl both 1957 sets) all with fine contemporary cdss. Very high cv.	\$6,500

100	/	NZ 1855-1979 virtually complete mix mint & used colln in Premier album, virtually all in mounts. Some mixed cond/fiscal cancels etc. Noted in good cond FFQs imperf set of 6 (all about 3 margins) & perf set of 11 GU/FU (4d rose small back thin); 2/- & 5/- FSF GU/FU; 3d, 6d, 1/- Life Ins no VR GU/FU; 1905 Life Ins set GU/FU (2d chestnut FU); 1/- Due; 5/- Mt Cook official; 1d EVII Land; EVII incl officials set; 8d GV official, Red & Blue Boys; 1/3d lemon, 7/6d, 9/-, 12/6d, 15/-, £2 Arms FU (£4.10 fiscal); 5/- Arms official GU/FU; 35/- surcharge Arms (fine fiscal). Mint: 5/- QVLT official; 8d, 10d, 2/- Dues; Christchurch Exbn set; 1d Victoria Land (MUH); 3d, 6d Auckland Exbn; 2/- Admiral official; 2d QEII Stars error (MUH); Health m/s complete (a couple FU). High cv.	\$5,000
101	/	NZ 1855-1988 colln on Premier album pages, mostly used. Noted used: 3 imperf & 10 perf FFQs, mixed cond; SSF set; 2/- Milford official; 8d GV blue; 2/- Admiral Jones; 2/- Admiral official; 7/6d, 12/6d & £5 Arms (minor faults); 6d Postage Due; 3d, 6d VR Life Ins; 1913 set (no 2d chestnut); 1d EVII Land. Mint: ½d, 1d, 3d Christchurch Exbn; 1/- EVII official; 8d, 9d GV officials; 1/- Victory, Dunedin Exbn set; Red & Blue Boys (minor gum tone); 1931-4 Airs; 2d QEII Stars error (MUH); 2/- QVLT official; 1d Victoria Land. Also noted good range Arms incl £2.10, £3.10, £4.10 with revenue cancels (not punched). Also many other high CV items but mixed cond.	\$1,500
102	U	NZ c1855-c1990s used colln/accum in good cond L/H s/b. Noted: 13 FFQs (incl good 4 margin SG 38); FSF to 1/-; SSF set; 1898-1907 Picts (5/- fiscal); 2/-, 5/- Pictorials officials FU; 3/- Admiral; Red & Blue Boys (2) (Red Boy small back thin); GV recess officials set (9d Parcel, 8d FU); 1899 Dues to 5d (5d x 2) & 8d; Express Delivery Fernleaves x 3; 2/- QVLT official; 11/- Arms etc. About 1500 stamps.	\$1,000
103	U	NZ 1855-1995 colln on pages. Noted: FFQ imperf x 8, perf x 20 incl 4d rose FU; FSF to 2/-; SSF set & advts x 15 incl one on 1/-; 1898 Pictorials (5/- fiscal) & officials sets (5/- small corner repair); Christchurch Exbn set (CTO cancels); Auckland Exbn set (CTO cancels); 1958 QEII 2d Stars error VLH mint. Incl Health 1929-94: Red & Blue Boys (minor faults) & 1959 3d blk of 4 with red colour shift 1mm+ downwards (MUH/toned); & Express Delivery Fernleaves. Used.	\$2,300
104	U	NZ 1855-1989 colln of used in 2 Davo hingeless albums. Noted FFQ imperf x 14 (incl 1d orange no wmk, 6d red-brown NZ wmk) & perf x 18 (incl 4d rose, 4d yellow no wmk), 3d Christchurch Exbn, Healths complete 1957-77 m/s sets (no 1961-2, 1964-5 or 1967) some with messy cancels, postal fiscals (1d blue, 6/-, 7/- & 9/-), Arms (1/3d lemon, 7/6d & £2), King Edward VII Land, Officials (1898 2/-, GV 8d brown & 2/- Admiral). Weighs 3.7kg. Jury cat \$12,300. Used.	\$1,500
105	U	NZ c1860s-1930s used seln on stockcards. Noted: 2/- FSF (reasonable cond); Red Boy x 3 & Blue Boy; FFQs x 17 - 9 imperf & 8 perf (mixed cond).	\$750
106	U	NZ 1860s-2012 simplified used colln of approx 2700 diff (incl many m/ss & setenant blocks). Gaps in earlier issues (from 4 perf FFQs to 1/-) but fairly complete simplified from 1930s. Noted 2004 ANZ Bank early CALs set of 3 FU on cover & MUH, plus extra 2 MUH sets in ANZ folder.	\$600
107	U	NZ 1862-1990 colln of used in SG NZ album. Noted: FFQ 4d rose, FSF 2/- & 5/- FU, Christchurch Exbn set to 3d FU; 1931 Red & Blue Boys FU; 1957 Health m/s sets FU; 1899 Postage Due set (no 8d) FU; Pictorials Official 2/- & 5/- GU/FU, 2/- Admiral official FU, Life Insurance 6d VR & 1/- FU. Near complete except FFQ imperf; 1935 Pictorials, QVLT & Arms, Life Insurance no VR & m/s. Ideal for continuation/completion.	\$2,500
108	U	NZ 1870s-1990s used colln in Davo std album. Noted 8d SSF, 5d advt, 2½d Wakitipu, GV 8d blue x 5, 3/- Admiral x 2; 1925 Dunedin Exbn set, Red & Blue Boy, 2/- QVLT official, 2/- Admiral official, 1935 9d Panel green official etc. Cond varies, 1000+ stamps.	\$750
109	/	NZ 1873-1967 colln in L/H hingeless album with slipcase (pages complete from 1855); rather sparse earlies but noted specialised 1935 Picts & very good range GVI defins (incl extra pages) noted coil pair sets, plate blocks, shades etc. Mix mint & used. Over 1000 stamps.	\$1,250
110	/	NZ 1873-1969 defins & commems mint & used seln on Hagners. Noted mint: Newspaper x 11 (mostly early issues); 6d Kiwi original design official; 6d Christchurch Exbn x 2; EVII set; 8d GV official; GV recess set; 2/- & 3/- x 2 Admirals (all Jones); 1920 Victory x 2 sets; Dunedin Exbn set; 1931-4 Airs; 1940 Cent officials set; 1954 QEII defins incl officials sets x 2; 1960 Picts set. Used: SSF x 3 sets; 1920 Victory set; 1935 Picts officials etc. Many other good cv items but minor toning, no gum etc. High cv.	\$3,000
111	/	NZ 1873-1959 mint & used colln on pages & packet. Noted mint: 8d SSF (with advt, also flaw on neck); 1898 6d green Kiwi; 6d Kiwi reduced x 2; 7 GV 2 perf pairs; Dunedin Exbn set; 1903 Express Delivery Fernleaves; 2/- Admiral official; 1940 Cent officials; 1908 1d Universal official booklet pane; QEII 3d, 8d, 1/6d plus 2d & 3d large figures set of coil pairs; 2d QEII Stars error (MUH); seln 1960 Pictorials plate blks to £1. Used: 2/-, 5/- each x 2 FSF (fiscal cancels); 8d GV official (GU); 1891 Life Ins set; 1934 Air cover (with 1931 set); etc etc. Plus many more good items but affected by toning. High CV.	\$3,000

112	/	NZ c1873-1968 specialised colln in FG album, mix mint & used. Noted mint: 3d SSF; 1898 Picts 2d, 2½d Waki & Waka, 8d & 9d; EVII set; 7½d, 8d blue, 8d brown GV; 2d QEII Stars ovpt error; 1929, 1930, 1932, 1933, 1934 Health; ½d, 1d, 3d Christchurch Exbn; ½d, 1d Auckland Exbn; Victory set. Used: SSF set (no 8d) & 1907 Picts reduced. Some other good vals but these affected by minor toning. Good CV.	\$750
113	M*	NZ 1873-1980 mint/MUH colln on pages. Noted mint: 1907 Picts officials (incl both 6ds); 1d Universal pane official (position 10); 1907 Picts reduced; EVII set; GV recess set; GV Official set (8d x 3); Admiral official; 1935 Picts officials. MUH: 1935 Picts plate block set to 3/- (9d small only & as sheet no. block); 1954-63 QEII Picts to 10/-, redrawn set & officials to 3/-; 1970 Picts plate blocks 2/- COQK flaw x 2, etc. Also many other good early items but affected by cellulose hinges or wrapped in tight glassine packets.	\$3,000
114	M*	NZ 1873-9 mint (& some MUH) colln in Premier album. All individual stamps in mounts (but not m/ss). Noted virtually complete incl back of book (no QVLTs or Arms) but many minor faults. Noted in good cond: 2/- & 5/- FSF regummed; 1898 6d green, 5/- Picts; 1/- Pigeongram original issue; 10d, 1/-, 2/- Dues; 1907 Pict officials (5/- very light crease; ½d, 1d, 3d Christchurch Exbn; 3d & 6d Auckland Exbn; GV recess officials; Dunedin Exbn set; 2/-, 3/- Admirals (both Jones); 2/- Admiral official; Red & Blue Boys; 1938 GVI officials set; 1940 Centennial official set; 1954 QEII incl officials sets; 2d QEII Stars error (MUH); 1960 & 1967-8 Picts sets etc.	\$7,500
115	M*	NZ 1874-1975 mint/MUH colln in L/H hingeless album with slipcase (pages complete from 1855). Mostly complete. Noted: 1898 Picts short set to 1/-; EVII incl official sets; GV incl officials sets (8d Official MUH); Victory set (3d, 1/- MUH); Dunedin Exbn set; 2/- incl Official & 3/- Admirals; 1931-4 Airs; Arms to 6/- (incl 1/3d lemon); GVI incl officials sets; 1940 Cent incl officials set; 1954 QEII defines incl officials sets MUH; 6d Express Fernleaves. Plus other key items but minor faults/fiscal cancels etc.	\$2,000
116	M*	NZ 1874-1966 pre-decimal mint/MUH accum in envelopes (about 200). Noted: 3d FSF; 1d SSF x 24 etc etc. Envelopes annotated with No's & cat vals. The 1st 20 or so cat several \$1000s. Incl Life Ins.	\$750
117	/	NZ c1874-1940s specialised seln on annotated Hagners & pages, identified by SG No's. But also incl list supplied by vendor which incl CP No's & cat vals. Noted used: 1d FSF, p12½, invt wmk; 2d star wmk (a few sport perfs); 1d Taupo & approx 50 with re-entries/minor flaws etc; 1898 2½d Wakatipu x 2 re-entries (+ 1 mint); 9d Terraces x 2 reverse wmk (minor faults); 5d Otira re-entry; 7½d GV 2 perf pair; 2d GV litho wmk; 2d GV x 4 reverse wmk; 3/- Admiral Cowan x 2; 8d GV official light crease; 1d Field Marshal official no dot var x 2; 7/6d, 8/- Arms. Mint: 6d Kiwi original x 2 (1 MUH); ½d Mt Cook mixed perfs; 5/- Mt Cook; 2/-, 3/- x 2 (both papers) Admirals; 2/- COQK flaw x 2 (MUH) etc etc.	\$2,800
118	R	NZ c1880s-c1950s cinderellas & various revenues in s/b. Noted: WWI War seals Poverty Bay x 2, Greymouth x 2, Otago & Auckland x 9; 1d Express Freighter (red); Honey seals x 40 (incl round lids x 2 & 5d on 2½d black); Christchurch Exbn labels set & extras (No 6 damaged as usual), Beer Duty x 5 (2 only in reasonable cond); good range Lands & Deeds to 20/-; & Law Courts to £1; 1d Fruit Inspection Fee vert block of 6 MUH.	\$1,000
119	/	NZ c1880s-c1980s misc accums/collns in 6 s/b bundles of pages, stockcards, packets etc. Most value in "back of book", ie: Life Ins (noted 1891 VR set, 1/- a little toned), Wage Tax stamps (virtually complete except only several key wartime ovpts), individual items noted 8d SSF advt mint; 1898 Pict unaccepted design (Mt Tarawera); 1906 Christchurch Exbn labels set (No 6 damaged); EVII officials set x 2 mint.	\$2,500
120	M*	NZ c1882-1940 mint/some MUH seln on 2 Hagners. Incls SSF 2½d & 8d horiz pair, 2½d imperf plate proof; 1898 Picts London prints; 2½d plate block of 4 (MUH, 2½d Waka (MUH), 4d Terraces x 2 (1 MUH); 3d, 8d; later Picts 2½d Waka block of 4 (MUH some tonespots) 5d, 6d, green single & block of 4, 9d & 2/-; 1920 Victory 1/- & 3d horiz imperf plate proof pair, 1935 2/- Cook & 3/- Egmont single wmk; 1940 6d Cent official (MUH).	\$1,100
121	M*	NZ 1882-1967 simplified mint colln (some MUH) in L/H s/b. Appears complete in basic defines & commems. No Health or "back of book" issues. Noted QV SSF; 1st Pictorials set incl 2 shades of 2d Pembroke & 3d, 6d, 1/- reduced size; 1906 Christchurch & 1913 Auckland Exbn sets (6d Chch MUH), EVII & GV sets; Victory set; Dunedin Exbn set MUH, GV 2/-, 3/- MUH; 1931-4 Airs set in pairs; 1940 Centennial set MUH; 1958 2d QEII Stars error MUH. Issues 1930s on complete mint or MUH. Very clean cond. Cat approx \$10,500.	\$3,000
122	M*	NZ 1882-c1990s mint/MUH colln/accum in 3 very good cond L/H s/b. Noted: 5d SSF; 1900 6d Kiwi red (MUH); EVII officials set; Auckland Exbn set; 6d Victory; 2/- Admiral official MUH (darkened gum); Red & Blue Boy; 7d Trans Tasman MUH; 2/- QVLT official; 6/-, 10/- Arms; 5/- Arms vert official; 8d P Due; 1d Victoria Land (MUH); 1d, 2d Railways Newspaper stamps (MUH); plus many Health m/ss & plate blocks. About 2500 stamps.	\$2,000

123	M*	NZ c1890s-1930s mint/MUH seln on stockcards. Noted: Red & Blue Boy; 2/-, 3/- Admirals (Jones); 2/6d to 10/- QEII (MUH); 2/- Milford & 5/- Mt Cook x 2; 1d blue Life Ins no VR (no gum); 2/- QVLT official (MUH); 1935 Silver Jubilee x 4 sets; Christchurch Exbn set + extra 6d (no gum); Dunedin Exbn x 2 sets; 1929-30 Health's each x 2 (MUH); good seln 1932-4 Health's etc etc. Total several hundred stamps.	\$2,000
124	M*	NZ 1898-1967 mint/MUH colln complete defins & commems (no Christmas, Health, Life Ins, officials etc). Fine condition except 5/- Mt Cook unused no gum. GV set faults. Most MUH from 1935 on. Jury cat \$5700 (excl faulty).	\$1,750
125	M*	NZ 1898-2010 mint/MUH colln in 4 s/bs. Cv to 1977 is approx \$6000 (incl 5/- Mt Cook no gum). 1978-2010 has face value of \$2500+ according to list supplied. Good value at estimate.	\$2,000
126	/	NZ c1898-1970s colln on pages & Hagner, rather untidy but noted good items incl used: Red & Blue Boys; 1931-4 Airs 3d p14 x 15, 5/- Mt Cook. Mint: 1932-34 Health; Victory set; Dunedin Exbn set MUH block of 4 (incl 4d "POSTAGF." flaw); 1931 Airs MUH (incl p14 x 15); 1960 Pictorials (MUH); 8d GV Official (no gum). Plus many other useful items.	\$2,000
127	M*	NZ & Dependencies 1898-1974 colln in Scott album (pages from 1855). Noted 2/-, 3/- Admirals, GV defins. Mint/MUH.	\$575
128		NZ 1899-1998 flaws/errors misc mint/used colln on pages (annotated) & 2 sheets. Noted: 1d P Due no dot between "N" & "Z"; 1d Dom x 7 listed flaws plus several others; plus 18 minor flaws/invtd wmkts etc.	\$250
129	/	NZ c1900s-60s flaws colln on annotated pages. Noted: 1941 2d on 1½d GVI reinserted "2" (R10/10) in positional block of 4 (2 of normal stamps toned) MUH, CP M5az, cat \$1650; 1960 2/- Rock Drawing "gutless wonder" mint; plus about another 50 minor flaws incl some non NZ but some minor toning.	\$750
130	/	NZ c1903-67 Ross Deps, Airs & Express Delivery accum on pages. Noted: 1d Victoria Land x 2 MUH; Ross Deps x 12 covers incl 1967 decimal set pictorial cover; 1931 3d, 7d TT Airs MUH; 3d, 4d x 2, 7d TT mint; 1935 mint seln shades, Express Delivery Fernleaves x 14 used various printings.	\$750
131	/	NZ 1906-66 commems pre decimal colln on nicely written up pages - mint & used. Noted mint: 3d, 6d Christchurch Exbn (each light crease); Auckland Exbn set; Victory set; Silver Jubilee set etc. Used: ½d, 1d Christchurch Exbn vert pairs GU/FU; Victory set; 4d Dunedin Exbn; Silver Jubilee set etc.	\$600
132	U	NZ 1934-94 fine used colln appears complete, simplified Airs, officials, commems & defins (no 2d QEII Stars error) plus Health 1959-2010 (no m/ss). Very nice presentation & condition.	\$300
133	*	NZ 1935-94 colln of 135 complete/partial stamp booklets, dupn & mixed cond. Noted: 1935 2/- x 2 partial (3 x 1d Kiwi pairs); 1936 1 partial (1d Kiwi complete pane); 1938 2/- & 2/3d x 2 complete & 1 partial (complete panes). (FV decimals \$286). MUH.	\$375
134	M*	NZ 1935-68 defins & officials in 2 large L/H s/bs with plate blocks, singles, multiples, dupn, variable condition. Vendor STC \$18,700+ - as single stamps (2002). Mint/MUH.	\$1,900
135	C	NZ c1938-52 colln of 42 covers nearly all with GV defin stamps. Noted: 1½d scarlet x 2 special FDCs (boxed inscription "First Day Cover / 1st February 1944") with diff Auckland cdss; 6 official commercial covers; 4 diff postal stationery p/cs (1 unused); 1947 Pict (Maori Chief Tukino) "Garrison" cover etc.	\$300
136	M*	NZ 1938-1970 colln of coil pairs. Incl GVI 6d rubber stamped set of 19 (CP cat \$475), 9d printed set of 19 + duplicates (CP cat \$864), QEII large numeral 6d x 3 diff coils pair nos. reading downward, 1960 1/9d x 13 coil pairs (CP cat \$780) etc.	\$950
137	U	NZ 1953-80 used colln in Seven Seas album, all stamps in clear mounts. Complete except 2d QEII Stars error, incl all Health m/ss & Ross Deps.	\$750
138	*	NZ 1967-2012 colln of decimals in Kabe/Leuchtturm hingeless albums with 4 slipcases. Virtually complete incl m/ss & Ross Dep. Face value \$2500+ (cost of albums \$4000+). Weighs 16.6kg. Jury cat \$8500. MUH.	\$3,500
139	*	NZ 2000s-10s decimal stamps mostly as complete sheets/sheetlets with unit fv nearly all \$1 or more and no fv less than 50c. Incl a few imperf sheets. Total fv \$6000+. MUH.	\$3,000
140	*	NZ 2000s-10s decimal stamps mostly as complete sheets/sheetlets with unit fv nearly all \$1 or more and no fv less than 50c. Incl a few imperf sheets. Total fv \$4000+. MUH.	\$2,000
141	*	NZ 2000's-10s decimal stamps mostly as complete sheets/sheetlets with unit fv nearly all \$1 or more & no fv less than 50c. Incl a few imperf sheets. Total fv \$3000+. MUH.	\$1,500
142	*	NZ 2000's-10s decimal stamps mostly as complete sheets/sheetlets with unit fv nearly all \$1 or more & no fv less than 50c. Incl a few imperf sheets. Total fv \$2000+. MUH.	\$1,000



143	/	Niue 1902-53 mint colln virtually complete incl m/ss (a few MUH). Noted: 2½d Wakatipu "½" & "P" spread var; 1902 ½d invtd ovpt (SG 3b) (RPSL cert, 1999); 3d Huias x 6 incl block of 6; 6d Kiwi & 1d Kaka each x 2; GV ("Niue" ovpts) 2½d, 3d x 2, 6d & 1/- all as 2 perf block of 4s; 2/- to £1 QVLT (£1 minor tone); 1d 1920 Pict horiz plate proof strip of 3; 1920 Picts x 4 sets (plus FU sets); 1931 2/6d - £1 Arms set x 2 (£1 x 1 FU); 1932 & 1944-6 Picts good seln incl some blocks; 1941-67 Arms 2/6d to £1 set x 3 (incl 2 sets FU except £1 x 1 mint) etc.	\$1,350
144	/	Niue 1967-2021 apparently complete incl m/ss mint (some MUH incl m/ss) in 9 albums. Noted 1967 Arms p11 sets FU & mint. High cv. Weight 7+ kg.	\$850
145	U	Norway 1855-1950 used colln on pages & 1 Hagner with 2 x SG 1 - FU 3 margins & GU 4 margins; SG 4 GU/FU from Bergen; & various singles & sets, dupn, some mixed condition. SG cat £4000+.	\$950
146	U	Norway 1855-c1940 tidy defins used colln in 24 pg (48 leaves) s/b. Good coverage all issues. Noted 1855 4sk x 2 (1 x 3 margins, 1 x 2); 1856 2sk x 4, 3sk x 4, 4sk x 27 & 8sk x 13; 1863-4 Arms 2sk x 3, 3sk x 4, 4sk x 19, 8sk x 5, 24sk x 2 (1 unused); 1867-8 Arms 1sk x 7, 2sk x 14, 3sk x 2, 4sk x 17, 8sk x 10; 1871-5 Posthorns 1sk x 8, 2sk x 8, 3sk x 18, 4sk x 5, 6sk x 6, 7sk x 6 etc etc.	\$3,000
147	M*	Pacific Isl 1870s-1980s colln of 1800+ mint & used. Noted: Fiji (1872 6c on 3d FU, 1874 2c on 1d FU cut square, 1938 GVI Pictorials set mint (less 2d Die I & £1) & FU; Gilbert & Ellice Isl 1940 Postage Dues short set to 6d MUH; New Hebrides 1911 short set to 2/- mint; Samoa 1932 NZ Arms ovpts 5/- mint & used, 10/- mint & £1 mint; British Solomon Isl 1939 GVI Pictorials set mint. Cat £4700+.	\$850
148	/	Pacific Isl c1890s-1940s selns mostly mint on Hagners incl: Cook Isl, Niue, Aitutaki, Penrhyn, Samoa & a few Fiji. Noted useful items incl some Arms & QVLTs. About 600 stamps.	\$400
149	/	Pacific Isl c1890s-1980s mostly mint colln on pages: Cook Isl noted good seln Makea & Terns; Pitcairn Isl apparently complete mint & used from 1940 into 1970s; Tokelau; Fiji noted good range GV to 5/-; then mostly complete 1935; Solomon Isl noted 1938 & 1956 Picts mint & Niue. Probably about 1500 stamps. High cv.	\$1,200
150	/	Pacific Isl 1900s-c2000 colln in 6 albums. Varied & wide ranging coverage. Particular strength in pre-1952 Papua & New Guinea. These alone cat over £1000. Also Cook Isl, Fiji, Norfolk, Tokelau etc.	\$725
151	/	Penrhyn 1902-29 mostly mint colln on 9 pages. Noted: 6d Kiwi x 3; 1/- Kaka x 2 shades; 3d, 6d, 1/- blocks of 4; 1903 Picts set on 1905 cover apparently sent "locally" (no actual address); good range all other issues incl 2½d GV 2 perf block of 4.	\$500
152	/	Penrhyn 1973-2019 apparently complete mint colln in 5 albums (incl m/ss - some MUH). Also many sets to mid 1980s FU, incl seldom seen very modern issues. Good cv. Weight 4.5kg.	\$850
153	/	Pitcairn 1940-2020 apparently complete mint incl m/ss colln in 10 albums. Some issues incl m/ss MUH. Noted more modern colour seps & also a hand painted leaf by Irma Christian. High cv. Excellent opportunity to acquire the very attractive stamps telling the story of this fascinating island. Also incl 3 informative Tourist books. Weighs 8+ kg.	\$1,350
154	/	Postal Services & Philately accum in 5 albums, choc box, packet plus UPU booklet. Some series of pgs written up for display (eg: Rowland Hill), p/cs of post offices, Stampex issues etc, etc.	\$700
155	/	Romania, Hungary 1860s-1960s x 2 collns in large clip albums. Noted Romania: 1866-69 imperfs x 4: useful 1872 perfs; 1906 Welfare Fund sets mint, complete excl 1 value (cat £210); 1918 Postal Tax mint (SG T671-2, cat £94).	\$500
156	/	Singapore 1949-78 seln of 175 mint & used on stockcards. Incl 25 diff sets incl 1949 UPU set MUH, 1970 Osaka World Fair set CTO & 1977 Postage Dues (10c LH mint x 2, 10c FU x 3, 20c FU x 2, 50c FU x 3). Some dupn. SG cat £615.	\$250
157	/	South Africa 1910-58 colln, mix mint & used, good range all eras. Noted 140+ bilingual pairs 2 perf mostly mint incl some blocks. Some South West Africa from 1923 with about 50 bilingual pairs etc. Rather untidy.	\$400
158	M	South Georgia 1963-79 mint colln appears complete incl extra 1963 Picts set.	\$350
159	M*	South Georgia & South Sandwich Isl 1986-2012 mint (a few sets/m/ss MUH) in 3 albums appears complete in m/ss. Good cv.	\$500
160	/	South East Asia 1870-1990s colln of 3100+ mostly used in 2 s/b. Noted: Brunei 1906 1c, 3c & 5c on 16c mint; Indo-China 1907 short set to 2F (no 30c) FU; Indo-Chinese POs in China, 60 diff FU; Singapore 1955 QEII Pictorials short set to \$1 mint (\$1 MUH); Thailand 1905 1a on 14a & 2a on 28a surcharge mint & FU & 1961 King Bhumibol set of 18 FU. Weight 4.2 kg. SG cat £3200+.	\$1,250

161	/	South West Africa & Namibia 1897-1999 comprehensive colln in 9 folders covering: 1) German South West Africa 1897-1911 x 45 stamps to 40pf; 2) stamps of South Africa used in SWA 1917-1922 (fore-runners) x 19 (9 on piece); 3) SWA 1923-90: a) 3,300+ MUH/mint incl 1935-49 sets in bilingual pairs/units mint (Voortrekker commem & Huguenot sets MUH); 1939-90 near complete incl 1974-90 complete (incl 7 m/s) MUH, control blocks of 4 or 6/strips of 5 for 1973 defins (31 diff), 1980 defins (complete & 135 duplicates) & all 1981-90 issues; b) 800+ used incl 150 CTO 1981-90 complete (incl 5 m/s) & 90 postal history (on piece) & 32 FDCs. 4) Namibia 380+ MUH (incl 30 m/s) & 150 CTO (incl 10 m/s) along with 10 booklets & NAMPOST 1990-4 packs in slipcase. Some dupn. CV £2400+.	\$1,250
162	/	Southern Rhodesia 1924-c1953 seln of 79v on 2 Hagners, useful range incl perf varieties, & dupn, Admirals range to 2/6d mint & 1931 to 5/- used. SG cat £1000+. Mint/MUH/used.	\$375
163	CU	Sweden 1855-c1919 colln on pages, dupn annotated as per various types, pmks, perfs etc. 1858 5ø page alone cat £1800+. Also incl a few postal stationery items, officials & Postage Dues. Variable cond. SG cat £5400+.	\$900
164	U	Sweden 1970s-2000s colln in 3 Warwick albums & on pages, more or less complete. Incl stamps from booklets, late 1996-2000 many as complete booklet panes with first day cancels. SG cat £2500+. FU.	\$750
165	/	Switzerland 1850s-1996 extensive colln in Hagner album & 4 small s/bs. 5 x Rayon, 6 x 1st Helvetia, 1862 2nd Helvetia incl 30c & 40c; 1892-93 15c mint, also used x 2 (scuffed); 3 x 1900 UPU sets used. 1923 2F Air plain paper used; 1940 National Fete m/s stuck down on convention card; 1943 Centenary block of 12 m/s MUH; 1968 5c type 13 tete-beche mint & useful Pro Patria, Pro Juventute publicity sheets etc.	\$1,500
166	U	Switzerland 1854-62 colln of 1st Helvetias, well presented. Noted: 15r 1st printing, 3 margin; 5r 1st Berne printing 4 margins; 20r 1st Berne printing 2½ margins; 10r 2nd Berne printing 3½ margins. 31 stamps.	\$450
167	/	Switzerland 1862-1907 2nd Helvetia & standing Helvetia issues. Noted 2nd Helvetia 2 x 1F used, 2c double impression, one invtd, cds VI 89, Standing Helvetias incl pmks, retouches, plate marks & reprints. 53 2nd Helvetia, 183 standing Helvetia.	\$950
168	M*	Tokelau 1948-2020 complete mint colln in 9 albums, incl m/ss - some stamps incl m/ss MUH. Also some early issues in blocks. Also "The Postal History and Postage Stamps of the Tokelau" by Burgess. Weight 8kg.	\$750
169	C	USA c1848-c1950s Railroad cancellations x 62 covers on written up pages. Noted: 2 c1848 Philadelphia covers with 1c Bloods local stamps acid tied (Scott 15L13 & 15L16) wide range of locations. Also 88 c1900s-50s Railroad related p/cs (well written up), nearly all real photos. A most interesting colln.	\$1,000
170	U	USA c1850-c1935 used colln of approx 350v in small s/b incl \$2 Omaha, sound (cat £1200), also \$1 (cat £750) but thinned. SG cat £2700+.	\$950
171	/	USA 1857-2020 colln of 1800+ mostly used in s/b. Noted: 1862 24c Washington FU; 1869 12c GU & 15c FU blunt corner; 1870 90c Perry FU with revenue cancel; 1893 50c Columbus FU; 1894 50c Jefferson FU, 1901 Pan-Am set of 6 FU. SG cat £4500+.	\$500
172	U	USA c1860-1980s used colln in 2 s/bs with dupn. Noted: 1870 24c Scott x 2; 90c Perry; 1893 Columbian Expo to 30c; 1898 Omaha to 50c etc, also various revenues. Cat £4100+. Mixed cond.	\$750
173	/	USA 1893 & 1898 Expos seln on stockcards. 1893 seln of 10c & 1898 used to 10c plus 50c GU & 1c, 2c, & 4c mint (latter gum adhesions). Mint & used.	\$250
174	U	USA 1894-1917 used colln of 175v on 17 pgs. Incl perf & shade varieties, Omaha to 50c perf only 2 sides & defins to \$5. Cat simpl £1500+.	\$375
175	/	World c1930s-90s attractive seln on 60 stockcards, mostly thematic sets. Noted 5 cards with Chinese stamps incl 2 good m/s. Very good cv.	\$1,000
176	*	World 1949 UPU MUH colln in special UPU album, mostly complete incl Italy - missing 24 sets.	\$750

## COLLECTABLES

177		Cigarette cards: 1903 "Fruit Girls" (pretty women matched with various fruits), publ British American Tobacco Co. Unnumbered. Superb chromolithographic printing. Range of 21 diff (ex set of 25). About half are very good cond, the rest good average. Murray cat £315 (£15 each). Rare.	\$250
178		Cigarette cards: 1903 "Smoke Girls" (racy portraits of pretty women smoking; brown borders). Unnumbered. Range of 21 diff (ex set of 24), almost all edge wear. Murray cat £378 (£18 each). Rare.	\$275
179		Cigarette cards: 1904 "Russo-Japanese War", publ Taddy, 21 diff ex 1st series Nos 1-25 (missing Nos 1, 2, 13, 18). Multicoloured. Fair to fine but mostly good average cond. Murray cat £504 (£24 each). Rare.	\$400

- 180 Cigarette cards: 1904 "Russo-Japanese War", publ Taddy, 19 diff ex 2nd series No 26-50 (missing Nos 26, 39, 41, 44, 45, 49). Multi coloured. A couple are only fair but most are good to very good cond. Murray cat £532 (£28 each). Rare. \$500
- 181 Cigarette cards: 1906 "Australian Footballers" (half-length portraits of Australian Rules players - apparently series B), publ Sniders & Abrahams (Australia - imprint not on cards). Unnumbered. Multi-coloured. Range of 18 diff (ex set of 76). One (E Rankin) is only fair, the rest good (some rounded corners) to fine. Murray cat £450. Rare. \$350
- 182 C NZ 1940-64 Bernard Freyberg memorabilia: (1) cover from Egypt to Bishop of Wellington. Hand addressed by & signature of "B.C. Freyberg Major Gen". Cancel NZ FPO 13 MY 40; (2) Xmas card with best wishes from Royal Household, signed Bernard Freyberg, (a little scruffy) in envelope cancelled 5 NOV 1962 addressed to C Hegglun; (3) + 2 others. \$170

## LITERATURE

- 183 NZ x 8 books: noted The Postage Stamps of NZ 1855-1873 The Chalon Head Issues by Odenweller; The Vending Machine Coils of NZ" etc by Kundin; NZ POs by Startup (1993 last edn; A History of Govt Life Postage Stamps by Brodie; etc. Also 2 RPSNZ Samoa Monographs by Burge. \$400
- 184 Stanley Gibbons Monthly 1901 x 4 featuring stamps of Cook Isl (AF Bassett), 1902 x 7 The Stamps of Tonga (Bassett), 1928 x 5 The Later Issues of NZ (RJG Collins), plus 1954 Life Magazine 8 pages World's Rarest Stamps. \$120
- 185 The Postage Stamps of New Zealand - all 10 vols. Vol 1 incl FFQ photo plates & Vol 2 FFQ die proofs. Minor spine damage (vols 2 & 3) & foxing (vols 1-3). All with dustjackets - vols 1-3 modern replacement, vols 3-6 tatty. \$1,200

## NEW ZEALAND - POSTAL HISTORY

- 186 U Greenstone (GM 1865-1930, goldmining), fine complete "Greenstone 21/11/81" [1881] manuscript cancel on horiz pair 2d FSF. Believed unique (only example recorded by Marshall in 1983 & no other reported since). Also complete large "G" obliterator on 1872 FFQ 2d orange p12½ (the only cancel held in FFQ period 1865-1873). Also rare. \$500
- 187 C Waihirere Pa (NA, temporary PO 13-19 June 1938) long cover (vert fold at left, otherwise fine), franked 1½d, 2d, 3d 1935 Pictorials (all with Maori theme), each with m/s "Waihirere Pa" below stamp. Each stamp subsequently canc Wairoa cds 18 JE 38. 12.15PM. Violet h/s "CARROLL MEMORIAL HUI" at top. To Dunedin. Endorsed in ink "Posted on the Marae, Waihirere Pa Post Office on the date of opening of Carroll Memorial Hall". This cover illustrated on page 97 of PSNZ Vol 3 (1955). No special d/s was issued to this PO & 149 covers are record as having been posted, but this is possibly the only one to have survived. Rare. \$750

- 188 C/ 1840s-1950s Very useful range of locality pmks (often on cover), generally fine strikes, incl many scarce or rare. About 50% still in original pockets as purchased, with individual marked prices of up to \$100 or more. Many Maori place names related to birds or food. These incl rare Kakariki (PM 1910-15) fine J-class 25 JE 13 on letter & also fair/good strike on associated cover (each priced at \$750!) & very early Kororarika crowned oval d/s dated "1840" (rare), 70% strike on piece. Noted also nice strikes of Atea, Putara, Kauri, Rahui, Kopuku, Tinaaruhe, Wakapuaka, Kohatu, Raupo, Tuhua, Kiore, Puka, Rangiheke, Mangaoranga (MS 1904-14, rare) on p/c, and many others. Nice lot. Total 102 items. \$2,500

- 189 C 1841 entire from early Anglican missionary William Williams to his associate Rev W Cowper in Sydney, New South Wales, with 3 pages of news relating to his ministry among the New Zealand "natives". Message headed "Poverty Bay, New Zealand, March 23 1841". Apparently carried privately north to Kororarika (Russell), where it entered the (rudimentary) mail system, 7 weeks after writing. Good strike of rare "KORORARIKA / NEW ZEALAND" crowned oval d/s, dated "MY \* 14 / 1840" (the year "1840" was fixed in the d/s). This d/s is known used Sept 1840 to circa Aug 1844, but was very little used after Sept 1841 (the "PAID AT KORORARIKA N.Z." h/s, with no date shown, being usually preferred). M/s "3" in red (3d paid) & "3" in black (3d to be paid by recipient) & with partial unframed cds "SHIP LETTER / SYDNEY" JU \* 9 / 1841. Ex J.J. Bishop (1990). This entire is illustrated (as Fig 21) on page 66 of PSNZ Vol 7 (1988). An important & informative early NZ letter. In surprisingly good condition. With full typed transcript of contents. \$4,000

- 190 C 1845 Lettersheet Auckland to London with boxed "Paid at Auckland", m/s "4" and "8". B/s "Ship Letter" S/L and "New Zealand SP 12 1845" cds. \$1,150

**BID BY MAIL, FAX, TELEPHONE, E-MAIL OR ONLINE AT [WWW.MOWBRAYCOLLECTABLES.COM](http://WWW.MOWBRAYCOLLECTABLES.COM)**

191	C	1850s Crowned Circle "Paid" h/ss: 1853 wrapper to Francis Dillon Bell, Commissioner of Crown Lands, Wellington, franked by good h/s "Paid at Auckland New Zealand" & with Wellington unframed receipt cds JU 20 & similar Auckland despatch b/s MY 16 (over 1 month transit). Also 1859 entire to Wanganui, franked fine h/s "Paid at Wellington New Zealand"; fine Wellington unframed cds NO 28 & good Petre (Wanganui) unframed cds NO 30 (2 days' transit). Also 1849 pre-stamp ship letter entire (multiple folds) to GB, canc fine Auckland unframed cds JY 11, with black m/s "8" (8d to pay), GB receipt d/s 23-24 NO. With typed transcript of message (sender was leaving for California goldfields due to "the miserable state of matters in New Zealand at present"), 3 items.	\$1,250
192	C	1856 entire (ex Wellington), canc fine complete unframed "PETRE / NEW ZEALAND" cds JA 9 1856 & fine large ornate "2" h/s in black (2d to pay). M/s "Overland", b/s fine unframed Wellington cds 2 days earlier. Also fine strike of same Petre cds NO 1 1855 on entire to Wellington (fine unframed cds NO 3 1855). Good condition. Written up on 2 pgs. PO name 1842-58 (to Wanganui), 2 items.	\$500
193	C	1857 entire (no postal markings) to "Mrs Alicia Jones, up the Whanganui, Kind care of Mrs W. Kells", from early Methodist missionary, William Woon (1803-1858, known to Maori as "Te Wunu"). Message headed "Whanganui, Oct 21 1857". Ornate "WW" on wax letter seal. With typed transcript & biographical data. After a career in Tonga (from 1831), northern NZ & Taranaki, Woon returned to Whanganui in 1854 & was for a time postmaster there. Early letter carried privately (?) up the Whanganui River (possibly no regular postal service to there at this time?) Important Whanganui social history. Fine cond.	\$500
194	C	1860 stampless envelope to England with "Paid at Wellington New Zealand" crowned circle pmk. M/s 1/- in red. On reverse - Wellington JUN 1 unframed cds, indistinct Newcastle cds. Part flap missing slightly torn on front. SG CC8. Cat £350.	\$500
195	C	1864-81 stampless printed official covers x 2: 1864 franked by m/s "W. Fox" (William Fox, Colonial Secretary, later Prime Minister of NZ), canc "FREE AUCKLAND NEW ZEALAND" unframed cds FE 6; 1881 franked by black "TREASURY NEW ZEALAND" h/s with crown in centre (overall light toning). Also 1876 cover Christchurch to Dunedin with FSF 2d & 2 x 1d, canc fine duplex pmk 28 MR (3 items).	\$750
196	C	1865 Land Wars envelope, addressed to Mrs Laver, Auckland with 1d carmine-vermilion horiz pair, p12½, star wmk (RH stamp badly damaged), tied by light "Province of Auckland No. 1" cds (Newcastle, now Ngaruawahia). These covers are well documented by Gerald Elliott, this being "item 84" in his list.	\$500
197	CU	1880s-1980s Gisborne district postal history/postmarks, extensive colln of approx 420 covers/postcards/PO photos plus 300+ pmks on stamp or piece, in 4 bulging looseleaf albums (2 of Gisborne CPO material & 2 of GS postal district postmarks). Mostly good clear strikes. Good range of material, incl some really scarce items, eg Tikiwhata fine J-class on cover (1937-41 railway construction camp), 1930 Dominion Airlines Ltd Gisborne to Hastings carriage label (complete), Waerengaahika fine H-class 1905 on p/c, Midway 1951 relief d/s on cover (these all fine), & others. Much ex Tombleson. Also computer list (17 pages, c1980) of GS district PO postmarks.	\$1,000
198	C	1892 long overweight (1oz +) reg'd envelope to England with 2½d SSF horiz strip of 4, p12 x 11½ + ½d Newspaper Stamp tied by 10 SEP 1892 Onehunga duplex cancels, Registered / 10 September 1892 / Auckland transit cancel & 1862 reg'n No in red m/s, to England. Interestingly, the ½d stamp has several small flaws (illustrated).	\$400
199	C	1900 (6 July) envelope from Berne to Sydney, bearing 1900 UPU set of 3 with Express cds, missent to NZ due to the lack of a country in the address with "Australia" added subsequently, showing boxed "MISSENT TO / INVERCARGILL" (31 x 8mm) (the sole recorded example of this h/s), with the reverse showing Invercargill cds "R.P.O. DN S/2" TPO (14.8), Sydney (23.8) and Kogarah cds. This mail was sent by northbound train from Invercargill to Dunedin & exchanged with the southbound train at the "crossover" station of Waipahi. Ex Jury, Wood.	\$700
200	C	1901-26 Defin FDCs x 3 (all plain): 1901 1d Universal, canc fine Glenary A-type cds 1 JA 01 (PO closed 1912); 1923 1d Map, canc fine Dunedin cds 1 OC 23; 1926 1d GV Field Marshal, canc Wellington slogan machine d/s 15 NOV 1926. Fine & scarce. Jury cat \$1375.	\$750
201	C	1906 South Africa-Natal OAS cover to Reefton, NZ, ex volunteer during the mid-1906 Bambatha Rebellion in South Africa, bearing 11 July 1906 Stanger, Natal cds, oval T/10c tax mark in black, & NZ 1d vert pair P Dues tied by 15 AUG 1906 Reefton cds. The Zulu uprising against paying taxes to the British, lasted for about 6 weeks before being suppressed. Mail from those involved with subduing the rebellion could be sent free of charge within Natal but because the rebellion was deemed by postal authorities to be a local matter, OAS mail sent outside Natal was deemed to be short paid & therefore taxed accordingly. This cover charged at international p/c rate of 1d (equivalent to 10 gold centimes - hence the tax mark) & was thus charged 2d upon delivery in Reefton. Vendor states this p/c is the only reported taxed p/c from the Bambatha Rebellion.	\$1,000
202	C	1924 Wellington consignee's letter only cover bearing ½d EVII, COLLECT / AFFIX STAMP / BEFORE / DELIVERY h/s in black, ½ inserted in blue pencil & 28 JAN 1914 Wellington cancel tying ½d P Due (Cowan, p11, wmk paper) to cover. From 1908-15 a ½d fee applied for such mail & was a single deficiency rate for this service. Very few consignee's letters are recorded.	\$600

- 203 C 1928 Double weight cover with illicit use of Iraq 8a (camel) Official stamp ex 30 JAN 1928 Erbil, Mosul, Iraq to well-known philatelist in Palmerston North, NZ. Cover bears ERBIL MOSUL / DUE / AS undenominated bilingual horseshoe tax mark in black, 12 inserted in pencil, circular T tax mark in black, 90 in red pencil, OVERLAND MAIL bilingual red & white perforated label. 1925 1d x 2 pairs & single, 2d NZ P Dues tied by Palmerston North letter carriers 24 March cds. Rear bears Baghdad, Qantara & Port Said b/s. P Due charged at 90 gold centimes = 4½d underpaid + 4½d fine. A most attractive, scarce cover. \$600
- 204 C 1928 Well-travelled, twice addressed cover ex 13 NOV 1928, Baghdad, Iraq, to Palmerston North, then Kelburn, & ultimately Marton, NZ, bearing 1a Iraq stamp x 3, circular T (taxe mark) in black, 30 added in red m/s, TO PAY / 3D / DOUBLE DEFICIENT POSTAGE h/s in black, Wellington undated "A" class cancels on 1d + 2d NZ P Dues & 29 DEC 1928 Wellington "C" class transit cancel. Rear bears 15 NOV 1928 Baghdad & 27 DEC 1928 Palmerston North Delivery "C" class cancels. \$400
- 205 C 1940 underpaid, Passed by Censor & NZ-Australia-England cacheted illustrated FFC, with 5d Centennial ex 27 April 1940 Auckland, deficiency calculated as 260 gold centimes = 2/2d with 4d, 5d x 2 & 1/- British Postage Dues affixed & canc 14 MAY 1940 Ryde Isle of Wight. As recipient declined the payment, cover had UNDELIVERED FOR REASON STATED / RETURN TO SENDER r/s applied to both sides. Also incl an OHMS Returned Letter ex 10 JUL 1940 Wellington, addressed to original sender (Mr W Joliffe) in Auckland with 1d x 2 3rd type P Due & 2/- Captain Cook & TO PAY / RETURN POSTAGE black h/s with 2/2 inserted in black ink, 11 JUL 1940 Epsom cancel. An amazing retained pair of P Due covers. \$400
- 206 C 1940-5 WWII Air Force Camps comprehensive colln of pmks on covers ex 32 diff offices (total 57 of war period, plus a few later). Noted many scarcer like Anderson Park (2 covers), Ardmore (2), Ashburton (2), Hamilton (2), Levin (3), Mangaroa (2), Milson, Mangere, Nelson (2), New Plymouth (2), Norwood, Omaka (2), Palmerston North (2), Remuera (2), Rotorua (2), Seagrove, Swanson, Tauranga (2), Te Awamutu, The Narrows (2), Waipapakauri (fair), Weedons (3). Quality of strikes varies but many are good to fine (incl some of the rarest). Covers mostly fine. Scarce lot. Ex Horrell. \$2,200
- 207 C 1943-4 The Delta Air Force Camps (Marlborough, WWII) fine range of 8 diff cds on cover, incl rare Ashford-Delta 10 SP 44 (good/fine), rare Cheshire-Delta 27 SP 44 (near fine), rare Evesham-Delta 15 DE 44 (fine, as b/s on airgraph envelope), The Delta "E" 12 JA 44 (good), rare Fareham-Delta 16 JL 44 (fair/good), The Delta "F" 19 DE 43 (good/fine), rare Guernsey-Delta 27 SP 44 (clear part strike, reg'd), The Delta "G" 21 MR 44 (good part strike). Rare group. All open for just a few months as RNZAF training camps. \$1,000
- 208 C 1944 WWII 1/- GVI blue POW aerogramme without blue frame on front (Samuel GA.3a, CV \$300) to J.H. Dark, Naval Airman 1st class, Stalag Luft III Germany from Wanganui. Also incl 1942 & 1944 "Kriegsgefangenenpost" POW letters to Wanganui from J.H. Dark & 1945 cover from Hamilton to J.H. Dark, c/- Navy Records Dept, Wellington. Condition latter 3 items varies. \$250
- 209 C 1963 "City of Hastings" Kaimai crash cover, Auckland 2 Jul machine cancel, addressed to Gisborne, with "Chief Post Office Gisborne 28(?) OCT 1963" h/s in green, burnt around edges. In official PO glassine inscribed "Received from the plane which crashed on the Kaimai Ranges on 3rd July 1963 (signed) JJ Shepherd acting Chief Postmaster". 168 pieces of mail were salvaged but few have been reported seen. This item has always been in family archives, vendor has connections to addressee. NZAMC 538. Cat \$850. \$750
- 210 C New Guinea-Japan c1942-4 WWII Japanese Occupation of New Guinea group of 5 Japanese military p/cs with "dove on military helmet" imprinted stamp design. Used, all addressed in Japanese & stated to have been sent from Japanese military camps in New Guinea to Japan. All printed text in Japanese, in red, orange or orange-yellow. Good cond, except for 1 (with attached label) damp affected in 1 corner. Unlisted in Higgins & Gage world postal stationery catalogue, but a quite similar 1939-40 "Soldier's head" design p/c is listed, unpriced with the statement "very rare in used condition". A rare lot. \$575
- 211 C New Guinea-Australia 1943-4 bundle of approx 100 censored (Australian?) WWII aerogrammes (inscribed "Air Mail Air Letter", the earliest type of aerogramme), in 2 diff sizes, with postage paid by Australian 1d or 2d adhesives. All to the same family address in Croydon, South Australia, from the same A.I.F serviceman in New Guinea. Varying quality of Aust Army PO cds cancels (noted 020, 042, 0138, 182, 214, 221, 360). All clean, neatly addressed & carefully opened. Sequentially numbered by sender. The cleanest such war-time correspondence we have seen. Ex E O'Connor. \$375

## NEW ZEALAND - DEFINITIVES

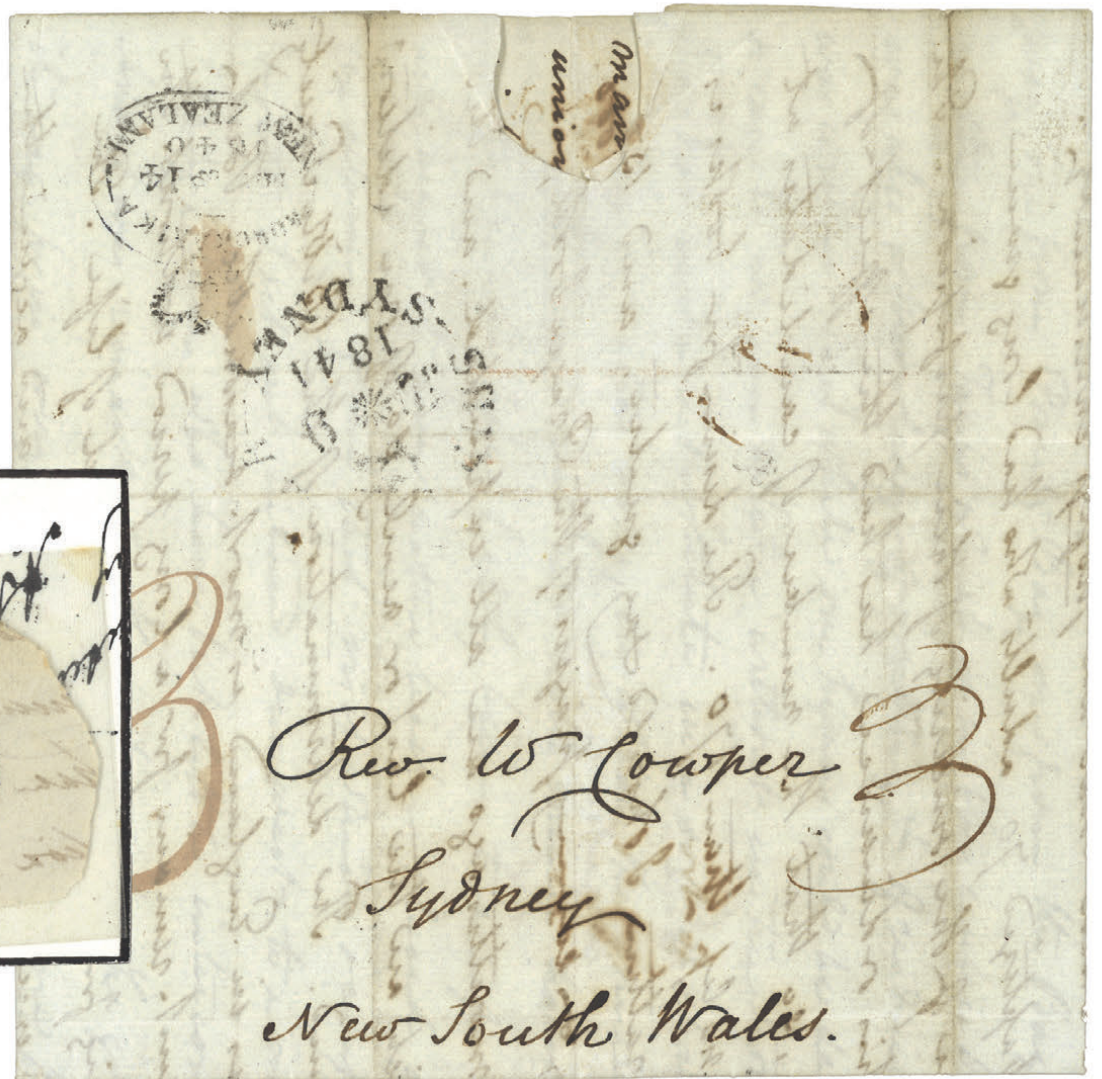
### *Full Face Queens Collections & Accumulations*

- 212 / Used colln: incl SG 2 (FU 3 margins), 4 (2 mgns, minor faults), 8, 10, 13, 17 (4 mgn small back thin); 35, 38, 43, 46, 68, 73, 74, 78, 83 (1 mgn, small back thin), 93, 97, 98, 100, 108, 110, 113, 114, 117, 117a (single), 118, 119 (sound GU/FU), 120 (nice), 122, 122a, 124, 126, 128, 130, 132a, 134, 136, 138, 139 (mint), 141 (sound GU/FU), 142 (GU nearly FU). 41 stamps, generally good cond but incl other minor faults not already mentioned. \$4,000

213	/	Mostly used seln on 2 Hagners, all perf except 2d blue imperf (2+ margins, SG 4) & 1/- blue-green imperf 2 margins light crease (SG 17). Incl 1d red-orange x 7 (1 mint OG); 1d brown x 6 (incl mint OG but 1 missing perfs at top); 2d blue x 11 (incl 1 mint & several retouches); 2d orange x 5; 3d lilac-mauve x 8; 4d rose x 2 (1 enhanced perfs, other GU); 4d yellow x 3; 6d brown x 5; 6d blue x 6 (incl 2 mint OG, with trimmed perfs at top); 1/- x 6 (incl 1 mint OG). Total 61 stamps.	\$2,000
214	/	Seln of 60 on 3 Hagners. Imperf: 1d x 2, 2d x 9 (incl SG 5), 3d x 3 (incl accidental imperf x 2), 6d x 7 & 1/- x 4 (incl SG 6). Perf: 1d red/orange x 3, 1d brown x 5, 2d blue x 4, 2d orange x 4, 3d x 8, 4d yellow, 6d brown x 5, 6d blue x 3 & 1/-. Also 2d Hausburg. Mixed cond with 1 x 1/- obvious repair. All used except 6d reprint & 1 x 1d brown unused.	\$1,600
215	/	Seln: SG 8, 10, 40, 41, 43, 110 x 2, 113, 117, 119, 122, 132a, 136, 138 & 139. All apparently unused but SG 40, 41, & 43 light evidence pmks. SG 8 faults, SG 10 small back thin, SG 41 corner repair & some other minor faults but overall visually attractive group.	\$1,500
216	U	Used seln: 13 imperf SG 34, 35, 38, 39, 40 x 3, 41 x 2, 43 x 2, 44 & 45; 14 perf SG 110, 113, 114 x 2, 117, 118, 119, 120, 122, 125, 132a, 133, 134 & 136. Imperfs nearly all 4 margins, some mixed cond. GU/FU with 3 cleaned m/s cancels. SG cat £4375.	\$1,000
217	M	Seln, all apparently unused: 5 imperf SG 35, 36, 40 41 & 44; 9 perf SG 110, 117 (bluish lilac), 120, 122, 125, 132a, 136 & 138. All no gum except SG 138. Imperfs all 3 margins except SG 40 4 margins. SG cat £10000+ (as mint).	\$2,000
218	M	Large star wmk, p12½: 1d vermilion mint; 2d blue MNG; 3d lilac mint; 4d yellow mint; 6d brown mint; 1/- yellow-green mint; 1d brown MNG; 2d orange mint; 6d pale blue MNG. Also an attractive 4d rose MNG, tone spot, rounded top left corner with "REPAIRED" h/s on rear (10v). SG 110, 115, 117, 119, 120, 122a, 125, 132a, 133, 136. SG cat £5850.	\$2,100
219	U	2d blue p12½ used seln of 100 on Hagners, star wmk. A few annotations & a few retouched, nice range of shades. Tidy lot. SG 115/a etc. Cat £2200+.	\$1,000

### **Full Face Queens**

220	/	1855 1/- pale yellow-green on blued paper, London print, imperf 3 margins, just touches on 4th at right, barred "10" cancels (Wellington). Tiny tone spot on reverse. SG 3. Cat £6000. GU/FU.	\$1,500
221	U	1855 1/- pale yellow-green on blued paper, London print, imperf 2 margins, just touches on 3rd, close on 4th, star wmk. Repaired hole, does not affect frontal appearance. SG 3. Cat £6000. GU/FU.	\$500
222	U	1855 1/- pale yellow-green on blued paper, London print, imperf 2+ margins, star wmk. 2 rather heavy barred numeral cancels. CP A6a, cat \$15,000. SG 3. Cat £6000. GU.	\$1,000
223	U	1d red on blue paper, imperf 4 margins, fine barred "16" cancel (Port Victoria). SG 4. Cat £2500. Used.	\$2,000
224	U	1d red on blue paper, imperf 3 margins, fine barred "12" cancel (Wanganui), light back thin at top. SG 4. Cat \$2500. FU.	\$600
225	U	1d red on blue paper, imperf 3 margins, minor back faults. SG 4. Cat £2500. FU.	\$600
226	U	1d red on blue paper horiz pair, imperf full margins, very close right at top & bottom at left. Fine barred 10 (Wellington). Excellent colour, an exceptional item. CP A1c, cat \$8000. SG 4. Cat £5000. FU.	\$5,000
227	U	1d red on blue paper, imperf 4 margins (close to large). SG 4. Cat £2500. GU.	\$750
228	U	2d blue on blue paper, imperf 4 margins close at sides. SG 5. Cat £325. FU.	\$250
229	U	1/- green on blue paper, imperf 3 margins, fine barred "10" cancel (Wellington). SG 6. Cat £4000. FU.	\$1,000
230	U	1d dull orange, imperf 4 good to large margins, thin vert mesh no wmk paper, light barred cancel. Excellent example. CP A1d(2), cat \$2000. SG 8. Cat £900. FU.	\$1,000
231	U	1/- blue-green, imperf 4 margins close in places, no wmk. Very fine barred 1 cancel (Auckland) clear of face. CP A6c(2), cat \$4000. SG 17. Cat £1800. VFU.	\$1,250
232	M	1d carmine-vermillion, imperf 4 margins, star wmk, OG. SG 35. Cat £1000. Mint.	\$1,000
233	M	1d carmine-vermillion, imperf 4 margins, very close top at right, star wmk. SG 35. Cat £1000. Unused no gum.	\$750
234	M	1d carmine-vermillion, imperf 4 margins, star wmk. CP A1e4, cat \$2000. SG 35. Cat £1000. OG mint.	\$1,000
235	M	3d brown-lilac, imperf 4 good even margins, star wmk. O/G ( a bit disturbed). Attractive item. CP A3a1, cat \$1250. SG 40. Cat £750. Mint.	\$750
236	M	3d brown-lilac, imperf 4 margins, star wmk. SG 40. Cat £750. OG mint.	\$750
237	M	6d black-brown, imperf 4 margins, star wmk. SG 41. Cat £2500. RPSNZ cert (2017). Unused no gum.	\$1,500




189



ex 188



190


  
*F. D. Bell Esq*
  
*Commissioner of Crown Lands*
  
*Wellington*

ex 191

On Public Service Only. *W. Fox*
  
*Wm. Fox*
  
*Revenue Subg 8/64*
  

  
*Edw. Calchpole Esq*
  
*Customs*
  
*Napier*
  
 Colonial Secretary's Office.

ex 195

  
 The Address only to be written here.

*on delivery requires*
  

  
*Wm. Bell Esq*
  
*Ruyton*
  
*West Coast*
  
*South Island*
  
*New Zealand*
  

  
 DOUBLE DEFICIENCY TO PAY

201





220



221



222



223



224



225



227



226



228



229



230



231



232



233



234



235



236



237



238



239



240



241



242



243



244



245



246



247



248



249



250



251



251



252



253



254



255



256



257



258



259



260



261



262



262



263



264



266



267



268



269



265



270



271



272



273



274



275



276



ex 277



279



ex 280



281



287



289



296



303



307



298



304



306



308



314



317



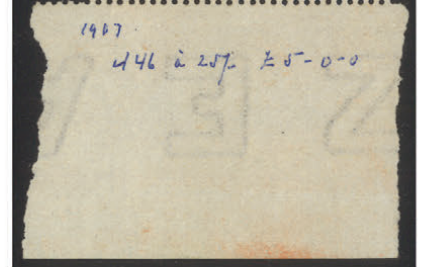
319



320



312





315



322



326



328



ex 331



332



343



345



346



348



ex 350



353



352



ex 360



363



ex 364



367



ex 368



370



375



377



376



ex 371



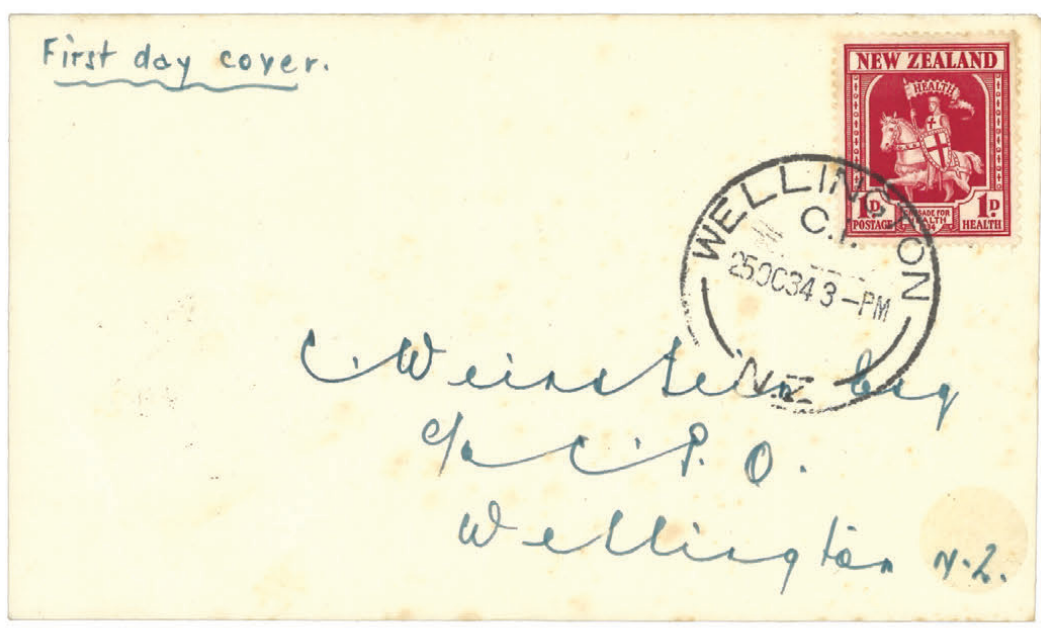
ex 378



387



422



424



ex 383



ex 385



ex 390



ex 401



403



ex 407



412



ex 406



ex 409



436



419



440



441



442



443



444



ex 445



454



450



453



457



458



460



452



462



ex 461



ex 464



466

504 ▶



607



612





467



468



471



ex 479



494



496



497



501



ex 508



ex 510



511



514



517



522



521



ex 528



539



540



542



547



535



552



554



556



ex 563



566



569



591



592



619



620



624



ex 614



618



633



ex 616



622



621



613

238	M	1/- yellow-green, imperf 3 close margins, star wmk. SG 45. Cat £3000. Unused no gum.	\$1,500
239	U	2d pale blue, rouletted 7 discernable all 4 sides, clearly on 3, star wmk. SG 51. Cat £750. FU.	\$500
240	U	6d black-brown, rouletted 7 all sides (top internal), star wmk, light m/s cancel, hint of bar cancel. SG 53. Cat £700. FU.	\$800
241	U	6d red-brown roulette 7 (rouletted 3 sides), star wmk, attractive. SG 55. Cat £600. FU.	\$500
242	U	6d red-brown, rouletted 7 clearly on 3 sides & partially at right, star wmk. RPSL cert (1996) states "small closed tear". SG 55. Cat £600. FU.	\$200
243	U	6d black-brown, serrated perf 16/18 (Nelson), clearly on all 4 sides, star wmk. Barred "15" cancel (Nelson). Ex Hackmey. Excellent example. RPSL cert (2000). CP A5b1T cat \$5000. SG 63. Cat £2500. FU.	\$2,500
244	M	1d carmine-vermilion, p13, star wmk, centered to left. Regummed. SG 69. Cat £3250. Mint.	\$1,500
245	M	3d brown-lilac, p13, star wmk, straight edge at left ( stamps from LH of sheet & vert line in wmk). SG 74. Cat £4000. Unused no gum.	\$750
246	U	1d orange-vermilion, imperf 3 margins, close on 4th at bottom, Pelure paper, barred numeral cancel. SG 81. Cat £2750. GU.	\$1,000
247	U	2d ultramarine, imperf 4 margins, Pelure paper. Small light back thin top L/H corner. Odenweller cert (1987). SG 82. Cat £1200. FU.	\$750
248	U	2d ultramarine, imperf 3 margins, just touches on 4th at right, Pelure paper. SG 82. Cat £1200. FU.	\$750
249	U	1/- deep green, imperf 4 margins except just touches left at top, Pelure paper. SG 86. Cat £1200. FU.	\$750
250	M	1d carmine-vermilion imperf horiz pair, each approx 3 margins (close all round), NZ wmk. L/H stamp small back thins, R/H stamp (printing) ink areas on back. SG 97. Cat £1900. Unused no gum.	\$1,250
251	/	NZ wmk group: 2d & 1/- imperf both 4 margins FU; 2d p12½ OG mint; 6d p12½ FU; 1/- p13 GU/FU (one short perf). SG 98, 100, 106-8. Cat £2115.	\$575
252	U	6d red-brown, imperf 4 margins, NZ wmk. SG 99. Cat £900. FU.	\$750
253	U	6d red-brown, imperf 4 margins except close top at right, NZ wmk. SG 99. Cat £900. FU.	\$600
254	U	6d red-brown, imperf 4 margins, NZ wmk. SG 99. Cat £900. FU.	\$650
255	U	2d pale blue (plate I worn), rouletted 7, clearly discernable 3 sides, NZ wmk. SG 102. Cat £1100. FU.	\$750
256	U	2d pale blue, rouletted 7 discernable at right side only, NZ wmk, small hinge thin. Odenweller cert (2015). SG 102. Cat £750. FU.	\$500
257	U	2d pale blue, roulette 7 clearly visible at top & base, NZ wmk, part "Headquarters" barred cancel. SG 102. cat £1100. GU nearly FU.	\$375
258	U	1/- green, p13, NZ wmk, clear Dunedin FE 10 65 cds. RPSL cert (1957). Ex Bartrop. CP A6h, cat \$1000. SG 106. Cat £750. GU/FU.	\$600
259	M	2d pale blue (plate I worn), p12½, NZ wmk. O/c. SG 107. Cat £500. OG Mint.	\$250
260	M	6d red-brown, p12½, NZ wmk, centered to left. SG 108. Cat £750. Unused no gum.	\$500
261	M	1d carmine-vermilion, p12½, star wmk. Gum remnants. SG 110. Cat £275. Mint.	\$250
262	M	1d carmine-vermilion, 2d pale blue (plate I worn), p12½, star wmk. SG 110, 113. 1d OG mint, 2d regummed mint. Cat £675.	\$300
263	M	1d pale orange-vermilion, p12½, star wmk, OG. SG 111. Cat £300. Mint.	\$200
264	U	3d mauve-lilac shade, accidental imperf single, large margins all round, "14" cancel. CP A3dz, cat \$275. SG 117a (cat £2250 as pair). FU.	\$350
265	U	3d deep mauve on piece, accidental imperf 4 good margins, star wmk. CP A3dy, cat \$450. SG 118a (pair cat £2250). FU.	\$500
266	M	4d deep rose, p12½, star wmk, rounded lower right corner. Good colour. SG 119. Cat £3500. Unused no gum.	\$1,500
267	U	4d deep yellow & golden yellow shades, p12½, star wmk. Each with Odenweller cert (2015). CP A4b(3) & (5). Cat \$1950. FU.	\$600
268	M	4d yellow, p12½, star wmk. SG 120. Cat £300. Unused no gum.	\$250
269	M	1/- yellow-green, p12½, star wmk, OG. SG 125. Cat £400. Mint.	\$400
270	M	1d brown, p10 x 12½, star wmk. Unused no gum. SG 128. Cat £425.	\$250

271	M	1d brown, p10 x 12½, star wmk, blunt corner. SG 128. Cat £425. Mint.	\$200
272	M	2d vermilion, p10 x 12½, star wmk. SG 130. Cat £350. Regummed mint.	\$200
273	M	2d vermilion, p10 x 12½, star wmk. SG 130. Cat £350. Mint.	\$250
274	M	1d brown horiz pair, p12½, star wmk, worn plate. SG 132a. Cat £550. Unused no gum.	\$300
275	M	4d orange-yellow, p12½, no general wmk but with tiny part of papermaker's wmk from "H S" of "T H SAUNDERS". OG. CP A4c(z), cat \$1000. RPSNZ cert (2021). SG 139a. Cat £500. Mint.	\$400
276	M	4d orange-yellow, p12½, no wmk. OG. SG 139. Cat £300. Mint.	\$300
277	M	Unused group: SG 110, 115, 117, 120, 122 & 133 (SG 133 OG the rest no gum/regummed). (Also SG 33 horiz pair very badly stained). Plus 2d blue imperf reprint. Cat £1635 (excl SG 33s).	\$850

### ***First Sidefaces***

278	U	1874-8 Specialised used colln on annotated pages: 1d x 6, 2d x 8 incl wmk large star & nearly p12; 3d, 4d x 2, 6d x 5 & 1/- x 6 incl block of 4. Minor tone affects some.	\$500
279	U	1874 1d p10 at bottom with p12½ on other sides, ½ a row of additional perfs on stamp, evidence of misplacement. Rare. CP C1b(v). Cat \$2000. FU.	\$750
280	U	1874 simplified set of 8 (+ ½d Newspaper stamp). Jury cat \$1800. FU.	\$750
281	M	1874 1/- p10 x 12½, 4 margins with large left margin, patchy gum, cert mark. CP C6b. Cat \$2000. Mint.	\$750
282	M	1874 5/-. Jury cat \$1100. Fine mint.	\$450
283	M*	1875 ½d Newspaper Stamp horiz block of 10, p11¾, star wmk, each of upper 5 stamps with (upper sheet) line wmk. A few creases, otherwise visually fresh appearance. CP B2b. Cat \$1320+. 2 mint/8 MUH.	\$275
284	U	1875 1d deep dull lilac, large star wmk. SG 178, cat £300. CP C1d. Cat \$1000. FU.	\$300
285	U	1875 1d deep dull lilac, p12½, large star wmk. Barred "C" pmk (Christchurch). CP C1d. Cat \$1000. FU.	\$400
286	M	1875 2d rose, p12½, large star wmk. CP C2c. Cat \$2000. Regummed mint.	\$400
287	M	1878 2/- claret, o/c to left. CP C7a. Cat \$1250. Mint.	\$600
288	M	1878 2/- claret, o/c to right. CP C7a. Cat \$1250. Mint.	\$500
289	M	1878 5/- grey. CP C8a. Cat \$1175. HH mint.	\$500

### ***Second Sidefaces***

290	/	1882-97 specialised accum of 368 on 29 annotated pages. Noted p12 x 11½ (½d used, 5d & 1/- mint), p11 (6d & 1/- mint), p10 (1/- mint x 2) & 157 advts (incl 133 x 1d partial reconstructed panes on 8 pgs, 2d p12 x 11½ (x 2), p10 (2½d, 4d, 5d, 8d & 1/-). Also incl FSF 2d p12 x 11½ (comb) x 13. CP cat \$9000+. Mint & mostly used.	\$1,000
291	/	1882-1900 Specialised mostly used colln on annotated pages: ½d x 5 used & 2 mint (horiz pair mixed perfs CP D1cx cat \$700); 1d x 215 u (incl horiz pair mixed perfs CP D2js cat \$1100 very minor tone) & 14 m (incl 1882 die I p12 x 11½, 1899 die III p12 x 11½ & p10 x 11 screwdriver flaw MUH); 2d x 54 u & 8m (incl blk of 6 some faults); 2½d blk of 4 p11 mint/MUH; 3d x 4 u & blk of 4 mint (some faults); 4d x 4 u; 5d x 4 plate proofs - grey, pinkish red, blue-grey & violet; 6d x 5 u; 8d mint (with advt); 1/- x 5 u. Good range shades, pmks dies (1d & 2d), perfs, wmk etc etc. But some toning evident.	\$1,000

### ***1898 Pictorials***

292	/	1898-1907 specialised accum of 279 on 26 annotated (perfs, wmk) pages. Noted 5d sepia, London print mint & used; 6d green Kiwi, London print p11 mint; 8d p11 MUH; 1/- Kaka (London print m x 2, u x 2, p14 m x 2, reduced size p14 x 13 & p14 x 15 m); 2/- (London print m&u, p11 wmk m, p11 laid paper m&u, p14 m x 2); 5/- (London print m&u, p11 m wmk u x 2, p11 wmk m&u, p14 m x 2, u x 2 - all used appear to be postal cancels). CP cat \$19,500+. Mint & used.	\$2,500
293	U	1898 6d Kiwi grass-green, London print, right perfs weak. RPSNZ cert (2017). CP E14a(3). Cat \$1500. FU.	\$500
294		1898 9d Terraces brown-purple, Waterlow & Sons trade sample m/s of 9 (3x3) line p12½, on unwmkd cream wove paper, un gummed, each stamp with diagonal ovpt "WATERLOW & SONS LD." (blue) & 1.55mm circular punch hole. Variety with vert line of perfs missing at left side of column 1. This variety listed by Diamond only for 2d & 2½d values (in group C4 p75). Fine & rare.	\$750
295	M	1898 2½d to 5/- seln, most affected by oxidisation. Jury cat \$2000. Mint.	\$450

296	*	1898 2/- Milford, London print. CP E20a. Cat \$2000. MUH.	\$1,000
297	U	1898 5/- Mt Cook, London print, well centered, squared Napier 18 JA 00 pmk. CP E21a. Cat \$1000. GU/FU.	\$400
298	M	1898-1906 5/- Mt Cook x all 6 main types - London print, p11 no wmk, p11 sideways wmk, p11 upright wmk, p14 sideways wmk, p14 upright wmk. Mint. (P11 sideways wmk RPSNZ (2021) cert). CP E21a-f. Cat \$4500.	\$2,000
299	M	1898 Pictorials set to 5/- London print (2½d Wakitipu no gum). SG 246-59. Cat £1100. (CP cat \$2980). Mint.	\$1,250
300	M	1899-1900 set to 5/-, p11, no wmk. SG 260-70. Cat £1000. (CP cat \$2350). Mint.	\$850
301	U	1900 1d Terraces crimson, invtd wmk. SG 274w, cat £350. CP E3aw. Cat \$800. FU.	\$300
302	*	1900 1½d Boer War vertical block of 24 (4 x 6), p11. Light vertical crease affects 2nd column of 6 stamps. CP E4a. Cat \$2640. MUH.	\$575
303	M	1900 3d Huias yellow-brown horiz pair imperf vert, p11, no wmk, tear in one stamp, gum with thins & light wrinkles. CP E9bx. Cat \$2000. Mint.	\$500
304	M	1902 1/- Kaka block of 4, imperf at top. CP E18d/z. Cat \$1980. Mint.	\$750
305	M	1902 2/- Milford, p11, Laid paper. CP E20c. Cat \$1000. Mint.	\$400
306	M	1903 4d Taupo blue & yellow-brown horiz lower selvedge pair, mixed perfs, officially patched at top, some perf separation on 2nd stamp, fresh. CP E12e(1). Cat \$3000. Mint.	\$700
307	U	1903 6d Kiwi rose-red, Cowan, rare single upright wmk, o/c to top right, couple of short perfs. CP E14f. Cat \$4000. VFU.	\$1,250
308	U	1903 1/- Kaka orange-red, Cowan, the rare invtd single wmk with 7mm spacing, "02 NO 03" cds cancel. Ceremuga cert (2020). CP E18c. Cat \$4000. FU.	\$2,000
309	M	1906 6d Kiwi rose-carmine, compound p14 & 11, single with right selvedge. CP E14h. Cat \$1000. LH mint.	\$500
310		1906 2/- Milford (cleaned fiscal) p14, also 5/- Mt Cook, sideways wmk, p14. Both with 20.5 x 3.0mm black CLEANED h/s, 4 & 5 respectively recorded + explanatory article.	\$500
311	M	1906 5/- Mt Cook red, p14, sideways reversed wmk. CP E21e var. Cat \$750. LH mint.	\$375
312	*	1906 5/- Mt Cook, p14, wmk upright. CP E21f. Cat \$2000. MUH.	\$1,000
313	*	1907 3d Huia, 6d Kiwi reduced. Jury cat \$575. MUH.	\$300
314	*	1907 1/- Kaka reduced block of 4 with lower selvedge. Jury cat \$4400. MUH.	\$1,500

### ***½d Mount Cook***

315	M	1902 Cowan single with LH selvedge, wmk paper, p14 x 11 with additional column of p14 to left of stamp & internal p14 at right with patching. Mint, adhesions on gum side. CP F4e.	\$100
316	M*	1902 Cowan wmk paper, mixed perfs top right corner horiz block of 8 with sheet number 681609. Top row of 4 MUH. Small thins & slight bend in top selvedge. Scarce impressive multiple. BPA cert (1961). SG 306. Cat £336.	\$300
317	M	1902 horiz pair imperf vertically (p14 horiz), Cowan paper, old plate. Pre issue light horiz gum bend. CP F4bz. Cat \$800. Mint.	\$350

### ***1d Universals***

318	/	1901-8 specialised accum of 260 mint & used on 22 annotated (perfs, wmk) pages. Noted Basted Mills p14 GU/FU x 9, booklet plate p14 GU/FU x 9, Royle p14 x 14½ comb singles x 6, horiz pair & block of 4 GU/FU. Also incl ½d green Mt Cook x 59 incl Basted Mills, p14 x 11 mint x 2 & GU/FU & Cowan mixed perfs single wmk block of 6 (1 mint, 5 MUH but 3 creased). CP cat \$3260+. Mint/MUH & used.	\$500
319	M	1901 Basted Mills paper, p14 x 11, low-centered with bottom of stamp above at top, offset on back. CP G3d(Y). Cat \$1750. MNG.	\$500
320	M	1901 Pirie paper, p14 x 11, well centered, invtd double-lined wmk. CP G2d(Z). Cat \$3000. Mint.	\$1,500
321	*	1901 Pirie Paper, p11, top LH corner block of 42 (7 x 6), with selvedge arrow marking between R1/6 & R1/7 & interesting "screw head" marking between R5/1 & R6/1. CP G2a. Cat \$1050. MUH.	\$300

**REMEMBER WE TAKE ALL MAJOR CREDIT CARDS**

322	U	1902 horiz strip of 3, Cowan paper, no wmk, with double perfs & tear in 1 stamp. CP G4d. Cat \$1350. FU.	\$500
323	M*	1904 rose-carmine mixed perfs Dot plates, upper right corner block of 42 (top row of 9, next 3 rows 11), showing arrow at top & sheet No: 1159032. A scarce plating multiple. SG 351. Cat £1764. Fine mint, nearly all MUH.	\$900
324	M	1904 Dot plate mint seln (30) comprising: p14 (21 incl 3 blocks of 4, block of 6); p11 x14 block of 4 & single; mixed perfs LR corner block of 4. Generally fine. SG 349-51 group.	\$600
325	M	1905 Dickie machine coil strip of 4, dot plate, no rouletting. CP GS1a/2a. Cat \$1000. Mint.	\$300
326	U	1906 horiz pair, Royle plate, p11, "Loose Letter" cancel, very light stain RH stamp. CP G10b(1). Cat \$1500. GU/FU.	\$600
327	M	1906 Royle plate, p14 x 14½ comb, 1d bright rose-carmine mint block of 4 & horiz strip of 4, cancelled by 2 Pukenui 1906 squared circle d/s & 1d rose-carmine mint horiz pair. SG 360, 360a. Cat £750.	\$375
328	M	1906 Waterlow mixed perfs (p11 at base, others p14). CP G9e. Cat \$1000. Mint.	\$500
329	P	1906 Waterlow unit trial proofs, 2 imperf horiz strips on wove paper, strip 4 (BBCB) in green, unit "C" invtd, strip of 5, "CCBCC" unit "B" invtd.	\$875

### **King Edward VII**

330	/	1909-16 specialised accum of 92 on 6 annotated (perfs, wmk) pages. Noted: 3d p14 x 13½ mint & FU, 6d m & FU, 8d m x 2 FU & GU; p14 line on pictorial paper 8d m & FU & 8d GU no wmk variety. CP cat \$4400+. Mint & used.	\$750
331	M*	1909 set to 1/- in blocks of 4 (1d Dominion, 5d & 1/- each have 1 stamp LH mint). Jury cat approx \$4100. Mint/MUH.	\$875
332	/	1910 3d 2 perf pair FU, also similar pair mint. CP H3e. Cat \$1950.	\$575
333	M*	1910-1915 6d horiz block of 6 (5 MUH/1mint), p14 x 14½, also upper selvedge block of 4 MUH p14 x 13½ - latter one with small blemish. CP H6b, H6c. Cat \$4200.	\$950
334	M*	1915-16 3d, 5d, 6d, 8d, p14 x 13½, comb blocks of 4, 6d light crease. SG 401-4. Cat £760. Mint/MUH.	\$450
335	M*	1915-16 p14 x 13½ seln of 3d, 5d, 6d, 8d mint. Two perf pairs 5d & 6d mint. 3d two perf left selvedge pair MUH. CP cat \$3300.	\$850
336	/	1915 3d, p14 x 13½, upper selvedge single MUH, also block of 4 (2 mint/2 MUH), & similar but official single mint & also GU/FU. CP cat \$3050.	\$575
337	*	1915 3d bistre-brown horiz pair with top selvedge, p14 x 13½. CP H3c. Cat \$1200. MUH.	\$600

### **1d Dominions**

338	/	1909-26 specialised accum of 63 mint & used on 9 annotated pages. Noted 1909 m&u broken globe, ships bow split & "Q" flaws; 1924-5 Jones feather flaw used & thicker paper mint x 2; 1925 DLR unsurfaced paper brownish gum mint x 2 & FU; 1925 Cowan broken flaw m&u, feather flaw used x 2, broken globe flaw used x 2; 1926 Cowan reversed wmk broken N flaw used; block of 6 with partial offset on back of 3 stamps. CP cat \$3640+. Mint & used.	\$500
-----	---	--	-------

### **King George V**

339	/	1915-27 specialised accum of 109 recess, 58 surface & 12 Field Marshal/Admiral stamps on 17 annotated (perfs, wmk) pages. Noted: recess p14 x 14½ 5d m x 2 & FU x 2, d m & FU, 7½d m & p14 FU/GU; p14 (line) pictorial paper 2d yellow m & FU, 6d m & FU (CTO), surface 1½d brown WT m & GU, p14 x 15 2d Art paper (litho) m & FU, 2d Cowan horiz pair with offset on back MUH (hinge on selvedge, tone spot on 1), 3d Jones m x 2 & GU/FU, 2/- Admiral Jones & Cowan m & GU, 3/- Admiral Jones & Cowan m. CP cat \$6600+.	\$1,000
340	/	1915-30 accum of 37 2 perf pairs on 4 pages. 1½d & 2d violet blocks of 6 (2 MUH & 1 mint vert pair); 2d yellow, 2½d, 3d, 4d yellow, 4d violet, 4½d, 5d, 6d, 7½d, 8d blue, 9d & 1/- blocks of 4 (each 2 vert pairs mint except 4½d - hinge on selvedge) & 5d pairs MUH; 1½d, 2d violet & 2½d vert pairs with CTO cancels; 4d yellow FU; 6d panel cancel x 2 pairs (vert block of 6); 6d blue FU. CP cat \$9350+.	\$1,750
341	/	1915-c1933 ½d to 3d surface specialised mint & used colln on annotated pages incl officials: ½d x 5 used; 1½d local plate x 11 u & 2 m; officials 7 u & 6 m (incl blk of 4 MUH); 1d London plate proofs x 8 (incl blk of 4), 64 u & 7m (incl blk of 4), officials 7 u & 4 m; 1½d brown 95+ u & 18 m (incl several Cowan & WT papers), officials 34 u & 12 m (incl blk of 6 MUH); 2d x 3 plate proofs 125+ u, 18 m, officials 14 u & 17 m; 3d x 2 plate proofs, 44 u, 11 m, officials 6 u. Nice range shades, some pmks, perfs, papers etc. Also several contemporary items incl 3d & 6d Victory plate proof pairs & several EVII era items (incl 4d yellow blk of 4 MUH).	\$1,250

342	U	1915 1½d (Pictorial paper), 2d violet, 2d yellow, 3d, 4d, 4½d, 6d, 8d, 9d 2 perf pairs. CP cat \$5075. FU CTO cancels.	\$675
343	U	1915 4d yellow block of 6 with RH selvedge, incl 3 2-perf pairs (1 of which has plate 20 R4/10 re-entry). CP K5c/z. Cat \$2000. FU.	\$800
344	*	1916 6d Pictorial paper x 2 blocks of 12, sideways wmk. 1 block (4 x 3) shows top row of 4 with no wmk (or just touching from adjacent stamp) with wmk in selvedge, other block 3 x 4 with LH selvedge. CP cat \$500 each. MUH.	\$400
345	U	1927 6d carmine-lake, p14 x 13¼, well centered, heavyish cds. CP K8a(8). Cat \$2650. FU.	\$1,250
346	M	1927 6d carmine-lake, p14 x 13¼, well centered. RPSNZ cert (2012). CP K8a(8). Cat \$1600. LH mint.	\$750
347	*	1927 2/- Admiral upper left corner block of 4, Cowan paper, light selvedge crease just affects one stamp also. CP K20b. Cat \$1800. MUH.	\$575
348	M*	1927 3/- Admiral block of 4, Cowan paper. Jury cat \$1650. 2 mint, 2 MUH.	\$575

### **1935 Pictorials**

349	/	1935-44 specialised accum of 150 mint & used on 14 annotated (perfs, wmk) pages. Noted: 2/- & 3/- mint & FU (p13-14 x 13½ single wmk, p13½ x 14 single wmk, p13-14 x 13½ mult wmk, p12½ mult wmk, p13¾ x 13½ mult wmk, 9d p14 x 15 single wmk m&u, 2/- p13-14 x 13½ mult wmk COQK flaw MUH (hinge on selvedge) & 2/- horiz strip of 3 p12½ for part paper COQK flaw & hat retouch MUH (hinge on selvedge). CP cat \$3540+.	\$500
350	*	1935-6 ½d, 1d, 1½d, 3d, 4d, 6d invt wmk all in blocks of 6 (3d block of 4). 1½d invt & reversed wmk (1 toned perf), 3d, 4d & 6d (mult wmk fine paper). CP L1az, L2az, L3c, L6bz, L7bz, L9bz. Cat \$3240. MUH.	\$600
351	M*	1936 1d Kiwi p13½ x 14 temporary perfs, lower R/H corner vert block of 12. Top middle stamp hinged. CP L2b. Cat \$3450. Mint/MUH.	\$875
352	*	1936 3/- Mt Egmont with LH selvedge, invtd multiple wmk, p14-13 x 13½. CP L14dz. Cat \$360. MUH.	\$190
353	*	1941 9d red & black block of 4, p14 x 15, single wmk. CP L11d. Cat \$1000. MUH.	\$500
354	*	1942 5d, 2/-, 3/- lower R/H corner vert blocks of 20 (4 x 5) plus 5d & 2/- lower selvedge blocks of 4 & 3/- plate block (No 1) of 4. Coarse paper, p13¾ x 13½. CP L8f, L13g, L14f. Cat \$2368. MUH.	\$525

### **King George VI**

355	M*	1938-53 plate block colln on 25 annotated pages: ½d brown x 6, 1d red x 12; 1d green x 41; 1½d chocolate x 3 (20, 21 & imprint) + booklet pane invt wmk; 1½d red x 10 + 2 booklet panes; 2d x 16; 3d x 7; 4d x 2; 8d x 1; 1/- x 1; 1/3d x 3; 3d x 3; 3d on 1d x 3 & 1d on ½d. Various papers, no apparent dupn, some minor blemishes. Mint (some MUH), good CV.	\$700
356	*	1947 3/- lower quarter of sheet (10 x 4), plate 2-1 Row 15/4 & 16/6 show no signs of various stages of plate flaws or re-entries discussed by CP. This appears therefore to be pre-flaw stage. According to CP, only one block with 15/4 in pre-flaw stage has been identified, this presumably a 2nd. Exhibition piece. CP M16a var. MUH.	\$1,500

### **Queen Elizabeth II Pre-decimal**

357	/	1953-61 accum of 64 mint & used on 6 pages. Noted: 1953-7 set to 10/- m & FU & 2d Stars error MUH & FU. Also incl 98 GVI m & u on 6 pages incl m & FU sets to 3/- & plate blocks (1/- plate 1-1 block of 12 with R15/2 flaw, 1/3d plate 3A-2 block of 8, 2/- plate 1-1 block of 4 & 3/- plate 3A-1 block of 12) mint/MUH. CP cat \$1680.	\$500
358	*	1954-5 QEII definitives original set to 10/-, large figures set. 1958-64 provisionals all in blocks of 9 (except 2/6d - 10/- top selvedge blocks of 4 & provisional blocks of 16). 2/6d-10/- plate blocks of 4. 1954 QEII officials to 3/- incl provisionals in blocks of 4. Cat \$4000+.	\$1,050
359	M*	1958 2d QEII Stars ovpt error block of 4, 1 stamp lightly hinged. Mint/MUH. With normal block of 4. Jury cat \$1150.	\$375
360	/	1958 2d on 1½d QEII Stars ovpt error horiz block of 6. Cat \$2450. MUH, plus singles MUH & FU.	\$1,000
361	*	1958 2d QEII Stars ovpt error block of 4. Jury cat \$1200. MUH.	\$450
362	/	1960-6 Pictorials specialised accum of 750 mint & used on 39 annotated pages. Incl set of 23 m&u, 10 Chambon perf blocks, ½d with blue colour omitted FU, 2d R3/1 "ZFALAND" flaw MUH & FU, 2½d (2 MUH blocks of 6 with diff major colour shifts, MUH block of 6 with partial double perfs), 4d chalky paper FU & 1/3d MUH block of 4 with brown colour shift. Also incl seln of 186 m&u 1967-9 Pictorials (incl \$2 Geysers m&u) & separate accum of 550 (1960) & 600 (1967) used stamps (mainly up to 4d/3c values) with minor plate flaws. CP cat \$2500+.	\$500

363	*	1960 1d Karaka vert strip of 4 with selvedge with top 2 stamps with yellow colour (berries) omitted. MUH except for bottom (normal) stamp with hinge mark. CP O2a(z). Cat \$2500. MUH.	\$1,000
364	/	1960 3d Kowhai colour seln: 1) yellow colour (petals) omitted FU with normal & colour partially missing for comparison; 2) brown colour (branches) omitted vert strip of 4 with selvedge MUH with top 2 stamps normal, 3rd stamp brown partially missing & fully missing on 4th; 3) green colour (leaves) omitted vert strip of 3 MUH top stamp normal, middle green partially missing & fully missing on 3rd. CP O5a(z),(y),(x). Cat \$1350+. MUH/used.	\$750
365	*	1960-6 10/- Glacier, chalk paper lower L/H corner vert plate blk of 25 & blk of 6; £1 Geyser lower L/H corner horiz blk of 15 & horiz lower selvedge strip of 5. Jury cat \$1920. MUH.	\$425
366	M	1965 4d Flower (Puarangi), chalk-surfaced paper, paper adhesions on back. RPSNZ cert (2018). CP O6b. Cat \$2000 as MUH. Mint.	\$700
367	*	1965 4d Flower (Puarangi), chalky paper. SG 786d, cat \$950. CP O6b, cat \$2000. RPSNZ cert (2011). MUH.	\$1,250

### ***Decimal***

368	*	1970-4 Pictorials specialised accum of 1350 mint & used (mainly mint blocks) on 81 annotated pages. Noted: 8c block of 12 with 2 chestnut colour omitted, 10c Royal (Coat of Arms) varieties (silver omitted, red omitted, perf misplacement - two blue border lines at top, deep blue colour offset on back), 20c major black colour shift, 25c x 12 diff plate blocks, 30c x 10c diff plate blocks, 50c foreshore & headland on right omissions, 4c on 2½c varieties (misplaced surcharge with 4c at lower left, albino surcharge, plate block of 10 with yellow colour shift), value blocks x 10, plate blocks x 10, FDC). CP cat \$3250+. MUH.	\$750
369	*	NZ 1970-4 Pictorials seln of major errors (7 items) & incl ½c Butterfly all colours offset; 4c Moth (missing veins x 3), wing veins major shift block of 4; 10c Coat of Arms silver offset (wmk paper), red ribbon missing & double blue lines at top; 50c Abel Tasman R/H headland missing. CP cat \$1200+. Also several other minor errors.	\$500
370	*	1971 4c Moth horiz strip of 3 booklet stamps with LH binding selvedge, missing dark green (wing veins), sideways wmk. CP P6bz. Cat \$2250. MUH.	\$650
371	*	1971, 1975 50c Abel Tasman 2nd print, right headland omitted. 1975 4c Rose imperf horiz pair with selvedge. CP PA19az(1), PA4aY. Cat \$600. MUH.	\$190
372	*	1973 1c Red Admiral butterfly half sheet block of 100 incl 11 stamps with blue colour (spots on wings) omitted & 4 stamps with blue colour partially omitted. CP P2c(Y). Cat \$3300+. MUH.	\$750
373	*	1973 4c Moth error upper horiz strip of 8 (R1/1-8), light green colour omitted on 1st 3 stamps (these alone cat \$1200), partially omitted on next 4 & R1/8 is normal, no wmk, PVA gum. CP P6c(Y). Cat \$1200+. MUH.	\$500
374	*	1973 4c Puriri Moth colour missing seln: 1) dark green (wing veins) omitted; 2) light green omitted; 3) purple-brown omitted; 4) blue omitted; 5) yellow omitted (bluish gum). Also incl single with mottled blue, block of 15 with yellow colour shift & various FU dark green colour shifts. CP P6c(Z),(Y),(X),(W) & (I). CP cat \$1685+. MUH.	\$800
375	*	1973 10c QEII Coat of Arms block of 4 with LH selvedge, rosine colour (hair ribbon) omitted, no wmk. CP P12bz. Cat \$600. MUH.	\$300
376	*	1974 8c John Dory (fish) block of 4, black colour shift 2½mm downwards ("John Dory" in lower margin, fins over "8c"), no wmk. CP P11bu. Cat \$1000. MUH.	\$600
377	*	1974 8c John Dory, missing blue-green colour error with normal. Spectacular. CP P11bx. Cat \$600. MUH.	\$400
378	*	1988 80c Fiordland Crested Penguin vert block of 6 with sheet selvedge at right. Spectacular perforating error with middle strike of comb head displaced 7mm down & 4mm to the right, resulting in top 2 stamps each with "80c" twice & middle 2 without face value. Also 1964 3d + 1d Health (Little Blue Penguin) selvedge block of 4 with displacement of blue 1.5mm downwards. Striking. MUH.	\$400

## **NEW ZEALAND - AIRMAIL**

379	*	1931 5d green lower left corner vert block of 15 & horiz strip of 3. Rusty paper clip marks affect selvedge & just lower left stamp. Jury cat \$1260. MUH.	\$275
380	C	1934 7d Trans-Tasman FDC, canc (initially) Christchurch cds 17 JA 34 (typed address, to WH Stagg), on printed "Faith in Australia" flight cover (carried on flight from Auckland 17 FE 34 & returned by surface mail). Fine. Scarce as FDC. Jury cat \$750.	\$400



## NEW ZEALAND - COMMEMORATIVES

381	/	1906-67 specialised accum of 490 mint & used on 53 annotated pages. Incl complete series of m&u commem sets (incl Christchurch, Auckland & Dunedin Exbns, Victory, 1931-4 Airs). Noted: Christchurch/Auckland Exbn sets mint (Chch 6d & Auck used set CTO cancels), 1925 Map Cowan print m x 2 & FU, Dunedin Exbn 4d "POSTAGF" flaw (no full stop) CTO, Kingsford Smith R7/7, R9/5, R10/9 & R10/10 flaws & plate blocks MUH, Red Cross R13/6 scratch on flag flaw (cv \$275) & retouch MUH. CP cat \$6950.	\$1,000
382	*	1906 6d Christchurch Exbn, sideways reversed wmk, o/c to top left. CP S4a(z). Cat \$1100. MUH.	\$600
383	U	1906 Christchurch Exbn set of 4, all with "3 JA 07" Exbn cancels. Rare matched set. Jury cat \$850. FU.	\$600
384	M*	1906 Christchurch Exbn set in blocks of 4. ½d, 1d, 3d MUH, 6d mint (½d & 1d 2 stamps each light crease). Jury cat \$4400.	\$1,050
385	*	1906 Christchurch Exbn set in blocks of 4, minor gum buckling. Jury cat \$6000. MUH.	\$1,350
386	C	1913 Auckland Exbn set on cover, "EXHIBITION AUCKLAND 7 AP 14" pmk.	\$950
387	C	1913 Auckland Exbn set on registered cover, "EXHIBITION AUCKLAND 21 FE 1914" pmk. Scarce as reg'd cover, some ageing on cover. FU.	\$1,150
388	U	1913 Auckland Exbn set on piece, pmk "EXHIBITION AUCKLAND 18 AP 14" (last day Exbn was open). Jury cat \$1300. FU.	\$575
389	M*	1913 Auckland Exbn set in blocks of 4 - 1½d & 6d MUH (6d top 2 stamps light crease); 1d & 3d 2 mint/2 MUH. Jury cat \$6920.	\$2,000
390	*	1913 Auckland Exbn set in blocks of 4, superb! Jury cat \$8000. MUH.	\$3,000
391	*	1913 Auckland Exbn set in blocks of 4 (minor adhesion 1 x ½d). Jury cat \$8000. MUH.	\$3,000
392	M*	1913 Auckland Exbn set in blocks of 4, 6d centred to foot, few short perfs. Jury cat \$5600. 2 Mint/2 MUH.	\$1,900
393	P	1920 Victory set of 6 imperf plate proof pair in issued colours & issued gummed wmk paper. ½d, 1½d & 3d vert; 1d, 6d & 1/- horiz. CP S9PP-S15PP. Cat \$750.	\$700
394	/	1925 Dunedin Exbn accum of various collns incl p/cs. Wonderful opportunity to start specialised colln. Quantity of ½d, 1d & noted: 4d x 13 FU, 71 mint & 7 covers incl 2 x First Day. 4d alone Jury cat \$10,000+. Also book "Official Record of South Seas Exhibition" & official souvenir catalogue & 2 small photo albums (1926).	\$3,800
395	M*	1925 4d Dunedin Exbn L/L corner vert pair incl "POSTAGF" flaw (R10/1). Flaw stamp unhinged. CP S17c/x. Cat \$290. Mint/MUH.	\$80
396	*	1925 4d Dunedin Exbn block of 8 including "POSTAGF." flaw & horseshoe flaw (R2/2). Also 1d x 8, ½d x 3. Jury cat \$1325. MUH.	\$375
397	C	1925 Dunedin Exbn set on typed addressed FDC, Dunedin Exbn machine cancel. Cat \$450.	\$190
398	*	1925 Dunedin Exbn set x 13, occasional fault but generally fine. Jury cat \$2236. MUH.	\$600
399	M*	1940 Centennial set in blocks of 4, Officials set blocks of 4, plus single officials set (mint). Jury cat \$2415. MUH/mint.	\$750
400	M*	1940-4 Centennial set of 14 incl 10d plate blocks of 4 (1/- strip of 4) mint, 1/- MUH. Also 1/- part imprint plate block of 4. Virtually all items have vertical fold between pairs. CP cat \$2060.	\$350
401	M*	1963 2½d Christmas, 2 blks of 4 with striking partial missing colours: (a) half of blue sky missing on right 2 stamps, giving impression of rain shower; selvedge at right, top 2 stamps hinged, other error stamp with black ink mark on back; (b) 1.5cm vert band of red missing from left 2 stamps, selvedge left & bottom with imprint, gum disturbed on 3 stamps incl the 2 error ones. CP cat approx \$2000. Mint/MUH.	\$750
402	M*	1965 4d Anzac vert sheet No (179589) block of 30 (3 x 10) showing 2 doctor blade flaws in 1st column & 1 in 3rd column; & partial dry prints/blurred impressions on many. A most interesting error piece. Mint/MUH.	\$1,000
403	M*	1969 3c Law Society block of 4 double blue together with 11mm vert shift, top pair hinged. CP S115az. Cat \$2400. Mint/MUH.	\$750
404		1971 10c One Ton Cup Geoff Fuller 15.1 x 8.5cm hand painted colour wash essay on 18.2 x 11.7cm white card, this was similar to the accepted design for the 8c stamp.	\$400

405	*	1981 20c Royal Wedding vert strip of 4 (2 setenant pairs), silver-grey inscription shifted 2mm upwards. CP SP276/7y. Cat \$700. With normal vert pair. MUH.	\$300
406	*	1984 70c Whakapapa Ski field major error: quintuple black colour printed! Also, other colours are out of register, lower selvedge example with normal for comparison. This error not previously recorded. Scarce. MUH.	\$500
407	*	1986 25c Police Centenary setenant strip of 5, brownish cream & brown colours (upper half of each stamp) 3½mm upward shift. CP SP330-4z. Cat \$500. MUH (with normal).	\$230
408	*	1986 25c IYP vert block of 12 (6 setenant pairs) with lower selvedge incl part imprint inscription, very dry print of one Dove stamp (R6/4) & very small part next stamp (R5/4). Apparently only 1 sheet known. MUH.	\$600
409	*	1992 \$1 Olympics (equestrian) perf shift 8mm upwards. Spectacular (with normal). Noted by CP. MUH.	\$275
410	*	2004 Olympic Games horiz strip of 5 (45c, 90c, \$1.50 x 2, \$2), an incredible self-adhesive hologram error, with rouletting neatly separating Ian Ferguson from Paul MacDonald on 1st \$1.50 stamp which straddles 90c & 2nd \$1.50 stamp, backing paper hinged. MUH stamps.	\$850
411	P	2004 Olympics set of 4 holographic proofs in uncut blocks of 4.	\$700
412	*	2006 45c Kapa Haka (Maori Performing Arts) self-adhesive, x 2 adjacent on same piece of coil backing strip. Not officially "issued". Jury cat \$5000. MUH.	\$2,000

## NEW ZEALAND - HEALTH

413	/	1929-77 accum of 680 mint & used on 63 annotated pages. Incl 1929-57 m & FU singles, 1958-77 m & FU pairs, complete series of 1957-77 m/ss MUH (hinged on selvedge), plate blocks for 1943, 1963 & 1970 issues MUH/mint & various flaws incl 1963 3d bloodstained finger flaws. Also incl 220 m&u 1960-77 Xmas m & FU pairs (excl 1960), 1969 & 1977 plate blocks & 1977 10c flaws. CP cat \$3100+.	\$750
414	/	1929-66 pre decimal colln on annotated pages, incl all issue mint & used (a few earlies some toning but Red & Blue Boys okay); m/ss complete both mint & FU. Also incl 1959 3d red legs shift mint (horiz pair) & FU.	\$500
415	C	1929-33 FDCs x 4 (all plain): 1929 Nurse, canc Auckland slogan machine d/s 11 DEC 1929 (minor back adhesions); 1930 Nurse, canc Whakatane cds 29 OC 30; 1932 Hygeia, canc Wellington cds 18 NO 32; 1933 Pathway, canc Dunedin slogan machine d/s 8 NOV 1933. Very good to fine condition. A scarce lot. Jury cat \$2600.	\$1,500
416	M*	1929-2004 colln in L/H s/b incl: 1929-40 mint (Blue Boy minor back fault), later issues complete MUH (incl 1957-2004 m/s complete MUH). Jury cat \$1700. Mint/MUH.	\$650
417	C	1929 Nurse FDC plain cover, printed address, canc 2 x Christchurch cds 11 DE 29. Very fine. Ex Horrell. Jury cat \$900.	\$600
418	C	1930 Nurse block of 4 FU on plain reg'd FDC to Verne Collins & Co (typed address), canc Christchurch Registered cds 29 OC 30. Very fine. Ex Horrell. Jury cat approx \$1100.	\$600
419	M*	1931 Red & Blue Boys blocks of 4, faint gum bends on 2d. Jury cat \$2775. Mint/MUH (Blue boy 3 mint).	\$950
420	C	1931 Red & Blue Boys set of 2 on fine FDC (plain), each canc Highfield cds 31 OC 31, to USA (typed address). Fine & rare. Ex Horrell. Jury cat \$5000.	\$4,000
421	C	1932 Hygeia FDC (plain), canc Christchurch cds 18 NO 32, typed Verne Collins & Co address. Fine. Ex Horrell. Jury cat \$600.	\$350
422	C	1933 Pathway FDC, printed with "Kiwi Exchange Club" endorsement, canc Dannevirke cds 8 NO 33, to USA (receipt b/s 5 DEC). The first printed NZ Health FDC. Illustrated in Jones cat as H33.1A (P6). Rare (Jones records 8 examples, ex total 50 printed). Fine & rare. Ex Horrell.	\$1,500
423	C	1933 Pathway FDC (plain), canc Christchurch "Buy Health Stamps for Health Camps" slogan machine d/s 8 NOV. Rubber-stamp cachets "First Day Cover" (on front) & "Frank A. Cook Stamp Dealer ..." (on back). Ex Horrell. Jury cat \$400.	\$250
424	C	1934 Crusader FDC (plain), canc Wellington cds 25 OC 34 3PM (date clear). M/s address "C. Weinstein, c/o C.P.O, Wellington". Receipt "Wellington Delivery" cds 25 OC 34 3.45PM (on back). FDCs ex other towns outside Wellington were dated 26 OC 34 as supplies of the stamp were not received until then. Fine & rare. CP cat \$4000, ACS \$4500 for Wellington FD cancellation. Ex Horrell.	\$3,000
425	C	1934 Crusader on plain cover tied by Highfield 26 OC 34 cds - the non Wellington FDI. Ex Horrell. CP T6a. Cat \$310.	\$200

426	C	1935-7 extensive specialised colln of 94 diff pictorial/printed FDCs incl many scarce or rare arranged according to Jones catalogue (but not annotated). Noted 1935 Keyhole x 7 incl Jones H35.1C, 1D (rated 8/10 rarity), 1Ba, 1E (both 7/10); 1936 Lifebuoy x 33 incl H36.1T, 1V (rated 9/10) & 1 unlisted, 1P, 1Q (8/10), 1BA.1, 1M, 1N (7/10), 1K, 1L (6/10); 1937 Hiker x 54 incl H37.1M (V - rated 9/10), 1I, 1SA, 1SB, 1AB (8/10), 1K, 1NB, 1OA, 1P, 1AA (7/10) & 16 various rated 6/10. Almost all fine. Excellent range. Ex Horrell.	\$2,200
427	C	1935-58 hand-drawn or painted personalised Health FDCs x 20 diff incl: 1935 (text, with publicity cinderella); 1937 Waikaremoana scene by Frank Kee (to Canada); 1939 Karl Lewis scene; 1943 x 2 scenes of children by Kee (addressed to his sons); 1944 cartoon by "Hop" attached; 1946 x 4 diff (3 of children by Kee & "cross" motif as Jones H46.D1AA-AB); 1947 tui & tent (ex N Benn), palm (ex H Duke); 1951, 1953, 1954 scenes by H Purdon; 1954 x 2 (fishing off Rangitoto; swallow); 1958 Yachting by Kee; 1959 x 2 (ducks by Kee, set of m/s). Rare & attractive colln, put together over many years, incl items possibly unique. Fine cond. Ex Horrell.	\$2,500
428	C	1938-41 extensive specialised colln of 93 diff pictorial/printed FDCs incl many scarce or rare, arranged according to Jones cat (but not annotated). Noted 1938 x 35 incl Jones H38.1P (rated 8/10); 1O, 1Q, 1R (7/10); 1H, 1IB, 1N, 1T (6/10). 1939 x 26 incl H39.1F (rated 10/10), 1H, 1K (9/10), 1G (8/10), 1I (6/10); 1940 x 16 incl H40.1F, 1G (rated 9/10), 1D (6/10); 1941 x 16 incl H41.1C (rated 8/10), 1H (7/10), 1B (6/10). Almost all fine. Excellent range. Ex Horrell.	\$1,250
429	C	1942-5 extensive specialised colln of 124 diff pictorial/printed FDCs incl many scarce or rare, arranged according to Jones cat (but not annotated). Noted 1942 x 15 incl Jones H42.1G (rated 9/10), 1D, 1F (7/10), 1E (6/10); 1943 x 33 incl H43.1FB, 1NB (9/10) & 2 unlisted, 1K (8/10), 1H (7/10), 1D (6/10); 1944 x 38 incl H44.1EAb, 1K (9/10) & 2 unlisted, 1G, 1J (8/10), 1AC, 1H, 1I, 1N (7/10); 1945 x 38 incl H45.1RA (10/10) & 2 unlisted, 1FB, 1M, 1Q, 1RB (9/10), 1FAA, 1NA, 1NB, 1K, 1O, 1W (8/10), 1E2, 1NB2, 1T (7/10), 1GB, 1HAB, 1J (6/10). Almost all fine. Excellent range. Ex Horrell.	\$1,000
430	C	1946-9 extensive specialised colln of 108 diff pictorial/printed FDCs incl many scarce or rare, arranged according to Jones cat (but not annotated). Noted 1946 x 34 incl H46.1A (rated 10/10) & 1 unlisted 1PB (9/10), 1DAB, 1F, 1N, 1Oa,b (8/10), 1ACA, 1DAAb, 1G, 1I (7/10), 1CPim, 1E, 1L, 1T; 1947 x 20 incl H47.1JB (8/10) & 1 unlisted, 1AB, 1F, 1JA, 1K (7/10), 1IA (6/10); 1948 x 30 incl H48.1N (9/10) & 1 unlisted 1GB, 1O (8/10); 1949 x 24 incl H49.1FAB (9/10), 1DB, 1LA (8/10), 1JAb, 1K (7/10), 1DBB (6/10). Almost all fine. Excellent range. Ex Horrell.	\$1,000
431	C	1950-64 extensive specialised colln of 196 diff pictorial/printed FDCs incl numerous scarce or rare, arranged in 2 albums according to Jones cat (but not annotated). Noted 1 rated 10/10 rarity (H52.1I); 3 x 9/10 (H52.1H, H59.1A(V) missing colours & similar (unlisted) major colour shift - to same address); 12 x 8/10 incl H50.1GAA, 1EA2, 1IB but unlisted larger size, 1MB, H51.1Qa-b, unlisted 1953 "Glenelg Souvenir Cover", H54.1G; 12 x 7/10 incl H50.1N, H52.1Ga, H53.1FAB, H54.1AB, H54.1E. Also several (4) FDC sets with m/ss 1958-64 (all rated 7/10 or 8/10). Almost all fine. Excellent range. Ex Horrell.	\$1,500
432	C	1957-75 m/s FDCs x 28 diff (most with 1 m/s per cover), complete run except for 1959 Birds. Health Camp FDI cds on 1957, 1958, 1960, 1962, 1964, 1967, 1970, 1972, 1975 (others with regular town or FDI cds). Pictorial covers for 1957-8, 1962, 1967-8, 1971, 1975 (balance are plain). Generally fine. Difficult to assemble. Jury cat \$3180.	\$1,500
433	C	1959-71 m/ss on FDCs, each year apparently complete set of Health Camp cancels (1959 - 4 sets; 1960 - 6; 1970 - 5; 1967-9, 1961 - 6 sets). Most on separate FDCs, some years combined. 1962-3 Pictorial covers, rest plain. All same addressee, some typed & others hand addressed. Some covers minor creasing. A seldom seen assemblage. Very high CV.	\$1,500
434	*	1965 4d Fantail m/s partial black offset ("New Zealand & value") MUH. (Full offset CP M37bx cat \$3000). Also normal 3d Kaka m/s. The pair of m/s with original glassine Croxley packet.	\$750
435	*	1989 80c Princess Beatrice top right corner value block of 16, clear double black (2nd fainter approx 1mm upwards). MUH.	\$1,000
436	*	1996 40c Teddy Bear sheet error, with normal for comparison. Jury cat \$1500. MUH.	\$750

## NEW ZEALAND - OFFICIALS

437	U	1907-1961 seln of 200+ used on pages. Noted 1907 Pictorials 2/- & 5/- GU, QVLT 5/- & £1 FU, GV 8d brown GU, 2/- Admiral FU, 5/- Arms vert & horiz ovpts FU & 1940 Pictorials 3d joined ffs. Near complete except no EVII.	\$1,150
438	/	1907-63 specialised accum of 320 mint & used on 29 annotated (perfs, wmk) pages. Noted 1907 Picts 2/- & 5/- p14 GU/FU, EVII 6d, 8d & 1/- p14 x 14½ m & FU, GV recess (3d 2 perf pairs MUH & m from block of 4, 3d pictorial paper p14 m & FU; 8d, 9d & 1/- p14 x 13½ m & GU/FU), GV surface (1½d brown Cowan p14 & p14 x 15 m & FU, 3d Cowan p14 m & FU), 1d Field Marshal no stop after "Official" m & GU/FU, 2/- Admiral m & GU/FU, 1940 Centennials the 8 stamps with "ff" in official joined in pairs (2½d is strip of 3) MUH & FU (6d MUH pair toned), QEII set m & FU. CP cat \$10,380.	\$2,000

439	M	1907 3d, 1/-, 2/-, 5/- Pictorials. Jury cat \$1375. Mint.	\$750
440	M	1907 6d Kiwi pink horiz pair, p14, imperf vert, well centered, slight vert crease between stamps. Very rare as only 1 pane believed to have existed. Ceremuga cert (2020). CP EO14g(z). Cat \$4500. Mint.	\$2,000
441	*	1907 6d Kiwi, original design. Jury cat \$1700. MUH.	\$1,000
442	*	1907 6d Kiwi reduced block of 4. Jury cat \$6000. MUH.	\$2,300
443	*	1907 1/- Kaka block of 4. Jury cat \$3000. MUH.	\$1,150
444	*	1907 5/- Mt Cook, sideways wmk, well centered. CP EO21e. Cat \$1250. MUH.	\$750
445	M	1907 Pictorials "set" of 8 - ½d, 2d, 3d, 6d (original & reduced), 1/-, 2/- & 5/-. Jury cat \$2600. Mint.	\$1,250
446	M	1908 2/-, 5/-, £1 QVLT. 2/- blunt corner, £1 patchy gum. Jury cat \$2400. Mint.	\$750
447	*	1908 5/- QVLT. Jury cat \$600. MUH.	\$300
448	*	1908 £1 QVLT, unsurfaced paper, well centered, Wellington horiz roller cancel. CP ZO15f. Cat \$1500. FU.	\$500
449	U	1908 £1 QVLT unsurfaced paper, well centered, Wellington vert roller cancel. CP ZO15f. Cat \$1500. FU.	\$500
450	U	1908 £1 QVLT block of 4, unsurfaced paper, Wellington roller pmk. SG O72a. Cat £1800. FU.	\$1,350
451	M	1908 £1 QVLT, 1 toned perf. Jury cat \$2000. Mint.	\$450
452	*	1908 £1 QVLT. Jury cat \$6000. MUH.	\$4,000
453	*	1908 £1 QVLT unsurfaced paper, well centered with right selvedge. CP ZO15f. Cat \$6000. MUH.	\$4,000
454	*	1909 6d Kiwi reduced, p14 x 15, well centered. CP EO15c. Cat \$1800. MUH.	\$900
455	*	1909 6d Kiwi reduced, p14 x 15. CP EO15c. Cat \$1800. MUH.	\$750
456	M*	1909 EVII simplified short set of 5 to 8d incl 1d Dom in blocks of 4. 1d & 8d MUH; ½d, 3d & 6d mint/MUH (½d both MUH small tone spots). Jury cat \$1260.	\$600
457	U	1911 5/- Mt Cook, single upright wmk, well centered, Dunedin cds. RPSL cert (2011). CP EO21f. Cat \$2000. FU.	\$800
458	M	1911 5/- Mt Cook, single upright wmk, o/c large top margin, 2 light hinge marks. CP EO21f. Cat \$2500. Mint.	\$1,000
459	M	1913-5 5/- QVLT x 3 - p14, p14½ x 14 & p14 x 14½ (no stop after official var). CP ZO6g, ZO6h/z. Cat approx \$1200. Mint.	\$500
460	U	1915 3d GV recess double "OFFICIAL" ovpt, p14 x 13½. RPSNZ cert (2016). CP KO4az. Cat \$3000. FU.	\$1,000
461	M*	1915 8d, 9d GV block of 4. Jury cat \$1830. Mint/2 MUH.	\$575
462	*	1915 8d GV. Jury cat \$400. MUH.	\$250
463	U	1915 1/- GV block of 32 (4 x 8) with Foxton 7 DEC 35 cancels. Unusual multiple. GU/FU.	\$190
464	M	1915-25 2/-, 5/- QVLTs no stop after official. CP ZO2kz, ZO6hz. Cat \$1325 (MUH). Mint.	\$500
465	*	1916 8d EVII deep bright blue horiz block of 15 with RH selvedge rows 3-5 so incl 5 2 perf pairs & 5 p14 x 13½. CP HO7b1/d1. Cat \$2825. MUH.	\$575
466	*	1916 8d EVII indigo blue block of 4 with lower selvedge incl plate dot (I) at left (R9/7-R10/8), invtd wmk, p14 x 14½. Minor printing ink adhesion on gum of one stamp. CP HO7b1z. MUH (normal with cat CP \$3000).	\$1,500
467	U	1928 2/- Admiral horiz block of 6, canc Auckland East cds 25 MR 33. Small perf fault on lower right stamp. Jury cat \$1200. GU/FU.	\$230
468	*	1931 5/- Arms vertical ovpt. Jury cat \$1200. MUH.	\$600
469	M	1933 5/- Arms vertical ovpt (+ later horiz ovpt). Cat \$800+. Mint.	\$400
470	M	1933 5/- Arms, all 5 printings - vert official; WT single, mult & invt mult wmk; unsurfaced paper. CP ZO33a-e. Cat \$1120. Mint.	\$500
471	*	1933 5/- Arms green, vert ovpt, well centered. CP ZO33a. Cat \$1100. MUH.	\$600
472	M*	1935 Pictorials simplified set mint plus set excl 9d green ovpt in block of 4 mint/MUH. (Faults on 2 x 3d). Jury cat \$1950.	\$230
473	M*	1935 Pictorials simplified set of 12 (no 9d reduced) in MUH blocks of 4 (1½d x 6 - 1 stamp mint, 2/- 2 stamps mint). 2/- incl COQK flaw (mint), p12½, coarse paper. Also 1940 9d Centennial block of 4. Jury cat approx \$4000.	\$525

474	C	1938 GVI "Official" printed FDCs x 3 diff (each franked both regular defin stamp & "Official" ovpt version); ½d green, canc Gore cds 1 MR 38 (typed address); 1d scarlet, canc Wellington cds 1 JL 38; 1½d chocolate, canc Whangarei cds 26 JL 38. Also plain reg'd cover, franked GVI 1½d chocolate "Official" x 2 & 2½d Mt Cook "Official", canc Auckland East cds 26 JL 38. All fine. Scarce group (4). Jury cat c\$1000.	\$600
475	*	1938 GVI MUH accum in multiples/part sheets etc; 1d green x 120; 2d x 17; 3d x 355 (incl complete sheet of 240); 6d x 11; 8d x 43; 1/- x 79 & 2/- x 50. Cat \$8000+ simpl. MUH.	\$1,500
476	M	1940 1/2d-8d Centennial pairs, joined "ff" variety, set of 8. SG cat £695. Mint.	\$500
477	*	1940 ½d, 1d, 2d, 3d, 4d, 6d, 9d Centennial top selvage vert pairs, 2½d strip of 3. All containing joined "ff" varieties. All MUH (hinged in selvage apart from 2½d, ½d has faults). SG O141-49a. Cat £695.	\$450
478	M*	1940 Centennial set of joined "ff" pairs mint/MUH (all vert except 1d & 2½d), plus mint set. Cat £820. Ex Sir Gawaine Baillie.	\$500
479	M*	1940 Centennial set of joined "ff" pairs (2½d horiz strip of 3), hinged selvage only, & mint set. SG O146-51a. Cat £820. Ex Sir Gawaine Baillie.	\$500
480	*	1941-5 Pictorials accum/blocks/part sheets - 2d Whare LH side of sheet 120 (12 x 10) - plate 2B, p14 x 13½, coarse paper; 4d Mitre Peak blk of 30, irregular blk of 22 & pair all (blk of 30 p12½, others p14 x 13½ coarse paper); 6d Harvesting blk of 20 (4 x 5), p14½ x 14 coarse paper; 8d Tuatara horiz blk of 30 (10 x 3), p14 x 14½; 2/- vert blk of 20, p13¾ x 13½. CP cat \$9320. MUH.	\$1,750
481	*	1942 2d Whare complete sheet of 240 (folded into 4) - plate 2B, p14 x 13½, coarse paper. CP LO4f. Cat \$1491. MUH.	\$300
482	*	1942 4d Mitre Peak complete sheet of 80 (1 central horiz fold) - plate 2B, p14 x 14½, coarse paper. Incl R6/1 re-entry & shift markings in top selvage - 6 dots. CP LO7e/y/x etc. Cat \$3065. MUH.	\$1,000
483	*	1942 8d Tuatara complete sheet of 160 (1 central horiz fold) - plate 3, p12½, incl R13/10 broken "8" flaw but not R3/5 & R3/6 plate crack. Shift markings - 8 dots at top. CP LO10e/z/x etc. Cat \$7865. MUH.	\$1,500
484	*	1942 1/- Tui block of 30 (6 x 5) with top selvage, p14 x 13½, coarse paper, minor perf seps. CP LO12d. Cat \$2700. MUH.	\$600
485	*	1943 9d Panel black ovpt vert block of 40 (4 x 10) incl top selvage with part arrow markings. CP LO11e. Cat \$4800. MUH.	\$1,000
486	*	1943 9d Panel black ovpt vert block of 40 (4 x 10) incl top selvage with part arrow markings. CP LO11e. Cat \$4800. MUH.	\$1,000
487	*	1943 5/- Arms horiz ovpt x 2 vert blocks of 12 (3x4) - one top LH corner other with top selvage, WT mult upright wmk. CP ZO33c. Cat \$3000. MUH.	\$600
488	*	1944 2/- Cook top LH corner vert block of 8, p13¾ x 13½. CP LO13g. Cat \$1200. MUH.	\$500
489	*	1945 2½d Lilies complete sheets of 60 (4), plate 3 (reversed), p14 (comb). CP LO6b. Cat \$7680. MUH.	\$1,250
490	C	1946 ½d GVI chestnut "official" on plain CTO FDC (unaddressed, fine), with also regular ½d GVI chestnut, 1940 ½d Centennial & 1946 ½d Peace, canc Te Aro cds 1 JE 46. With photocopied extract ex Thackery (2004) stating only 4 FDCs seen (of which this is one). Fine & rare. Jury cat \$800.	\$500

## NEW ZEALAND - LIFE INSURANCE

491	/	1891-1976 Specialised accum of 305 mint & used on 36 annotated pages. Noted: VR: ½d p11 wmk sideways mint, 3d FU x 2, 6d FU & 1/- GU/FU; no VR: ½d p14 m, 1d blue p14 GU/FU x 3, 1d red p14 invtd wmk FU, 2d chestnut GU/FU x 2 (1 toned, 1 with blunt corner), 2d purple MUH, 2d yellow p14 invtd wmk GU/FU, 3d yellow-brown MUH, 6d p14 m& u x 2; 1969 4c plate block of 8 (scarce plate 2a2a) MUH (hinge on selvage). CP cat \$6000+.	\$850
492	M	1891 3d VR brown, o/c to right, patchy gum. CP X4a. Cat \$1000. Mint (not hinged).	\$500
493	M*	1891 3d VR brown MUH, 6d green VLH mint, 1/- mint (odd short perfs on this). Jury cat \$4800.	\$875
494	M	1891 6d VR green. Jury cat \$1100. VLH mint.	\$500
495	M	1891 6d VR green, o/c to top right. CP X5a. Cat \$1150. LH mint.	\$500
496	M	1891 1/- VR rose, o/c to left. CP X6a. Cat \$1800. HH mint.	\$800
497	*	1891 1/- VR rose, o/c, one corner pulled perf. CP X6a. Cat \$4500. MUH.	\$1,250
498	U	1891 VR set of 6, 6d badly pulled perf, 1/- o/c & slight toning. Jury cat \$850. GU/FU.	\$150
499	U	1891, 1905 & 1913 simplified sets (well above average condition). Jury cat \$1450. VFU.	\$700

500	/	1891-1981 range of mint/FU on leaves/Hagners. A nice range incl 1891 1/- mint/2 used; 1905 2 x 2d chestnut FU, 1947 set of 8 proof pairs.	\$4,000
501	*	1905 1d no VR blue. Jury cat \$1750. MUH.	\$1,000
502	M	1905-13 Simplified set of 10 (no 2d chestnut). Jury cat \$1000. Mint.	\$400

## NEW ZEALAND - POSTAL FISCALS

### QV Long Types

503	M	1878 1d blue Stamp Duty, minor faults; 1882 QVLTs 2/-; 2/6d rounded lower right corner; 3/-, 4/- (tiny back thin). Jury cat \$1725. Mint.	\$300
504	C	1882 1d lilac Stamp Duty (2) on cover to HJ Knowles Esq, Property Tax Department, Wellington, ex 22 May 1890 Christchurch. Scarce postal but philatelic use. These stamps remained valid for postage until demonetised on 31 December 1913. Odenweller cert (2016).	\$2,100
505	U	1882 6d red-brown, p11¾, NZ & star wmk. Fine oval barred "C" cancel. Genuine type cancel for 1882 era. CP Z1e. Cat \$750. FU.	\$400
506	U	1882 6d red-brown (2nd type), NZ & Star wmk, p11¾, o/c. Postal A in 6 bar obliterator cancel. Small stain on back. CP Z1e. Cat \$750. GU/FU.	\$350
507	M	1882-1926 2/- to 7/- (7/- oxidised to dark blue shade). Jury cat \$2825. Mint.	\$1,000
508	M	1882-1926 2/- to 10/- 10v (no 7/6d). Cat simpl \$5475. Mint.	\$2,000
509	M	1882-1926 3/-, 4/-, 8/-. Cat \$1725. Mint.	\$575
510	M*	1882-1926 4/-, 5/-, 6/-, 7/-, 10/- OG mint. (4/- is 1903 p11 unsurfaced paper, sideways wmk, rarely seen; 5/- MUH but minor gum tone). Jury cat \$3400. Mint/MUH.	\$1,250
511	M	1882-1926 15/-. Jury cat \$2500. Mint.	\$1,000
512	C	1886 2/6d on advertising envelope (featured on rear The Grand Hotel, Dunedin, New Zealand) bearing '4½' in red pencil on front to Germany, cancelled 28 April 1886 Dunedin "F" class d/s. Rear bears red 14 June 1886 London transit and Frankfurt on Main arrival cancels.	\$525
513	M	1906 7/6d bronze-grey, unsurfaced paper, p14, well centered, vert creases. CP Z9e. Cat \$2500. Mint.	\$750
514	M	1906 7/6d bronze-grey, unsurfaced paper, p14, well centered. CP Z9e. Cat \$2500. LH mint.	\$1,250
515	*	1913 3/- mauve, DLR chalky paper, p14½ x 154. CP Z4k. Cat \$850. MUH.	\$450
516	*	1913 4/- orange-red, DLR chalky paper, p14½ x 14. CP Z5k. Cat \$900. MUH.	\$500
517	*	1913 5/- green, DLR chalky paper, p14½ x 14. CP Z6h. Cat \$1250. MUH.	\$750
518	M	1913 8/- deep blue, DLR chalky paper, p14½ x 14, sideways wmk. CP Z10j. Cat \$900. Mint.	\$400
519	M	1913 9/- orange, DLR chalky paper, p14½ x 14, sideways wmk. CP Z11g. Cat \$1000. Mint.	\$450
520	M	1913 15/- green, DLR chalky paper, p14½ x 14, sideways wmk. CP Z14j. Cat \$2250. Mint.	\$850
521		1913 £1 horiz pair, p14, sideways invtd wmk, DLR with 20.5 x 3.0mm black CLEANED h/s - unique as pair & only 1 other example recorded + explanatory article.	\$1,000
522	*	1925 10/-, Cowan, chalky paper. CP Z12m. Cat \$3000. MUH.	\$1,500

### Arms

523	/	c1931-56 accum on Hagners, stockcards & packets. Mix of postal & fiscal use. Some attempts at organisation with some annotations. Noted: fiscals to £300 & some postal use to £1 incl 15/- x 10.	\$800
524	/	1931-56 seln on Hagners. Mint: 1/3d lemon, 1/3d yellow, 1/3d blue/yellow, 2/6d, 4/-, 5/- 6/-, 7/-, 8/-. MUH: 10/- horiz pair, 15/- & £1. FU: 7/-, 7/6d, 8/-, 15/- & 30/- (plus others minor faults).	\$450
525	/	1931-67 Specialised accum of 93 on 15 annotated pages. Noted: Cowan 7/6d (apparent postal) & 12/6d FU, WT single wmk 6/-, 7/-, 7/6d, 9/- & 15/- FU; WT mult wmk 7/6d, 9/-, 30/-, £2, £3, £5 FU (£5 apparent CTO) & £1 MUH, surcharges 3/6d sans serif (mult wmk MUH & FU, invtd wmk FU), 5/6d single wmk FU, 11/- mult wmk x 2 FU & 35/- FU. Also incl accum of 130 QVLT mostly fiscal (but incl simpl set of 11 to 10/- apparently postally used (6/- telegraph cancel, 7/- parcel cancel); 2/- & 5/- official GU & 2/6d brown counterpart (fiscal use)). Also £4/10/- Arms fiscally used. CP cat \$8800+.	\$1,500
526	M*	1931-56 set to £5, missing only 35/-, £3.10 & £4.10. Minor toning 2/6d, 4/-, £3 & £5. Mint, a few MUH incl 15/- & £1.	\$1,500

SEE THIS CATALOGUE ONLINE AT [WWW.MOWBRAYCOLLECTABLES.COM](http://WWW.MOWBRAYCOLLECTABLES.COM)

527	*	1931-56 1/3d to £1 all values except no 1/3d lemon, 2/6d, 7/6d or 10/-, incl 1/3d blue lettering. Jury cat \$1950+. MUH.	\$750
528	M	1931-56 1/3d to £3 simplified set (no 35/- or £2). Jury cat \$3850+. Mint.	\$1,500
529	*	1931-56 7/6d corner block of 4. Jury cat \$1000. MUH.	\$375
530	U	1931-56 12/6d, £3 & 5/- on c1950s commercial piece, fine Wellington C1 roller cancel. A rare piece.	\$750
531	*	1931 12/6d plum. Jury cat \$800. MUH.	\$400
532	*	1931 25/- pale blue, Cowan, light stain line on back, perhaps from s/b. CP Z43a. Cat \$1500. MUH.	\$500
533	M	1931 25/- pale blue Cowan. CP Z43a. Cat \$850. Mint.	\$400
534	*	1931 25/- pale blue, Cowan. CP Z43a. Cat \$1500. MUH.	\$800
535	M	1931 35/- orange-yellow, Cowan. SG F161, cat £6500. Ceremuga cert (2019). CP Z45a. Cat \$10,000. LH mint.	\$6,500
536	*	1931-56 £2.10 red. Jury cat \$1500. MUH.	\$575
537	M	1931 £3 green, Cowan, minor gum ageing. Sismondo cert (2009). SG F164. Cat £700. Mint.	\$425
538	*	1931-56 £4, £5 blocks of 4, both affected by gum discolouration. Jury cat \$5600. MUH.	\$950
539	*	1931-56 £4.10 deep grey. Jury cat \$6500. MUH.	\$4,000
540	*	1935 £3.10 rose, Cowan. CP Z49a. Cat \$8000. MUH.	\$4,000
541	*	1935 £4 light blue, Cowan. CP Z50a. Cat \$1200. MUH.	\$600
542	M	1935 £4.10 deep grey, Cowan. CP Z51a. Cat \$4000. LH mint.	\$1,500
543	M*	1939 3/6d to 35/- surcharges (3/6d sans serif). Cat \$2345. Mint (11/- MUH).	\$750
544	M	1939 3/6d to 35/- ovpt set of 6 incl 3/6d sans serif. Jury cat \$1250. Mint.	\$500
545	M	1939 3/6d to 22/- ovpts (4v). Jury cat \$905. Mint.	\$500
546	M*	1939 5/6d, 11/- ovpt blocks of 4. Jury cat \$2000. Mint/MUH.	\$650
547	*	1939 35/- on 35/- orange-yellow. Jury cat \$1600. MUH.	\$800
548	*	1940 22/- on 22/- scarlet, WT single wmk, with right selvedge incl red bar. CP Z56a. Cat \$1275. MUH.	\$650
549	*	1946-52 £2, £3, £4, £5 (WT mult wmk paper, £3 upright, other invt), £2 small gum blemish not mentioned, with accompanying Odenweller cert (2015). CP Z46d, Z48c, Z50b, Z52d. Cat \$2500. MUH.	\$1,000
550	*	1946 30/- brown, WT mult upright wmk paper. CP Z44c. Cat \$1000. MUH.	\$500
551	M	1946 £2 violet, WT, mult upright wmk. Also 1952 £2 wmk invtd. Sismondo cert (2008). SG 206, 206w. Cat £425. Mint.	\$300
552	M	1948 £3.10 rose, WT mult upright wmk. CP Z49b. Cat \$4000. Mint.	\$2,100
553	*	1951 £2.10 red lower RH corner single, WT, single wmk. CP Z47b. Cat \$1250. MUH (hinged on selvedge).	\$650
554	*	1951 £2.10 red, WT mult invt wmk. CP Z47b. Cat \$1250. MUH.	\$650
555	*	1952 £3 green, WT mult invt wmk. CP Z48d. Cat \$525. MUH.	\$300
556	U	1952 £3.10 rose, WT mult invt wmk. CP Z49c. Cat \$4500. FU.	\$2,000
557	*	1952 £4 blue, WT, mult invt wmk. CP Z50b. Cat \$600. MUH.	\$300
558	*	1984 \$4, \$6, \$10 blocks of 4 with top selvedges, p14 (comb), sideways invt wmk. All unsurfaced paper. CP Z58bz, Z60bz, Z61bz. Cat \$800. MUH.	\$300

## NEW ZEALAND - BOOKLETS

559	M*	1907-1970 colln of booklet panes & pairs incl 1908 1d Universal official perf all round (CP WO2az). Pre 1935 CP cat \$1735. 87 panes from 1935 on. Mint/MUH.	\$575
560	*	1971 abnormal 75c Pictorials incl 3c pane, wmk sideways (normal is sideways inverted). CP W10axa. Cat \$600+. MUH.	\$230

## NEW ZEALAND - OTHER

- 561 \* 2004-8 CALs (Customised Advertising labels) extensive colln of 345 early issues MUH in mounts on pages & 28 diff CTO FDCs. Noted 2004 45c BMW (cat \$350), 2004 ANZ Bank set of 2 diff booklets (cat \$280), then apparently all issues from 2005 Kiwipex to 2007 Cafe, incl many blocks of 4 as setenant blocks & 12 FDCs 2005-7. These all listed by Jury (total cv approx \$1500). Also many 2007-8 issues (240 stamps & 16 FDCs). \$750
- 562 U 1925 Railway Charges colln/accum in 2 s/bs on Hagners & in packets. Some attempt at organisation but few keys/unusual stations etc noted except 3d "Auckland" double ovpt & 2d MUH. About 400 stamps. Also about 300 Railway Newspapers. Also several hundred low value Arms etc. \$1,500
- 563 U 1925 1d (no dot) NZ Railways Charges horiz strip of 3, p14½ x 14, "CENTRAL B.O./WELINGTON" station ovpt errors: 1st stamp - CBO/W reads up & CBO (doubled) up & w (doubled) reads down; 2nd stamp - CBO/W doubled & both parts read up; 3rd stamp - CBO/W double & both parts read up. Used, creasing. A spectacular error. \$1,250
- 564 1920 2/6d NZ Postal Note red (NZ bush scenery at sides), Harwood type 5B. Numbered "371703". Light TARIKI M.O & S.B. octagonal d/s (violet) 9 FEB 1925. Vert central fold. Otherwise, very fine appearance. Uncashed. Cat US\$400. Rare. \$250
- 565 / Maori theme interesting range of items incl: 1970 20c Moko (facial tattoo) preliminary pencil drawing on tracing paper (17 x 14cm), mounted on album page; ditto MUH stamp with black massively displaced 7mm to left, over "20c" & "New Zealand"; 1920 1½d Maori imperf plate proofs 1 horiz & 1 vert pair on wmkd paper as issued, gummed (MUH); 1935 3d Wahine progressive die proof (black panels); 1924 PPC ex Ratana Pah, with long message in Maori 2/6/24, signed "J. Nepia" & 2 h/s; 1899 telegram written in Maori, from Rata to Mangaweka; & several modern items with moko designs. Also Tonga 1993 Children's Art, enlarged proof of 80c "Maori" design & 4 diff imperf/perf stamp-size proofs/"Specimen" ovpts. \$1,500

## NEW ZEALAND - REVENUES

### *QV Long Types*

- 566 R 1867 1/- grey & red horiz pair, die I, value at base in 1 line, NZ wmk invt & reversed, H-roulette on all sides. M/s "X"cancel on each. Horiz crease through both. Rare experimental separation. Attractive multiple. Kiwi R259j. Cat \$1300+. \$1,000
- 567 U c1882-1926 accum in 2 s/bs, several pages, stockcards etc, wide range of values to £400 - incl a few low vals postally used - about 1000 stamps. Some attempts at organisation. Also over 400 1867 types but most 1ds etc. \$750

### *Arms*

- 568 R 1931-56 seln of 95 on 3 Hagners virtually all values to £300 covers + £1000 (punched). Noted also unovpt £400 unpunched (blunt corner); £4.10 punched. Ovpts 22/-, 35/- & £100 unpunched; 35/-, £200 x 2 & £300 punched (also 4 QVLTs). \$300

### *Other*

- 569 R 1880 6d QV Beer Duty (2 gallons) pale blue & vermilion, 2nd series, sideways NZ wmk, "SIXPENCE" in 1 word. Used (light m/s cancel). Light overall soiling & 5mm edge tear at top but good average condition. This series used for only 3 years. Rare. Kiwi R16a. Cat \$2000. \$1,250

## NEW ZEALAND - CINDERELLAS

- 570 1930s 2/6d Wellington Cathedral Fundraising labels block of 12 (4x3) rouletted, on special "A Penny A Day Appeal" certificate. Signed & dated 20 OCT 1945. Attractive scarce item. Heslop G32. \$850

## NEW ZEALAND - POSTAGE DUES

- 571 / 1899-1949 specialised accum of 72 mint & used on 7 annotated pages. Noted 1899 5d GU/FU, 1902 (½d Jones p14 x 15 GU/FU, ½d Cowan p14 GU/FU, 3d Cowan p14 FU x 2, 3d Cowan p14 x 15 FU x 2); 1949 1d horiz pair p15 x 14 mult wmk FU. Also incl Express Delivery Fernleaves (p11 m x 2, u x 2, p14 x 14½ Cowan MUH, m & u x 2, p14 x 15 Cowan m&u, p14 x 14½ WT MUH, m&u x 2, p14 x 14½ Cowan with invtd wmk GU) & Ross Dep 1957, 1967 & 1972 sets m & FU. CP cat \$4950. \$750
- 572 M\* 1899 ½d upper half sheet (120v in 2 panes of 60 each) Type II frame (small N.Z.). Also incl is the corresponding lower half sheet (120v in 2 panes of 60), with numerous varieties indicated. The lower 2 rows of this sheet show a delightful green offset, which is not listed by CP. The Type II frame plate was used to print the following 1899 P Dues: ½d, 1d, 2d, 3d & 4d. Cat \$6000+. Mint/MUH. \$2,000



573	M*	1899 1d upper half sheet (120v in 2 panes of 60 each) Type II frame (small D), with numerous varieties indicated. Cat \$6000+. Mint/MUH.	\$1,100
574	M*	1899 2d lower half sheet (120v in 2 panes of 60 each) Type II frame (small D) with 3 diff "shaved tops of 2" varieties indicated. Cat \$16,000+. Mint/MUH.	\$4,500
575	M*	1899 3d complete LH pane of 60 (10 rows of 6) with R3/6, 4/1 & 5/1 centre plate flaws. Cat \$4800. Mint/MUH.	\$1,350
576	C	1899 4d horiz pair on overweight, underpaid commercial cover ex 2 MAY 1907 Fremantle, Western Australia, to Dunedin, NZ, with pair 2d yellow Swans, black oval T (taxe) mark & 8d inserted in pencil & Dunedin 16 May cancels. Believed less than 10 covers are recorded with pairs of 4d P Dues attached. Attractive cover.	\$500
577	C	1899 4d pair + 2d on overweight, unpaid commercial cover ex 5 DEC 1900 Curacao, Netherlands West Indies to Dunedin, NZ, bearing black T (Taxe) mark boxed by blue crayon, TO PAY / DOUBLE DEFICIENCY h/s & 10d inserted in m/s, 26 JAN 1901 Dunedin "F" class cancels P Dues. On rear are transit cancels of New York & San Francisco. Vendor states: the cover is the highest known taxed letter to NZ prior to WWI & 1 of a few taxed at 10d rate.	\$850
578	M	1899 4d (with gutter between), 8d, 10d, 1/- blocks of 4. Jury cat \$3300. Mint.	\$950
579	M*	1899 4d complete LH pane of 60 (10 rows of 6), 1 stamp & bottom & top selvedge hinged. Cat \$8910. Mint/MUH.	\$2,250
580	M	1899 4d, 8d, 10d, 1/- & 2/-. 8d has little gum but slight kissprint doubling on front. 1 perf short on 2/-. Jury cat \$1300. Mint.	\$230
81	M*	1899 5d block of 36 from upper left pane (R1/1-R6/6) with R3/1, 4/1, 2/6, 3/6, 4/6, 5/6, 6/2, 6/3, 6/4 & 6/5 varieties. CP cat \$5040. Mint/MUH.	\$1,850
582	M*	1899 8d block of 4, lower pair unhinged. Cat \$1200. Mint/MUH.	\$300
583	*	1899 10d horiz interpanneau block of 12 (R1/6-R2/11), with top selvedge hinged, one of the largest multiples recorded. Jury cat \$5400 as singles. MUH.	\$1,850
584	M	1899 1/- error - single with horiz double perfs partially at top & complete in lower selvedge. RPSNZ cert (2008). CP Y13a(Z). Cat \$1000. Mint.	\$400
585	U	1899-1900 set of 14 to 2/- (incl ½d, 1d & 2d vars). CP Y1a-14a. Cat \$2000. FU.	\$850
586	M	1899-1900 set of 14 to 2/- (incl ½d, 1d & 2d vars). CP Y1a-14a. Cat \$1970. Mint.	\$750
587	*	1899 short set to 1/-. Jury cat \$2065. MUH.	\$1,000
588	M*	1902 ½d upper half sheet (120v in 2 panes of 60 each), Cowan, p11, no wmk, with various flaws identified. Cat \$1800. Mint/MUH.	\$500
589	M*	1904 ½d vert block of 10 with lower selvedge, Cowan, p11, double perfs vert in left column of stamps. RPSNZ cert (2008). CP Y15b/z. Cat \$1075. Mint/MUH.	\$400
590	*	1905 2d, p11. CP Y17a. Cat \$500. MUH.	\$250
591	U	1905 2d p11, Cowan unsurfaced paper. One of the scarcest Postage Dues rarely seen, vastly under catalogued. SG D20. Cat £130. FU.	\$500
592	U	1906 1d Cowan, mixed p11 & 14, part WAKI "A" cds. CP Y16b(Z) but unpriced. Believed this stamp was the original stamp featured in the CP catalogue that enabled this listing. FU.	\$1,250
593	C	1938 ½d-3d Postage Due set of 4 on pictorial printed FDC (outline of NZ, Kiwi, green & red), canc Whakatane cds 16 AU 38. Correctly treated, with "COLLECT ..." circular h/s & "6d" m/s added. To local addressee (care of PO). Also plain FDC of 1939 6d Express Delivery (motor car) with 6d Kiwi, typed address & endorsement, canc Highfield cds 16 AU 39, to Gore. Both fine & scarce. Jury cat \$1100.	\$650
594	M*	1939 3d horiz block of 28, single sideways wmk single patched at R1/6, the remaining stamps have single sideways invtd wmk. Patching was an economy method employed by the Government printer to avoid waste. When a stamp(s) was damaged, it/they were replaced.	\$500
595	U	1945 3d complete sheet (120v), p15 x 14, mult sideways invtd wmk, canc by somewhat indistinct purple oval r/s thought to be AUCKLAND / 17 MAR 1948 / REVENUE CHECK - a remarkable intact item of internal accounting. Cat \$2400.	\$500

## POLAR

596	C	King Edward VII Land 1908 ovpt on 1d Universal, FDC, fine "BRIT. ANTARCTIC EXPD." cds 2.30PM JA 15 08. "British Antarctic Expedition 1907" printed on flap. To NZ. Fine apart from central horiz fold on cover & 3 small edge tone spots. CP cat \$1100.	\$750
-----	---	--	-------

597	U	King Edward VII Land block of 4 with part of alignment arrow & concentric circle in bottom selvedge. British Antarctic Expdn cds. CP RD1a var. FU.	\$750
598	U	King Edward VII Land 1908 1d block of 4 with 2 dots & half of alignment arrow in bottom selvedge (plate 4). British Antarctic Expdn cds. CP RD1a(4). Cat \$4500. FU. (Note: no complete plate blocks obtainable as sheets split before overprinting).	\$2,000
599	*	King Edward VII Land 1908 1d. Jury cat \$1600. MUH.	\$800
600		Little America letter 1935 - 23 Jan from Captain Innes Taylor to "Ken". "It was thoughtful of you to write me - many thanks. We are working night & day getting ready to load the ships. In a few weeks we'll be in N.Z. maybe in Christchurch, when I shall hope to have the pleasure of seeing you. Good Luck." Letter from one of the Byrd II Antarctic Expdn members on possibly "Jacob Ruppert" or "Bear of Oakland". These ships arrived in Antarctica in Jan 1935 to load Expdn equipment etc & left on 7 Feb 1935 for Dunedin, NZ. Fine condition - pencil written letter.	\$1,000
601	C	Polar 1924 Eneret Mittet & Co, Kristiana, Norge PPC unstamped featuring polar bear & cub in colour on view side, to Wellington NZ. Address side bears facsimile signature of Roald Amundsen, illustration of Nansen's FRAM, printed quadri-lingual message re crossing the (North) Polar Sea & onward delivery, pictorial POLHAVET ship's cancel x 2 (4 VIII 24 & 13 IX 24), T tax mark in black, 2½c(?) in blue pencil, TO PAY / 3d / DEFICIENT POSTAGE h/s in black with 1919 NZ 1d DLR horiz strip of 3 Postage Dues tied by Wellington dumb "A" class cancels.	\$500
602	U	Victoria Land 1913 ½d, canc complete "BRIT. ANTARCTIC EXPD." cds 1.30PM JA 18 13 (1st day) on neat piece. From one of the certificates sold later in 1913. Superb. Jury cat \$2250. VFU.	\$1,000
603	U	Victoria Land 1913 ovpt on ½d green EVII CTO by "BRIT. ANTARCTIC EXPD." cds 1.30PM JA 18 13 (1st day of use) on printed "British Antarctic Expedition / Terra Nova R.Y.S." certificate (3 folds). Upper right corner perf of stamp appears to have been folded at some stage but is intact. Stamp alone cat \$2250 as FU single (FDC cat \$3400).	\$1,750
604	M	Victoria Land 1913 ½d, well centered. American Phil Soc cert (2011). CP RD2a. Cat \$1750. LH mint.	\$1,000
605	*	Victoria Land 1913 ½d, o/c to top left. CP RD2a. Cat \$2750. MUH.	\$1,000

## FLIGHT COVERS

606	C	Australia 1931-40 x 32 items incl: 1931 Australia to Java (2); Australia to England (2); Australia to NZ (1); 1934 Air Race signed: Kay (2), Davies (1), Turner (3).	\$575
607	C*	Germany 1912-13 Pioneer flight stamps & cover: 1912 Regensburg Fliegertage 10p MH with AIEP cert. Also 1912 Margareten Flugpostmarke stamp pair mint, 1912 Darmstadt flugpostkarte & 1913 Deutsche-Englische Luftschiff (airship) Expedition New Guinea stamp mint. Michel 4a, 4b, 7 etc. Cat €2750+.	\$900
608	C	NZ 1931 17 Feb Napier to Wellington, endorsed "From earthquake area", bearing T1 in pencil & 1d P Due stamp tied by Wellington dumb "A" class cds addressed to Miss Eddy, Wellington. NZ Airmail Catalogue states: "Most known covers were produced by RJG Collins of Verne, Collins & Co Christchurch. A few others exist."	\$400
609	C	NZ 1937 2 March: Wellington-H.M.S. Achilles flight cover bearing 1d Airmail cancelled Wellington 2 March 1937 "C" class cds, addressed to Petty Officer F. Fricker, H.M.S. "Achilles", Picton. In addition, bears part oval H.M.S. ACHILLES 2 March 1937 r/s in blue, countersigned by Lieut TP Coode. NZAMC 156, believed the only 1 known.	\$675
610	C	USA 1923-40 c150 FFCs etc incl better. Noted Lindbergh flights 1923 San Juan-Paramito; 1928 St Louis x 2; 1930 Miami to Brazil; FFCs: 1929 Miami-Cuba etc. Some signed items incl Douglas wrong way & Corrigan. Also 1978 'Aviation Pioneers' PO book.	\$750
611	C	World 1940s-90s carton of 2 bundles, pages & 7 packets of FFCs, special flights, memorabilia incl cover signed by Alvin White & Joe Cotton (US test pilots). Probably c1000 items. Weighs 7.5kg	\$575
612	C	Zeppelin 1936 US-Cuba reg'd cover franked 2 x 20c + 15c Airmail stamps addressed to Habana. H/s Hindenberg First Flight & via Airship Hindenburg from Lakehurst to Frankfurt. B/s NY 9 & 10 May, Frankfurt 14 May, Habana 27 May. Some toning spots. Frost cat US\$1650.	\$575

## AUSTRALIA

613	P	South Australia c1883 ½d green (small design) colour trial block of 4 imperf vertically in between with top selvedge. Listed by Robson Lowe & noted as rare. MUH.	\$250
614	M	Tasmania c1860-65 x 3 shades unused, 2 with part toned gum. All 4 margins, between SG 44-46. Cat £2550 mint. Ex Lovis.	\$450

615	C	Victoria 1868 cover (a little cut down at left) to Montreal, Canada, franked QV Laureates 10d dull purple & 1d green, canc by fair "625" barred numeral obliterator (rated 'RR'). Alongside is very good strike of unframed cds BREAK O'DAY / VICTORIA NO 10 68 (rated 'RRRR'). Only 3 examples of this cds recorded. PO opened 25 Jan 1868, renamed Corindhap 21 Sept 1876. Very rare.	\$350
616	C	c1879-1980s Cinderellas accum on 4 Hagner equivalent pages. Incl Torres Strait Settlement set of 6 mint (2c corner missing, 36c straight edge on top), Coolgardie Cycle Express set MUH, Coolgardie Camel Post set MUH with usual patchy gum, "Herald" air label Type 2, Redex 1954 signed competitor card, Pichi Richi Railway set of 4 m/ss.	\$1,500
617	C	1901-72 Postal history accum of 16 covers & p/cs. Noted 1935 Fraser Island SS Maheno wreck rocket mail cover, 1937 signed rocket mail FDC, 1935 inaugural Darwin-Adelaide flight cover, 1935 Port Lincoln-Adelaide regal flight cover, 1912 Australia lettercard from Outer Harbour (South Australia) to Germany, 2 paquebot covers & 2 paquebot p/cs.	\$400
618	U	1922 4d GV blue, single wmk. White flaw on king's temple (plate 1L40). BW states about 5 mint, 50 used examples known. BW 112(1)(g). Cat A\$1500. FU.	\$300
619	M*	1926 9d Roo, 3rd wmk, plate 4, substituted cliché Die II in horiz pair with Die IIB. L9 position (per BW catalogue illustrations) mint Die IIB hinged. Die II stamp MUH. BW 27(4)ga. Cat A\$2500.	\$575
620	U	1930 Lord Howe Island "2d paid P M L H I" manuscript/surcharge/ovpt on 1½d Sturt. SG priced £750. GU/FU.	\$750
621	U	1932 5/- Bridge, retouch over left centre of Bridge. BW 148e. Cat A\$750. FU.	\$300
622	*	1943 9d Platypus p14 x 14¾. NW imprint block of 4 with left 2 stamps showing double perfs at left. Mounted on selvage, display item. BW 206bd/zd. Cat A\$850 (for 206bd only). MUH.	\$230
623	C	1946-7 ½d-5/- "B.C.O.F. JAPAN 1946" ovpts set of 7, on regd O.A.S. cover addressed to NZ soldier in NZ (but no receipt b/s), Unusually canc "R.N.Z.A.F. 333 N.Z.A.P.O." cds 11 FEB 48 (2 strikes). NZ regn label with "NZAPO 333" h/s. At this time, NZ APO 333 was at Bofu airfield, having moved from Iwakuni 2 days previously (both locations near Hiroshima). RAAF APO 30 was also at Iwakuni. So this cover may have been cancelled by favour & handed back over the counter. Exceptional (philatelic) use of NZ Forces cancel on Australian stamps. Fine. SG J1-7. Cat £275 (for the stamps alone). FU.	\$350
624	*	1950 £2 Coat of Arms green, lower LH corner block of 4 with "By Authority" imprint incl R4, 5/1 stamps retouched. BW 271zc. Cat A\$1750. MUH.	\$1,000
625	*	1960 5d Girl Guide lower right corner block of 4 showing clear offset. With normal for comparison. BW 377c. Cat A\$800. MUH.	\$150

## PACIFIC ISLANDS

626	C	Cook Isl 1892 1d provisional design (double size, folded) postal stationery p/c grey-blue shade, cancelled by 19 April 1892 boxed pmk - first day of issue. Addressed to "Captain Thomas Hobart Tasmania". Message dated 18 April and signed "Robert". Note: RPSNZ vol 9 p398 states only unaddressed FDI postcards are known.	\$750
627	C*	Cook Isl 1893 Queen Makea set of 5 imperf die proofs on unwmkd wove paper, ungummed (with approx 4mm margins): 1d pale brown, 1½d mauve, 2½d carmine-lake, 5d plum, 10d ultramarine. Also imperf black plate proofs of central vignettes of 1920 1½d Cook (block of 4) & 1927 2½d Chief (plus the 2 issued stamps MUH). Also 1892 1d "Stars" p/c (blue) PU canc Rarotonga A-class cds 12 FE 94 to GB (message in Maori) & 1894 1d Makea p/c, blue on buff unused (both fine) (11 items).	\$1,000
628	C	Cook Isl 1896-7 2 reg'd covers addressed to WJ Hawley, Wellington. 1) 1d blue, 1½d, 2½d, 5d & 10d Queen Makea's, all p12 x 11½, tied by Rarotonga 5 AP 96 double ring cdss. 2) 1d blue, 1½d & 5d p12 x 11½; 2½d & 10d p11 tied by 28 MY 97 Rarotonga double ring cdss.	\$575
629	P	Cook Isl 1932 ½d to 1/- Pictorial set of 7 as imperf plate proof blocks of 4 in issued colours. Also similar centre plate (for 4d) block of 4 in black.	\$500
630	C	Cook Isl 1936 2/- Admiral on small, neat typed reg'd FDC, very fine 15 JL 36 cds + R label, to J.D. Jackson, c/- Treasury Dept, Rarotonga. This is the 1st example we have seen. SG 116.	\$1,000
631	C	German New Guinea 1911 reg'd cover to Germany, franked FU German NG 1M carmine & 2M blue Yacht SG 16, 17 (both with selvage), canc Rabaul cds (4 strikes) 4.9.11. Vert fold (not through stamps).	\$750
632	C	Pacific Isl c1880s-1910 postal stationery range of 8 diff items incl: Tonga x 3 diff 1906. 1911 series Pictorial 1d p/cs (1 PU to Europe 1924), Fiji 1895 1d + 1d violet Canoe reply-card, French Oceania 1913 20c Wahine p/c, Hawaii 1883 1c + 1c Queen R/C, 1893 1c Queen p/c, 1894 2c Map p/c. All fine unused unless stated. Also NZ range 1897-1903, all Pictorial, incl 4 diff 1d p/cs & 1903 EVII 1d L/C. Attractive lot incl scarce types. (13 items).	\$500

633	*	Pitcairn Isl 1940 4/8d Booklet, black on deep green cover, 17mm staple. Contains 8 GVI stamps (½d-2/6d). Free of toning. SG SB1. Cat £3250. MUH.	\$2,500
634	C	Samoa 1895 (2½d) 1/- Palm Trees p11 bisected on cover tied Apia 22 May 95 cds in blue addressed to Mr AP Dryden c/- WA Cooper Esq, Foreign Mail Clerk, Post Office, San Francisco, inscribed "Via London" with hexagonal boxed "T" London Taxe mark & b/s San Francisco Jul 4 1895. Odenweller states 11 such covers known for this date (pgs 251-4) of which 8 are with this perf 11 stamp. According to Odenweller (p252) "All of the Dryden covers received London transit marks of June 22" but (exceptionally this cover does not bear a London datestamp. Also incl article by D Smitham (2022).	\$1,500
635		Samoa 1980 defaced plate reprint sheets of 120v for museum presentation of 2½d King Malietoa x 2; 5d Flag x 3. Also Palm Trees ½d x 12, 1d x 10 (+7 smaller units of 8 to 30); 2d x 9; 4d x 6; 6d x 18; 1/- x 8 & 2/6d x 14. Most are imperf & printed in a range of colours. Each shows various means of defacement, sometimes multiple devices used on plates. Housed in large album with photocopies of c1900 correspondence re these stamps (82 defaced reprint sheets of 120v). Also, similar sheet Cook Isl 1d Queen Makea.	\$6,000

## GREAT BRITAIN

636	M	1840 1d Black plate 1a (BK) 4 margins. Light overall toning. Brandon cert (1983). Rare. SG 2. Cat £18,500. OG. Mint.	\$12,000
637	U	1840 1d Black plate 1a (BK), 3 margins, on piece from cover. Red MC with 12 MY 1840 b/s. SG cat £425+.	\$500
638	C	1840 1d Black plate 2 (BE), 2 close margins, on cover with seal addressed to Bury St, St James's. Red MC with FD MY 14 1840 b/s. SG Spec cat £3250.	\$1,250
639	U	1840 1d Black plate 3 (RA), 4 margins, black MC cancel & 2d blue (FD), plate 1, 4 margins, red MC cancel, each in SG certified numbered books. SG cat £1750.	\$750
640	C	1840 1d Black plate 6 (PB), 4 margins, on wrapper, addressed Limerick. Black MC, b/s Cork MR 3 1841 & Limerick MR 4; also scarce "Cork Too Late" 2 line h/s. SG 2. Cat £750.	\$500
641	C	1840 1d Black, plate 6 (TF) cut close, with unclear black MC cancel (fair "Houghton le Spring Penny Post" h/s alongside), on 1841 entire. SG 2, cat £750 (if fine) on entire. Also: 1842-3 imperf 1d red-brown entires x 4 with diff MC cancels; 3 (soiled) covers to NZ 1864-81 with QV 6d SG 84 (FU), 97 (FU), 161 (these cat £700+ on cover); 1856 1/- green SG 73 horiz pair GU/FU (cat £700) on cover front to Australia; 1854 part wrapper Australia to NZ with NSW QV 6d imperf SG 91 GU (4 margins) & fine Auckland NZ unframed receipt cds DE 11.	\$750
642	C	1840 1d greyish-black plate 11 (ED), 4 good margins used on lettersheet tied by black MC cancel, sent from Liverpool MR 12 41, addressed to Feckenham Worcestershire. RPSL cert (1983). Rare. SG Spec AS72. Cat £16,000.	\$12,000
643	U	1840 2d Blue x 3 plate 2, used together on small piece & cancelled black MC. Stuck overlapping each other but appear to be EA (4 margins), -K (3 margins); FA (double letter, 2 margins). MC elongated central star, typical of Irish cancels. SG 5. Cat £3000. GU/FU.	\$950
644	U	1847 embossed set of 3. All cut square full margins or very close. 1/- small cut one corner. SG 54-60 range. Cat £3500. FU.	\$1,150
645	U	1864-79 Recess 4 corner letters plate No colln on attractively typed up pages: ½d pl 5, 6, 11-15, 19, 20 (ie: missing 1, 3, 4, 8-10); 1d 71-224 (complete except pl 77 & 225); 1½d pl 1 & 3; 2d pl 7-9, 12-15 (ie: complete). High CV. GU/FU.	\$575
646	U	1884 10/- ultramarine, blued paper, fine nearly complete Manchester York St JY 13 85 cds. RPSL cert (2022) which states "soiled and parts of design faded". SG (spec) K13(1). SG 177. Cat £8250. VFU.	\$3,750
647	U	1884 £1 brown-lilac, 3 crowns wmk, light creasing. SG 185. Cat £3000. GU/FU.	\$750
648	M*	1902-1910 EVII seln of 126 used on pages categorised by Michel specialised cat nos. Noted 3d ("LFB" perfin) & 10d blocks of 4, 5/- x 2 & 10/-. Also incl 6d 3 x 2 block with lower selvedge interpane gutter.	\$750
649	M	1902 1/- EVII "Govt Parcels", good colour. SG O78. Cat £1350. Mint.	\$575
650	U	1902 £1 EVII, 3 oval 31 JA 05 cancels. SG 266. Cat £825. GU/FU.	\$375
651	U	1929 £1 PUC. SG cat £550. GU/FU.	\$500
652	M	1934 2/6d, 5/-, 10/- Seahorses re-engraved. SG 450-2. Cat £575. LH mint.	\$375

653 \* 1972 £1 Machin imperf block of 4. SG 831b var. MUH. \$190

## BRITISH COMMONWEALTH

654	M	Cape of Good Hope 1863 1/- pale emerald-green block of 4, DLR printing, wmk anchor. Brandon cert (1993). Attractive & very rare. SG 21a. Cat £5600+. OG. Mint.	\$7,500
655	U	Ceylon 1859 4d dull rose, star wmk, imperf, 3 margins (just cut into at base). Light obliterator & m/s cancels. 1967 (BPA) & 2011 (Schellar) certs. SG 4. Cat £4500. FU. Ex Lovis.	\$725
656	M	Ceylon 1861-64 8d yellow-brown, star wmk, rough p14 to 15½. Ex AC Edwards colln (2016). SG 32a. Cat £1600. Unused. Ex Lovis.	\$300
657	M	Ceylon 1861-64 2/- star wmk, p14 to 15½, the 2 shades listed by SG: dull blue (mint) & deep dull blue (unused). SG 37, 37a. Cat £1850. Ex Lovis.	\$375
658	U	Mafeking 1900 Siege stamps - 3d on 1d (Cape of Good Hope stamp); 1d Baden-Powell pale blue & 3d Goodyear 18½mm wide. Each with nice Mafeking cds cancel (3d (several light toned perfs). SG 3, 18, 20. Cat £900. Used.	\$500
659	M*	Newfoundland 1919-31 Airs seln: 1919 \$1 on 15c with & without comma after "POST"; 1931 wmk set of 3. SG cat £400. MUH (SG 143, 195, 197). Mint (SG 143a, 196).	\$250
660	*	South Africa 1913 GV definitives short set of 14 to 10/- (plus ½d inverted wmk). Cat £372+.	\$275
661	C	South West Africa 1923 extraordinary late usage of German official stationery, self explained. KAISERLICHE TABELLE canc ONDONGA (on N Frontier) 24.10.23, received Windhoek 2 NOV 23, note scribbled inside requests replacement tabelles as have run out. German Forces in SW Africa surrendered July 1915. S African stamps used until Jan 1923 when SW African stamps issued. This usage of German official over 8 years late!	\$350

## FOREIGN

662	C	Austria 1948 local stamps, 3 covers each franked with plain stamps, perf inscribed "POSTGEBUHR BAR BEZAHLT TAXE PERCUE BARNASCHWEISUNG". Franking 5 x 5gr, 10gr & 40gr. All canc GRAZ - ST PETER 11-1-48 & 2 h/s DRUCKSACHE. Unlisted Netto & Michel.	\$210
663	M	China 1897 4c on 3c deep red, revenue stamp surcharged for postal use, surcharge SG type 19. Centered low, regummed. RPSL cert (2019). SG 90. Cat £1400. Mint.	\$1,000
664	*	Indonesia 1948 2½g, 10g, 25g Indonesia ovpts on Netherland Indies stamps. SG 538-40. Cat £465. MUH.	\$170
665	C	Madagascar 1904 cover with 30c Cinnamon on drab Diego-Suarez bisect tied by Vohemar 28 Feb cds & "Affranchiainsi/Faute Figurine" h/s addressed to Tamatave. Tamatave 9 Mar arrival b/s. Cover cut at left. SG 52w. Cat £900 (on cover).	\$750
666	/	Netherlands Indies-Japanese Occupation 1942-43 4 scarce items: 1942 5g (1941 design) with Japanese naval ovpt, mint no gum, unpriced by SG; blocks of 4 x 5c & 12½c Netherlands with naval ovpt, mint, unpriced by SG; F8.50 on 3c Netherland Indies, used on piece with SG 120; F8.50 ovpt on 3c, not listed by SG who state this value was used on telegraph money orders (see below SG 15). However, this piece appears to have normal Japanese Occupation cancel. SG 122, 129, 130 151 var.	\$350
667	C	Sweden 1822 royal "feather letter", folded printed proclamation (dated 7 Oct 1822) from the office-bearers of the Royal Chamber of Commerce, Stockholm regarding customs duties on Livestock imports. With (indecipherable to us) manuscript address dated 17 Nov 1822. Also with decorative red wax seal into which is impressed a single small brown feather (elaborately prepared & still in excellent condition). This was to indicate transmission required by royal express mail (the lowest of 3 levels; 3 feathers was the highest). These feathers were in use in the Swedish royal mail system from the mid 18th to mid 19th century (when postage stamps were introduced). This example is in very fine condition for its age. With information background article regarding feather letters of Sweden & Finland. Something really different!	\$500
668	U	Switzerland 1854 5r Helvetia, first Munich printing, scarce orange-brown shade, 2 clear margins. GU/FU. Zumstein Z22a. Rellstab cert (1980) which implies silk thread has been removed. SG 25a. Cat £2000.	\$375

# Upcoming Auction Dates

- Friday 23rd September - International Numismatic Auction
  - Saturday 24th September - International Stamp Auction
- Friday 24th March 2023 - International Numismatic Auction
  - Saturday 25th March 2023 - International Stamp Auction
- Friday 22nd September 2023 - International Numismatic Auction
- Saturday 23rd September 2023 - International Stamp Auction

*Auctions will be held at the West Plaza Hotel, Wellington*

Catalogues will be online at [www.mowbraycollectables.com](http://www.mowbraycollectables.com)

## Thinking of Selling?

We sell more stamps worldwide than any other company in New Zealand, and are now accepting material for our upcoming public auctions.

If you wish to take advantage of new Zealand's number one selling opportunity, contact us now.

Suitable consignments permitting, we may add additional sales.

**\*\*CONTACT US NOW\*\***



### **MOWBRAY COLLECTABLES**

Private Bag 63000, Wellington 6140, New Zealand

Phone +64 6 364 8270, fax +64 6 364 8250

Email [auctions@mowbrays.nz](mailto:auctions@mowbrays.nz)

Website [www.mowbraycollectables.com](http://www.mowbraycollectables.com)



537



638



636



ex 639



644



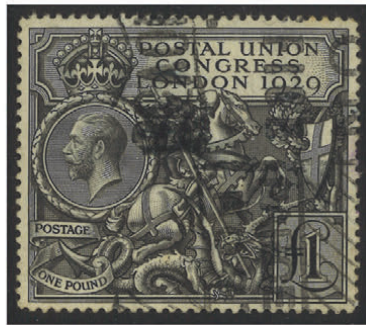
646



647



649



651



ex 858



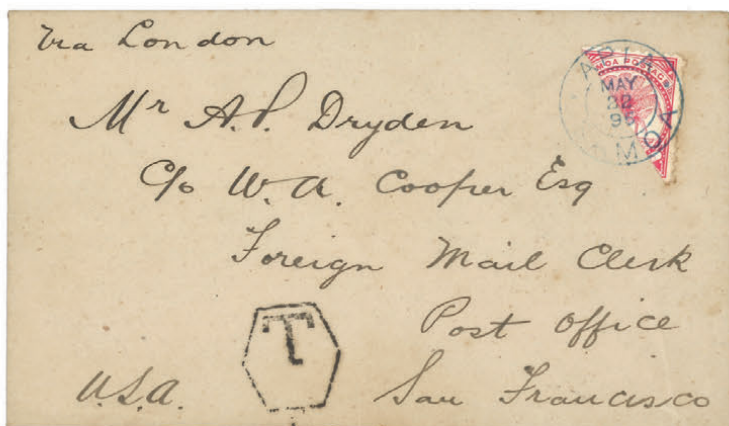
655



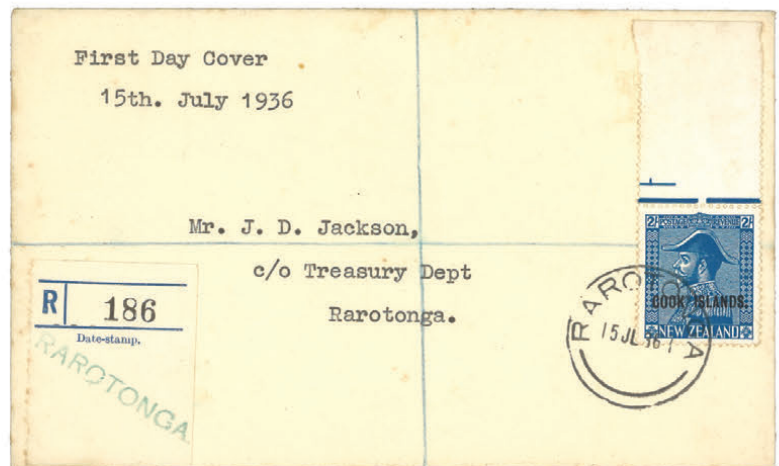
654



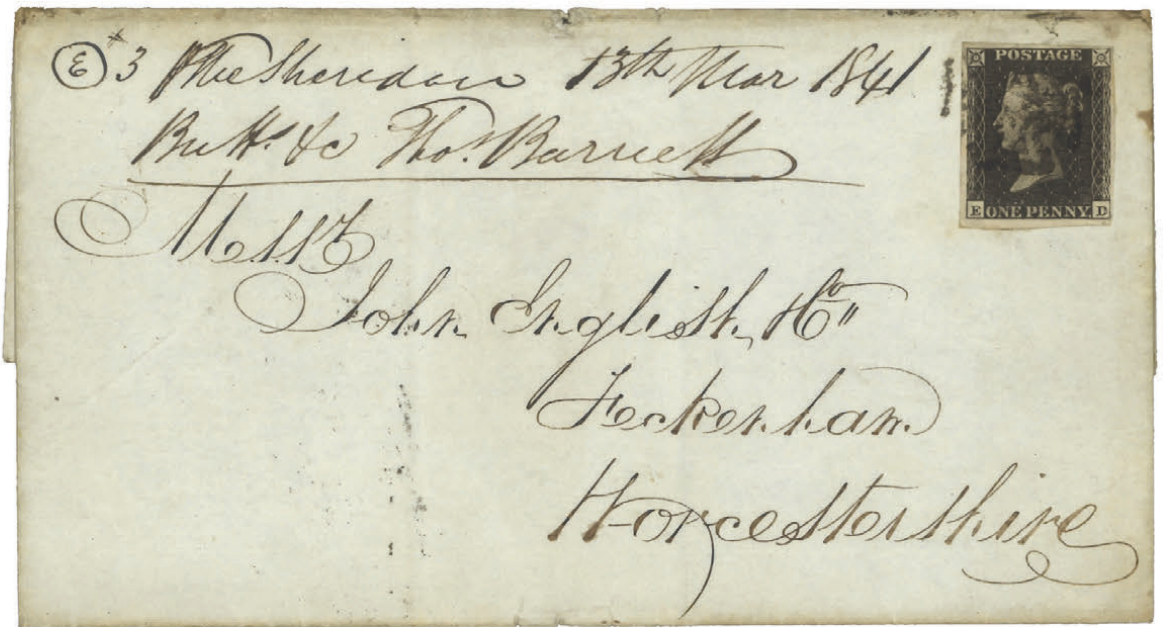
ex 659



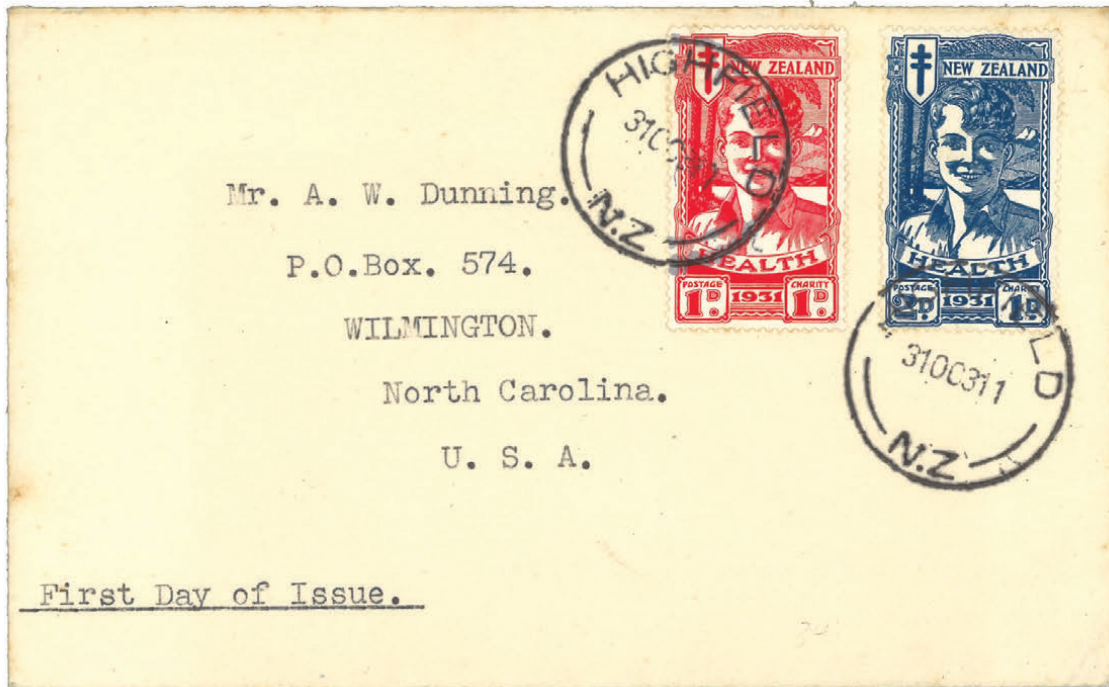
634 - image reduced



630 - image reduced



642 ▶



◀ ex 420



ex 22 ▶