

PUBLIC STAMP AUCTION



SATURDAY 16TH MARCH 2019 - 1.00 PM
AT THE WEST PLAZA HOTEL, WELLINGTON, NZ

MOWBRAY COLLECTABLES



Lot 227



Lot 229



Lot 228



Ex 9



Ex 28



Ex 35



Ex 44



Ex 49



Ex 66



Ex 90



Ex 104



Ex 62



Ex 312



346



Ex 315



350



351



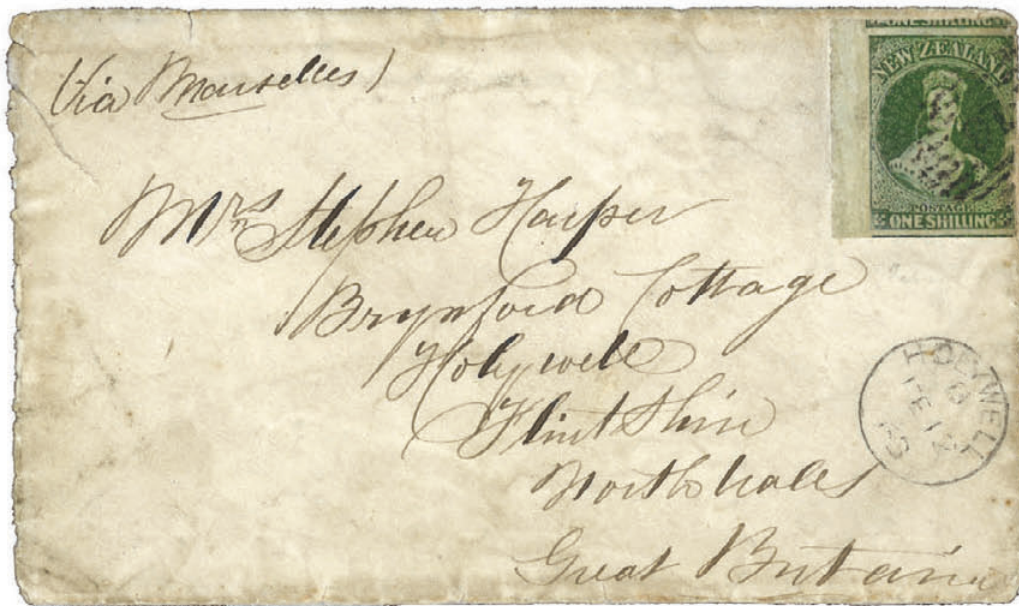
356



188



193



190



192



194



202



MAJOR INTERNATIONAL PUBLIC STAMP AUCTION

Saturday 16th March 2019

commencing 1pm

West Plaza Hotel, Wellington, New Zealand

Welcome to our 34th sale. This bi-annual auction should prove to be amongst the best that we have held as similar to last year's sale, it comprises over NZ\$1.1 million of estimates. We are honoured to feature stamps from several major collections of outstanding quality:

- New Zealand SG 1 ex Rowland Hill presentation set.
- New Zealand SG 1 x 2.
- 1906 1d claret Christchurch Exhibition, MUH.
- 1906 1d claret Christchurch Exhibition, FU.
- 180 collections, all world, including about 40 New Zealand.
- Extensive lots of Full Face Queens, over 2,000 in total!
- Good range of early New Zealand to GV.
- Over 90 Red & Blue Boy Healths.
- Strong NZ Life Insurance section.
- Australian States, Cape of Good Hope, ex John Lovis.
- Fantastic range of Great Britain.
- Overall the property of 80 vendors.



We are certain that there is something for everyone in this sale.

We urge collectors planning to attend this sale not to leave their viewing until the day of the sale as not too many people can view the same item simultaneously – so come on the Thursday or Friday – or arrange to view prior to Wednesday 19th September at our premises in Otaki! We are only 20 minutes from Paraparaumu Airport and ten minutes from Waikanae commuter railway station. We can pick you up from either! (By appointment only).

Like last year's sale we expect a huge interest with a large number of room bidders. My thanks go to Chris Burt, David Smitham, Alan Jackson, Maree Malin, Ken Markham and Simon Smelt, who have produced another great catalogue for our 34th sale, ably assisted by our office staff of Jan Macdonald, Kirsten Fulford, Keren Malin, Paul Stark and Jane Smelt. We look forward to your participation in this sale and wish you well with your bidding.

John Mowbray
Managing Director

MOWBRAY COLLECTABLES

Private Bag 63000, Wellington 6140, New Zealand

Ph +64 6 364 8270, Fax +64 6 364 8252, Email auctions@mowbrays.co.nz

CONDITIONS OF SALE

1. INSPECTION : No lot is available for inspection by post.
2. EXTENSION: extensions for certificates will only be granted on application prior to the conclusion of the auction. John Mowbray International will submit all items so requested by successful bidders to the reputable authority of their choice, in most instances this would be the Royal Philatelic Society of New Zealand, or the Royal Philatelic Society, London. The cost of certification + postage and handling will be charged once the relevant clear certificate has been received.
3. BIDDING
 - 3.1 Bidding either in absentia or in the room will bind the bidder to these conditions of sale.

Subject to any reserve price, the highest bidder shall purchase the lot: any dispute arising as to who is the highest bidder shall be determined by the Auctioneer who may offer the lot again.

The Auctioneer may group, split up or withdraw lots, and transfer bids to identical lots at his discretion.
 - 3.2 The bidder shall be deemed to purchase as buyer unless prior to bidding he has given the Auctioneer a copy of a written authority to bid on behalf of another person.
 - 3.3 Where an agent purchases on behalf of an undisclosed client, such agent shall be personally liable for payment of the purchase money to the Auctioneer and for safe delivery of the lot to the said client.
 - 3.4 Vendor bids shall not be accepted.
4. BIDDING INCREMENTS: Postal bids must comply with the following steps:

Under \$300 - \$10 increases	\$1,000-\$2,000 - \$50 increases
\$300-\$500 - \$20 increases	\$2,000-\$5,000 - \$100 increases
\$500-\$1,000 - \$25 increases	

Otherwise, the regulation of bidding is at the Auctioneer's discretion.
5. ABSENTEE BIDDERS: Bids will be accepted from persons unable to attend the auction, and their bids will be treated in utmost confidence and managed as though the bidder is in the room. The Auctioneer shall not be liable for errors or omissions in executing bids.

Absentee bidders, who have not seen the lots they are buying, may reject any lot with the exception of bulk or mixed lots and collections, where the description is not in accordance with that given in the catalogue. However, any such lots are only returnable within forty-eight (48) hours of receipt, and in the condition received.
6. ESTIMATES: These are conservative. Bidding will commence at a bidding increment over the second highest postal/ absentee bid received prior to commencement of the auction. Where one or no bids have been received, bidding will commence at seventy percent (70%) of the lot estimate.
7. PAYMENT: Lots will be at the buyer's risk from the fall of the hammer but title shall not pass until payment in full has been made of the purchase price (hammer price plus 17% buyer's premium (plus GST on buyers premium for NZ buyers) and, if applicable, interest). Payment and clearance of lots by room buyers may be carried out on the day of the sale. Payment by absentee bidders must be made upon receipt of invoice. Payments not received within 30 days of auction date will be subject to 2% penalty interest per month.
8. No GST is charged on the hammer price, but purchasers outside New Zealand undertake that neither they or an associated person will cause the goods to be re-imported into New Zealand in substantially the same condition in which they were exported.
9. FAILURE TO PAY: If the buyer breaches Condition 7, the Auctioneer, without prejudice to any other rights available to it, shall be entitled without notice to the buyer to exercise one or more of the following rights and remedies:-
 - 9.1 to terminate the contract with the buyer and any monies which the buyer has paid to the Auctioneer on account of such purchase or purchases shall be forfeited;
 - 9.2 to terminate the contract, resell the lot at any time by public auction and the buyer shall pay to the Auctioneer any resulting deficiency in the purchase price (plus interest) and insurance. Any surplus shall be paid to the vendor;
 - 9.3 to apply any monies at any time due by the Auctioneer to the buyer in payment of the purchase price (plus interest). The Auctioneer shall have a lien over any property of the buyer in the possession of the Auctioneer, in order to secure any monies due to the Auctioneer; and
 - 9.4 to proceed against the buyer for damages for breach of contract.
10. The Auctioneer reserves the right to refuse admission to any person to either viewing or the sale room, and the Auctioneer may refuse any bid.
11. GOVERNING LAW: These conditions shall be governed by and constructed in accordance with the laws from time to time in force in New Zealand and the parties hereto irrevocably submit to the non-exclusive jurisdiction of the Courts of New Zealand.

VISIT OUR WEB-SITE TO VIEW THE CATALOGUE AND PLACE BIDS:

www.mowbraycollectables.com

INSPECTION OF LOTS

At the premises of Mowbray Collectables, Main Highway, Otaki, by appointment: Monday 25th February to Wednesday 13th March, during normal office hours;
at the West Plaza Hotel, Wellington: Thursday 14th & Friday 15th March - 10am to 5.30pm,
and Saturday 16th March prior to the Auction - from 9am.

BIDDING

For those not attending the auction, bids can be placed by mail, phone, fax or e-mail. Such bids should be received in our office no later than 8am NZ time **(GMT + 13 hours)** Saturday 16th March **(at your risk if not received by the auctioneer in time).**

Telephone bidding may be made during the course of the auction **by prior arrangement only.**

BUYERS PREMIUM

Buyers Premium of **17%** (plus GST on buyers premium for NZ buyers) will be added to the hammer price of each lot. (All buyers please note: no GST will be added to the *hammer price* of lots).

ESTIMATES ARE IN NEW ZEALAND DOLLARS

EXCHANGE RATES

At time of going to press and subject to change: NZ \$1 = UK 54p, USA 71c, Euro 62c, Australia 98c

PHOTOCOPIES/SCANS OF LOTS

Available on request for single items or sets (within reason). We regret we cannot supply copies of bulk lots.

ALL LOTS ARE ILLUSTRATED ONLINE www.mowbraycollectables.com

WE ACCEPT ALL MAJOR CREDIT CARDS

Credit card payments will incur at surcharge of 2% for Visa/Mastercard, and 3% for American Express/Diners.

BIDS UNDER 70% OF ESTIMATE WILL NOT BE ACCEPTED

as this is the reserve on all lots. No vendor bids shall be accepted

Mowbray Collectables - Registered Auctioneers

UNCONDITIONAL GUARANTEE

Every lot in this auction is unconditionally guaranteed to match the description & be genuinely as described. Any lots found not to match our description may be returned within seven days for credit or refund.

YOU CAN BID IN OUR SALES WITH CONFIDENCE

EXPLANATION OF SYMBOLS & ABBREVIATIONS

*	Mint never hinged	/	Mint & used	pmk	Postmark
MUH	Mint never hinged	L	Label	h/s	Handstamp
M	Mint hinged or unused	F	Forgery	b/s	Backstamp
FU	Fine Used	C	Cover/Postcard/Entire	FDC	First day cover
GU	Good used	cds	Circular date stamp	P	Proof
U	Used	m/s	Manuscript OR Miniature Sheet	PPC	Picture Postcard
PU	Postally used	CTO	Cancelled to Order	H/H	Heavily Hinged
o/c	Off centre	SG	Stanley Gibbons	MNG	mint no gum
OG	Original gum	CP	Campbell Paterson	R	Revenue
E	Essay				

COIN & BANKNOTE PUBLIC AUCTION

Our 22nd **Coin & Banknote Auction** is on Friday 15th March 2019, commencing at 1pm at the same venue. **View catalogues online at www.mowbraycollectables.com**



407



411



414



461



440



451



416



502



Ex 513



499

COLLECTIONS and ACCUMULATIONS

1	/	Aden 1937-53 colln on pgs. Noted: 1937 Dhows sets mint & FU; 1939 Pictorials set mint. These alone cat £2120. Total 53 stamps.	\$1,000
2	/	Ascension 1922-76 mint & used colln on pgs identified by SG No's. Noted mint: 1922 Badge ovpt set of 9; 1924 Badge set (3/- rounded corner); 1934 GV Picts set; 1935 Jubilee & 1948 Wedding sets; 1938 GVI Picts set with apparently all perf vars (27 stamps); 1956 & 1963 QEII Picts set. Used: 1922 Badge ovpt & 1924 Badge sets (both sets some toning); 1935 Jubilee set on cover to England. Good cv.	\$1,500
3	M*	Ascension 1922-70s strong mint colln. Incls 1924 set to 3/-, GVI apparently all perf varieties etc; Silver Wedding etc. Over 300 stamps. SG cat £1500+.	\$800
4	/	Australian States colln of mostly used NSW, Queensland, South Australia & Victoria, arranged in large Davo s/b. Very good range, considerable dupn, incl numerous higher cv early items (along with the common later material). Cond varies but many are fine. A few NSW & Victoria with details of auctions in which they were purchased (as good individual items). Approx 1200 stamps (NSW 330, Qld 200, SA 250, Vic 440). Viewing essential. Ex Lovis.	\$3,000
5	U	Australian States mostly used collns on pgs annotated with SG No's. Noted NSW: 26 imperfs from 1852, 5/- Map x 2, total 240+ stamps; Queensland: 50+ low value Chalons, 10 high val Chalons to 10/-, 200+ stamps; South Australia: about 30 imperf/roulettes, 230+ stamps; Tasmania: about 40 imperfs, 30 perf Chalons - 170 stamps; Victoria: 25+ imperfs (incl 2 half lengths on front) - 300 stamps. Western Australia: SG 1 x 2, 3, 6a, total 7 imperfs - 160+ stamps. Very mixed cond but very high cv.	\$4,000
6	U	Australia 1913-65 used colln in binder on annotated paper, mostly complete. Apparently missing only 10/-, £1 Roos & 5/- Bridge. Some mixed cond in key early commems. Incl specialised Roos & GV Heads. Also some later era Dues & GV etc accum on Hagners (about 350). Good CV. Mixed condition.	\$500
7	/	Australia 1913-1970s Commems near complete incl 5/- Bridge cto; Anzacs, MacArthur etc mint; 1938 Robes chalky 5/- & 10/- imprint blocks mint/MUH (tone spot on 2 x 5/- stamps); £1 imprint pair mint; Arms set to £2 LH mint; BCOF set mint. No Roos, GV Heads or sterling Navigators. Also 5/10d mint parcel label (embossed head & surrounds only). Over 500 stamps, predominantly mint. SG cat £1500+.	\$1,000
8	/	Australia 1913-83 colln in 2 vol, clean Roo set to 2/-; 5/- 3rd wmk GU & multi A "OS" VFU; 1934 MacArthur to 9d used, Anzac mint, Robes to £1 inc FU/VFU; some 1940s in inscription blocks, group of GV 1d plate flaws, OS ovpt complete (VFU excl 1 GU); BCOF set mint/used. Nearly complete 1930s onward.	\$600
9	/	Australia 1913-2000s comprehensive specialised mint & used colln in 2 springback albums annotated by SG No's. The used component incls mostly identifiable pmks. Noted mint: Roos 1st wmk to 1/-; £2 Roo specimen; 13 other Roos to 10/-; 53 GV heads all vals to 1/4d; commems & later defins appear complete (except bridge set) incl 1928 Exbn m/s, 1948 Arms 10/- to £2 specimen ovpt set, 1964 Navigators set. Used: 560+ Roos incl 4d x 12, 5d x 9, 5/- x 19, 10/- x 10 (incl 1 on cover), £1 brown/blue, £1 grey x 5 & £2 (poor cond); GV heads x 1100+ incl 1/4d x 2; commems incl bridge set & later defins appear complete, noted especially 1935 2/- Silver Jubilee horiz strip of 4 FU. Also 8 flight covers incl 1 (rough cond) with 10/- Roo & 2/- Silver Jubilee, despite some minor faults a remarkable assemblage. Huge cv.	\$8,500
10	/	Australia 1913-1966 mint/muh/used colln in Davo album with dustbox - key items generally absent. Noted Roos to £1 grey - mixed cond; no 5/- Bridge. OS stamps ovpts only; Kookaburra m/s & BCOF set present (5/- perf tone). Cat £3500+.	\$1,000
11	/	Australia 1913-51 colln on 29 pages, Roos used to 5/- (4), Exbn m/s, handy commems in blocks of 4 (no 5/- Bridge). Mint & used.	\$1,250
12	U	Australia 1913-94 used colln in 2 Seven Seas albums with slipcases, all stamps in mounts. Incl specialised Roos to 5/- & GV Heads; most key early commems (no 5/- Bridge); then virtually complete from 1940 (no £2 Navigator), incl 1967 Xmas setenant block of 7. AAT complete.	\$425
13	U	Australia 1913-94 used colln in 2 Seven Seas albums, all stamps in mounts. Noted specialised Roos to 2/- & GV Heads; most key early commems (no 5/- Bridge); virtually complete from 1940 (no high value Navigators), 1971 Xmas setenant block of 7 MUH. AAT complete.	\$400
14	*	Austria 1945-2003 colln, nearly complete, in 4 looseleaf albums (Vols 1-3 are high quality Borek German hingeless, Vol 4 is "Wiljef" album). Noted many 1990s-2000s m/s or sheets of 4, 8 or 10. Very attractive colln. SG approx £6000. MUH.	\$1,600
15	M*	Baltic & Ukraine 1910s-1990s interesting colln of regions incl various occupation issues Poland/France/Germany/Russia. Latina Elley ovpt Pastmaka 2 stamps on pieces with certs (Michel IA & IIA); 4 primitive stamps h/s Walmeera. Issues incl 1931 Air charity (SG 208A) MUH block of 8. 1923 high values mint/MUH, 1940 defins to 1L in blocks of 30. Estonia incl German occupation Durrat ovpt (Mi 1a & 2) mint, rest according to Album Weeds St Petersburg 1R private post used; Wenden SG 1 & 3 (may be forgeries). N Poland occupation etc & Klaipeda, Memel sets. 4 covers.	\$1,500

16	/	Belgian Congo 1886-1960 virtually complete colln on annotated pages. Mix mint & used. Noted 1886 5f purple, mint (minor gum blemish); 1887 5f purple, 5f grey (both used) & 10f orange, mint; 1887 3f 50 on 5f violet ovpt, FU; 1889 5f grey ovpt, mint (back thin). All these 6 stamps have cert marks. Also 1941 Albert Memorial sets perf mint & imperf MUH. About 400 stamps. STC £5675 + US\$120 (imperf set).	\$1,750
17	M*	Belgium, Belgian Congo 1890s-1990s interesting colln incl occupation issues & flight covers. Various Exposition stamps. Scarce block Ships Memorial Fund (HHS Vindictive), 7 diff 1912 set on 2 reg covers "Le Havre" Special; p/c with German Occupation stamps rebranded in Netherlands for redirected postage to Russia (x 1915), Eugen & Malmedy set on R cover, Allemugn Deutschland set mint, 1936 35c & 1F stamps with ord labels (ex booklet) - 68 diff mint/MUH; Legion Wallonie etc Cinderellas; 1953 Railways to 300F MUH (missing 2 minor stamps) interesting Air & WWI zones. Belgian Congo 1894 30F50, 5F, 10F mint (minor tone spots on gum side). Very huge cat. MUH/mint/used.	\$1,000
18	U	British Commonwealth 1870s-1980s x 3 dealers stockbooks of used. No Australia, NZ, UK or Canada. Varied but mostly lacking higher values. Some useful Ceylon noted: 1882 20c on 64c, 1885 5c on 4c, GVI SR etc. Over 2000 stamps. Stated to retail at \$2400.	\$500
19	*	British Commonwealth 1870s-1980s x 4 vols of dealers stockbooks. Mint, some MUH. Strength in GVI & early QEII but lacking scarce. Good quality throughout. Noted Bahamas 1942 Columbus to £1, Mauritius 1878 50 on 1/- (adhesions). c4500 stamps. No UK or Dominions.	\$1,500
20	/	British Commonwealth c1880s-1980s accum in small carton noted useful but untidy Australia colln, 1937, 1953 Coronation omnibus collns, useful Pitcairn but also small colln early Russia.	\$500
21	/	British Commonwealth 1898-1937 seln on pgs & stockcards, incl Antigua: 1921 £1 GV on large piece FU, 1935 Silver Jubilee on cover to England; Cayman Isl: 1935 Picts set on piece FU (tropicalised) & MUH set; Gibraltar: 1898 QV sterling set mint; British Guiana: 1934 GV Picts set mint; North Borneo: 1939 Picts set mint (\$1 & \$4 each toned perf).	\$850
22	M*	British Commonwealth in 2 stockbooks with strong GVI, notably Ascension, Ceylon, North Borneo, Seychelles etc. 1000+ stamps. Mint/MUH.	\$1,200
23	/	British Oceania c1880s-1977 collns in very large Scott "Specialty" album (2 vols in 337 page album), pages complete from beginning to 1977. Mix mint/MUH/used on piece, minor dupn. Cat prices for stamps up to 1970: Br Solomon Isl 213v, £270; Brunei 158v, £548 (incl 1948 \$10m); Fiji 281v, £286; Gilbert & Ellice Isl 237v, £367; Labuan 35v, £46; Nauru 132v, £93; New Hebrides (English only) 124v, £113; N Borneo 154v, £476; Pitcairn 146v, £188; Sabah 25v, £80; Samoa 330v & 1 m/s, £360; Sarawak 107v, £351; Solomon Isl 56v, Tonga 202v, £637; Tuvalu 18v. Total 2200+ stamps, cat well over £3800.	\$1,250
24	/	Bulgaria 1879-1945. Incls 1879 5c, 10c, 25c, & 1fr (1st 2 mint, latter 2 used); 1884 3s, 5s & 15s mint/MNG & 59 FU on piece; + also Eastern Roumelia at end. Cat £2800+.	\$800
25	/	Canada 1853-1973 specialised mint & used colln in springback album, identified by SG No's. Good range all issues. Noted used 1859-64 x 3 sets plus (1c, 2c x 2 each); large Queens x 36 (nice range of shades); small Queens x 75; 1893 set x 3; QV 2 leaf & 4 leaf sets; EVII set; Quebec set; 1930s era commems appear complete. Mint: Jubilee short set to 50c; QV 2 leaf & 4 leaf sets; Quebec sets; 1915 5c, 20c, 50c War Tax; 1930 era commems mostly complete etc. Some mixed cond, toning in the used earlies.	\$3,750
26	U	Canada c1859-2004 used colln in 2 Davo standard albums (1 with slipcase) - pages complete (from 1851) - good range, missing only better early items - virtually complete from 1930s but few modern m/s's. Mixed cond to 1930s.	\$400
27	/	Canada c1859-1982 mix mint/used colln in SG album (pages complete from 1851). Good range from QV (all used). Noted Quebec short set to 15c (15c heavy cancel) used. STC approx £2200 to 1953.	\$1,000
28	/	Canada 1859-70s colln. Noted 1897 Jubilee to \$2 mint or used. Handy GV mint. Also Newfoundland, New Brunswick. Condition varies. High cv. Mint & used.	\$2,000
29	/	Canada 1868-2013 mint/MUH/MNG/used colln in 4 s/b's. Noted 1897 Jubilee 10v to 20c mint; Quebec set MNG/mint; GV to \$1 mint etc. Some mixed cond, especially with earlies.	\$1,600
30	/	Canada & Newfoundland c1870-2002 mostly used colln in 2 albums. Noted 100+ small QV; good range 1920s Commems incl most key values & some dupn; Newfoundland: 1937 additional Coronation x 2 sets mint - both perfs. Several thousand stamps.	\$600
31	U	Canada c1900s-50s EVII - early QEII pre cancels colln in album on specially designed pages, arranged by town/province & annotated with "The Standard Canada Precancel Catalogue" 2000 Ed numbers & cat prices (C\$). About 750 stamps. STC C\$5850+.	\$1,500
32	/	Ceylon c1857-1980 colln on annotated pages with specialisation. Noted 11 QV Recess issues plus 60 other QV, good range thereafter. Well over 500 stamps, mix mint & used.	\$300
33	/	Ceylon 1860s-1960s in 2 s/b's. Chalons with some faults. Noted: 1885 10c on 16c, wmk CC, SG 161, cat £3000 used but very faded. Useful to GVI, defins to 5R complete, mint. Many later.	\$600

34	/	Channel Isl & IOM 1940-98 dealers stockbooks MUH & used (few earlies mint) with good coverage, though scarcer absent. Over 5,000 stamps & some 2,500 from Jersey, remainder Guernsey, Alderney & IOM.	\$1,500
35	/	China 1878-1950 old time colln mostly used. Noted 1878 1ca-5ca used, & many other better items, but condition is variable. High cat value.	\$2,500
36	/	China 1900-1932 misc but interesting group. 2 p/cs (1905?) franked 1c Imperial Post, depicting British & Russian soldiers in China. Mint issues of Foochow (½c to 40c), Hankow, Kewkiang, Chunking & Chefoo. SG cat £650. 1932 science set FU/VFU.	\$1,000
37	M*	China 1949-2005 mostly MUH colln in 4 Lindner hingeless albums (excellent condition), seln to c1960 & late 1970s-2005 & appears reasonably complete from c1982-2005. Approx 2000v & 100 m/s, on 220 pages. Weighs 11kgs.	\$2,000
38	/	China 1960s, '80s stockbook with 1972 Canal, 1973 Archaeology, 1974 Acrobatics & 1976 4 Year Plan & Going to College sets, all MUH. Also 3 1963 Pandas used & large private presentation album. SG cat c£600.	\$700
39	/	Cook Isl 1892-1966 pre-decimal simplified colln mint & FU in small Lighthouse s/b. Appears fairly complete except for high values. Noted 1892 1d-10d set FU SG 1-4, 1901 1d crown ovpt SG 22 MNG, ½d - 1/- Makea/Torea set mint & FU, 1920 ½d - 1/- set ditto, FV 2/-, 3/- sets (both ovpts) mint, Arms to £1 mint. Similar completeness for Aitutaki & Penrhyn. Well presented. SG £4000+.	\$1,600
40	/	Cyprus, Gibraltar, Malta 1870s-2000s x 2 s/bs, high vals absent but GV to 1/- & GVI to 5/- in some cases much dupn. Notably strong in GVI Malta. Mint, used, some MUH. Over 2000 stamps, stated to retail over \$2000.	\$500
41	/	Czechoslovakia 1918-1992 varied 5 album colln. 1918-75 almost complete mint/used in 2 albums incl some shade & perf varieties & issues with tabs. Noted 1920 Air, 1920 Tete Beche SG 193ba, 1925 Olympics, 1926 Sokol, 1925 Masaryk with first day cancels, propaganda cancels 22/9/38 day after Czech concession to Germany, 1938-39 SG 391 mint & 393c mint (3); 1945 m/s SG 477a used, many m/s (cat £1000+). Album of Art sets MUH 1966-91 (cat £480+). Album 1918-39 with many shades etc of Castle issues. Album 1980-91 MUH. Few thousand stamps.	\$1,200
42	U	Denmark 1851-1929 used colln in s/b from 1851-54 4sk (11) with 1854-59 to 16k (2), 1863 rouletted 16k & good range of later incl 1912 surcharges, 1912-15 GPO 5kr high value (3), 1914-15 Newspaper & Official sets, 1918 27ø surcharges less 10ø wmk crown, 1926 Official set. Some variable cond among earlies but generally fine & excellent basis for expansion. About 300 stamps, marked items only cat £5000. With 2016 AFA catalogue.	\$1,000
43	/	Egypt 1866-1983 new 2 vol colln. Useful earlies noted 1932 100m on £1 mint, 1938 Farouk birthday etc. Incl British Forces, m/s etc. Largely complete from 1920s, mint & used.	\$1,250
44	/	Egypt 1866-1959 specialised mint & used colln in springback album, identified by SG No's. Noted used: 1866 issue x 21 incl 10pi x 2; 1867 x 20 incl 5pi; 1872-4 issues x 60; 1920s-30s commems & defins virtually complete; 1931 Graf Zeppelins (plus date error) etc. Mint: 1866 10pa, 20pa, 1pi, 2pi; 1867 set plus extras; 1872-4 x about 50; then mostly complete incl 1920s-30s era commems & defins; 1931 Zeppelins (plus date error) etc. Huge cv.	\$5,000
45	/	Falkland Isl 1891-1960 mostly mint on pgs - noted QV x 15 (incl 6 used) to 9d; EVII x 10 (incl 4 used) to 2½d; 1933 Centenary short set of 8 to 1/-; 1935 Silver Jubilee sets mint & used; 1938 GVI Picts set of 18; 1960 Birds set. Also FID x 11 stamps.	\$600
46	/	Fiji 1870s-1984 strong colln. Noted 1871 3d mint, 1872 2d on 1d block of 4 used, 1874 Gothic 2c on 1d, 6c on 3d used, EVII & GV to 5/-, 7 x 1947 Postage Dues etc. Hundreds of stamps, several covers, some revenue & Government franks.	\$1,750
47	/	Fiji 1938-46 very specialised colln of GVI 2d & 2½d. Map defins - dies, plate flaws etc. Noted 9 x SG listed flaws SG 253a & b, 6 x extra island flaw (SG 256a etc), used. Incl 2d Die I c40 mint, die II c30 mint, mainly MUH but smokey gum. Cat c£3750.	\$1,000
48	/	Foreign c1860s-1920s colln in large Old Time album - about 2500 stamps. Incl many classics/1st issues etc but usual very mixed cond. Well worth a look.	\$750
49	/	France 1841-1984 in 2 printed albums. Scattered earlies then substantial. Noted: 1877 5F VFU; 1900 2F used, 5F mint; 1917 35c & 55c Orphans mint; 1918 Red Cross mint; 1926 20F mint; 1929 Sinking Fund MUH; 1937 55c Museum mint; 1949 10F & 100F Citex MUH, 1950 National Relief MUH. Very high cv. MUH/Mint/Used.	\$3,000
50	/	France 1849-1969 colln in Davo standard album, mix mint/used. Incl good range of earlies (mixed cond), very few gaps from 1924. STC £5800+.	\$1,500

BIDS BELOW 70% OF ESTIMATE WILL NOT BE CONSIDERED

51	/	France 1849-1978 specialised mostly used colln in Scott album. Noted 1849 15c Ceres (about 2 margins), 25c (4 margins very close at top); 1F red (3 nearly 4 margins, minor faults), 10c Napoleon President (3 margins), 1F Napoleon (2 margins) etc then very good coverage Defins & Commems; 1917 War Orphans short set to 50c mint & 1F FU; 1922 War Orphans set (mint) etc. Cat £24000+.	\$6,000
52	M*	France & Colonies 1850s-1960s large s/b crammed with hundreds of stamps. Useful earlies & commems. Lacking top values except some good airs, incl 1947 500F used & 1957 1000F MUH.	\$1,200
53	U	France c1859-1983 Postage Dues colln on annotated pages - 200+ stamps. STC £2500 but 4 early items not counted. Nearly all used.	\$750
54	/	France 1870-1960 unusual grouping of select items. 1870 Balloon Mail cover franked 20c, canc 25 OCT 70, addressed Gironde, probably via balloon Vaubun. Pigeon post souvenir p/c from same period. 4 early Air p/cs, 2 flown covers (1914 & 1924). 1935 Rocket Mail cover h/s "Experience Interrompue". Vincennes Chamber of Commerce 10c 1914 local mail MUH (Yvert cat €500). Petain/Laval 30c forgery in sheet of 20 MUH; Petain 1F50 forgery used 2.10.43, misc others.	\$1,250
55	U	France 1921-c1980s pre-cancels colln on pre-printed pages (to 1951) then colln on annotated pages from 1922 to 1980s (some 1922-51). Noted 1921 15c, 30c, Postes Paris; 1921-2 5c Postes France. 90+ stamps. 1st 2 pages alone cat €500. Also 2 pages 1901-64 Military frank stamps (about 50, dupn).	\$400
56	/	France 1978-2010 mostly used colln on pre-printed pages in 5 binders, also another binder & s/b modern MUH sheetlets/sets. Appears virtually complete. The 1st 5 binders STC £7340 + €350.	\$1,875
57	/	GB 1840-1980s reasonable coverage colln in s/b. Incl: 1d Black 4 margins, plate 2 red Maltese Cross; sound QV line engraved 8d & 1883 2/6d & 5/- GU/FU; EVII 5/- & £1 (small thin) GU, 4 x 5/- 1st Seahorses, many later.	\$550
58	*	GB 1840-1968 mint colln in Lighthouse hingeless album, stamps identified by SG No's (in pencil). Noted: 1841 1d Red 2 margins; 21 other ½d - 2d engraved perfs; 41 surface to 2/6d; Jubilee set to 1/-; EVII DLR set to 10/-, 23 extra later issues to 2/6d; 2/6d x 2, 10/- (small back thin) Seahorses; 1924-5 Exbns; 1951 high vals, early QEII phosphors etc, Regionals, Channel Isl; 28 Dues to £1; Officials stated to incl: SG O1, O4, O5, O6, O14, O17, O18, O45, O50, O65, O66, O69, O70, O71, O74, O76, O83, O84 & other low vals. All appear to be unused but some especially QV era may be cleaned/regummed etc.	\$6,500
59	M*	GB 1840-1970, mint/muh/used colln in Davo album with dustbox. Noted 1840 1d Black & 2d blue (both 3 margins); 6d, 10d, 1/- embossed only 10d cut to shape; key items generally absent. Incl QEII phosphors & a more than useful section of QV/EVII officials - these alone cat £5000+ (incl EVII 2½d I.R. used (thinned) & Postage Dues almost complete (£500+). Expect variable cond especially with earlies. Mint/muh from c1940. Cat £23000+.	\$4,000
60	/	GB 1840-1935 basic collection, commencing with 1d Black (plate 5) MG - spacefiller. Key stamps absent & mint from circa QV Jubilee, no Postage Dues & only a few Officials present. Variable cond especially with earlies. Cat £7000+ to 1935.	\$500
61	/	GB 1840s-1970s rather basic colln but noted 2 x 1d Blacks. Mint & used.	\$400
62	U	GB 1840-1970s extensive used colln in Windsor springback album, stamps identified by SG No's. Noted 1d Black (3 margins) on part entire, 39 1d & 2d imperfs incl multiples; 1d 4 corner letters plate no's complete 71-225 (no 77!) & 2d blue all plate no's except 12, ½d all plate no's except 9; embossed 6d x 2, 10d, 1/- x 2 all cut square; 100+ QV surface low vals; 1867 5/- x 6, 10/- x 2 & £1; 1882 2/6d x 6, 5/- x 7, 10/- x 4, £1 brown; £1 green x 2; EVII 2/6d x 7, 5/- x 4, 10/- x 2, £1; Seahorses to 10/- (5 x 10/-) etc etc. Some minor faults/mixed cond but overall a remarkable assemblage. Massive cv.	\$8,500
63	/	GB 1840-2004 mostly used colln in springback album on Windsor pgs (SG No's indicated). Noted: 1840 1d Black & 2d blue (each about 1-2 margins), 1d red 4 corners plate no's missing about 20 incl key numbers; 60+ surface issues incl 6d coloured letters on entire; 1883 various designs set (reasonable cond, good colours); reasonable coverage from thereon but rather untidy/mixed cond. High cv.	\$1,500
64	/	GB 1841-c2000 general colln in 5 albums though key items are absent. Noted 1 red QV x 2 underprints, 127 booklets 1970s + mint/MUH.	\$475
65	C/	GB 1847-92 Embossed & line-engraved colln in s/b. Embossed 6d & scruffy 1/- cut square, 3 margins, used. Surface printed no letters x 13; small letters x 12; large white letters x 45 incl 2/-, 2 x 10d, 2 x 5/-. Coloured letters x 54 incl 4 x 2/6d, 2 x 5/-, 1 x 10/-. 1880-81 x many incl 9d good colour. Various Jubilees. Also 3 covers: 1862 2 x 6d (SG 68) Plymouth to Melbourne (receiving wmk), env damaged; 1866 4d & 6d (damaged) to Sydney & 1807 1/- (damaged) to Boston.	\$1,200

66	U	GB 1882-1903 Officials used colln on pgs. Noted: IR Official: SG O1, O4 (horiz pair), O6, O7 (faded); O15 (very heavy pmk), O18 (GU), O24 (faded). OW Official: O31, O33, O34, O36, O37, O38 (faded); Army: O45, O50 (GU). Govt Parcels: O61, O62, O63 (very heavy pmk), O64 x 2 (1 VFU), O67, O68, O71, O72, O77, O78. Board of Education: O84, O85. Admiralty: O103, O104, O105 (on piece), O106. High cv.	\$2,500
67	/	GB 1971-c2010 extensive mint & used colln in 6 springback albums, rather untidy but appears to be fairly complete, incl a good seln Machins. Many items on piece as collector has had an eye for pmks.	\$1,500
68	/	GB c1971-2000s accum/colln mostly Machins & booklets in 4 s/bs & 3 bags, thousands of stamps. Some items labelled duplicates/spares. Very untidy.	\$400
69	*	GB 1991-7 colln in Windsor album incl strips, booklets & greeting panes, few NVI & Y series panes missing, Prestige panes complete. SG cat £1400. MUH.	\$750
70	/	Germany 1860s-1990s dealers s/bs, wide coverage: States, Empire, Republic, 3rd Reich, Occupation, West & East, West Berlin. MUH, mint & used. Many thousands incl m/s.	\$1,250
71	/	German States, duplicated stock of many hundreds, mostly Bavaria & Wurttemberg, in old 32-page s/b. Also range of earlier used of Oldenburg (20), Prussia (70) & Saxony (2), cat £2750+, on 4 loose pages (incl some pmk interest). Some faults.	\$400
72	/	German States c1860s-1920s mostly used colln on pages. Consists of Bavaria, about 175 stamps STC £1200 incl 1914 5m (cat £31) & 20m (£130). Also Danzig (60, £20); Saar (25) & Wurttemberg (about 60, £220).	\$500
73	/	Germany c1860s-1970s mostly used accum crammed into bulging 48 page (24 leaves) Davo s/b - incl German states, West Berlin & Occupations etc. 1949-50 page alone STC £2300+. Probably in excess of 10,000 stamps.	\$2,000
74	/	Germany 1870s-1945 dealer's stock of many thousands in large dilapidated stockbook. Mint & used.	\$500
75	U	Germany 1872-2005 used colln in 3 Davo standard albums (but all stamps in mounts). Album 1: to 1945 good coverage except no key items & earlies present, mixed cond. Album 2: West Germany 1949-90 good range earlier period, virtually complete from 1954. Album 3: Unified Germany 1990-2005 virtually complete. (Note: no 1945-9 Occupation issues).	\$1,250
76	/	Germany 1923 colln of inflation era issues. Used: 300+ stamps (incl 25 high cat ones which are presumed fakes); 13 covers mint. 30 diff issues in complete sheets. Well kept & with margins, useful for varieties & job & sheet numbers. 500T rosette issue has job no. unrecorded by Michel & printed twice: H5582. 23 (sheet lacks right selvedge).	\$600
77	/	Germany 1946-1990 incl Allied Occupation Zones & West Germany, mint & mostly used, in good cond Davo standard album with dustbox. SG cat £1280+.	\$400
78	/	Germany-West 1949-69 useful colln on various sets of printed pages with overlaps. Better noted incl 1949 Parliament & Stamp Centenary mint, UPU MUH, Posthorns 50pf & 60pf mint etc. Few FDCs, m/s etc. Thousands of stamps mint/MUH/used. Weighs 4.2kg.	\$1,000
79	U	Germany-West, FU sets incl 1949 Refugee Relief, 1951 Charity & National Philatelic Exbn, 1951-55 Humanitarian Relief with extra 1952 top val & West Berlin Bells (clappers to centre) set SG B101-5. 46 stamps. Cat £1500.	\$600
80	/	Germany-West Berlin 1949-58 small colln with better, eg: 1948 50pf black ovpt FU, 1949 Buildings to 3DM FU; UPU 16-50pf FU; Goethe set FU; 1950 Philharmonic FU; 1951 Stamp Day FU; 1952 Famous Berliners FU; 1958 3DM FU. Also 1949 UPU 12, 16 & 24pf MUH. SG cat £1000+.	\$500
81	/	Germany-East 1949-90 virtually complete in 2 Davo standard albums (but with all stamps in clear mounts), only about maybe 10 gaps mainly in earlies. (All FU except 1st 7 sets mint).	\$850
82	/	Germany-East 1949-1975 mostly used/cto colln & reasonably complete in good cond Davo standard album. Also present some mint (eg 1951 Chinese Friendship set, 12pf thinned & not counted in cat val). SG cat £2200+.	\$500
83	C	Gilbert & Ellice Isl, Kiribati & Tuvalu 1911-1980s strong colln in stockbooks etc. Incl EVII ovpts sets mint & used, plus extra 1/- used; various 1911 Piries; GV mint to £1 (5/- toning); used to 5/- (extra 2/-); Jubilees 4 mint, 1 used; GVI to 5/- 2 sets mint & used; 6 x Silver Wedding mint/MUH etc. 8 covers.	\$2,000
84	/	Greece 1861-1970s mostly used colln in Wiljef album, noted 1896 Olympics 1d mint & 10d FU. Also incl Epirus, Eastern Thrace, Greek Occupation Albania etc. STC £1595 (Greece). Over 1000 stamps.	\$500

85	/	Greece 1896-c2002 colln in 3 volumes mint/muh/used, some dupn. Album 1 cat approx £600, Album 2 contains Crete, Italian POs in Crete, Greek issues for Balkans, Dodecanese Isl etc (latter cat £1650+) + misc oddments in stockbook. SG cat £2800+.	\$1,000
86	/	India 1854-1948 specialised mint & used colln on pgs annotated with SG No's - starts with ½ imperf colour trial/proof in deep orange-red, then used imperfs ½ x 9, 1a x 12, 4a x 7 (only 2 cut square); 1855 8a glazed paper mint; 1856 8a white paper mint (toned gum); 1866 6a fiscals x 3 (SG 66) (postally) used, 1895 2r-5r QV mint & used plus approx 120 other QV; 2r-5r EVII used (most telegraph cancels); 1911 GV to 15r mint & 25r used (telegraph cancels); 1926 GV to 25r mint (no 5r) & used; GVI set to 25r mint; 1948 Gandhi sets mint & FU; 1949 Picts to 10r (no 2r); 1955 Picts set mint; CEF good range QV & EVII, GV set mint; OHMS good range incl EVII 2r-25r (15r & 25r telegraph cancels), GVI to 10r FU etc. High cv.	\$5,000
87	/	Ireland 1922-70 mint & used colln on pgs identified by SG No's. Noted mint: 1922 ovpts Dollard set to 10d, Thom to 1/- & Dollard 2/6d (SG 18), 5/- & 10/- each x 2; + 14 later low vals; 2/6d "Free State" ovpt; some better early commems. Used: 58 low ovpts, high values but toned, some useful commems.	\$850
88	*	Isle of Man 1973-92 apparently complete MUH colln in Lindner album with slipcase, plus pages 1993-2001 wth some stamps, plus bundle packs, a few FDCs etc.	\$300
89	M*	Israel 1950s-c2000 in 2 volumes: Vol I to 1980, incl some early tabs (to 1954) complete [cat US\$130+] & balance reasonably complete [cat £330+]. Vol II 1981-2000 appears complete MUH. Cat £1000+, & incl misc loose on inside pocket. Weight approx 3kg. SG & Bale cat £1400++.	\$750
90	/	Italy 1862-1930 superior colln. Good coverage & mostly FU/VFU examples. Noted 1862 80c used (SA 4), pmk date unclear but correct type pmk "...ANTO"; 1889 5 lira, parcel cancel (SA 49); 1922 Philatelic Congress set used; 1923 Manzoni 5 lira mint, no gum. Also express, airs, dues etc & group of apparently better revenue stamps, few local issues & postal stationery. Few mint commems are no gum, c1000 stamps. Sassone cat c€28000.	\$4,500
91	C	Italy-Occupation & locals etc 1890s-1950s interesting small colln. Incl 1894 Milan Stampex cinderella franking, postal cancel. Various ovpts & local issues: Saseno 1923 to Ilisa mint: Aosta, AMG, Campione, Coralia, Istria both sets mint (1940s), Vuja 1952 Campione cover. Also San Marino 1894 1st issue mint. MUH, mint, used.	\$500
92	/	Italy 1930-2001 substantial Italian colln in 7 vols, + duplicates in 3 further albums & packets. Near complete. Noted 1932 Dante set mint & used, 1934 Football set used, 1934 Buenos Aires ovpts set used. Some mid period stamps are mint, no gum. Several thousand stamps, mint, MUH & used, few covers. Sassone cat €7500+.	\$1,500
93	/	Italian Colonies 1870s-1960s superior colln, useful earlies. Noted Aegan 1934 Football set mint (SG cat £800). c400 stamps, mint/used/MUH. Sassone cat c€4500.	\$1,000
94	/	Italian States 1850s-60s quality colln, mainly FU/VFU 4 margin examples & notated per SASSONE (SA). Noted amongst number high cat: Lombardy 1851 15c T2 & 45c used (SA 15, 17); Papal States 1852 3 BAJ brown used (SA 4) & 18 x 7 3c unused, no gum (SA 14); Sardinia 40c used, dealer's cert mark on back; (SA 6); 1854 3 lira, 3 margins used, several cert marks on back (SA 18A); Tuscany 1857 1 crazi used (SA 12); 1860 80c used but cut close all round. Over 120 stamps. Sassone cat €40000+ (excl 2nds).	\$7,000
95	/	Latin America 1860s-1990s unusual accum. Argentina incl 11 x proofs of 1892 Columbus, 1910 Deposition Centenary mint (SG cat £250). Malvinas philatelic covers. Brazil, Costa Rica, El Salvador, Honduras, Mexico incl 1892 set of 12 used (no 5c) cat £350, Nicaragua, Peru, Puerto Rico, Uruguay, Venezuela.	\$750
96	/	Lithuania & Latvia 1918-41 mint/used colln on pages, Lithuania about 140 stamps STC £286; Latvia about 70 stamps, STC £73.	\$250
97	/	Malaya, Singapore, North Borneo 1890s-2001 in large s/b. Rather scattered. Noted: Federated Malay States \$5 probably fiscally used; Malay Union 20c Postage Due (SG D28) used pair; Kedah Silver Wedding, 1950 \$5 mint & 1957 \$5 MUH; Perak 1940 \$1 & \$2 mint (cat £400) but gum toning; & useful North Borneo & Sarawak.	\$600
98	/	Malta 1863-1972 specialised mint & used colln on pgs identified by SG No's. Good coverage & virtually complete from 1935. Noted mint: c1863-81 ½d buffs etc 4 shades (stated to be SG's 5, 7, 11, 13); 1885 set; 1899 set; 1904 set; 1914 set; 1922 self Govt set; 1922 Allegorical set; 1926 "POSTAGE" ovpt set; 1926 Pictorials set; etc. Used: 1922 £1 Allegorical (SG 139); 1926 postage set (no 2/-) etc. High cv.	\$2,500
99	/	Miscellaneous: Red Cross, Scouts, Greece, Great Britain in blue stockbook. About 1250 stamps. Mint/Used/MUH.	\$200
100	M*	Monetary Philately thematic colln 138 page (colln mostly MUH). Noted Israel Coins to 1000m (cat £950). Bronze Medal award at Panpex '77. Capable of expansion.	\$3,000

101	U	Netherlands 1852-2006 used colln in 2 Davo standard albums (but all stamps in mounts) missing most key items but noted 1913 Centenary short set to 5g, virtually complete from 1930s, but missing many m/s's.	\$850
102	*	Netherlands 1961-94 MUH collection in quality Safe Dual Neth album. Also 3 Davo albums for PTT issues covering 1982 to early 1994. High cat.	\$700
103	/	NZ 1850s-1980s collns on printed pages. Noted: FFQ 1/- imperf, star wmk, 4 margins, thin; SSF 2d, 5d, 1/- mint; 1906 Christchurch Exbn 6d (stained); GV 8d Official VFU; 2/- Official used; 1935s mint; GVI Officials complete mint/used; Centennial Officials used; Red Boy postally used; Blue Boy GU/FU.	\$1,000
104	/	NZ 1855-1982 NZ Defins colln in large s/b. Most of value in the 82 imperf & 78 perf FFQs arranged by value & identified by SG no's - imperfs 1d x 15 STC incl SG 4 x 2, 33-5 x 7, 81 repaired, 97 x 4; 2d x 26 - SG 2 x 2, 5 x 2, 9-11 x 12, 36 (etc) x 4, 82, 83 & 96 x 2; 3d x 5 - SG 40 x 2 etc; 6d x 22 incl SG 15 x 2, 85 x 2 etc; 1/- x 13 incl SG 16 & 17 x 2; perfs: 1d x 9 red/orange, 1d brown x 5, 2d blue x 24 (incl SG 92), 2d orange x 6; 3d x 11; 4d yell x 4; 6d brown x 8, 6d blue & 1/- x 9. Mixed cond, huge CV. Good range from thereon but little of value noted except 5/- Mt Cook mint.	\$5,000
105	/	NZ colln in Lighthouse hingeless album: 6 FFQ imperf incl 2d & 6d 4 margins star wmk; 13 FFQ perf; FSF used incl 2/- & 5/-; SSF 1/- mint; 1898s incl 5d, 8d, 9d, & 1/- mint; Chch Exbn & 1913 Auckland Exbn 1906 x 13 Exhibitions mint (6d no gum); GV recess mint & used (excl 2d yellow mint); Victory & 1925 Dunedin Exbn mint (4d 1925 no gum); Red Boy mint, Blue Boy MUH; 1953 QEII Defins MUH; 1898 2/- & 5/- Officials mint; 1925 QVLT 5/- no stop after official mint, GV 8d & 2/- Officials used (8d heavy cancel); Life VR 6d & 1/- used (latter heavy cancel); 2d chestnut no VR used; Arms 7/6d & 30/- postally used; £3.10 fiscal unpunched; 1d King Edward VII Land used; ½d & 1d Victoria Land mint (½d adhesions, touch of toning on reverse).	\$3,500
106	U	NZ 1855-1970s complete used simplified colln in Warwick multiring album. No back of book but incl Health & Xmas. Incls 1/- SG 17 (small thin & tiny pinhole). FSF, SSF, 1898s etc; 1906 Chch Exbn set (3d, 6d CTO); 1913 Auckland Exbn set; 1/- Victory GU, Red Boy GU (minor crease).	\$3,000
107	/	NZ 1855-1978: noted 6 imperf & 10 perf FFQs GU/FU; SSF set mint; 1898 to 2/- mint; Christchurch Exbn mint; 1907 reduced Picts mint; 6d Auckland Exbn mint; GV Recess set mint; 2/- & 3/- GV mint; 1935 Picts & Officials mint, etc. No Healths, Life Ins etc, some mixed cond.	\$1,500
108	U	NZ 1855-2007 used colln in 4 maroon Premier albums, all stamps in mounts. Noted: 10 FFQs mixed cond; 4d, 6d, 1/- FSF; SSF set; 1898 Picts set (5/- damaged); 1907 Pict Officials to 1/- (incl 6d reduced); ½d, 1d Christchurch Exbn; EVII set incl Officials; GV set; Victory & Dunedin sets; 1931-5 Airs; then virtually complete Defins & Commems (no 2d QEII stars); Healths complete (no early m/s). Good cv.	\$1,000
109	/	NZ c1855-1960 eclectic mostly used colln in 2 binders starting with 30 FFQs, range FSF then good range especially SSF 1898 Picts & GV. Incl some multiples & nice pmks. About 1500 stamps, very haphazard presentation & mixed cond. Worth a look.	\$1,250
110	U	NZ c1855-1989 used colln in Premier album, good range, better items incl 4d, 6d FSF; SSF set (5d tone); 2/- Milford 5/- (fiscal); EVII set incl Officials; 1954 QEII Officials set; 1899 Dues to 5d; 8/-, 15/- Arms. Also many other key items cto incl 1924-34 Health (Red & Blue Boys unused no gum). All small s/b flaws etc & RPSNZ Handbook Vol 2 (no dust jacket).	\$1,000
111	/	NZ c1857-c1960s range of hundreds of better items & sets in 2 loose-leaf counter s/bs (1 of used FFQs, 1 of other issues). Noted: 71 FFQs (both imperf & perf to 1/-, incl 4d rose FU), 1898 5/- Mt Cook x 3 mint, 5/- p11 fu, 1908 1d Universal surface print blk of 4 MUH, 1931 Air 3d, 4d, 7d pairs MUH, 1899 6d Due MUH x 2; also Official 2/- Milford FU, EVII set mint, 6d EVII MUH x 3, 2/- Admiral FU etc. Pages priced to \$15,250.	\$2,500
112	M	NZ c1858-1966 colln in Lindner hingeless album. Nearly all mint. Noted: 1898 Picts set; 5/- QVLT Official; 1/- Postage Due; ½d, 1d, 6d Christchurch Exbn; 3d, 6d, 1/- reduced Pictorials; ½d, 1d 3d Auckland Exbn (½d, 1d muh); 1/- EVII Official; 1915 GV recess sets incl Officials; Victory set; Dunedin Exbn set; 1931-3 Airs; 1929-34 Healths; 1935 Pictorial Officials (incl both 9d); 1/3d lemon, 15/-, £1 Arms etc etc.	\$2,000
113	/	NZ 1860s-1990s in Premier album. Fairly complete from SSF incl 1898 & Admiral 2/- Officials & 1940 Centennial Officials used. MUH/Mint/Used.	\$1,000
114	/	NZ 1862-1981 2 vol colln. Incl 1/- FFQ used, FSF to 5/- (2/- faulty), mint SSF, 8d SSF used, plentiful EVII & GV used incl GV 8d blue x 4, 2/- Admiral Official, Red & Blue Boy mint. Around 600 stamps. MUH/Mint/Used.	\$1,250
115	/	NZ 1862-1940 nearly all used colln in Warwick multi-ring album. Noted: FFQs x 13; SSF to 6d (mint); about 200 1d & 2d SSF nice range of shades, dies etc; 5/- Mt Cook x 7 (all fiscal); Christchurch Exbn set (mint); ½d, 1d Auckland Exbn; GV about 250 range shades etc; Dunedin Exbn set (mint); 1931-4 Airs (mint); 1935 Pictorials x 300+ incl 3/- single wmk (mint), etc.	\$1,250

116	/	NZ 1862-1951 colln, mint/MUH/used in Lighthouse hingeless album. Noted 4 imperf & 1 perf FFQs (used), FSF to 1/- used; 1907 6d & 1/- redrawn Picts mint, Christchurch Exbn set mint; Victory & Dunedin Exbn sets mint; 1929-51 Healths mint/MUH, Arms 1/3d to £1 range used incl 12/6d. No Officials, Life Insurance, Express etc. Mixed cond. Jury cat simpl \$5500+.	\$1,250
117	/	NZ c1862-c1987 mixed mint/used colln commencing with 2-perf FFQs range of 1898s (6d, 1/-, 2/, 5/- = fiscals); Christchurch Exbn set mint; Dunedin Exbn set mint & used & Healths: 1929 x 1 mint, 3 used; 1930 x 1 mint, 2 used; 1931 Red Boy x 2 used, Blue Boy x 3 used; 1932 x 1 mint, 3 used; 1933 x 2 mint, 3 used; 1934 x 1 mint, 3 used. Mixed cond.	\$1,000
118	/	NZ c1862-1966 pre-decimal colln in SG pre printed page album & bundle pages - consists mainly standard mostly used colln. Noted perf FFQs x 11; Newspaper stamps x 20+; 2/- FSF (probably fiscal, o/c); specialised FSF incl approx 50 adverts; 1929-34 Healths; 1931-4 Airs etc. Also 16 page bird exhibit - Kiwis (incl mostly decimals) & GVI MUH plate block colln, nearly all values to 3/-.	\$1,500
119	U	NZ 1862-1994 used colln in 2 Seven Seas albums with slipcases, all stamps in mounts. Noted 9 FFQs (mixed cond); 4d, 6d SSF; SSF set (8d cleaned fiscal); 1898-1907 Picts (5/- fiscal); EVII incl Officials sets; GV sets; Victory & Dunedin sets; 1931-5 Airs; then Defins & Commems virtually complete (no 2d QEII stars).	\$600
120	U	NZ 1862-1994 used colln in 3 Seven Seas albums, all stamps in mounts. Noted 5 FFQs (mixed cond); 1898 Picts (2/- fiscal, 5/- dubious cancel), EVII incl Officials sets; Victory set; 1931-5 Airs; then Defins & Commems virtually complete (no 2d QEII stars), some m/s only.	\$425
121	M*	NZ 1864-1980s mint colln in Premier album. Noted: 3d 1906 Christchurch Exbn, 1/- Victory, 2/- Admiral & Admiral Official (latter toned); 1931 Airmails etc. 1d Life Insurance no VR blue, mint but heavy toning. High cv.	\$1,200
122	U	NZ 1873-1977 used colln in 2 binders. Virtually complete Defins, Commems & Life Ins on simplified basis. Noted particularly FSF set 2/- VFU, also 5/- VFU but closed tear; 1898 Picts set; 1907 Officials Picts; Chch Exbn set (CTO); ½d, 1d, 3d Auckland Exbn (no 6d) etc; Health complete (no m/s, Red & Blue Boys slight tone); 1891-1913 Life Ins sets; also 5d, 6d, 1/- Dues. Good CV.	\$2,000
123	M*	NZ 1873-1975 mint/MUH simplified colln in s/b. Noted 2/- FSF mint & 5/- MNG; 5/- Mt Cook & official mint; Christchurch & Auckland Exbn sets mint & thence a useful range. No 2d QEII stars error ovpt or Health m/ss. Some variable cond.	\$1,200
124	U	NZ 1873-1976 simplified used colln in s/b. Noted: 5/- FSF (courts) fiscal cancel; 5/- Mt Cook fiscal & official GU/FU; 3d & 6d Christchurch Exbn, dubious cto cancels; Auckland Exbn (no ½d) GU/FU. No 2d QEII stars ovpt error or Health m/s. Various with parcel canc. Mixed cond.	\$1,000
125	/	NZ 1873-1975 virtually all mint (some mostly earlies used) on pages, all stamps in mounts. Noted 1898 Picts mix mint & used (2/- & 5/- fiscal); EVII sets incl Officials (mix mint/used/fiscal); Victory & Dunedin sets; 1931-5 Airs, then Defins & Commems mostly complete (no 2d QEII stars) MUH from c1967.	\$400
126	/	NZ 1873-1933 variable colln incl FSF 2/- FU, SSF 2½d to 1/- (40+), 1898s 6d green Kiwi x 2 mint (toning) & 2 used, 3d x 2, 5d x 3, 6d x 2 & 8d x 2 mint; 2/- (toning) mint, 6d reduced x 2 mint, 1d Dom booklet pane with selvage (no bars) mint/MUH. GV various recess mint/MUH blocks.	\$1,000
127	/	NZ 1874-1980s largely MUH colln. Incl (MUH): SSF 2½d, 3d, 5d, 8d; 1898 2d, 2½d Wakatipu 3d, 4d, 8d, 9d 1/-, 1/- Official; 6d Kiwi red; 1st Express Delivery (2); Edwards complete (some gum yellowing); Auckland 1913 set (3d gum spot) GV complete, Healths (excl Red & Blue Boy) & 9d Official green etc.	\$2,750
128	R	NZ 1880s-1960s misc accum. 1939 SSF adverts x 35 (incl 6 green); Fiscals: 1935 Fine Paid 2d & 2/- unpunched, 18 x Railway Newspaper; 13 x Railway Charges; QVLT £300 unpunched; 1934 10d Unemployment Relief etc. Various cinderellas.	\$500
129		NZ c1880s-1915 colln presentation cancels on 3 pages, 2 diagonal lines lower right corner each stamp (no gum), ½d to 6d SSF (5 vals): 1898 Pictorials (London prints) 1d to 2/- (10); c1899 Picts p11 1d to 2/- (9); c1900 p14 later Picts ½d to 4d (4); EVII set of 10; 1½d & 3d GV recess. (Total 40).	\$1,000
130	/	NZ small group of varieties etc: SSF 4d & 1/- unused no gum, 1 perf fractionally short on 4d; EVII 3d 2 perf pair (a little toning on gum side); EVII 3d Official p14 x 13½ used; GV 8d Official FU/VFU; GV 2d surface, Wiggins Teape p14 x 15, wmk 2 invtd, used x 2; 6d Express Delivery, Cowan, p14 x 14½, wmk invtd, used. CP Cat \$3000+.	\$1,000
131	/	NZ c1890s-1990s haphazardly arranged colln in large s/b. Noted 1898 5/- Mt Cook mint, 1½d Boer War MUH, 6d Kiwi Lisbon Superfine paper, fiscally used, 6d reduced muh, 1935 picts seln including 3/- inverted & reversed wmk L/H mint (cat \$900), numerous later issues, plate blocks/multiples etc MUH/cto. Some variable condition.	\$1,120
132	/	NZ 1898-1966 simplified pre-decimal mint colln of approx 300 (MUH from c1943) in s/b. Noted 1898s to 2/- (& some extras), 1906 Christchurch Exbn to 3d, EVII & GV sets. Thereafter almost complete incl Health. Officials from GVI only (incl 1940 Centennial set MUH). ACS cat \$6000+. Also rather random used range (approx 200) at back (same period), not nearly as complete.	\$1,500

133	M*	NZ 1906-46 Commems & Airs colln: 1906 set mint; 1913 ½d & 1d used; 1920 Victory mint/MUH (3 x 6d, gum on 1/- a little toned); 1925 Dunedin Exbn mint (gum toning on 4d); 1931-35 Airs mint; 1940 Centennial mint/MUH (1/- MUH, some others gum toning); 1940 Centennial Officials mint/MUH.	\$750
134	/	NZ 1915-33 extensive & neat defin colln mint & used. Mint (some muh) nearly complete incl 2 perf pairs & sideways wmk & several no stop after 'Official' varieties. No 2/- or 3/-. Used incl some scarcer FU/VFU undated pmks & 6d sideways wmk with 1934 pmk. Officials incl 8d, 2 x 2/- & no stop after 'Official' & other varieties incl no stop 3d p14. Useful range of booklet pairs & block of 4. Some toning on reverse.	\$2,500
135	/	NZ 1920-90s seln on 4 stockpages: incl 1920 1/- Victory imperf (blue) SPECIMEN & also imperf single: 1925 Dunedin Exbn set with Exbn cancels; Admirals: 2/- x 9 GU/FU, 3/- mint & used, 2/- Official x 5 GU/FU; 2d QEII stars ovpt error x 4 mint & 4 (used) forgeries; 1960 3/- to \$2 multi high vals x 63 (mint/MUH/used); King EVII Land blk of 4 FU, 1d Victoria Land blk of 4 MUH, ½d forgery. Also ½d MNG & 1d mint. [164v]. Variable condition throughout. Cat \$6500+.	\$1,200
136	/	NZ 1935-42 extensive neat colln of 1935 Pictorials in 2 albums muh/mint/used. Scarcest items mostly absent but in depth coverage with plate blocks well represented. Noted mint/muh: 2d plate blocks 2A to 5B; 2d selvedge block (5 x 2) ex plate 5B showing striking plate crack R1/9-11; pair 4d multi wmk p14 line; 5d p13½ x 14 plate block plate I muh (2 tiny hints of toning); 9d p14 x 14½ selvedge block MUH 2 grey lines; 2d Official p12½ muh etc. Also some plate flaws. Very high cv. c500 stamps	\$2,500
137	/	NZ c1936-2000 accum/colln in 4 albums & bundle of misc. Best component probably album Whangarei pmks with list - well over 100, another album NZ wide again with list several hundreds. Rest of colln has an eye for pmks.	\$400
138	/	NZ 1953-76 nearly all mint/MUH colln in binder on Seven Seas hingeless pages. Virtually complete. No 2d QEII stars or some Health m/s. A few items eg 2/6d-10/- QEII FU. All appear MUH from c mid 1950s. Pages to 1990.	\$350
139	*	NZ 1953-70s 3 stockbooks with huge accum of plate blocks, coil pairs, value blocks etc for defin & commems. Incl better, eg plate blocks of 3 printings of 1970 50c defin. Few thousand (maybe a few mint). Huge cat.	\$1,750
140	/	NZ 1998-c2007 Alternative Postal Service Providers' issues colln muh/used & some booklets on 50+ Hagners (some double sided). Useful range.	\$280
141	U	Norway 1856-2009 used colln in 2 Davo standard albums - pages complete (from 1855). Missing key early items, virtually complete c1942 to early 2000's, then patchy. Also missing many m/s's. Plus some extra pages - presumably duplicates, with a few mint.	\$650
142	/	Pacific 1880s-1980s x 9 dealers stockbooks, many thousands, Christmas Isl, Cocos, Fiji, Gilberts, Nauru, Norfolk, Solomons, Tokelau, Tonga. Some useful material in Gilberts, Norfolk & Solomons. Mint, used, some MUH. Stated to retail \$15,000+.	\$2,000
143	/	Pacific Isl, mainly Fiji & Tonga in album & 2 s/b. Noted: Fiji GV 5/- wmk mult crown VFU; 1918 3d & 4d Dues used. Tonga: 1897 10d small second "O" used (SG 49c), 2/6d & 5/- wmk upright used, 1942 1d script wmk 'lopped branch' mint; many Salote (1920 design) mint & used. Later incl 1962 1/- with invtd ovpt on FDC with others.	\$800
144	/	PNG 1900s-80s x 5 dealers stockbooks. Some useful 1930s Bird of Paradise mint & used. Much dupn for later Papua & for PNG. MUH, mint & used. 5,000 stamps. Stated to retail over \$5,000.	\$750
145	/	Pitcairn Isl 1940-80s extensive dealers stock, incl: GVI 4d x 6, 8d x 4 & 2/6d x 2 MUH (2/6d x 6 mint), 48 Silver Wedding mint/used etc. Many sets. Over 2000 stamps.	\$1,000
146	/	Pitcairn Isl 1996-2011 virtually complete colln mint & cto (incl m/s). Also some earlier QEII issues mint 1966-77. Attractive designs. SG cat £2600.	\$700
147	/	Poland 1915-1960 mint/used colln incl 1919 Polish Post Office in Turkey set (12v) mint (£960); Danzig (£150) & various regional Przedborz to WWII etc (£1000+) SG cat £2100+.	\$600
148	/	Ruanda Urundi 1916-61 colln on pre-printed pages complete except no 1916 "Ruanda" & "Urundi" ovpt sets. 1916 ovpt set FU, rest mint, mostly MUH. Cat £780.	\$350
149	/	Russia 1863-82 Tsar Alexander II Arms types accum incl 4 x St Petersburg town post. c150 x 1k & 2k, 80 x 3k & 5k, 170 x 7k & 8k; 50 x 10k (1st type), 10 x 20k (1st type), 12 x 10k & 20k (2nd type). Used. SG c£2250+.	\$500
150	/	Russia c1880s-1945 various regional areas (Ukraine, Armenia, Russian POs in The Levant) etc. Noted a few Zemstros (6v) on rather scrappy pages in binder. Mint/used.	\$325
151	/	Russia c1900-1940s various Civil War issues; POs in China; POs in Turkish Empire incl FU (SG 203) 100 Piastres/10R (£650), Armenia- Ukraine etc. SG cat £1000+.	\$600

152	M*	Samoa c1880s-2017 mostly mint/MUH collns in 2 albums & s/b. Noted 1920 Victory set VFU. Virtually complete from 1935 & mint from about 1970s. The very modern era not easy to find. Several thousands.	\$500
153	U	Scandinavia used collns in Davo standard albums: Denmark 1854-2008; Finland 1875-2009 (2 albums); Norway 1856-1990s (pages to 2006); Sweden 1858-2008 (2 albums), all pages complete but missing key items & rather patchy on latest issues with many m/s's missing. Nice lot for continuation. Very good CV plus value in albums.	\$850
154	C	Scandinavia 1880s-1960s interesting colln of Finland & of Scandinavian local posts. Finland incl 1919 Aunus Occupation short set to 1m mint; N Ingermaland both sets (some thins) mint; Kareua 1922 set of 13 mint (cat £450); over 200 local posts, Denmark, Sweden etc incl some not seen on E-Bay or Delcampe, several sets of Lunds stamps MUH & 13 covers Uppsala; Vasteras.	\$1,000
155	/	South Africa 1910-68 specialised mint & used on pgs identified by SG No's. Noted used 1913 GV set with extra shades, 1935 Airs (& mint); 50+ bilingual pairs (many vert) etc. Mint: 90+ bilingual pairs (nearly all horiz). Good cv, generally good cond.	\$1,250
156	/	St Helena 1856-1953 mint & used colln on pgs identified by SG No's. Noted used: SG 1 x 2, 2a, plus 34 other QV engraved; 1908 10/- EVII (FU on piece); 1922 GV badge various values to 5/- . Mint: 14 QV engraved; 1890 QV set of 7; 1903 EVII Govt House set; 1912 GV Govt House set; 1927 GV badge sets (of 5 & 15 both wmk, no 15/-); 1934 Centenary set; 1938 GVI Picts set. Good cv.	\$2,000
157	/	Sudan 1897-1954 mint & used colln on pgs identified by SG No's. Noted mint sets: 1897 x 2 (5p 1 only, toning on 5p & 10p x 1), 1898, 1902, 1921 (2m both shades), 1927, 1931 (both perfs), 1935 General Gordon, 1931, 1941, 1948, 1951; 1936 & 1948 Officials etc. Similar used missing a few high vals (eg: no 20p, 50p General Gordon).	\$1,250
158	/	Sweden c1850s-2011 mint/used colln in 4 albums & small bundle Hagners. Generally good coverage but no key earlies & very modern sparse, incl many envelopes, commercial mail, maxi cards & FDCs, booklet panes, m/s etc. Probably about 2500 stamps & 125 covers. Interesting lot.	\$650
159	/	Switzerland 1907-82 virtually all used picked over colln in Davo standard album (pages from 1905), about 850 stamps. Some useful items remain, eg: earlier Pro Juventute sets etc. STC £2300.	\$650
160	/	Switzerland 1939-60s dealer's accum on s/b. Mainly used. Noted 1941 5F Air used, 1960 Pro Patria m/s MUH, useful Pro Juventute, League of Nations LN22 (not 22A) x 4, LN30, LN 37 (used). Some 2,000 stamps.	\$1,000
161	/	Tasmania 1850s-1912 small colln, c30 diff Chalons mint & used, 1856 entire franked 4d to Sydney, 60+ later incl 5/- used & 10/- mint (1 toned perf) & used.	\$400
162	/	Tasmania 1855-1912 colln of many hundreds, almost all used, with considerable dupn, in s/b. Many higher cv items noted in fine cond. Noted 1855 2d deep green imperf SG 15 (cat £550). SG 17, 18, 25-39 (many), 40 (4), 41 (11), 44-49 (many, incl SG 49 with cert), 57-68 (many), 70-77 (many), 90, 118, 120 130-141, Chalon "REPRINT" blocks of 4 MUH (2d, 4d, 6d, 1/-), 1870-92 small QV good range (incl some mint), 1899-1912 Pictorials (incl 2 mint sets). Some items with purchase details (ex major auctions). STC £11000+ (excl many items with manuscript cancels). Ex Lovis.	\$3,000
163	M*	Thematics - Air 1920s-90s x 3 dealers stockbooks. Mint & used. Around 1500 stamps incl m/s. Varied Bulgaria 1974 & Russia 1938 Aviation sets noted. Stated to retail \$3800.	\$750
164	/	Thematics - Birds & other Fauna c1900s-90s colln in springback album & loose in bag, arranged by country. Noted mint sets: Bechuanaland 1961; Gambia 1938 Elephants; Mauritius 1965 Birds; Malawi 1975 Birds; Newfoundland 1919 Caribou (mix mint & used); Singapore 1962. Several thousands.	\$500
165	/	Thematics - Birds 1950s-90s x 4 dealers stockbooks, very varied, no repetition. Around 2000 stamps incl some better sets & m/s. MUH, few mint & used. Stated to retail over \$7000.	\$1,500
166	/	Thematics - Fish & Shellfish 1960s-90s x 3 colourful dealers stockbooks. Mainly MUH. Very varied, no dupn. Over 1500 stamps incl many m/s. Stated to retail \$4000.	\$800
167	/	Thematics - Flowers x 4 dealers stockbooks, colourful & varies, mainly MUH. Some better sets, c2000 stamps incl m/s. Stated to retail \$5000.	\$1,000
168	/	Thematics - Military 1900s-90s x 2 dealers stockbooks, varied, no dupn. Mainly MUH, some mint & used. 800+ stamps incl m/s. Stated to retail \$2000.	\$400
169	/	Thematics - Railways 1890s-1990s x 3 dealers stockbooks, some better sets noted: Bulgaria 39, Hungary 46, Russia 48, Grenadines m/s etc. MUH, mint & used, some 1500 stamps. Stated to retail \$3700.	\$1,250
170	/	Thematics - Ships 1890s-1990s x 2 dealers stockbooks, varied & wide ranging. Grenada 1898 2½d mint & Bahamas 2/- & 3/- 1932 Seal mint noted. Mainly MUH, some mint or used, 800 stamps incl m/s. Stated to retail \$2,500.	\$500
171	/	Thematics - Sport 1950s-90s x 2 dealers stockbooks, very varied with some better noted, eg. S Arabia 1966 Football ovpts MUH. Over 1000 stamps. MUH, some used or mint. Stated to retail over \$2200.	\$400

172	/	Tonga 1886-1964 mint & used colln on pgs, good range incl 46 George I, 1897 Picts set FU; 1923 2d Surcharge set (no 2d on 1/-) mint; 1942 Picts set mint etc. About 200 stamps.	\$500
173	C/	United Nations 1955-c2007 colln New York, Geneva, Vienna, each in a blue album. Also Kosovo, Timor L'Este numerous prestige booklets, complete series of member country flags in 49 sheetlets = 196 countries each in blk of 4 & UN postal stationery, approx 150 items, appear mint. Also Scott Speciality album: UN, Cuba, Philippines & Canal Zone, mint/used (6 albums).	\$1,200
174	/	USA 1847-1970s colln in Scott album. Scott 1 5c red brown 4 margins, touches at one point, hinge thin. Scattered earlies 1c & 3c 1869 set etc. Reasonable coverage 1930s on, c1000 stamps. Mint/MUH/used.	\$500
175	/	USA 1850s-1980s in 2 Scott albums. Scattered earlies incl VFU 1861 10c, GU 1890 90c, FU 1871 7c, 1893 Columbus GU 30c & \$1 (latter very heavy pmk), 1894 GU \$1 type 1, 1898 Mississippi GU 50c. Good coverage later. Mint/Used.	\$1,000
176	/	USA 1880s-1973 mint/MUH/used colln in 2 albums: 1) defins etc (sparse pre 1925, but incl various coils & pre-cancels); 2) Commems - key items absent but noted Omaha 1c, 2c mint & 10c 1901 Exbn mint, Airs from 1926. Good value at estimate. Cat £750+.	\$500
177	/	USA c1920-1990s colln in 3 s/books: 1) booklet panes, annotated as per Scott; 2) c1960+ defins, coils, precancels (singles/strips), Officials & computer generated stamps; 3) a general USA colln with Farley's range of earlies to 1920 (no 1893 Columbians) cat US\$1380, mint sheets etc 1990s Olympics (US\$2100); 50c Zeppelin in plate blk of 4 MUH, & misc Airs/Postage Dues etc. Some mixed cond especially in album 3. STC Scott US\$4400.	\$1,200
178	/	Vatican City 1929-2008 colln, appears complete on 245 pages mostly mint/MUH though some earlies (eg 1934 surcharges) are used. Some covers also present. Cat £5500 to circa 1967.	\$1,500
179	/	World c1850s-1930s seln 71 stamps on 2 Hagners. Better items NZ: 1/- Postage Due used, 3d Huia's block of 4 with "S & s/w" perfins used, 6d Express Fernleaves vert pair; 2/6d, 5/- £1 x 2 QVLT Rarotonga ovpts mint; Germany 1872 9k chestnut embossed Eagle, o/c paper, hinge mint (SG 27 cat £750); Cape of Good Hope x 2 triangulars; Barbados 4d Britannia specimen, etc etc. Mixed cond but huge cv. Photocopy/scan of lot available. Offered 'as is'.	\$1,100
180	/	World c1860s-2000s collns in 3 albums: Strand world colln, noted USA 50c Omaha used, GV 2/- QV blue used & misc revenue; s/b, noted seln NZ 1d Universals Cook Isl & FID; Hobby s/b - mostly NZ Healths from 1935 (approx \$100 fv). Variable cond. Mint/MUH/Used.	\$500
181	/	World c1870s-1940s colln in grand old (but dilapidated) "The Ideal" Album (pub c1910), picked over & sparse in places but still probably about 5000 stamps. May well be concealing a few good items. Worth inspection.	\$300
182	C	WWI 1914-19 postal history accum - few slightly later. Mainly military covers: c40 covers to/from NZ, 3 Australia; 50+ GB, 50+ Germany & Austria, 11 USA (incl 2 from US occupation of Vera Cruz); 50+ other countries; c30 unused WWI Theme postcards. Many in original Mowbray auction lot packaging. Various lists, clippings etc. Unsorted c250 items. Very varied.	\$1,600
183		WWI Internment Camps - 1) Netherlands Skampen Internment Camp: letter from camp 7.11.16 to leige franked with green Stampen stamp. Also one mint stamp of similar design in brown. 2) Zeist Camp p/c (picture of camp). On obverse message in French addressed to NY, h/s "Franc de Port Internes" canc Zeist 30.XI.17 ordinary censor mark. 3) Ruhleben (Berlin) camp for British civilians. Mint Ruhleben 1/3d local post PC (service ran July 15 to April 16) & 14 diff Ruhleben p/cs mint & used other p/cs. All are scarce!	\$1,000

COLLECTABLES

184		Autographs - c1930s-60s x 3 autograph books/misc actress photos/letter clippings from famous people, eg: Gracie Fields (on 2/6d banknote!), Mickey Rooney, Moira Shearer, Sid Field, Anna Neagle, Jimmy Edwards, Anthony Eden, Pam Ayers, Denis Compton & 1948 Egyptian Olympic swimmers etc!	\$1,000
185	C	Autographs - 1936 cover with signature Jean Batten. Batten flew UK to NZ Oct 1935. Exhausted, her publicity tour was cancelled & she stayed in Franz Josef during November. The cover commemorates her election as Honorary member of Air Mail Society of NZ, canc Nov 1936 (some foxing). Whilst later Batten signatures are readily available, we have been unable to trace any other from this period. Also card album of fabric from R100 airship.	\$500
186	C	Autographs - bundle of 21 photos, covers etc. Politicians etc, mostly Europe 1970s.	\$750

NEW ZEALAND - POSTAL HISTORY

187	U	Numeral x 9 diff on 1d orange FFQ SG 8. No's 1 (Auckland), 7 (Wellington), 9 (New Plymouth), 10 (Wellington), 11 (Ahuriri), 15 (Nelson), 16 (Port Victoria), 17 (Christchurch) and 18 (Dunedin), variable cond. Stamps cat £6750.	\$2,500
-----	---	---	---------

188	C	1859 cover to England with horiz strip of 3 2d pale blue FFQ (SG 9) via Suez & Southampton correct rate for an item not exceeding ½ ounce. Dated Auckland MY 07 1859; Halifax receiving pmk AU 09 1859; the route is by the "Columbian" from Sydney (14 May) or Melbourne (19 May) to Suez, connecting with the "Ripon" leaving Alexandria 22 July, arriving Southampton 06 August 1859.	\$500
189	U	1860 Top left corner of newspaper "British ..., A Monthly Journal Devoted to the Diffusion of Scriptural ..." No 86 April 2 1860 bearing an imperf (4 margins) 1d dull orange FFQ (SG 8) with barred cancel "18" (Otago) on face, barely tied. Stamp with light diagonal crease. Also bears a despatch cds "Otago JY 23 1860" & a handwritten destination "Ottepopo" (sic).	\$1,500
190	C	1862 cover Lyttelton to Holywell "via Marseilles" with 1/- deep green imperf (3 margins, LH selvedge, 4th damaged), Pelure paper, barely tied by a "16" obliterator (Lyttelton). Holywell cds (FE 12 63) on front & Lyttelton (DE 13 1862) on reverse. Cover travelled on "Northam" to Suez, then by "Vectis" to London. Cover aged.	\$1,000
191	C	1862 Colombo wreck cover, Auckland to GB "via Marseille" bearing a single 1d (red, oxidised to brown) rouletted 7 on 3 sides (SG 47). Other stamps missing. Saved from the wreck of the Colombo cachet on reverse along with an Auckland "SP 1862" cds. Cover 'worn' as expected.	\$1,000
192	C	1863 Waitahuna, NZ to Edinburgh cover with 1d, 2d, 6d black-brown, p13 FU (SG68, 70, 75) unbox "DEFICIENT POSTAGE FINE", "MORE TO PAY" circular cachet. Pmk "O16" cancellations of Waitahuna. "Goldfield A Otago" b/s, Dunedin Otago AU 15 63 transit, '4 Y Edinburgh OC 15 63' arrival b/s. Ex Benvie.	\$5,000
193	C	1864 Auckland, NZ to Sydney, Australia, NZ Maori Wars era, 6d red-brown imperf (SG 43). (Correct 6d rate for officer) with indistinct 'Queens Redoubt' pmk, unframed Auckland JY 13 1864 b/s, double circled New Zealand JY 13 1864 d/s. "SHIP LETTER SYDNEY AU 1 1864" arrival b/s. Sender was quartermaster Robert Laver of the 12th Regiment of Foot (East Suffolk).	\$1,500
194	C	1865 cover Wanganui to Galway, Ireland with 1/- imperf (3 margins, 4th just touching) & 6d p12½, the 1/- tied by light barred cancel. "Registered 402" in red has been written vertically on the front & cover has been rated "2" in red. Wanganui, Wellington (AU 5 1865) & Galway (OC 23 65) cds on the much torn reverse. Cover has horiz fold. Ex "Emerald", Benvie.	\$2,500
195	C	1865 cover Auckland to Middlesex with 2 x 6d red-brown (imperf, both 3 margins) tied by barred "1" duplex Auckland cancel (AP 24 65). Red London receiving h/s dated JY 1 65. Travelled on "Bombay" to Aden, then on the "Candida" to Southampton.	\$1,500
196	C	1865 Auckland to Hull, England cover with 2d blue x 2, 6d brown pmk "1" of Auckland & red "LONDON PAID". B/s "Auckland JA ?? 65, Hull MR 15 65".	\$750
197	C	1867 worn cover to Campbelltown with 3 x 1d carmine-vermilion (SG 110). Indistinct number cancel, redirected to Nelson. "PORT CHALMERS NO 18 67", "WELLINGTON NO 22 67", "N. PLYMOUTH 10 26 1867", NELSON DE 5 1867" b/s. Ex Jury.	\$500
198	C	1870 Thames to Auckland with 2d blue (SG 115). Pmk "H NZ THAMES JY 15 70 A3" duplex cancel. "AUCKLAND JY 16" and Onehunga JY 16 b/s. Earliest example of duplex d/s to be used outside of a provincial post office.	\$500
199	C	1872 Mourning cover to NSW with 1d brown & 2d orange (both p12½). Auckland JY 23 72 duplex cancel, b/s Sydney AU 13 72.	\$250
200	C	1872 Dunedin to Nelson cover with 2 x 2d orange, FU. Dunedin SE 20 72 duplex pmk. B/s Nelson SE 29 72.	\$250
201	C	1872 envelope from Ohinitahi with 2d orange FFQ tied by local obliterator, b/s Ohinitahi unframed SE 7 cds, Lyttelton SE 9 72 & Wellington SE 10 72 cdss. Endorsed T Potts 7 SEP 1872. Now the latest recorded use of the Ohinitahi cds. Note: Mr Stafford became NZ Premier for the third time on 10 Sept 1872.	\$500
202	C	1873 8d Post rate (valid 5 days) cover Timaru to Malvern with 2d orange, 6d blue pmk "5" of Timaru. Adhesive faults. B/s Christchurch 28/5/73, Malvern 13/8/73. This is the only recorded cover at this rate (Benvie NZ Stamp Collector June 2004). Also copies of Post Office rate notice & correction 5 days rated. Ex Benvie.	\$7,500
203	C	Two PAID ALL covers to North America, 1/- 1873 Greymouth to Canada West via Nelson, Adare & Lucan (Ontario) with appropriate b/s, NZ stamp(s) removed by the Post Office, the PAID ALL marking in red crossed through & US stamps applied over it. 1878 to Boston franked FSF 6d with good New Plymouth cds MY 25 & weak boxed "PAID ALL" (2 covers).	\$300
204	C	c1890 ½d Newspaper stamped covers (11): Noted solo use on 1893 commercial cover to USA & 1892 solo use on 1892 cover to England. Also incl 1894 ½d postal stationery newspaper wrapper "Unclaimed" in red m/s. (12 items). Variable cond.	\$240

205	C	Southern North Island 1897-1907 registered covers (11) with range of boxed regn cachets in purple or red for Dannevirke, Eltham (only recorded), Featherston (earliest recorded), Greytown North, Levin (the earlier of the 2 recorded), Mangaweka (latest date), Martinborough, Marton (in red - previously unrecorded), Patea, Petone, Wellington South. All but one Tatts cover to Tasmania with spike holes.	\$600
206	C	1935 Royal Train Visit of HRH Duke of Gloucester. 1d Admiral on cover canc Royal Train New Zealand 14 JA 35 7 AM & addressed to Napier 14 Jan said to be last day of HRH's visit to NZ. Adhesive remnants on front edges. Also article from "Stamp News" on similar item.	\$750
207	U	Wairoa m/s fine cancel on FFQ 6d red-brown, p12½, NZ wmk (SG 108), (believed to be Napier rather than Auckland district) with light obliterator ("11" of Ahuriri) applied also.	\$200

NEW ZEALAND - POSTAL STATIONERY

208	C	1893 OPSO PASD "Printed Matter Only" parcel label to Agent-General for New Zealand in London, bearing 1 July 1893 Wellington "A" class cancel & double. Ringed purple circular h/s reading "NEW ZEALAND. OFFICIAL PAID" at upper left.	\$280
209	M	1899 ½d Mt Cook, 1d Terraces on foolscap envelopes unused. Small fault on 1d. Scarce. Samuel CA1b, CA2a.	\$250

NEW ZEALAND - DEFINITIVES

Full Face Queens Collections

210	U	Imperf used colln/accum on 13 Hagner/stock book pages - 1d x 38 (noted SG 4 x 2, SG 8 x 18); 2d x 129 (noted SG 2 x 2, SG 5 x 9, SG 37 x 3, SG 82/3 x 4; 3d x 41 (about 25 are accidental imperfs); 6d x 108 (noted SG 15 x 2); 1/- x 44 (noted SG 3 x 2 faults, SG 6, SG 16 x 3, 17 x 2). Mostly Davies prints. Mixed cond, nearly all noted items have faults). High cv. 360 stamps.	\$12,000
211	U	Imperf used range of 20 earlies (mostly no wmk) on Hagner page. Noted 2d SG 2 FU 4 margins (corner back thin); 2d SG 5 pair FU, 4 margins but horiz crease; 1d SG 8 x 2 (small back thins); 2d SG 9 fine 4 margins VFU; 6d SG 13 x 3; SG 14 x 3, SG 15 (chestnut) x 2 FU & 1 GU with small faults; 1/- SG 16 x 2; 1/- SG 17 x 3 (all 1/- with small faults). Good appearance overall & many 4 margins. SG cat £15000+.	\$3,000
212	U	Used colln on pgs identified by SG No's. Good range but very mixed cond. Incl imperfs: 1d x 9; 2d x 11; 3d x 2; 6d x 13 & 1/- x 12. Perf: 1d red x 8, 1d brown x 6; 2d blue x 8; 2d orange x 9; 3d x 6; 4d rose x 3; 4d yellow x 6; 6d brown x 8; 6d blue x 6 & 1/- x 4. Better SG No's incl 2, 4, 5, 6, 8 (x 3), 17, 40 (x 2), 119 (x 3) & 141. High cv.	\$2,500
213	U	FFQ used colln on 11 pages, condition varies but noted SG 2 (tear) 4, 5 incl 4 perf issues on covers (74 stamps plus 4 covers). Used.	\$1,750
214	/	31 Imperf, 46 perf (incl 1 mint) colln on pages, noted SG 5, 8, 9 x 3, 12, 15, 33-5 x 3, 46, 49, 76, 77, 111 (mint), 118a (single), 119, 120 etc. High cv but most with faults & varying margins on imperfs. Mint & used.	\$1,500
215	U	Selection of 7 imperf & 2 perfs GU/FU: 2d SG5 (4 margins); SG9 attractive light cancel, huge basal margin, crease; SG36 almost 4 margins; 6d SG41 small thin (4 margins); SG85 Pelure paper (4 margins, just); 1d SG35 (4 margins); 1/- SG 45 (4 margins & appears rebacked); 2d SG113 & 1d SG128. SG cat £1315 (excluding 1/-).	\$400
216	M	Imperf range of 12 on 2 stockcards. Attractive 3-4 margin examples. Incl 2d SG 9 (corner back thin); 1d SG 33 (repaired corner); SG 34 x 2 shades; SG 35 x 2 shades; 2d sG 36, 39; 3d SG 40 x 2 shades; 6d SG 43; 1/- SG 46 (corner back thin). Odd minor faults. SG cat £11800. Mint or unused.	\$3,000
217	U	Imperf star wmk, range of 32 used (almost all FU 3 or 4 margins) on Hagner page. Incl 1d x 2, 2d x 2, 3d x 4, 6d black-brown x 9, 6d brown x 3, 6d red-brown x 6, 1/- x 6. A few faulty are noted. SG 33-45 range. Cat £5775.	\$2,750
218	U	Perf range of 57 used on 2 Hagner pages incl better items. Noted 1/- p13 SG 79 GU (small back thin), 3d brown-lilac SG 116 GU, 3d lilac SG 117 x 25 (many shades), 3d deep mauve SG 117 x 9, 4d rose SG 119 FU x 1, GU x 1 & FU x 2 with faults, 4d yellow SG 120 FU, 1/- SG 124-5 FU. Most are sound. SG cat approx £4000.	\$1,500
219	M	Perf range of 10 on stockcard incl: 1d carmine-vermilion SG 110; 3d lilac SG 117 x 3 shades, ditto partial imperf; 2d vermilion SG 138; 6d pale blue SG 136 x 3 (shades); 4d orange-yellow SG 139. Sound. SG cat approx £2100. Mint or unused.	\$1,300

SEE THIS CATALOGUE ONLINE AT WWW.MOWBRAYCOLLECTABLES.COM

220	/	3d lilac, star wmk (normally p12½). Accum of imperf provisional singles on stockcard: 1 unused & 15 used (GU to FU), various shades. Most have 4 good margins & several are exceptional. Also 3d deep mauve & 7 similar imperf, 4 margins, used. SG 117a, 188a (cat only as pairs). CP A3d(T) cat \$3000 (mint) & \$1250 (used) each as singles. CP cat approx \$30000 as fine. (22). Ex Lovis.	\$2,750
221	U	Imperfs: 1d red; 1d vermilion; 2d blue; 3d; 6d black-brown; 6d red-brown & 11 green - GU/FU. Variable margins. Also simplified perf set (11v) GU/FU. (4d rose AUCKLAND/MY29/66 cds). Jury cat \$2900.	\$600
222	M	Perfs: 1d vermilion x 2, 1d brown, 2d blue, 2d orange, 3d lilac, 4d yellow, 6d brown, 6d blue, 1/- yellow-green (10v). Mint/MNG. Some variable cond. Jury cat \$4600.	\$600

223	U	Extensive perf used colln/accum on 27 Hagner/stock book pages: 1d red/orange x 70; 1d brown x 76; 2d blue x 185; 2d orange x 122; 3d x 109; 4d rose x 25; 4d yellow x 125; 6d brown x 138; 6d blue x 89 & 1/- x 75. Nearly all Davies prints but wide range of shades, many retouches (on 2ds), varying plate wear etc and a few interesting pmks. Over 1000 stamps! Cat Simpl \$125000++.	\$16,000
-----	---	--	----------

224	M	Mint/MNG perf seln of 20v on stock page: 1d brown x 3; 1d orange; 1d red; 2d blue & 2d orange x 3 each; 3d; 4d rose x 2 (one with cleaned m/s "K", other with small surface scuff); 4d yellow x 2; 6d red-brown; 6d blue, 6d black-brown & 1/-. Some variable cond.	\$2,800
-----	---	---	---------

225	M	Mint/MNG perf colln on stock page: 1d brown x 16, 1d orange x 18; 2d blue x 20; 2d orange x 14, 3d x 12; 4d yellow x 9, 6d blue x 8; 6d brown x 5 & 1/- x 7. 109v, with good range of shades. Mixed cond.	\$4,000
-----	---	---	---------

226	U	Selection of 33 perforate multiples on stock page: 1d brown x 3 pairs; 1d orange x 6 pairs; 2d blue x 6 pairs + vert strip of 3; 2d orange x 1 pair + 1 horiz strip of 3; 3d x 4 pairs; 4d yellow x 1 pair + 1 horiz strip of 4; 6d brown x 4 pairs + 1 vert pair + block of 4 & 1/- x 3 pairs. (72v). Mixed cond. GU/FU.	\$2,800
-----	---	---	---------

Full Face Queens

227	U	1855 1d dull carmine, London print, 3 imperf margins, just touches 4th. "1" pmk most attractive, 1960 BPA cert. SG1. cat £20000. FU.	\$20,000
-----	---	--	----------

228	U	1855 1d dull carmine, London print imperf 4 margins, virtually complete barred "2" cancel (Russell). Lower margin partially repaired & painted in & small defect around "D" of "ZEALAND". Holcombe cert (1997). SG 1. Cat £20000. FU. (Reserve \$8,500 plus buyers premium).	\$10,000
-----	---	--	----------

229	U	1855 1d dull carmine, London print - part "Cancelled" corner cancel presentation stamp, one of 6 examples given by Perkin Bacon to Rowland Hill's family. Imperf, 3 margins, just touches on 4th at base. Very small back thin. Superb colour. RPSNZ cert (2000). Ex Beresford. Note: image not available for Peter Jaffe's "Cancelled by Perkins Bacon" publ (1998). Last offered by Mowbrays 2000. CP A1ax cat \$75000. SG 1a Cat £32,000.	\$30,000
-----	---	--	----------

230	U	1855 2d dull blue on blued paper, London print, imperf 4 margins (close 1 side). Most attractive. SG 2. Cat £650. FU.	\$500
-----	---	---	-------

231	U	1855 2d dull blue on blued paper, London print, imperf 3 margins. SG 2. Cat £650. FU.	\$350
-----	---	---	-------

232	U	1855 2d dull blue on blued paper, London print, 4 margins touches 1 corner. SG 2. Cat £650.	\$400
-----	---	---	-------

233	U	1855 2d dull blue on blued paper, London print, horiz strip of 3 (R18/nos 8-10), imperf full margins except at right & top on 2 RH stamps, close LH stamp at bottom, star wmk, vert crease RH stamp. Light indistinct barred numeral cancels. SG 2. Cat £1950. Ex Dumas.	\$1,000
-----	---	--	---------

234	U	1855 1/- pale yellow-green on blued paper, London print, 4 margins, 1 close, 3 small thins. RPSNZ cert 1989. SG 3. Cat £5500. FU.	\$1,500
-----	---	---	---------

235	U	1855 1/- pale yellow-green on blued paper, London print, imperf 4 close margins, touches 1 corner. SG 3. Cat £5500. FU.	\$2,000
-----	---	---	---------

236	U	1855 1/- pale yellow-green on blued paper, London print, 4 margins (1 touches). SG 3. Cat £5500. GU.	\$1,000
-----	---	--	---------

237	U	1855 1/- pale yellow-green on blued paper, London print, imperf 4 margins, star wmk. Barred "1" cancel. GU. RPSNZ cert (1989). SG 3. Cat £5500.	\$2,500
-----	---	---	---------

238	U	1d red on blue paper, horiz pair, imperf 2 margins cut into "10" pmk. SG 4. Cat £4000.	\$1,500
-----	---	--	---------

239	U	1d red on blue paper, imperf 4 margins, small mark on reverse does not detract. Fine colour. SG 4. Cat £2000. FU.	\$1,000
-----	---	---	---------

240	U	1d red on blue paper, imperf 4 margins (1 close), "16" pmk. SG 4. Cat £2000. FU.	\$850
-----	---	--	-------

241	U	1d red on blue paper, imperf 2 margins, light indistinct cancel. SG 4. Cat £2000. FU.	\$500
-----	---	---	-------

242	U	1d red on blue paper, imperf 4 margins, fine barred "16" pmk (Port Victoria). SG 4. Cat £2000. FU.	\$850
-----	---	--	-------

243	U	1/- green on blue paper, no wmk, imperf 3 margins, '10' pmk. SG 6. Cat £3750. FU.	\$2,500
244	U	1/- green on blue paper, imperf 3 margins. SG 6. Cat £3750. FU.	\$1,500
245	U	1/- green on blue paper. 4 good margins. SG 6. Cat £3750. FU.	\$1,500
246	U	1d dull orange imperf horiz pair, no wmk, full margins, just touches one corner, minor oxidation 1 corner. SG 8. Cat £1500. FU.	\$1,200
247	U	1d dull orange, imperf horiz pair, full margins, no wmk, vert crease pmk. SG 8. Cat £1500. FU.	\$500
248	U	1d dull orange, imperf 4 good margins, just touches 1 corner, no wmk, "16" pmk. SG 8. Cat £750. FU.	\$400
249	M	1d dull orange, imperf 4 margins (very close at top), no wmk. Unused no gum. SG 8. Cat £3500.	\$1,000
250	U	2d blue on white paper x 10, full range of shades. Pale blue strip of 3 full margins, 2d deep blue horiz pair full margins, 2d blue horiz pair full margins, 2d steel blue 3 margins, 2d deep blue 3 margins cut into, 2d blue 4 margins showing re-entry R4/6. All FU except 1 stamp small tear. SG 9-11, Cat £2080+. Nice lot.	\$1,500
251	U	2d blue horiz strip of 3, imperf, full margins. HM soft paper. Ex Dumas. SG 10. Cat £540. FU.	\$500
252	U	6d chestnut, imperf 4 close margins, no wmk. SG 15. Cat £600. FU.	\$400
253	/	Used seln on stockcard: SG 16 imperf 4 small margins usual back thins; SG 35 re-entry 3 margins (R11/3, CP A1&z); SG 72, 76, 80; SG 85 (4 margins) & SG 110 vert pair (unused no gum). Cat approx £3500.	\$800
254	U	1/- dull emerald-green, imperf 4 margins, no wmk, light back thin. SG 16. Cat £1800. FU.	\$500
255	U	1/- dull emerald-green, imperf 4 margins (1 close), small partial crease. SG 16. Cat £1800. FU.	\$500
256	U	1/- dull emerald-green & blue-green, imperf each 3 margins just touches 1 corner, no wmk. Each very minor fault, good colour. SG 16, 17. Cat £3600. FU.	\$1,000
257	U	1/- blue-green, imperf 4 margins, no wmk, "11" pmk, diagonal crease. SG 17. Cat £1800.	\$500
258	U	1/- blue-green, imperf 4 margins, usual back thin (at top), no wmk. SG 17. Cat £1800. FU.	\$500
259	M	1d orange-vermilion, imperf (4 narrow margins), star wmk. Light stain above "P" of penny. MNG. SG 33. Cat £950	\$350
260	M	1d vermilion, 4 margins, star wmk. SG 34. Cat £750. Unused no gum.	\$500
261	M	1d carmine-vermilion, 3 margins, star wmk. SG 35. Cat £450. Unused no gum.	\$300
262	M	1d carmine-vermilion, 4 margins, star wmk, just touches 1 corner. SG 35. Cat £45. OG mint.	\$500
263	U	2d ultramarine, imperf (4 narrow margins), star wmk, plate 1 with traces of wear. CP A2d(5). Cat \$2000. GU/FU. RPSNZ cert (2015).	\$750
264	M	2d pale blue (plate 1, worn), imperf 3 margins, touches on 4th. SG 38. Cat £700. Unused no gum.	\$750
265	M	3d brown-lilac imperf pair, star wmk. All margins but close 2 points. Horiz crease. SG 40. Cat £1200. OG mint.	\$500
266	M	6d pale red-brown, imperf (3 margins, 4th touches frame along top), star wmk. Small light back thin. Unused no gum. SG 43. Cat £1600.	\$500
267	U	3d brown-lilac, rouletted 7 on 2 sides, star wmk. SG 52. Cat £850. RPSNZ (2018). GU/FU.	\$300
268	U	1/- green, rouletted 7, discernable at left & internal row at right, star wmk. Small back thin & 1mm tear from the internal roulette line to the outer margin. SG 56. Cat £900. RPSNZ Cert (2018). FU.	\$400
269	U	3d brown-lilac, p13, star wmk. SG 74. Cat £500. GU/FU.	\$250
270	U	1/- pale yellow-green, p13, star wmk. SG 80. Cat £375. FU.	\$300
271	U	1d orange-vermilion, imperf 4 close margins, Pelure paper, small thin top left corner. SG 81. Cat £2500. FU.	\$750
272	U	2d ultramarine, imperf 2 margins, Pelure paper. SG 82. Cat £850. FU.	\$300
273	U	2d pale ultramarine, imperf 4 margins, close at top Pelure paper. BPA cert 1959. SG 83. Cat £800. FU.	\$600
274	U	1/- deep green, imperf 4 margins, Pelure paper, tiny scuff in value tablet. SG 86. Cat £1100. FU.	\$500
275	U	1/- deep green, imperf 4 close margins, Pelure paper. SG 86. Cat £1100. FU.	\$750
276	U	1d orange-vermilion, imperf at foot, Pelure paper, thin at top shows through to front. SG 90. Cat £3500. FU.	\$500
277	U	2d dull deep blue, imperf 4 margins, thick white paper, no wmk, "16" pmk. SG 96. Cat £800. GU/FU.	\$500

278	U	2d dull deep blue, imperf, 4 good margins, thick white paper, no wmk, "CHCH" barred cancel. SG 96. Cat £800. GU.	\$500
279	U	Imperf wmk NZ, range of 4: 1d carmine-vermilion x 2 shades; 1/- green x 2 shades (1 with invt wmk). All 4 margins but 2 are close at 1 point. Ex Lovis. SG 97, 100. Cat £1250. FU.	\$800
280	U	1d carmine-vermilion horiz strip of 3, imperf full margins except just touches bottom middle stamp, NZ wmk. "1" in diamond in oval cancels. Ex Dumas. SG 97. Cat £1050. GU.	\$750
281	M	1d carmine-vermilion, imperf 4 margins (1 close), NZ wmk. SG 97. Cat £950. OG mint.	\$750
282	M	1d carmine-vermilion, imperf 3 margins, NZ wmk, (toned gum). SG 97. Cat £950. OG mint.	\$400
283	/	2d blue retouches (plate II), p12½, star wmk colln of 13 diff prominent retouches with annotated enlarged photos on 2 well written up pages, total 27 stamps (incl horiz strip of 3 & pair). All used except 1. SG 115a.	\$850
284	U	4d rose, pmk well clear of face. SG 119. Cat £250. FU.	\$250
285	C	4d yellow (p12½, star wmk) + 2d blue on envelope tied by "A3" barred cancels, addressed to England. Paid London 3 JL 69 receiving cancel in red. B/s Shortland MR 8 69, Auckland MR 9 69 & Alford JU 4 69.	\$800
286	C	4d yellow (p12½, star wmk), with 6d red-brown on envelope tied by heavy Dunedin DE 20 67 duplexes, sent to England. B/s Bolto MR 23 68. Rather aged.	\$800
287	U	4d orange, p12½, star wmk. Part duplex cancel & small part red cds (probably London receiving pmk). Well above average cond for this scarce shade. SG 121. Cat £1000. FU.	\$1,000
288	U	1/- green, horiz pair, p12½, star wmk. SG 124. Cat £280. FU.	\$200
289	M	1d brown, horiz pair, very worn plate, p12½, no wmk, 1 missing perf at foot. SG 137. Cat £2600. Unused no gum.	\$1,500
290	U	2d vermilion, wmk double lined capitals (U of "SAUNDERS"). Shows retouch, RPSNZ cert (2015). SG 138c. Cat £800. FU.	\$750
291	U	Imperf set to 1/- (1 x 1d); 6d (the 3 shade groups, 6d brown is Richardson print - SG 13), all 4 margins, a nice set. Jury cat \$1750. FU.	\$1,250
292	M	1d red, 1d orange-vermilion, 1d brown, 2d blue, 3d lilac, 4d yellow, 6d red-brown, 1/- yellow-green, perf issues (1d brown, 3d no gum). Jury cat \$3900. Mint.	\$1,500

Full Face Queens Specimens & Reprints etc

293	S	1d brown perf "SPECIMEN" (Type C), horizontally in purple, no gum.	\$400
294	S	2d orange perf "SPECIMEN" (Type C), horizontally in purple, no gum, slightly grubby lower left.	\$400
295	S	4d yellow perf "SPECIMEN" (Type B), diagonally upwards in purple (not recorded by Odenweller).	\$480
296	S	4d yellow perf "SPECIMEN" (Type C) horizontally in purple (not recorded by Odenweller), no gum.	\$400
297	S	6d blue perf "SPECIMEN" (Type C), invtd diagonally in red (not recorded by Odenweller), no gum, perf tone.	\$400
298	S	4d yellow perf "SPECIMEN" (Type C), diagonally in red (not recorded by Odenweller), no gum, perf tone.	\$400
299	S	1/- yellow-green perf "SPECIMEN" (Type B) horizontally in blue - no gum.	\$400
300	S	1/- yellow-green perf "SPECIMEN" (Type C) diagonally downwards in red (not recorded by Odenweller), no gum, odd tone.	\$400
301		Hausburg reprints x 25: 1d x 2, 2d x 5, pair & block of 4 x 2; 3d x 2; 4d x 2; 6d x 2; 1/- x 2 + vert pair 2d Joliffes. (Plus 14 modern reproductions).	\$400
302		Hausburg reproductions set 6, 7 to 1/- (incl 2d plate I & II) on thin yellowish paper; 6 on light card & 1d, 2d, 6d blk of 4.	\$750
303	P	1913 Joliffe reproductions plate proofs x 2 panes of 42, rows 14-20 stamps 1-12 (R13/12 Hausburg).	\$250

First Sidefaces

304	C/	1873-1892 ½d Newspaper stamp colln in Lighthouse album with dust box - various mint/MNG/U/FU/ covers/newspaper wrappers neatly arranged on pages, little or no annotation & roughly in issue order with varieties & errors (double perfs/imperfs etc). Noted 2 x OPSO mint (no certs), attractive Kempthorne & Prosser advertising cover, 17 newspaper wrappers, 11 fiscally used, incl pair with double perfs. Approx 450 singles/multiples, 2 dozen covers to inland & overseas destinations & single p10 x 12½ unused, RPSNZ (1978) cert.	\$6,000
-----	----	--	---------

305	M	1873 ½d Newspaper stamp, horizontal pair, line p12½, letter wmk. CP B1b(Y). Cat \$650. Mint.	\$240
306	M	1873 ½d Newspaper Stamp p10 x 12½, vertical mesh, no wmk, regummed mint. CP B1c(V). Cat \$800 as MUH. RPSNZ (2017) Cert.	\$300
307	/	1873-1900 Newspaper, FSF, SSF specialised mostly used colln on pgs. Noted 2/-, 5/- x 2 FSF (5/- x 1 reperfed at left), most stamps have identifiable pmks. Interesting range annotated by SG No's & also many by pmk type & Wooders rating. Total 15 Newspaper, 32 x FSF & 250+ SSF (incl 8d x 5).	\$1,200
308	/	1873-c1895 Mostly used Newspaper, FSF & SSF colln on 10 pages. Condition varies but noted 2/- used, 5/- mint (faults).	\$600
309	P	1874-1898 1d to 1/- FSF (6v) imperf "CANCELLED" ovpts; 1d to 1/- (6v) SPECIMEN (2 types) h/s - no 3d but 2 x 1/-; SSF 5d dull pink imperf plate proof single; 1d to 1/- (7 diff) official reproduction x 2 sets & 1898 2d Pembroke Peak imperf plate proof. (28v).	\$780
310	/	1874-78 seln on stockcard: 1d, 3d, 4d, 6d, (2 diff shades), 1/- x 2 (1m rounded corner & 1 gu/fu), 2/- x 2 (1 with rounded corner) & 5/- x 2, all gu/fu. (11v). Jury cat \$3900.	\$600
311	M	1874 1d, 2d (no gum), 3d, 6d p12½. Also 2d large star wmk. CP cat \$3725. Mint.	\$1,000
312	M	1874 set, fine mint. Jury cat \$3800.	\$2,500
313	M	1874 2/-. Jury cat \$1100. Mint.	\$500
314	M	1874 5/-. Jury cat \$1100. Mint.	\$500
315	M	1874 set to 5/-. Exceptional set, very fresh. p12 x 11½. CP cat \$4955. Mint (1d MUH).	\$2,000
316	M*	1878 1d pale mauve-lilac, extraordinary blk of 24 (6 x 4) with interpane selvage at left. Ex Gwynn (see CP description of Feb 2013 enclosed with lot). Believed to be the largest existing blk of any First Sideface issue in private hands.	\$6,000
317	M	1878 2d rose mint block of 4. Scarce multiple.	\$500
318	S	c1891 ½d Newspaper stamp x 5 "SPECIMEN" h/s on each - 2 diff sizes & 2 diff colours, 3m & 2mng.	\$400
319	/	1892 ½d Newspaper stamp horizontal strip of 12, p12½, "NEW ZEALAND" letters wmk mint/MUH, also similar but strip of 6 ("NEWZ") mint & strip of 4 ("NEW") gu/fu. CP B3a(y). Cat \$1400+.	\$360
320	M*	1892 ½d Newspaper stamp, p12½, horiz strip of 12, "NEW ZEALAND" letters wmk, mint, mostly MUH. With side selvages. CP B3a(Y). Cat \$900.	\$280

Second Sidefaces

321	M*	1882 1d rose, 4d green, p11, blocks of 4 mint (4d MUH). CP cat \$1170.	\$500
322	M*	1882 set p12 x 11½ (except for 8d which has advert). Also ½d Newspaper stamp. All mint except both ½d, 2d & 4d which are MUH. 1d is a top selvage copy with extra row of perf 14 at top of the margin. CP cat \$1780.	\$750
323		c1891 UPU Presentation set. ½d to 1/- with 2 diagonal bands across LR corner. 1/- stamp slight surface scratch.	\$250
324	U	1893 1d (mostly) adverts x 360 horizontal or vertical pairs, on 13 Hagners. Ideal for plating. GU/FU.	\$2,000
325	M	1893 1d - 1/- adverts x 35 mint/mng/odd cleaned fiscal, on Hagner. Noted 4d x 3 m, 5d x 2 m, 8d x 6 m.	\$1,000
326	M	1893 8d red-brown adverts block of 4, 3 of which are Beecham's (each is different). Unused no gum. CP cat \$1600.	\$320
327	S	1893 1/-, p12 x 11½, Beecham's advert, SPECIMEN h/s in purple. Mint.	\$480

1898 Pictorials

328	/	c1898-1908 seln on Hagner: 6d green x 4u, 1½d x 4u, 6d reduced x 4u, 2/- x 4u. Also Officials 6d m, 3u; 2/- m & u, 6d reduced u + few odds. 31v. Mixed cond. Jury cat \$2700+.	\$400
329	U	1898 ½d - 1/- (excl 9d) simplified in blocks of 4. Hard to find. GU/FU.	\$1,000
330	/	1898-1907 ½d, 1d, 2d & 3d mint & used range of perfs, wmk, shades etc, dupn & mixed cond. Approx 350v on 8 stockpgs. ½d x 3 mint & 31 used; 1d Taupo x 45 mint & 37 used; 1d Terraces x 11 mint & 29 used; 2d x 3 mint & 33 used; 2d 1900 x 18 mint & 39 used; 3d x 9 mint & 87 used; 3d reduced x 2 mint & 12 used. Cat simp \$3600+.	\$500

BID BY MAIL, FAX, TELEPHONE, EMAIL OR ONLINE AT WWW.MOWBRAYCOLLECTABLES.COM

331	M*	1898-1907 Pictorials local prints block of 4, 1d White Terraces (all MUH), 2d purple p14 x 2 shades (3 MUH), 3d Huias no wmk p11 (all MUH). CP cat \$1355.	\$600
332	M*	1898 2d brown-lake Pembroke, London print, corner sheet number block of 9 (6 MUH). CP cat \$2250.	\$1,000
333	C	1898 2½d Wakitipu on cover, pmk 5 April 1898 (one of 5 known FDCs), error of spelling.	\$1,200
334	/	1898-1906 2½d Wakitipu, Wakatipu, mint & used seln of 160v on 4 stockpgs, some mixed cond. 2½d WAKI x 7 mint & 4 used; 2½d WAKA London print x 3 mint & 16 used; p11 no wmk x 5 mint & 67 used; p11 wmk x 1 mint & 30 used; p14 x 1 mint & 26 used.	\$400
335	/	1898-9 6d Kiwi green seln of 17v (+ 2 fiscals) on stockpg - variable cond: London print x 1 mint & 11 used; (+ 2 fiscals not counted in CV); p11 x 3 mint & 2 used. Cat \$2105.	\$325
336	*	1898 6d Kiwi green, offset on back. CP E14az. Cat \$1500. MUH.	\$750
337	/	c1898-1907 8d Canoe mint & used range, variable cond on 2 stockpgs: London print x 7 mint; p11 no wmk x 4 mint & 1 used; p11 x 2 mint & 8 used; p14 x 4 mint & 18 used. Cat \$2240.	\$225
338	*	1898 9d Terraces local print, p14. block of 4. CP cat \$1000. MUH.	\$500
339	/	1898-1908 Extensive specialised mint & used colln on pgs, good range papers, perfs etc but also many identifiable pmks. Annotated by SG No's & many with pmk type & Wooders rating. Noted 2/- x 18 (11 used, 7 mint & 5/- x 12 (2 used, 4 fiscal, 16 mint incl superb 1899 p11 sideways wmk). Incl reduced issues, over 500 stamps. High cv.	\$2,500
340	M	1898-1907 quality mint colln of all printings with London & 1st local prints, well covered to 5/- & with London 6d & 8d. Also 5/- London lightly foxed. Later incl 2/- Cowan p14. 81 stamps. CP cat \$8000 (excl toned & no gums stamps).	\$2,500
341	/	1898-1907 12 page colln. Noted 3 x 5/- mint, many handy. Condition varies. Mint & used.	\$1,250
342	M*	1898 set to 5/-, London print. Mint (4d MUH). CP cat \$3170.	\$1,000
343	M	1898 original simplified set to 5/-. Jury cat \$2000. Fine mint.	\$1,000
344	U	1900 ½d-6d Kiwi blocks of 4, hard to find. FU.	\$250
345	M	1900 1½d Boer War, p11 x 3 distinct shades: brown, very pale chestnut & reddish-chestnut. CP E4a(2), (5), (6). Cat \$1760.	\$750
346	U	1900 1½d Boer War "khaki" shade, p11. CP E4a1. Cat \$4-5000. RPSNZ cert (2018).	\$2,000
347	/	1900 4d Taupo accum: 11 mint/muh; 230 used; 17 covers (including 2 advertising covers) some spiked, & 1 fiscal. Also 1898 1d Taupo accum: 150+ mint/MUH; 1200+ GU/FU, 16 covers & 125 fiscals. Incl annotated flaws, shades, wmk, perfs, an 1898 boxed LOOSE LETTER flapless cover to Blenheim with M/1 obliterator on 1d Taupo with arrival b/s 25 July 1898, & a forged 4d OPSO. Will repay careful study. Mixed cond. All MUH cat as mint & all cat on a simpl basis = \$3,500+.	\$600
348	/	1900-6 6d Kiwi red, original design, mint & used seln of 124v on 3 stockpgs, mixed cond: p11 no wmk x 2 mint & 87 used; p11 wmk x 4 mint & 27 used; p14 x 4 used. Cat simp \$2220 if all ok.	\$350
349	*U	1902 4d Taupo, p11, deep blue & chestnut, lower selvedge single, deep blue colour shift 2mm downwards, fresh, MUH. Also 1903, p14, reversed wmk x 2 diff shades, GU/FU. CP E12b(1) var; E12b (W). Latter two cat \$750. (3v).	\$250
350	U	1902-3? 6d Kiwi rose-red, p11, abnormal upright wmk. Light 1903 Gisborne squared circle pmks, o/c. CP E14f. Cat \$5500. FU.	\$2,000
351	*	1902 2/- Milford, no wmk, p11, Laid paper block of 4. SG 269a. Cat £900. Brandon (1994) cert. CP E20c. Cat \$8000 as mint. MUH.	\$4,000
352	M	1903 4d Taupo horiz left selvedge pair imperf vertically, fresh. CP E12c(Y). Cat \$1800. Mint.	\$500
353	M	1903 4d Taupo, blue & yellow-brown, horiz lower selvedge pair, mixed perfs, officially patched at top, some perf separation on 2nd stamp, fresh. CP E12e(1). cat \$2,500. Mint.	\$600
354	*	1903 4d Taupo, attractive error: blue & yellow-brown, upper selvedge single, mixed perfs, fresh. MUH (mounted on selv). CP E12e(1). Cat \$1,750.	\$500
355	*	1903 9d Terraces & 2/- Milford, p11, wmk paper. MUH. Ex Stanley Gibbons. SG 314, 316. Cat £230 (Jury cat \$1350 MUH).	\$500
356	M*	1906 5/- Mt Cook, local print, p14, wmk, upright block of 4 (2 MUH). A beautiful sheet margin block. CP E21f. Cat \$6600.	\$3,250
357	U	1907 3d Huias, 6d Kiwi redrawn in blocks of 4 (3d vert block of 6), hard to find in this format. FU.	\$200
358	/	1907-8 Reduced colln on 2 pages. Noted 6d Kiwi blk of 4 FU, King Edward VII Land ovpt on 1d Universal FU. Mint & used.	\$250



332



ex 331



338





Ex 210



Ex 211



Ex 213



Ex 214



Ex 217



Ex 216



Ex 218



Ex 219



Ex 220



Ex 224



Ex 223



Ex 225



Ex 226



227



228



229



230



231



233



232



234



235



236



237



238



239



240



241



242



243



244



245



246



247



248



249



251



252



254



255



256



257



258



259



260



261



262



263



264



265



266



267



268



269



270



271



272



273



274



275



276



277



278



280



281



282



284



287



288



289



290



291



293



294



295



296



297



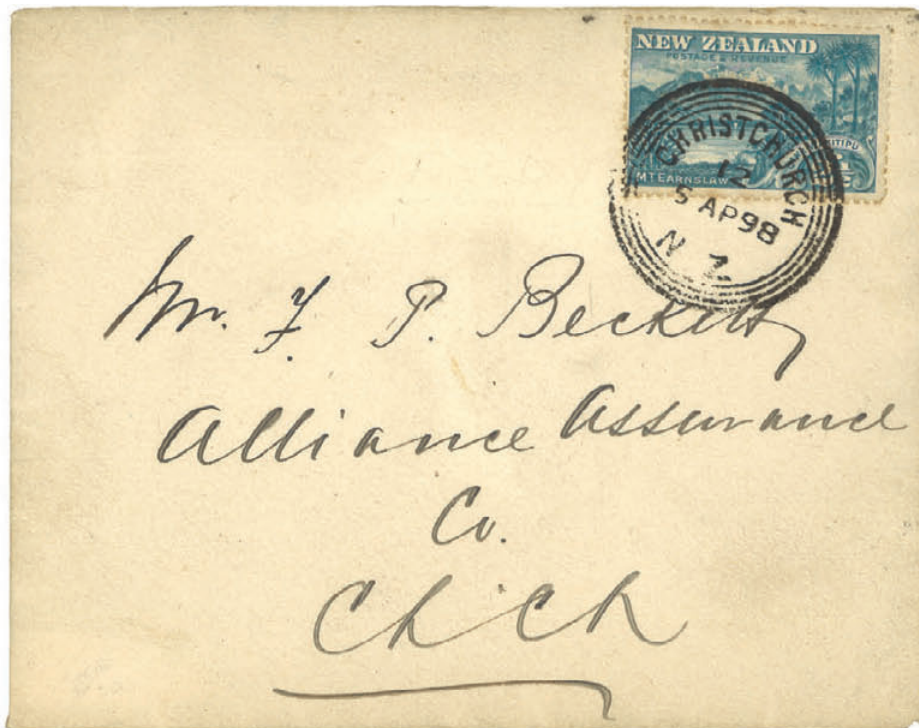
298



299



300



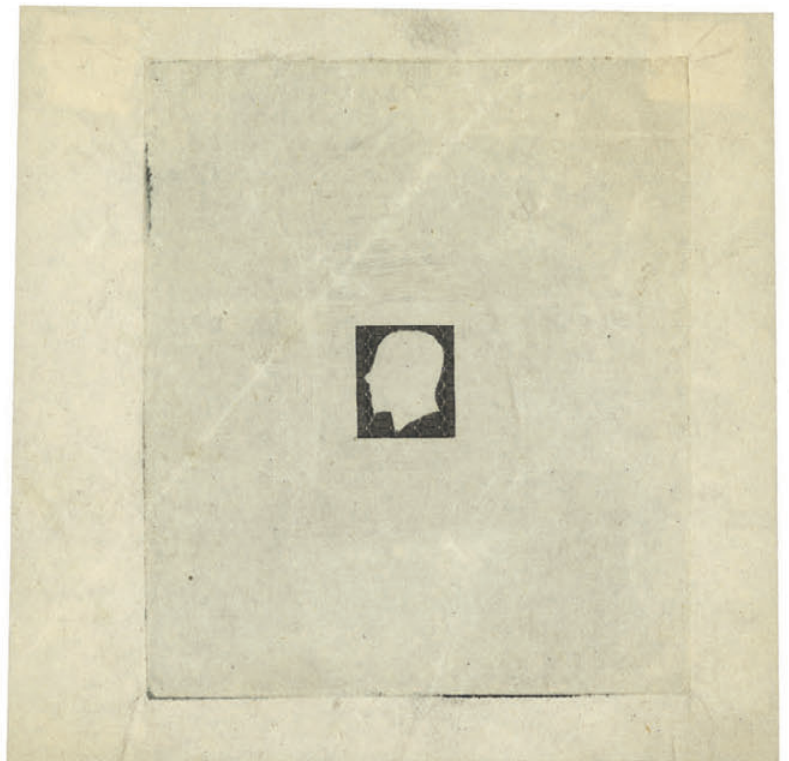
333



408



Ex 366



371

1d Universals

- 359 / 1901-8 Specialised colln on pgs, range of papers etc but also many with identifiable pmks, annotated with SG No's & pmk type (incl Wooders rating). Noted (WHAN)GARIPO "H" class (Wooders 10) + 24 others rated Wooders 6-8, plus 20 ½d green Mt Cook's + 1d EVII Land FU (toned). \$500
- 360 C 1901 London print FDC pmk "Glenary' 1 JA 01". CP cat \$350. \$160
- 361 M* 1901 Basted Mills, horiz blk of 12 with left selv, mixed perfs 11 & 14 vertically, officially patched. Incl R6/2 (R2/2 of this blk) re-entry (at top of letters "ONE P" & below them). A few minor gum tone spots, 3 stamps hinged. RPSNZ cert (2016). CP G3e. Cat \$3000+. Mint/MUH. \$1,150
- 362 / 1907-6 colln on 6 pgs. Noted plate blocks of 4: R1, R2, W1, W2, vert pair imperf horizontally. Mint & used. \$1,000

Kind Edward VII

- 363 / 1909-16 Specialised colln on pgs incl 1d Doms, good range of shades & perfs etc, the used seln incl many identified pmks. Annotated by SG No's & pmk type incl Wooders rating. 3 (+ 12 Doms) mint; 69 (+ 83 Doms) used. Good cv. Pmks incl Toi(Toi), (M)angaramarama, (Opa)rua Ferry (all rated 9). \$600
- 364 M 1909 set, mint to 1/-, plus 1913 Auckland Exbn set, mint. Jury cat \$1275. \$750
- 365 P 1909 EVII UPU Presentation set. ½d to 1/- (both 4d) with 2 diagonal bands across LR corner. \$250
- 366 * 1909 set of 9 in blocks of 4 (4d orange LH 1 stamp, 6d 2 hinged). Jury cat \$4200. MUH. \$2,750
- 367 / 1909-16 range of mostly used on 6 pages. Noted 4d yellow FU block of 4, 2d x 3, 5d, 8d blocks of 4 mint. Condition varies. Jury cat \$2000+. \$400
- 368 P c1910 plate proofs (imperf blocks of 4) on thin card: 3d, 4d x 2, 5d x 2, 6d, 8d, 1/- x 3 (3 diff colours). \$960
- 369 U 1915 3d horiz block of 8, p14 x 13½. Auckland East 14 JA 16 cdss. Possibly the largest used block. GU nearly FU. CP H3c. Cat \$3200. \$1,000

1d Dominions

- 370 M* 1925 DLR unsurfaced paper, mint (3 MUH) block of 4. CP J3a. Cat \$1350. \$400

King George V

- 371 c1912 Essay die proof of the engine turning used to surround the King's head, in black on thin wove paper (102 x 104mm). Produced by Perkins Bacon. The same engine turning as used for the GB "1d Black". Fine & rare. Ex Sussex. \$1,000
- 372 / 1915-34 strong, predominantly mint colln with excellent range of shades. Noted mint: 12 blocks (mint/MUH), 4d aniline violet x 4 (both perfs, touch of gum toning), 4d dull claret from very worn plate, 4d plate single plate 44, 4d purple p14 x 13¼. 4 x 8d brown, 10 x 1/-, 8d Official, 1½d surface Cowan p14 x 15. Recess 120+ mint, 25 used, Surface c60 mint, 3 used. Huge cat. \$2,600
- 373 / c1915-34 ½d to 1/- mint/MUH/used/fisc used seln on 34 Hagners, incl Recess/Surface ordinary/officials, varieties, singles/multiples with some perf/wmk sorting. Noted 3d Recess invt wmk x 2 used; 9d misperfed mint; 2d official vertical pair dramatically misperfed. Also incl seln Pacific Isl ovpts mint/MUH & Fanning Isl cancels at end. Approx 1350v, mixed cond. \$960
- 374 / 1915-35 extensive Recess & Surface prints colln in Lighthouse album with dustcase, comprising mint/MUH/used singles/multiples, dupn with various covers showing solo stamp or multiple stamp usages. Noted: 2d dull violet horiz pair (imperf) "COLOUR PRINT" 2½d 2-perf paid fine (commercial) used; 4d orange imperf pair "COLOUR PRINT"; 6d plate 37 (single); various FFCs & attractive 1/- block of 6 "WAITAKI HYDRO" cds. Variable condition incl a few items that appear to have been bleached. But good basis for forming a major GV collection as many unusual items. Cat \$21,000+. \$4,000
- 375 P 1915 "COLOUR PRINTS": a) Recess (imperf) 1½d, 2d x 2, 3d x 2 diff colours, 4½d, 7½d x 3 (2 diff colours); b) 2d yellow (perf) x 2. Plate proof block of 4 in black, 5d (imperf), also surface (imperf singles), 1½d, 2d & 3d & 2d p12½ - all in black. Also "CLEANED" h/s in black on 6d x 2 & 1/-. 22v. Mixed cond. \$800
- 376 / 1915-c1933 Specialised recess & surface collns on pgs. Mint & also used with many identifiable pmks. Annotated with SG No's & the used with pmk type & Wooders rating. Nice range shades etc. About 80 mint & about 150 used. Noted several rated Wooders 6 to 9. \$750
- 377 / 1915 old time colln on 13 pages. Extensive lot with many FU blocks of 4. Noted 1926 Admirals 2/- x 6, 3/- x 3 (incl 2 MUH). Worth inspection. \$1,500
- 378 U 1915 set to 1/-, 2 perf pairs FU (cto). Excl 2½d, 4d violet. SG cat £2185. \$750

379	S	c1915 ½d to 1/- (11v) presentation cancels (diagonal lines but do not cross corners, as usual) with accompanying "With compliments of PMG" printed letter.	\$400
380	*	1915 set, recess & surface prints. Jury cat \$970. MUH.	\$240
381	P	c1921 1½d to 1/- (12v) imperf plate proof singles in black, also 1½d to 1/- recess (11v) presentation examples mint.	\$400
382	U	1925 2d yellow "litho" wmk, block of 4, pmk "Tomahawk 2 DEC 25". CP K18c. Cat \$1200. FU.	\$500
383	/	1926-30 Admirals & 1d Field Marshal colln on pgs, incl mint 2/- & 3/- both papers (extra 2/- Cowan), 2/- x 10 used, 3/- x 6 (most parcel). Also 80+ used, 1ds most with identifiable pmks & annotated with pmk type & Wooders rating (several rated 6-7).	\$850
384	M	1927 2d Surface print, p14 block of 4, variety imperf at top. CP K18h(x). Cat \$1000. Mint (hinged on selvedge only).	\$400
385	M	c1930's Official presentation album with GV to 3/-, Cook Isl GV Pictorials to 1/-, GV Pictorials to 1/-. All stuck down on pages. Attractive. Mint.	\$200

1935 Pictorials

386	/	c1935-42 specialised mint & used colln/accum on s/b pages - identified by CP no's - range of papers, perms etc with some blocks & pmks - over 500 stamps.	\$750
387	/	1935-42 Specialised mint & used colln on pages. Noted 2/- invt mult wmk, p13 - 14x13½; FU (tone spots); 3/- single wmk, p13½ x 14 MUH. Used incl many with identifiable pmks annotated with pmk type & Wooders rating - incl several to rating "7". Total 33 mint & about 100 used.	\$750
388	C	1935 set of 14 on separate FDCs. Jury cat \$450.	\$200
389	*	1936-42 8 Plate blocks, 2nd wmk, 5d (1), 6d (1), 8d (1), 1/- (1), 2/- (4), incl 2/- plate 1 perf 12½ (fine paper) & 13¾ x 13½. Also 4 other plate singles, pairs etc. MUH but pencil notations on selvedge. CP cat \$2990 (PBs only).	\$600
390	*	1942 5d Swordfish complete sheet 120 of p12½, coarse paper plate 2. Some minor separations in selv & on gum side a few light tone spots on minority of stamps (incl plate block). Of research interest as this is the "spotted plate". PSNZ Vol II p25-26 does not identify re-entries to be found on this printing. CP L8e. Cat \$12,400. MUH.	\$2,000
391	*	1942 8d Tuatara complete sheet of 160, p14 x 14½, coarse paper, plate 4. CP L10e. Cat \$1680. MUH.	\$500
392	*	1942 3/- Mt Egmont complete sheet of 60, p14¼ x 13½, coarse paper, incl R9/4 re-entry. CP L14g/y. Cat \$2075. MUH.	\$1,000

King George VI

393	*	1938-53 Very specialised colln mounted on pages with detailed typed descriptions. Nearly all as plate blocks & virtually complete missing only the very scarce items. Well over 250 PBs + some imprint blocks, coil strips, booklet panes + other blocks & strips. Strong in paper varieties & some shade varieties & plate flaws. Huge cv but many items affected by the occasional tone spot. Mint/MUH.	\$1,500
394	C	1941 1d on ½d, 2d on 1½d ovpts FDC, Wellington 'C' class 1 May pmk. Addressed to Searle. CP cat \$350 for 1d.	\$200
395	C	1941 1d on ½d, 2d on 1½d ovpts FDC. Slogan 1 May pmk. Addressed to Searle. CP cat \$350 for 1d.	\$200

Queen Elizabeth II Pre Decimal

396	*	1954-57 2/6d-10/- QEII plate blocks of 4 and upper right corner value inscription blocks of 4. CP cat \$3555. MUH.	\$1,000
397	/	1954-63 QEII seln on stock page: 2/6d-10/- MUH; 10/- x 10u; 3/- Official x 11 mint/MUH, 12 used + misc. (51v). Jury cat \$1600+.	\$320
398	U	1958 2d QEII stars ovpt error. Jury cat \$350. FU.	\$200
399	*	1958 2d QEII stars ovpt error. Jury cat \$300. MUH.	\$180
400	*	1958 2d QEII stars ovpt error block of 4. Jury cat \$1200. MUH.	\$750
401	M	1960 3d Flower, variety green omitted (with normal). SG 758b. Cat £325. Mint.	\$200
402	*	1960 3d Flower vert strip of 3 showing yellow-brown partially omitted on lower 2 stamps. Variety stamps MUH. SG 785c var.	\$200

BIDS BELOW 70% OF ESTIMATE WILL NOT BE CONSIDERED

403	M*	1960-68 Pictorials specialised colln on pages with detailed typed descriptions, incl plate blocks, blocks showing positional flaws etc. Noted 3/- to £1 value blocks of 4 & imprint & plate, no blocks of 6, each mounted twice. High cat! Mint/MUH.	\$500
404	*	1960 1/3d Trout, variety carmine omitted (with normal). SG 792a. Cat £850. MUH.	\$750

Decimal

405	*	1967 7c Rata imperf block of 4. MUH.	\$250
406	*	1967-89 MUH colln incl plate blocks etc. Huge cat value (face value \$1750) incl 1967 \$2 Pink x 22, 1968 \$2 x 22 plus FU block of 4. Well presented in 6 Senator albums.	\$2,500
407	*	1968 10c Timber Industry, variety green background omitted (with normal). SG 873a. Cat £950. MUH.	\$1,000
408	*	1974 8c John Dory, missing blue-green colour error in block of 4. Spectacular variety. CP P11bx. Cat \$3000. MUH.	\$1,750
409	M	1974 18c Maori Club, black colour omitted error (with normal), no wmk. CP P14bx. Cat \$1200. Mint.	\$400
410	*	1979 4c on 8c Rose, double print (1 albino) error, plate/imprint blk of 14 (2B2B2B2B2B), incl sheet no & punch hole guide. CP PA30az. Cat \$4900+. MUH.	\$1,150
411	*	1979 14c on 10c QEII value block of 4, surcharge invtd variety error. SG 1202b. Cat £1600+.	\$1,500
412	*	1979 \$1 Scallop top right corner value vert block of 6, partial imperf 1 pair, imperf between top & side 2nd pair. CP P19a(y). Cat \$2000+. MUH.	\$1,000
413	P	1985, 24c, 30c Queen Essay (plain sash) Proofs (5 each) in sheets of 49 (44 blanks). Stamps actually issued as 25c, 35c. Very minor perf tone. MUH.	\$1,500
414	*	1991 \$3 Moth, variety grey & apple-green omitted error (with normal). SG 1642a. Cat £600. MUH.	\$600

NEW ZEALAND - PIGEON POST

415	/	1899 Pigeon Post seln on Hagner: Marotiri 1/- red x 2 m; SPECIAL POST 1/- x 1 m & 1 u; PIGEONGRAM 1/- 1 m, 1 u; SPECIAL POST 1/- blue-green x 6 m & 1 u on piece; Triangulars 6d x 9 m & 3 u; 1/- x 2 m & 2 u - (each value one on piece). 29v. Variable cond. Jury cat \$7600+.	\$1,200
416	/	1899 Triangular Pigeongram set FU plus 6d block of 4 unused no gum. Jury cat \$1250. (Also 8 Law Court stamps).	\$500

NEW ZEALAND - AIRMAIL

417	/	1931-4 seln on stock page: 3d x 13 u; 4d x 11 u; 5d x 4 m, 12 u; 7d x 6 u; 7d TT x 1 m & 2 u. Also 1925 Dunedin Exbn ½d m & u, 1d m, 4d x 10 m & 3 u; 1935 Silver Jubilee 6d x 4 u. (69v). Some variable cond. Jury cat \$3100+.	\$400
418	/	1931 set in mint horiz pairs, plus 1934 FU block of 4. Jury cat \$770.	\$300
419	*	1931-4 set in blocks of 4. Jury cat \$2580. MUH.	\$1,500
420	C*	1931-34, 1935 sets MUH plus 6 covers 1934-5, 1935 set x 8 in blocks of 4, plus extra 10 x 6d. Also 2005 Sesqui sheet showing 3d Air (FU \$33.75). Jury cat \$2095.	\$800
421	/	1934 7d 'Faith in Australia' x 19 MUH & 8 FU. Jury cat \$3450.	\$1,500
422	C	1934 7d 'Faith in Australia' FDC, pmk 17 JA 34 Wellington. Jury cat \$800.	\$320
423	C	1934 7d 'Faith in Australia' FDC regd envelope, pmk Christchurch 17 JA 34, with 3d Air, 2 x 1d GV Aust. Jury cat \$800.	\$320

NEW ZEALAND - COMMEMORATIVES

424	*	1906 ½d Christchurch Exbn block of 9. 1 faint toned perf. Jury cat \$900. MUH.	\$300
425	U	1906 Christchurch Exbn: 1d vertical strip of 4, superb used 31 January 1907 Exbn cds; 6d x 2 GU/FU 13 December 1906 & 31 January 1907 Exbn cdss respectively. Jury cat \$1380.	\$400

426	U	1906 1d claret Christchurch Exbn FU on piece, pmk 20 AP 07. ACS cat \$60,000. Very scarce, only 10 known used.	\$50,000
-----	---	--	----------

427	*	1906 1d claret Christchurch Exbn. ACS cat \$50,000. MUH.	\$30,000
-----	---	--	----------

428	*	1906 1d Christchurch Exbn block of 9. Jury cat \$900. MUH.	\$350
429	*	1906 3d Christchurch Exbn block of 4 with gutter between. Unusual. Hinged on selvage. Jury cat \$1600. MUH.	\$800
430	*	1906 3d Christchurch Exbn corner block of 4. Cat \$1600. MUH.	\$750
431	PC	1906 Christchurch Exbn set as vert pairs, on Exbn postcard. Pmk 9 AP 07. Attractive item.	\$2,000
432	/	1906 Christchurch Exbn sets FU & MUH horiz pairs. Jury cat \$2300.	\$600
433	M*	1906 Christchurch Exbn set in blocks of 4 (2 MUH). 6d slight gum discolouration. Jury cat \$4500. Mint.	\$1,750
434	M*	1906 Christchurch Exbn set in blocks of 4 (2 MUH). Jury cat \$4500. Mint.	\$2,750
435	M*	1906-2000 complete in mint (most mint/MUH) pairs (incl also 1931-5 Airs). (Auckland Exbn MUH). In 3 Warwick albums.	\$2,000
436	/	1906-25 colln on pgs - Chch Exbn sets mint & used (6d cto); Auckland Exbn sets mint & used (6d mint blunt corner, ½d, 3d cto); Victory mint set plus used seln (100+ nearly all with identifiable pmks, annotated with pmk type & Wooders rating, noted Muirs Reef & Ruatiti (both rated 8); Dunedin Exbn sets mint & used; Map used range all 3 papers.	\$1,500
437	U	1906-2000 sets complete, in 2 albums (1906 Christchurch Exbn, 1913 Auckland Exbn cto). Incl 1931-5 Airs.	\$750
438	/	1913 Auckland Exbn seln on Hagner: ½d m & u; 1d m; 3d x 4m; 6d x 6m, 3u (2 are cto). (16v). Variable cond. Jury cat \$6300+	\$1,200
439	U	1913 Auckland Exbn set: 1d & 3d appear cto; ½d & 6d on piece, 6 December 1913 Exbn "C" class cancel. Jury cat \$1300.	\$400
440	C	1913 Auckland Exbn set FU on cover, pmk 7 AP 14 Exhibition pmk.	\$2,000
441	M	1913 Auckland Exbn set. Jury cat \$800. Mint.	\$400
442	M	1913 Auckland Exbn set. Jury cat \$800. Mint.	\$400
443	M*	1913 Auckland Exbn set mint/MUH (MUH to 3d, 6d VLH mint). Cat \$1545.	\$600
444	M*	1913-25 range on 5 pages. High cv but condition varies. Mostly mint/MUH.	\$500
445	/	1920 Victory seln on Hagner: 1d x 8; 3d x 2 m & 2 u; 6d x 6 u, 1/- x 1 MNG, (& 1 damaged), 18 GU/FU. (40v). Variable cond. Jury cat \$2250+.	\$320
446	C	1923 1d Map FDC (wrapper ex NZ Stamp Collector). Indistinct cancel as usual. Jury cat \$500.	\$200
447	C	1925 Dunedin Exbn FDC. Some tone spots. Jury cat \$450.	\$200
448	C	1925 Dunedin Exbn FDC, typed address, to Wilcox Smith & Co. Jury cat \$450.	\$250
449	*	1940 Centennials plate block collns: 1d x 11, 2d x 20, 3d x 3, 8d, 9d x 2, 10d. All different. CP cat \$2290. MUH.	\$500
450	*	1962 3d Telegraph, vert block of 20 (2 x 10) showing variety green colour partially omitted on 8 stamps. MUH.	\$1,000
451	*	1962 3d Telegraph vert strip of 8 showing variety partial green omitted on 4 stamps. MUH.	\$750
452	*	1963 2½d Christmas, imperf horiz pair. SG 817a. Cat £275. MUH.	\$300
453	*	1966 4d Scout Jamboree horiz strip of 6, variety gold omitted on 2 stamps, partially omitted 1. Faint creasing on 2 variety stamps, small stain on other. SG 838a. Cat £2400+. MUH.	\$1,000
454	*	1975 5c Christmas, brown omitted error, with normal. SG 1084a. Cat £170. MUH.	\$175
455	*	1980 14c Zeapex block of 6 (2 strips of 5), black omitted error, with normal. SG 1210ab. Cat £750. MUH.	\$750
456	*	1980 14c Zeapex strip of 32, black omitted error, with normal. SG 1210ab. Cat £375. MUH.	\$400
457	*	1986 30c Music Conductor complete sheet of 100 showing major perforation shifts. CP cat block of 8 from \$275 = sheet \$3300+. MUH.	\$1,000
458	*	1990 40c Heritage, violet blue (face value) omitted error (with normal. SG 1562a. Cat £300.	\$300
459	U	2003 40c Christmas self adhesive, variety missing black silver fern, on 2 DEC cover ex Christchurch. SG 2649. Cat £250. Scarce on cover. FU.	\$200
460	*	2004 \$2 Olympic block of 4, invtd laminate error, with normal single. CP cat \$12000. MUH.	\$4,500
461	*	2004 \$2 Olympic, invtd laminate error, with normal. CP cat \$3000. MUH.	\$1,200

NEW ZEALAND - HEALTH

462	/	1929-34 seln on stockpage: 1929 x 2 mint, 2 used; 1930 x 8 mint, 1 used; 1931 1d red x 3 mint, 12 used; 2d blue x 2 mint, 13 used; 1932 x 1 used; 1933 x 1 mint, 1 used; 1934 x 1 used. (50v). Some mixed cond. Cat Jury \$7000+.	\$1,600
463	/	1929-1947 colln comprising usually at least a single & a blk of 4 mint, & used single of each stamp, some with more. Some with some gum toning. All stamps whether mint or MUH have been counted as being mint in CV of \$4400+. Noted 1929 x 6 m & 1931-34 x 5 m, 1931-4 used (280v).	\$1,250
464	M*	1929-2000 colln of mint/MUH pairs.	\$1,250
465	/	1929-34 colln on pgs, mint complete. Used 1929 x 15, 1930 x 3, 1931 set, 1932 x 4, 1933 x 7, 1934 x 2. The used ones nearly all with identifiable pmks (also 1931-5 Airs mint & used, 1935 Silver Jubilee set mint & used).	\$750
466	/	1929-88 Colln of mint & some used in 2 s/b's incl blocks/m/s etc. (1931 small faults).	\$750
467	M*	1929-31 as MUH horiz pairs (1929 block of 4, 1931 2d mint). Jury cat \$2010.	\$600
468	U	1929 Nurse block of 4, pmk 1st day of issue. (FDC Jury cat \$900). FU.	\$500
469	U	1929-30 Nurses in blocks of 4. Jury cat \$500. FU.	\$200
470	*	1929 Nurse x 31. Jury cat \$1860. MUH.	\$600
471	U	1929-2000 sets complete. FU.	\$500
472	U	1930 Nurse block of 4. Fine Waiaupa 6 NO 30 "J" class cds. Jury cat \$400. FU.	\$250
473	*	1930 Nurse x 15. Jury cat \$1650. MUH.	\$500
474	*	1931 Blue Boy block of 8, tone spots. Cat Jury \$4400. MUH.	\$400
475	*	1931 Blue Boy block of 4. Jury cat \$2200. MUH.	\$1,000
476	*	1931 Blue Boy block of 4. Jury cat \$2200. MUH.	\$1,000
477	U	1931 Blue Boy block of 4, Red Boy horiz pair but creased. Jury cat \$980. FU.	\$400
478	C	1931 Red & Blue Boys on commercial cover to UK, Manor Place 29 JA 32 cds. Most attractive. FU.	\$500
479	M	1931 Red & Blue Boys. Jury cat \$450. Mint.	\$300
480	U	1931 Red & Blue Boys sets x 10. FU.	\$2,000
481	M	1931 Red & Blue Boys sets x 10. Mint	\$3,000
482	M	1931 Red & Blue Boys sets x 10. Jury cat \$4500. Mint.	\$3,000
483	*	1931 Red Boy block of 4. Very faint gum discolouration 2 stamps. MUH.	\$650
484	*	1931 Red & Blue Boys. Jury cat \$1100. MUH.	\$400
485	*	1931 Red & Blue Boys. O/c. Jury cat \$1100. MUH.	\$400
486	C	1931 Red Boys x 2 (+ 3d Airmail + 1d meter mark) on airmail cover to Canada, Christchurch 9 JA 32 cds.	\$300
487	U	1932-34 blocks of 4 (1932 FDI pmk). Jury cat \$410. FU.	\$250
488	C	1932 Hygeia FDC, pmk Auckland 18 NO 32. Jury cat \$600.	\$320
489	*	1932 Hygeia x both plates 1 & 2 in blocks of 4. CP T4a, T4aw. Cat \$1160. MUH.	\$500
490	C	1933 Pathway plain FDC. Jury cat \$400.	\$220
491	*	1933 Pathway x 16, 1934 Crusader x 24. Jury cat \$2040. MUH.	\$1,000
492	*	1933 Pathway sheet of 120. Very faint gum discolouration. Jury cat \$7200. MUH.	\$2,000
493	*	1934 Crusader plate block of 20 (2 x 10). Jury cat \$1300.	\$750
494	*	1989 Princess Beatrice MUH block of 4 showing double print of black (not listed CP).	\$200
495	U	1996 40c Teddy Bear error sheet stamp. Jury cat \$2000. FU/CTO.	\$600
496	*	1996 40c Teddy Bear error sheet stamp in Enschede presentation/sample pack. Rare as such. MUH.	\$1,000
497	*	1996 40c Teddy Bear error sheet stamp. Jury cat \$1500. MUH.	\$675
498	*	1996 40c Teddy Bear error sheet stamp, with upper sheet selvage. Jury cat \$1500. MUH.	\$675
499	*	1996 40c Teddy Bear error sheet stamp, horizontal pair. Jury cat \$3000. MUH.	\$1,300
500	*	1996 40c Teddy Bear error self adhesive. Jury cat \$3250. MUH.	\$1,000

501	*	1996 40c Teddy Bear error self adhesive Jury cat \$3250. MUH.	\$1,000
502	*	1996 40c Teddy Bear self adhesive, with normal. ACS cat \$2000. MUH.	\$1,000
503	*	1996 40c Teddy Bear error self adhesive. Jury cat \$3250. MUH.	\$1,000
504	*	1996 40c Teddy Bear error self adhesive. Jury cat \$3250. MUH.	\$1,000
505	M	1996 Teddy Bear Capex m/s in Enschede presentation folder with Thailand m/s. Selvage adhered to folder. Unusual in this format. Jury cat \$10,000.	\$4,000

NEW ZEALAND - OFFICIALS

506	U	1899 5d Otira "O.P.S.O." ovpt in violet, p11, no wmk, pulled perf. CP EP13b. RPSNZ cert (2018). SG O20. GU nearly FU.	\$500
507	S	1907 ½d to 5/- Pictorials, p14 set each with "ULTRAMAR" (ie: specimen) applied in Lisbon ex UPU archives of Portugal. This is one of only 7 such sets with this h/s, as Portugal needed 7 sets for itself & colonies. Scarce.	\$2,000
508	M	1907 ½d to 5/- mint, 7 values, incl 6d Kiwi reduced. Excls 1d. Jury cat \$2000.	\$480
509	U	1907 3d - 5/- Pictorials set of 4 (5/- imperf at top). Jury cat \$850. FU.	\$400
510	*	1907 6d Kiwi reduced block of 4. ACS cat \$7200.	\$4,500
511	U	1907 5/- Mt Cook, block of 4, GU/FU with CHRISTCHURCH 4 July 1907 "C" class cancels. Cat \$2400.	\$800
512	/	1907 5/- Mt Cook x 5 stamps - 3 mint, 1 GU & 1 unused no gum. Mixed cond. Jury cat \$3000.	\$480
513	U	1908-13 2/- to £1 QVLT. Jury cat \$1375. FU.	\$750
514	M	1908 2/- to £1 QVLT. Jury cat \$2400. Mint.	\$1,000
515	U	1908 £1 QVLT, block of 4, unsurfaced paper. Wellington roller cancels. CP ZO15f. Cat \$7000. FU.	\$3,500
516	U	1908 £1 QVLT, blk of 4, FU Wellington roller cancel. Cat Jury \$4000.	\$2,000
517	U	1908 £1 QVLT FU x 5 (2 horiz pairs & single), all Wellington roller cancels. Cat Jury \$5000.	\$2,000
518	M*	1909 EVII set in blocks of 4. MUH (1/- x 2 mint, 2 MUH). Jury cat \$3070.	\$1,500
519	*	1909 EVII set, QVLT 2/-, 5/- p14, 5/- p14 x 14½. CP cat \$2615. MUH.	\$1,250
520	*	1910 EVII set of 6 to 1/-. Jury cat \$725. MUH.	\$320
521	M*	1915 GV ½d-2/-, recess & surface prints mint/MUH blocks of 4. 1/- block creased. (Recess set to 1/- all MUH). Jury cat \$5750.	\$2,000
522	*	1915 GV 3d, 6d, 2 perf pairs, blocks of 4. CP cat \$1250. MUH.	\$600
523	/	c1915 6d EVII irregular block of 32 VFU (27 July 1914); 8d invt wmk GU/FU; block of 12 GU/FU (21 December 1920) & misc odds. Cat CP \$2400+.	\$480
524	U	1915 2/- QVLT block of 15 (5 x 3), DLR, p14½ x 14. Vert crease across 5 stamps. CP ZO2h. FU.	\$750
525	*	1915 GV set to 1/-, recess & surface prints. Jury cat \$1000. MUH.	\$240
526	U	1916 4d GV violet, a huge multiple/part sheet of 98 including R4/7 retouch [ex J Bettle], also 1/- a large multiple of 32 - both GU/FU. 2 wonderful exhibition items.	\$360
527	/	1922 8d GV x 6 mint & 7 GU/FU on stockcard. (13v). Cat Jury \$3800.	\$800
528	*	1926 2/- Admiral. Jury cat \$700. MUH.	\$200
529	M	1927 1d Field Marshal, "Official" offset on back, p14 x 15. Mint. RPSNZ cert (2010). Unlisted by CP.	\$3,750
530	/	1933 5/- Arms, vert ovpt x 3 mint & 5 used. Also horiz ovpt x 1 mint & 3 used. Some toning. (12v). Jury cat \$7000.	\$800
531	U	1933 5/- Arms, vert ovpt, cds. Jury cat \$900. GU nearly FU.	\$400
532	*	1933 5/- Arms vert ovpt. Jury cat \$1200. MUH.	\$500
533	*	1933 5/- Arms, vert ovpt. Jury cat \$1200. MUH.	\$500
534	*	1933 5/- Arms, vert ovpt. Jury cat \$1200. MUH.	\$500
535	*	1935 Pictorials set. Jury cat \$950. MUH.	\$280
536	C	1938 2½d Lilies FDC, pmk Hastings 26 JL 38. Perf 14 line. CP cat \$500.	\$200
537	*	1940 9d Centennial complete sheet of 120. Jury cat \$2400. MUH.	\$1,200

538	*	1942 1/- Tui plate A1 block of 4, p12½. CP LO12c. Cat \$600. MUH.	\$300
539	*	1954-63 QEII 14 plate blocks of 6, every value excl 2½d & 2½d ovpt. Incl both paper 1d, 2d, 3d & 2 PBs of 3/- plus 3 PBs of 4. 1½d PB has minor tone spots on reverse. CP cat \$2375 (PBs of 6). MUH.	\$800

NEW ZEALAND - LIFE INSURANCE

540	/	1891-1989 Stamp & Postal History colln exhibit. Specialised study on 45 pages incl VR 1d die proof in green, VR set used with 3d in strip of 3. VR good range of perf & wmk varieties, VR period covers x 8, no VR 6d plate proof pair, 1d blue no VR strip of 4 used. CP 8b with cert. Official stamp usage period covers (x 3), no VR period covers x 8, good range of stamps & covers, also 1981 dry print blocks of 4 of 20c, 30c. Cond generally fine. Attractively presented.	\$5,000
541	M*	1891 2d chestnut VR mint/MUH block of 4 (2 muh). Jury cat \$1520.	\$1,000
542	U	1891 3d brown VR vert block of 6. Rare multiple. CP cat \$720. FU.	\$500
543	M*	1891 3d brown VR block of 4. Jury cat \$5900. Mint/MUH.	\$4,000
544	U	1891 6d, 1/- VR horiz pairs. Jury cat \$1500. FU.	\$975
545	M	1891 6d green VR. Jury cat \$1100. Mint.	\$500
546	U	1891 1/- rose VR interpanneau pair. Rare in this format. Jury cat \$1000. FU.	\$750
547	M	1891 1/- rose VR, centred to left, 1 short perf. Jury cat \$1850. Mint.	\$500
548	U	1891 VR set (+ extra 2d) horiz pairs. Jury cat \$1700+. GU/FU.	\$600
549	M	1891 VR set. Jury cat \$4400. Mint.	\$2,500
550	M	1891 VR set to 1/- excl 3d. 1/- minor ageing. Jury cat \$3300. 1d, 6d no gum. Mint.	\$800
551	U	1891 VR set. Jury cat \$850. FU/VFU.	\$500
552	M*	1897-8 1d blue VR, p11, vert block of 6, 2 stamps variety double perfs (2 toned perfs). CP X2f/z. Cat \$1500+. Mint/MUH.	\$400
553	M*	1905 1d blue no VR mint/MUH horiz block of 8 (4 MUH), 2 stamps creased. Jury cat \$12000. Rare large multiple.	\$6,000
554	M*	1905 1d blue no VR block of 4, 3 stamps creased. Jury cat \$5000. Mint/MUH.	\$1,750
555	*	1905 1d blue no VR MUH block of 4, top 2 selvedge stamps creased. Jury cat \$7000.	\$3,000
556	*	1905 1d blue no VR, faint gum crease. Jury cat \$1750. MUH.	\$750
557	U	1905 2d chestnut no VR, a superb used horiz block of 6, except lower middle stamp damaged. Exbn piece. Cat \$2100 (as 6 singles!)	\$1,200
558	U	1905 2d chestnut no VR, horiz pair. Jury cat \$700. FU.	\$450
559	M	1905 2d chestnut, no VR. Usual uneven perfs. Jury cat \$5500. Mint.	\$3,000
560	M	1905 2d chestnut no VR. Jury cat \$5500. Mint.	\$3,000
561	M	1905 2d chestnut, no VR. Mint (hint of horiz crease at foot?) Jury cat \$5500.	\$1,400
562	M	1905 2d chestnut, no VR. Tone spots. Mint. CP cat \$5500.	\$600
563	M	1905 2d chestnut no VR. Jury cat \$5500. Mint.	\$3,000
564	*	1913 ½d, 1d, 1½d brown, 2d yellow, 3d chocolate, 6d pink, complete sheets of 120. Jury cat \$17720. MUH.	\$3,250
565	*	1944-47 ½d, 1d red, 1½d brown, 2d yellow, 6d complete sheets of 120, WT, p14 x 15 (the last issues). (Some toning 2d, occasional on 6d). Jury cat \$12720. MUH.	\$3,000
566	P	1947 1d Tairaoa vert imperf proof pair.	\$200
567	M*	1947-81 Colln mint/MUH incl blocks/plate blocks etc. Plus sheet of 2005 \$1.35 Sesqui (6d Life Ins) (FV \$33.75). Jury cat approx \$1200.	\$400

NEW ZEALAND - POSTAL FISCALS

568	/	1882-1931 Small range of mostly mint. QVLT: 7/6d fiscally used, 9/- mint (regummed), 10/- mint, £1 mint (tone spot). Arms: 1931 30/- mint (tone spot), £2 MUH, £3 GU, 5/- Official MUH, 1967 set MUH. Jury cat \$3900+.	\$750
-----	---	---	-------

QV Long Types

569	C	1867 1d QVLT Die I, blue & red, imperf (4 margins) on small neat cover to Wanganui, bearing 5 July 1897 Wanganui, index 3 "F" class arrival cancel on cover, 6 July Wanganui index 2 "F" class cancel tying stamp to cover, TO PAY / 2d / DOUBLE DEFICIENT POSTAGE h/s in black. Rear appears to have had a notice (re postage deficiency?) affixed but since removed. QVLT stamp valid for postage until 1913, but postage underpaid by 1d + 1d fine, hence applied h/s.	\$250
570	R	1867 2/- orange-red & deep blue die I "H" roulette 14 at sides, imperf top & bottom. NZ impressed monogram. 5/8/67 "BFS(?)" m/s cancel. RPSNZ cert (2018). Kiwi R259r. Cat \$650.	\$500
571	U	1882 8d postally used (1886), RPSNZ cert 1988, scarce item. SG F7. ACS cat \$1500. FU.	\$750
572	M	1882-1925 complete 2/- to 9/- (excl 3/-, 4/-, 7/6d). Jury cat \$4350. Mint.	\$2,000
573	M	1882-1925 £1 rose. Jury cat \$1000. Mint.	\$500

Arms

574	U	c1931-56 Specialised used colln on pages to £5 incl all values (except 35/-) plus Surcharges to 35/-. Nearly all above 7/- fiscal, however noted: 7/6d, 30/-, £3 all FU & £4 GU. Also £400 QVLT horiz pair fine fiscal cds.	\$1,000
575	M	1931-67 Mint colln on pgs identified by SG No's. Noted: Cowan set to £1; WT mult 7/-, 7/6d, 9/-, 10/-, 15/-, £1; Surcharges short set to 22/- (incl 3/6d sans serif).	\$1,000
576	M	1931-56 1/3d lemon, 1/3d blue letters, 2/6d-10/-, 15/-, £1, 3/6d ovpt x 2 incl sans serif, 5/6d ovpt. Jury cat \$1977. Mint/MUH.	\$600
577	M	1931-56 1/3d to £1, incl 1/3d lemon, 1/3d blue lettering. (16v). Mint.	\$700
578	M	1931-56 complete simplified, to £1. Jury cat \$1500. Mint.	\$700
579	*	1931-56 set 1/3d (all 4 diff types) to £1 (excl 6/-, 8/- & 12/6d), then £2. Jury cat \$1800. MUH.	\$1,000
580	M	1931-56 25/-, 30/-. Jury cat \$1300. Mint.	\$600
581	M	1931-56 £2.10, £3, £4, £5 (VLH). Jury cat \$1800. Mint.	\$900
582	M	1931-56 £2.10. Cat \$700. Mint.	\$500
583	M	1932-52 £2.10, £3, £4, £5 (£2.10 Cowan, £3, £5 WT mult upright wmk, £4 WT mult invt wmk). CP Z47a, Z48c, Z50b, Z52c. Cat \$1925. Mint	\$1,000
584	*	1931-56 £3.10, light brown gum. Jury cat \$7000. MUH.	\$1,500
585	*	1935 12/6d deep plum, Cowan paper. CP Z40a. Cat \$850. MUH.	\$400
586	M	1935 £4.10. Jury cat \$4500. Mint.	\$2,750
587	M*	1939 3/6d to 35/- Surcharges, mint (22/-, 35/- MUH), 3/6d is sans serif. Jury cat \$2845.	\$1,500
588	M	1939 3/6d - 35/- ovpts set incl sans serif 3/6d (35/- part gum). Jury cat \$2225. Mint.	\$750
589	*	1939-50 ovpts: 3/6d (sans serif), 5/6d, 11/-, 22/- & 35/-. Jury cat \$3125. MUH.	\$1,600
590	U	1939 35/- on 35/- . Jury cat \$1000. FU.	\$500
591	*	1939 35/- on 35/- . Jury cat \$1600. MUH.	\$800
592	M	1939 Surcharges set (both 3/6d) to 35/-. Jury cat \$2225. Mint.	\$1,200
593	M	1939 £20 ovpt. ACS cat \$2000. Mint.	\$1,000
594	*	1945 22/- on 22/- scarlet, WT mult upright wmk. CP Z56b. Cat \$900. MUH.	\$400
595	*	1946 25/-, WT mult upright wmk. CP Z43b. Cat \$1500. MUH.	\$800
596	*	1948 £3.10 with LH selvedge, WT paper, mult upright wmk. CP Z49b. Cat \$8000. MUH.	\$4,000
597	*	1952 £2 purple, WT mult invt wmk. CP Z46d. Cat \$450. MUH.	\$220
598	*	1952 £3 green, WT mult invt wmk. CP Z48d. Cat \$525. MUH.	\$240
599	*	1952 £4 light blue, WT mult invt wmk. CP Z50b. Cat \$600. MUH.	\$280

NEW ZEALAND - OTHER

600	*	Auckland Isl 1915 General Grant Expedition sheet of 12 (no selvedge as usual). ACS cat \$900. MUH.	\$600
601		1895 ½d Express Freighter, NZ Express Company, Campbell & Crust. VF MUH. Rare thus.	\$250
602	*	1903-39 Express Delivery Fernleaves x 5 diff printings/perfs, 1939 Car. Cat \$1200. MUH.	\$400
603	/	1903-39 Express Delivery 6d: a) Fernleaves x 7 mint, 58 used, 1 presentation example, 1 imperf single, 1 plate proof in blue (imperf), 1 SPECIMEN (multiple ovpt); b) Car x 8. Variable cond. Cat Jury \$5600.	\$800
604	M*	1926-39 Express Delivery Fernleaves x 2, Cowan p14 x 14½, WT p14 x 15, both mint. Also Motorcar x 12 MUH. CP U1b, U1e, U2a. Cat \$250.	\$100
605	C	1939 6d Express Delivery Motorcar FDC, pmk Wanganui 16 AU 39. Jury cat \$600.	\$220

NEW ZEALAND - REVENUES

606	R	2/6d Honey Seal, brown, cracked wax on surface, & surface scuff, used. Scarce. Kiwi R132. Cat \$175.	\$100
607	R	Selection on 9 pages incl 2 x 1% Ad Valorem; Beer Duties x 6 diff (6d, 1/-, 2/6d 7/-, 9/-, 13/-); 4d QVLT Die 1. telegraph cancel; & 3d brown NZ Railways Newspaper. Mixed cond. Also Wages Tax book with range of Social Security stamps.	\$1,000
608	R	Assortment of 14 legal documents (Deeds, Indentions, Mortgages etc) + 2 Wage Tax books plus some loose.	\$250

NEW ZEALAND - POSTAGE DUES

609	/	1899-1939 mint/used, singles/multiples: 1899s incl 10d x 5 mint, 1 used; 1/- x 8 mint, 5 used; 2/- x 7 mint. (170v). Also a few 1935 Airs on first page. Variable condition. Cat \$15,000+.	\$2,400
610	*	1899 3d with upper selvedge, letter "E" wmk, with additional row of perfs (p14¼) 1mm below sheet edge. Hinged on selvedge.	\$150
611	U	1899 5d, 6d, blocks of 4 (pmk 1900, 1903). Scarce multiples. FU.	\$750
612	U	1899-1939 complete. Jury cat \$1900. FU.	\$1,000
613	U	1899 1/- lower right interpanneau corner block of 4. Rare multiple. Pmk Wellington FEB 19 09. Jury cat \$1400. FU.	\$1,000
614	M	1899 set mint to 2/- (1/- faint tone, 2/- pulled perf). Jury cat \$1400.	\$600
615	/	1899-1939 sets mint plus a few used blocks of 4 (2 blocks of 6), 1899, 1902 issues on 6 pages. CP cat \$3100.	\$1,250
616	M*	1899 set of 14 (incl ½d, 1d, 2d variants). Also 1939 & 1949 sets. 8d, 1/- VLH mint, rest MUH. CP \$2,500+.	\$680
617	*	1902 simplified set blocks of 4. Jury cat \$700. MUH.	\$475
618	C	1939 1d 3rd Type on 8 inwards covers: 1d x 3, 2d x 3 (incl 1945 Fanning Island underpaid censored cover), 6d x 1 & 2/6d x 1 (1947 overweight air cover from Scotland - 10 postage dues on front & 20 on rear!) Variable condition.	\$500
619	C	1939 set of 4 FDC, Auckland 16 AUG cds. Jury cat \$650.	\$200
620	/	1939 Simplified set in MUH blocks of 4 & FU in block of 4. Jury cat \$402.	\$250

POLAR

621	M*	1908-82 colln on 15 pages. Noted 1908 King Edward VII Land FU block of 4 (faint toning); 1d Victoria Land x 5 mint/MUH block of 4 & MUH single, 1 FU on certificate; 1967-82 Ross Dep colln; 1967 Pictorials set as plate blocks of 4. Jury cat \$2884.	\$1,250
622	/	Autograph Book c1913-6 incl 1913 ½d Victoria Land stamp used, & 1d (unused). Signatures incl Edward L Aitkinson (in command at Cape Evans during Scott's 1912 Expdn, Diana Wilson (widow of Edward Wilson who died with Scott in 1912) + 8 other contemporary with maritime theme. All signatures with messages.	\$1,200
623	U	King Edward VII Land 1908 block of 4 with part arrow in selvedge. Jury cat \$500. FU.	\$300
624	M*	King Edward VII Land 1908 block of 4 (2 stamps very L/H). Jury cat \$5000. Mint/MUH.	\$2,750

625	/	Victoria Land 1911-3 ½d & 1d. MUH. King Edward VII Land 1908 VFU. Jury cat \$2850.	\$1,250
626	M*	Victoria Land 1911-13 ½d, 1d blocks of 4. ½d no gum; 1d MUH. (1 1d stamp deformed "A" in "VICTORIA"). Jury cat \$7900.	\$2,500
627	*	Victoria Land 1911 1d block of 4, 2 stamps show deformed "L". MUH.	\$500
628	M*	Victoria Land 1911-3 set in horiz pairs. Jury cat \$3950. Mint (1d MUH).	\$2,000
629	*	Victoria Land 1913 ½d, centred to left. Jury cat \$2500. MUH.	\$800

AUSTRALIA

630	M	NSW 1897 2½d (2/6d) Diamond Jubilee Hospital Charity, multicoloured. SG 281. Cat £250. Mint. Ex Lovis.	\$225
631	M	South Australia 1866 "TEN PENCE" ovpt in blue on 9d orange-red (1st issue), rouletted. SG 35. Cat £600. LH mint. Ex Lovis.	\$450
632	S	South Australia 1886-96 2/6d - £20 QVLT set of 14 "SPECIMEN" ovpts (except 2/6d postally used), 5/- minor faults. SG 195, 196s-208s. Cat £1400.	\$750
633	U	South Australia c1913-90s pmks colln - on pgs (mainly Roos & GV heads). Plus maybe 500 diff offices mainly more modern. These are mostly on piece & mounted on cards with multi examples of each office.	\$275
634	U	Tasmania 1853 1d QV "VAN DIEMENS LAND", pale blue, early state, imperf 3 margins. Cancelled clear "64" obliterator of Hobart. SG 1. Cat £1500. GU/FU. Ex Lovis.	\$450
635	U	Tasmania 1853 1d QV "VAN DIEMENS LAND", blue, early state, imperf, 4 margins, cancelled "59" obliterator of Launceston. SG 2. Cat £1500. GU/FU. Ex Lovis.	\$600
636	U	Tasmania 1853 1d QV "VAN DIEMENS LAND", pale blue, worn plate, imperf, 4 margins. SG 3. Cat £1300. FU. Ex Lovis.	\$550
637	U	Tasmania 1853 4d QV "VAN DIEMENS LAND", imperf. Fine reference set of 8 SG-listed states/shades on stockcard. All 4 margins, cut square. SG 6 creased but with one third of next stamp at top. SG 5-12 cat £4850. Also 2 diff defaced reprints in pale brown, c1950 (10 items). GU/FU.	\$2,250
638	U	Tasmania 1853 4d QV "VAN DIEMENS LAND", pale orange, imperf. Horiz pair, cut square, both 4 margins. Cancelled "59" obliterator of Launceston, scarce as pair SG 7. Cat £850. FU. Ex Lovis.	\$500
639	U	Tasmania 1853 4d QV "VAN DIEMENS LAND", imperf, range of 6 diff, all cut square, 4 margins: Plate 1 SG 5, 7, 9; Plate 2 SG 10, 11, 12. SG cat £3100. GU/FU. Ex Lovis.	\$1,500
640	M	Tasmania 1853 4d QV "VAN DIEMENS LAND" yellowish-orange, imperf, cut square, 4 margins, closed tear, attractive appearance. SG 12. Cat £7000. Unused no gum.	\$750
641	M	Tasmania 1858 6d dull lilac, wmk double-lined "6", imperf, 4 margins. SG 40 cat £1500. Also imperf reprint in black on wove paper. Ex Lovis.	\$800
642	U	Tasmania 1858 1/- vermilion, wmk double-lined "12", imperf. Horiz block of 10, each stamp with faint manuscript (fiscal?) cancel. Good margins. Folded horiz between the 2 rows. Large blocks of this size are rare. Previously sold Prestige 2009 for A\$515. Ex Lovis.	\$450
643	M	Tasmania 1858 1/- vermilion, wmk double-lined "12", imperf. Three strongly contrasting shades. All 4 margins (1 stamp cut just to frame on 1 side). SG 41. Cat £2400. Mint (2), unused (1). Ex Lovis.	\$1,250
644	M	Tasmania 1858 1/- vermilion, wmk double-lined "12", imperf. Two contrasting shades: vermilion (4 margins, unused), pale vermilion (4 margins but cut close on 2 sides, mint). Also imperf reprint in black on wove paper. SG 41. Cat £1600. Ex Lovis.	\$750
645	U	Tasmania 1860-7 6d QV, wmk double-lined "6", imperf. Set of 6 SG-listed colours, all 4 margins. Useful reference. SG 44-49. Cat £655. FU. Ex Lovis.	\$400
646	M	Tasmania 1860 6d QV; dull slate-grey, wmk double-lined "6", imperf. Horiz pair (1 4 margins, 1 slightly cut into on right side). Unused. SG 44. Cat £1900. Ex Lovis.	\$800
647	M	Tasmania 1860 6d QV imperf, wmk double-lined "6". Three very distinct shades, stated to be SG 44, 45, 46, though SG does not price SG 45 mint. All 4 margins. Unused. SG cat approx £2650. Ex Lovis.	\$1,250
648	M	Tasmania 1863-67 1d QV "VAN DIEMENS LAND", wmk double-lined "1", imperf 4 margins. Three SG-listed shades: SG 27 brick-red, SG 28 dull vermilion, SG 29 carmine (touching 1 corner). SG cat £1425. Unused. Ex Lovis.	\$700
649	M	Tasmania 1864 1d dull vermilion & 1/- vermilion, wmk double-lined numerals, p12½. Unused no gum. SG 81, 90. Cat £1070. Ex Lovis.	\$200

650	M	Tasmania 1865 6d reddish-mauve, wmk double-lined "6", p12. Horiz pair & single. Slightly diff shades. SG 76. Cat £570. Mint. Ex Lovis.	\$325
651	M	Tasmania 1891 2½d on 9d pale blue, p11½. Variety surcharge doubled, 1 invtd. With interpanneau selvedge at left (with bonus of a second invt ovpt on the selvedge). Small "T.A." guarantee h/s on back. SG 168a. Cat £700. Mint. Ex Lovis.	\$500
652	M	Victoria 1901 £1 EVII carmine-rose, wmk V over crown sideways, p12½. SG 399. Cat £350. Mint. Ex Lovis.	\$300
653	U	Western Australia 1854 1d Swan black, imperf, 4 margins (close at bottom, wide at top with part of next stamp). SG 1. Cat £300. VFU. Ex Lovis.	\$250
654	M	Western Australia 1854 4d Swan pale blue, imperf, 4 margins (huge at top). Unused. SG 3. Cat £375. Ex Lovis.	\$275
655	M	Western Australia 1854 4d Swan blue, imperf, 4 margins. Unused. SG 3a. Cat \$450. Ex Lovis.	\$325
656	M	Western Australia 1854 1/- Swan deep red-brown, imperf, 4 margins. Small paper inclusion. SG 4a. Cat £2000. Unused. Ex Lovis.	\$1,250
657	M	Western Australia 1855 1/- Swan grey-brown, imperf, 4 margins. Light violet guarantee h/s on back. SG 4b. Cat £700. Unused. Ex Lovis.	\$500
658	M	Western Australia 1855 1/- Swan pale brown, imperf, 4 margins. SG 4c. Cat £500. Unused. Ex Lovis.	\$350
659	U	Western Australia 1857 6d Swan black-bronze, imperf, 3 good margins, just touching frame on 4th side. Good margins are rare on these stamps. 2012 RPSV cert. SG 18. Cat £650. VFU. Ex Lovis.	\$500
660	U	Western Australia 1858 2d Swan brown-black on red, imperf, 4 close margins (full margins are rare on this stamp). Variety printed both sides (image on back upright). Light horiz crease. VFU cancel. Alcuri 1985 cert. SG 15a. Cat £800. Ex Lovis.	\$450
661	U	Western Australia 1858 2d Swan brown-black on red, imperf, 3 margins (2 close), cut slightly into design on 4th side. Image on back inverted. SG 15a. Cat £800. FU. Ex Lovis.	\$500
662	U	Western Australia 1859 6d Swan grey-black, imperf, 4 margins (3 are wide for this stamp). Dienna 1987 cert. SG 19. Cat £550. FU. Ex Lovis.	\$450
663	U	1913 £1 Roo brown & ultramarine, 1st wmk. AP 24 13 cds. SG 15. Cat £2500. FU.	\$2,000
664	M	1915-28 2/- Roo, punctured small "OS", invtd narrow crown wmk. Very minor gum tone around 1 puncture hole & tiny back thin. SG O49w. Mint.	\$2,000
665	M	1932 Sydney Harbour Bridge set of 4 (incl 2d typo). Cat £425. LH mint.	\$400
666	U	1934 £2 Roo, C of A wmk, part (Tennant) Creek cds. SG 138. Cat £600. GU/FU.	\$400
667	M	1935 £1 Roo grey, C of A wmk. SG 137. Cat £650. Mint.	\$500

PACIFIC ISLANDS

668	C	Aitutaki & Tokelau 1911-29 x 4 unusual covers: (a) 1911 Regd cover Aitutaki to Bremen, regn label no. 27 canc violet undated Aitutaki cds. Franked 3 x 2½d (SG 4), 2 x 3d (SG 5), 2 x 6d (SG 6, both imperf at top variety), 2 x 1/- (SG 7b). Aitutaki black cds AU 19 11. (b) 1914 ditto cover, regn label no. 93 canc violet Aitutaki straight line. Franked ½d (SG 9), 2½d (SG 4, diff shade), 3d (SG 5), 6d (SG 5 diff shade), 1/- (SG 7). Aitutaki violet cds JA ?? 14. Various backstamps on (a) & (b). (c) Atafu Isl (Tokelau) violet canc 'Gilbert & Ellice Isl Colony' undated on EVII 2½d addressed Samoa. (d) Fakaofu, Union Isl cds 18 MY 29 on 2 x GV ½d ovpt Samoa. Addressed to NZ.	\$800
669	*	Aitutaki 1917 1½d GV slate, complete sheet of 240, several small selvedge creases & perf separations. SG 21. Cat £1140. MUH.	\$600
670	*	Aitutaki 1919 1½d GV orange-brown complete sheet of 240, folded in 4 which has caused creasing 1 column of 10 & minor gum tone affects about 20 stamps. SG 22. Cat £192. MUH.	\$100
671	*	Aitutaki 1919 3d GV surface print left side of sheet - 120 stamps. SG 23. Cat £420. MUH.	\$375
672	*	Aitutaki 1920 ½d GV right half of sheet - 120 stamps. SG 19. Cat £120. MUH.	\$85
673	*	Aitutaki 1924 1d Wharf complete sheet of 60, incl all 3 double derrick flaws, wmk paper. SG 31a. Cat £390. MUH.	\$300
674	*	Aitutaki 1927 2½d Chief, complete sheet of 60 (10 x 6), minor tropicalised gum mostly on selvedge. SG 32. Cat £450. MUH.	\$225

MOST LOTS ILLUSTRATED ON-LINE AT WWW.MOWBRAYCOLLECTABLES.COM

675	M*	British Pacific various islands, incl useful early ovpts on NZ, eg Cooks GV 2 perf blocks to 6d but toning. Also noted: British Solomons GVI set mint, Niue SG 22 MUH, 1942-45 high value ovpts mint, Penrhyn near complete, Samoa high val ovpts incl SG 170 mint, 1932 ovpts mint etc. c400 stamps. Mint/MUH.	\$500
676	*	Cook Isl 1902 2½ Queen Makea deep blue, complete sheet of 120 as 2 panes joined by interpanneau selvedge, p11, wmk sideways invt NZ & star close together. Tone spots on gum affect about 10%, several just to front. SG 32. Cat £450. MUH.	\$300
677	*	Cook Isl 1902 6d Tern purple, complete sheet of 60, p11, wmk invt NZ & star close together. Minor tone affects about 50% & shows to front in several places, mostly on selvedge. SG 34. Cat £2280. MUH.	\$600
678	*	Cook Isl 1911 ½d Tern green, complete sheet of 60, p14½ x 14, wmk invt NZ & star close together. Tone spots on gum affect about 30%. SG 37. Cat £780. MUH.	\$175
679	*	Cook Isl 1913 1d Queen Makea, complete sheet of 120 (12 x 10), p14, chalk surfaced paper. Very light toning overall. SG 40. Cat £1560. MUH.	\$500
680	*	Cook Isl 1919 ½d, 1½d, 2d, 3d GV Surface set as complete sheets of 240 (½d, 1½d & 3d divided as 2 panes of 120. Minor gum tone affects all, slightly heavier on a few stamps. SG 56-59. Cat £1356. MUH.	\$400
681	*	Cook Isl 1924 1d Wharf, complete sheet of 60, incl all 3 double derrick flaws, wmk paper. Minor selvedge crinkle. SG 82a. Cat £390. MUH.	\$300
682	*	Cook Isl 1927 2½d Chief, complete sheet of 60 (10 x 6). Tropicalised gum on selvedge. SG 83. Cat £780. MUH.	\$250
683	*	Cook Isl 1927 4d Harbour, complete sheet of 60. SG 84. Cat £1260. MUH.	\$500
684	*	Cook Isl 1932 4d Pictorial, no wmk, upper left sheet corner blk of 24 (4 x 6) MUH with compound perfs 14 & 13: selvedge, p13, column 1 p14, column 2 p13, column 3 p14 & column 4 p13. This piece contradicts info in PSNZ Vol V & in SG that state [compound perf 13] "from the 3rd or 4th vert column with 13 at left or right". A superb fresh MUH exbn item.	\$1,250
685	*	Cook Isl 1938 1/- GVI complete sheet of 80, wmk paper, light tropicalised gum. SG 127. Cat £720. MUH.	\$250
686	*	Cook Isl 1943 5/- Arms, complete sheet of 80 (10 x 8), Wiggins Teape mult upright wmk paper, light gum tone, 1 central fold. SG 132. Cat £1520. MUH.	\$375
687	*	Cook Isl 1944 4d Port of Avarua complete sheet of 80 (10 x 8), mult wmk, minor tropicalised gum. SG 141. Cat £480. MUH.	\$150
688	U	Cook Isl 1944 6d Ship, complete sheet of 80 (10 x 8), mult wmk, minor tropicalised gum. SG 142. Cat £400. MUH.	\$135
689	/	Fiji 1876-77 VR Sydney ovpt. Accum in small s/b. 1d MNG x 25, used (mainly pen cancels) x 120+. 6d MNG x 1, used (mainly pen cancels) x 60+, incl blk of 6 & of 4. 4d on 3d used x 4, both papers, also 2nds. Ex missionary. Also Monograph Rodger J, Postal History of Fiji; 1876-1910 - which lists many rural postmasters (who often used initials as pen cancels). SG 28, 30, 31, 33, 34. Cat c£10000.	\$1,750
690	C	Gilbert & Ellice Isl 1911-1944 7 covers: 1) long OHMS regd cover to France (vert fold & tear), franked EVII 5d & 1/- ovpt FU, canc 2 strikes Ocean Isl double ring cds JY 15 11, G&E reg label. Stated to be earliest known usage of such label. 2) 1922 3 x R covers (Ocean Isl) to Samoa with GV set to 5/- & 1d War Tax canc double circle G&E Isl colony cds JA 17 22, Apia receiving mark 15 FE 22. 3) Silver Jubilee set on R cover. 4) GVII set to 5/- on regd cover to Fiji, handwritten reg Tarawa double circle G&E Isl Colony, Tarawa, PO Tara cancels undated receiving b/s Suva. Also regd cover Canter Isl with GVI to 2/-.	\$750
691	M	Gilbert & Ellice Isl 1924 10/- & £1 GV, VLH. SG 24 & 35. Cat £710. Mint.	\$600
692	U	New Guinea 1916 £1 Roo "NW Pacific Islands" (birds)ovpt (type c) narrow crown wmk, FU part double rimmed oval RABAUL cancel in purple ink. A few trimmed perfs at foot. SG 99. Cat £450.	\$325
693	C	Niue 1967 illustrated (long) NZPO FDC of decimal currency 1c to \$2 defins with Niue pictorial cancel. Extremely scarce cover.	\$500
694	*	Penrhyn 1902 ½d Mt Cook, Cowan paper, p14, pane of 60 (6 x 10) (as divided for overprinting). Minor gum creasing & tone spots affect approx 10%. SG 9. Cat £285. MUH.	\$160
695	*	Penrhyn 1902 2½d Wakatipu, right half sheet of 60 (5 x 12) with lower selvedge only, incl column 8 (12 stamps) "½" & "P" widely spaced. Toning affects approx 8 stamps (incl 1 from column 8). SG 1a. Cat £1080. MUH.	\$425
696	*	Penrhyn 1927 2½d Chief, complete set of 60 (10 x 6), minor tropicalised gum on selvedge. SG 40. Cat £1140. MUH.	\$400
697	*	Penrhyn 1928 1d Wharf complete sheet of 60, wmk paper, incl the 3 double derrick flaws (R2/8, R3/6, R5/2). SG 39a. Cat £360. MUH.	\$275
698	*	Penrhyn 1929 ½d Cook Landing complete sheet of 60, wmk paper. SG 38. Cat £330. MUH.	\$250

699	U	Samoa 1877 1d Express ultramarine state I (R4/2) (incl dot after "Y" of "PENNY"), p12½, imperf at base. "5/10/77" m/s cancel, earlier than earliest recorded in survey by Odenweller. SG 1. Used.	\$750
700	C	Samoa 1916 ½d on 5pf + ½d on 5pf GRI ovpt postal stationery postcard & reply portion (joined). Unused. Cat Ascher 330 Dm (1996). H & G no 3.	\$300
701		Samoa 1935 Pictorial colour trials: a) single colour (frame only) ½d, 2/-, 3/- x 1 each & 1/- x 4 diff; b) bi-colour (frame & centre) ½d x 3, 2½d x 22, 1/- x 19, 2/- x 16 & 3/- x 18, 25v on 4 Hagners, all diff.	\$1,500
702	M	Samoa 1935 £10 Arms, Cowan. Only 800 stamps printed. Unlisted by SG. Mint.	\$640
703	M	Samoa 1935 £10 Arms, Cowan. Unlisted by SG. Mint.	\$640

GREAT BRITAIN

704	C	1683-1809 x 6 early covers: 1683 London to Lilla (France), no postal markings; 3 Bishop marks; London 1746; London to Edinburgh 1765; Castle Douglas to Edinburgh 1809; Dockwra indistinct cancel: 1750 Doncaster 2 line h/s.	\$400
705	C	1708-1854 International Mail x 11 items. Outwards: 1708 London to Amsterdam, red manuscript X; 1836 Leith to Bordeaux inc oval P-F h/s; 1/9d rate; 1839 Kent to Paris, Maidstone Penny Post '8' & '10' rates; 1843 London to Bordeaux '10' rate; 1854 London to Calais '8' rate. Inward: 1817 Paris to London; 1831 Rotterdam to London Ship letter Queensboro h/s; 1822 to London '1/2' rate origin unknown; 1853 New Orleans to London '3/2' rate, Liverpool Ship letter h/s; 1839 Buffalo to London '1/7' rate, Liverpool Ship letter h/s; 1843 India to London. 'New Romney, India Letter' h/s, '8' rate.	\$600
706	C	1785-1837 x 6 'Free' frank covers: 1785 Bishop mark & SGaA2 type; 1794 Tetsworth straight line & SG1A6 type; 1801 SG1A9 type; 1803 Unpaid Paid Stoke Newington h/s SG1A9 type; 1833 & 1837 SG1A11 type.	\$250
707	C	1790s-1847 over 60 pre-stamp covers/entires. Numerous diff h/s etc, Mileage marks; Bishop marks; Add ½c, Post Paid; Penny Postage; Penny Unpaid; Too Late; 5th Clause Post; TP rate 2d; concave, convex & scroll pmks; various rates & altered rates.	\$1,600
708	C	1797-1811 Unusual/unlisted pmks: (a) 1797 Greetham to Lichfield, GREETHAM straight line cancel (unlisted by SG); (b) 1802 Liverpool to London with oversize '206 Liverpool AUG 9 1802' in half circle; (c) 1809 London to Norwich, 809 circular h/s & double boxed 'Temple' h/s (unlisted by SG), 'P' rate; (d) 1811 London St Mary b'ts 2py P. Paid straight line h/s + oval Night 2d P.Paid.	\$600
709	C	1809-39 Unusual postal rates x 7 items: (a) 1809 entire Kircaldy to Edinburgh '1/3' rate; 1817 Boston to London '9' rate; (c) ? to Glasgow '1/2' rate, (d) 1823 Inverness to London '1/4' rate plus ½d; (e) 1823 Lockerby to Edinburgh '8½' rate; (f) 1830 London to Edinburgh '2/2' rate, plus ½d; (g) 1839 London to Edinburgh '2/-' rate plus '2½'.	\$375
710	C	1812 Letter Liverpool to Rhode Isl USA. Sent during war between GB & USA. '12' postal rate, part SHIP MAIL h/s, Rhode Isl receiving stamp Oct 5. Printed letter newsheet dated 15 Aug 1812 describing effects of war on shipping & discussing Wellington's campaign on Portugal. Historical document.	\$200
711	C	1826-40 local delivery & coffee houses x 5 covers: 2 x Lincolnshire, manuscript '9' normal postage & '1' for local delivery; 1838 Deal to Wingham, '7' amended to '8' to incl 1d local delivery; 1839 to Ship Inn Lytham, '8' with Newton Penny Post b/s; 1840 London re-addressed to Coffee House with "Thames St 1 py P.Paid" h/s.	\$250
712	C	1839-1840 First & last day of 4d post. Letter h/s '4' Glasgow to Edinburgh dated 5 Dec 1839, b/s 6 Dec (2nd day of issue). Letter Liverpool to Halifax. Manuscript 4, boxed "PAID Liverpool"; b/s 9 Jan 1840 (last day).	\$500
713	C	1840 First day of 1d post. Wrapper from Keighley to Oxford manuscript "1", pmk Oxford JA 10 1840 (1st day). Also envelope (minor tears) London, pmk 6 May 1840 & h/s 'PAID 1d', b/s 5 May (last day before introduction of postage stamps).	\$1,000
714	U	1840 1d Blacks x 15 used. Comprising the three shades SG 1-3, plates 1-11, & 3 matched pairs with 1d reds (plates 2, 5 & 9). All 3 to 4 margins, GU-FU pmks. Plates 10, 11 thinned. Nice lot. Cat £12500.	\$4,000
715	C	1840 1d Black cover, EF, 3 margins, plate 7, red MC cancel, back stamped. Beverley De 5 1840.	\$325
716	U	1840 1d Black, 2d Blue x 3, all the 6 SG concise listed shades. 1d Blacks all 4 margins, nice red MC cancels FU, 2d Blues all about 4 margins minor faults SG 4 & 6 black MC cancels, (SG 5 red). SG 1-6. Cat £4850. GU/FU.	\$1,500
717	U	1840 1d Blacks x 3: IK 4 margins, plate 5 red MC cancel, pin prick plus 2 x 3 margin examples.	\$325
718	U	1840 2d Blue, imperf 4 good to large margins, black MC, small thin on back (behind CE of PENCE), otherwise fine. SG Cat £900. FU.	\$300
719	U	1840 2d blue x 7 GU/FU. All 3 to 4 margins (1 thinned, 1 creased). Plus 13 x 1841 2d, all 3-4 margins. SG cat £7470.	\$3,000

720	/	1841- c1870s 46 covers and 18 stamps/pieces. Mainly 1d plate nos issue incl 8 GB-overseas covers (incl 4 multiple, incl 6d surface printed small letters), 2 unusual usages, 3 multiple rates, 7 London duplex, 3 England & Wales, 6 Scotland, 3 Ireland covers. Cover showing Azenar experimental cancel. Also piece used overseas in Gibraltar 2 x 1d, 1 x 6d, chestnut. 3 x diff Cyprus ovpts on 1d mint. 2 x double perfs (1 on piece), triple perf, misplaced perfs etc.	\$1,200
721	/	1841 1d red imperf x 18 FU, 3 mint. SG 8-12 range. 3 to 4 margins. Cat £2430.	\$1,000
722	U	1841 1d red-brown imperf, paper more or less blued, range of 586 in 4 old circuit books. Noted many FU & many strongly blued. Cat min of £18000+. Unchecked by us for varieties.	\$2,500
723	M	1841 2d blue (white lines added) imperf, 4 close margins. SG 14. Cat £5000. Mint, original gum extensively cracked.	\$1,500
724	C	1843 entire with 1d red imperf barely tied by Maltese Cross cancel no. 7 (London). Stamp over edge and damaged. Unusual usage. Letter dated Strasbourg 25 October to clockmaker un Hill via Calais & London. B/s Heath, Forse & Co. London, who were continental merchants who conveyed papers to/from France. No French stamps, 1d GB affixed by them for onward transmission.	\$200
725	U	1847-54 embossed issues: 1/- x 6, 10d x 3, 6d x 6. Nice GU/FU range, most 3 to 4 margins. Odd fault. SG 54-60. Cat £16500.	\$4,000
726	C	1854-58 1d spoon cancels; 2 covers 1854 Liverpool 466; 1858 Rugby 659. Cat £525.	\$200
727	U	1854-58 2d blue, perf x 31, 2 corner letters. SG 15-35 range. Cat £5000+ if correctly identified.	\$1,000
728	U	1855-61 1d red perf, 2 corner letters x 60 on 3 pages. SG 17-42. STC £4670 if correctly identified. FU.	\$750
729	U	1855-7 no corner letters: 4d x 12, 6d, x 3, 1/- x 4. Incl shades etc. SG 62-73. Cat £6000. GU/FU.	\$1,000
730	M	1855 4d, 6d, 1/-, no corner letters. SG 66a, 68, 72 unused no gum (cat £6350 mint).	\$1,000
731	/	1858-70 ½d x 15 used incl plate nos, 9 in block mint; 1d red x 20; 1½d x 4 used, 4 mint; 2d x 16 used. SG 45-52. Cat £6270.	\$1,500
732	U	1862-4 small corner letters: 3d x 4, 4d x 8, 6d x 4, 9d x 4, 1/- x 4. Incl shades etc. SG 75-91. Cat £6180. GU/FU.	\$1,500
733	M	1862 3d-1/- small white letters mint (4d unused no gum, 1/- faint perf tone). Range SG 76-90. Cat £14150.	\$4,000
734	U	1864-79 1d red plates 71 to 225, lacking 77, 124, 134, 145,159, (common nos, except 77). Plate 225 has 2 perf slightly short. Used. Cond appears F/VF.	\$400
735	C	1864 Mail to India. Envelope (damage to flap), London to Calcutta. Franked 1d plate (SG43) 7 9d star (SG87) tied heavy London SW15 duplex JU 18 64, via Marseille printed on front. Calcutta receiving mark on reverse JL 16 1864. Cat £1000.	\$200
736	C	1864 envelope from Marlborough to Abington De 14 1864 with 1d rose-red, 2 corner letters (SG40) & 1d plate 74 (SG43) Notably rare combination.	\$200
737	C	1864-79 1d first & last plate nos, on cover. Plate 61 pmk Exeter JU 13 1867. Plate 225 pmk Dublin JA 19 1880. Plate 225 stamp, lower left corner trimmed. Nonetheless scarce on cover.	\$575
738	U	1864-79 1d red complete set of plate no's, excluding 77. Mostly FU.	\$750
739	M	1865-83 Surface printed: large white corner letters: 4d SG 94 plate 11. Coloured corner letters: 3d on 3d SG 159, 4d brown SG 160 plate 17; 6d grey SG 161 plate 18; 1/- vermilion SG 163 plate 13; 2/6d lilac SG 178. Good colour throughout. Cat £3600. Mint.	\$1,200
740	C	1865 1d Kirkwood experimental roller canc twice, "308" on 2 x 1d, Stirling to Nelson, NZ. Cds Stirling MY 1 65. Possibly only one in existence on cover.	\$475
741	U	1865-80 large white letters 3-page range: 3d x 12, 4d x 8, 6d lilac x 12, 9d x 6, 10d x 4, 1/- x 8, 2/- blue x 4, 2/- brown x 3, 6d brown x 6, 6d grey x 4. SG 92-125. Cat £21000+. GU/FU.	\$3,000
742	P	1867 1d Paris Exbn proof. Letter EJ. Cut close at bottom SG Spec DP38. Cat £3000.	\$1,400
743	M	1867 3d-1/-blue, large uncoloured letters (3d, 9d discoloured perfs). SG 103-118 range (6 stamps). Reasonable average condition.	\$3,000
744	U	1867 5/- - £1 uncoloured letters, wmk Maltese Cross. SG 127-9. Cat £8375. GU/FU.	\$2,500
745	U	1867 5/-, wmk Maltese Cross. SG 126. Cat £675. GU/FU.	\$250
746	M	1867 5/- pale rose, wmk Maltese Cross. A trifle soiled but scarce stamp. SG 126a. Cat £9500. HH mint.	\$2,000
747	U	1867 10/- greenish-grey, wmk Maltese Cross. Cds "Nairn JA 6 82". SG 128. Cat £3200.	\$2,250
748	U	1867 10/- greenish-grey, wmk Maltese Cross. SG 128. Cat £3200. FU.	\$2,000
749	U	1867 £1 brown-lilac, wmk Maltese Cross, FU pmk Liverpool Exchange 4 FE 82. Light red registration pencil lines. SG 129. Cat £4500.	\$2,500

750	U	1867 £1 brown-lilac, wmk Maltese Cross, FU Glasgow pmk. O/c. SG 129. Cat £4500.	\$2,000
751	M	1872 6d brown, 6d grey, large uncoloured letters. Mint (gum remnants only, HH). SG 122b, 125, cat £2600. Offered 'As Is'.	\$500
752	M	1873 4d vermilion, plate 14, large uncoloured letters. SG 94. Cat £775. Mint.	\$400
753	U	1880 2/- brown with wing margin at left. Light ironed out crease not visible from front. SG 121. Cat £4250. GU/FU.	\$500
754	S	1880 2/- brown, wing margin at right, ovpt SPECIMEN. SG 121s. Cat £3800.	\$2,000
755	U	1882 5/- rose, large uncoloured letters, wmk anchor. FU 'Queen's Square Bristol' cds. SG 134. Cat £3800.	\$2,000
756	U	1882 5/- rose, uncoloured letters, wmk anchor, indistinct pmk. SG 134. Cat £3800. GU.	\$1,200
757	U	1882 5/- rose, uncoloured letters, wmk anchor. SG 134. Cat £3800. GU.	\$1,000
758	U	1882 10/- grey-green, uncoloured letters, wmk anchor. SG 131. Cat £4500. FU.	\$2,750
759	U	1882 10/- grey-green, uncoloured letters, wmk anchor. "London" pmk. SG 131. Cat £4500. GU.	\$1,750
760	U	1882 10/- grey-green, uncoloured letters, wmk anchor. "Burlington House" pmk. SG 131. Cat £4500. GU.	\$2,000
761	U	1882 £1 brown-lilac, uncoloured letters, wmk anchor. (3 dealer stamps on reverse). SG 132. Cat £7500. FU.	\$3,000
762	U	1882 £1 brown-lilac, uncoloured letters, wmk anchor. "Knightbridge" cds. SG 132. Cat £7500. FU.	\$4,000
763	U	1882 £1 brown-lilac, uncoloured letters. "West Strand 83" pmk. Faint crease. SG 132. Cat £7500. FU.	\$3,000
764	U	1882 £5 orange. "London No 25 92" cds. SG 137. Cat £3500. FU.	\$3,000
765	S	1882 £5 orange, blued paper, ovpt SPECIMEN (small letters SG Type 9). Slight creases.	\$1,250
766	U	1883 2/6d lilac, blued paper, coloured letters. SG 175. Cat £1500. GU/FU.	\$500
767	U	1883 5/- rose, blued paper, coloured letters, wmk anchor. RPSL cert 1975, "Not Pronounced Example". SG 176. Cat £4000. FU.	\$2,500
768	M	1884 lilac & green 1½d, 2½d x 2, 3d, 6d (creased). SG 188, 190, 191, 194. Cat £1220. Mint.	\$325
769	M	1884 2/6d lilac, white paper, left selvedge example. SG 178. Cat £600. Mint.	\$325
770	U	1884 5/- rose & crimson shades, coloured letters. Each fine cds. SG 180, 181. Cat £500. FU.	\$300
771	U	1884 £1 brown-lilac, wmk 3 crowns. Light blue crayon line on front. SG 185. Cat £3000. GU nearly FU.	\$1,250
772	U	1888 £1 brown-lilac, wmk orbs. Very light ironed out crease not visible from front & very light staining. SG 186. Cat £4500. GU/FU.	\$1,000
773	U	1886 £1 brown-lilac, wmk orbs. SG 186. Cat £4500. GU/FU.	\$2,000
774	U	1888 £1 brown-lilac, wmk orbs. SG 186. Cat £4500. GU/FU.	\$2,500
775	U	1891 £1 green. SG 212. Cat £800. GU/FU.	\$500
776	U	1902 2/6d EVII lilac, ordinary paper, invt wmk. Lightish but blurred parcel cancel. Light creases & light toning. SG 260Wi. Cat £3500. GU.	\$800
777	U	1902 £1 EVII, DLR print, dull blue-green, regn cancel. Few perfs at top very slightly trimmed. SG 266. Cat £825. FU.	\$250
778	S	1902 £1 EVII, "SPECIMEN" ovpt, full gum. SG 266s. Cat £1400.	\$750
779	U	1911 £1 EVII deep green, Somerset printing. Guernsey double ring cancel. SG 320. Cat £750. GU.	\$350
780	M	1912-24 GV 1d Downey Head revised, proof, issued colour, ordinary wove paper, no wmk imperf. Mackennal Heads: Royal Cypher 2½d horiz pair imperf ovpt 'Cancelled'. Block Cypher ovpt 'Specimen'; imperf 1d right selvedge single & pair, 10d right selvedge single, 1/- single & horiz pair. Mint. (7 items).	\$800
781	/	1913-34 Seahorses: BW 2/6d x 3 m (1MNG) & 10/- m; BW 2/6d x 10 u; Waterlow 5/- x 2 u & 10/- x 2 u; also range shades; 1934 re-engraved 2/6d m & 5/- x 3 m; 2/6d x 14 u; 5/- x 9 u & 10/- x 7 u. Some variable cond. (65v). Vendor's STC \$6300+.	\$600
782	M	1913 Seahorses set to £1, Waterlow print (£1 one faint toned perf). A rare offering. SG 400-403. Cat £4625. Mint.	\$3,000
783	U	1913 £1 Seahorses green, several uneven perfs. SG 403. Cat £1400. GU/FU.	\$750
784	U	1913 £1 Seahorses dull blue-green. Small paper crease. SG 404. Cat £1600. GU/FU.	\$850
785	M	1915 2/6d-10/- Seahorses, DLR print. SG 406, 409. 412. Cat £4225. Mint.	\$3,000
786	M	1915 10/- Seahorses pale blue, DLR printing, o/c, L/H. SG 413. Cat £3500. Mint.	\$1,250

787	M	1918-9 2/6d chocolate-brown, 5/- Seahorses, BW printings. SG 414, 416. Cat £485. Mint.	\$350
788	M	1918-19 2/6d-10/- Seahorses, Bradbury Wilkinson print. SG 415-7. Cat £1125. Mint.	\$800
789	M	1929 PUC set. SG 434-8. Cat £765. Mint.	\$750
790	U	1929 £1 PUC. SG 438. Cat £550. FU.	\$750
791	*	1929 £1 PUC. SG 438. Cat £1100. MUH.	\$1,200
792	U	1939 10/- GVI dark blue blk 30 (6 x 5) reinforced with stamp hinges. 3 stamps have light stains on reverse. Fine light cancels (not parcel). Horizontal crease affects 5 stamps. SG 478. Cat £660. FU.	\$350
793	M	1939-48 2/6d - £1 GVI high values set of 6. SG 476-478c. LH mint.	\$275
794	C	1940-2 WWII seln of 11 censored covers: 5 inwards "Under Cover Mail" items sent to GB via Thos Cook, PO Box 506, Lisbon, Portugal (4 ex Belgium & 1 ex Italy); 1 ex Belgium prior to German invasion; 1 ex Vichy France; 2 to Vichy France ex GB & other than GB censorship were not subject to Portuguese or French censorship & 2 domestic (Southern coastal areas) covers censored to prevent leakage of vital (troop movements etc) information. Such mail was delayed until after troop movements ceased (eg after 1944 Normandy Landings).	\$1,600
795	*	1948 £1 Silver Wedding cylinder block of 4. SG Spec cat £200. MUH.	\$160
796	*	1964 6d Shakespeare Festival part traffic light block of 6 - stunning error: double perfs affecting bottom row - some perf separation. MUH.	\$500
797	*	1964 6d Shakespeare Festival part cylinder block of 6 - stunning error: double perfs affecting bottom row - some perf separation. MUH.	\$500

BRITISH COMMONWEALTH

798	U	Canada 1852 10d Cartier blue, imperf 4 margins. Light indistinct pmk. SG 15. Cat £1800. Used.	\$750
799	M	Canada 1897 \$4 Diamond Jubilee. SG 139. Cat £1400. Mint.	\$800
800	U	Canada 1897 Jubilee set of 16 plus (extra shades of 1c, 2c, 5c & 50c). Usual heavy cancels on \$2, \$3, \$4 & \$5 (6c, 10c, 20c & \$1 very fine). (5c x 1 toned). SG 121-40. Cat £3600+. Used.	\$1,250
801	U	Cape of Good Hope 1853 1d triangular, pale brick-red, deeply blued paper, imperf block pair. Good margins all round except just into design at 1 corner, fine appearance. SG 1. Cat £900. FU. Ex Lovis.	\$400
802	U	Cape of Good Hope 1853 4d triangular, deep blue, deeply blued paper, imperf block pair. Good margins all round, except just touching at 1 corner. Complete triangular obliterator pmk. SG 2. Cat £550. FU. Ex Lovis.	\$400
803	U	Cape of Good Hope 1853 1d triangular, brick-red, lightly blued paper, imperf, block pair. Good margins all round. SG 3. Cat £700. FU. Ex Lovis, Maxwell, Joseph & Indusuphon.	\$400
804	M	Cape of Good Hope 1853 4d triangular, blue, lightly blued paper, imperf (3 margins), lovely colour. SG 4a. Cat £2000. Mint. Ex Lovis.	\$800
805	U	Cape of Good Hope 1853-54 triangular, range of 11 Perkins Bacon prints, blued paper, imperf, almost all full 3 margins & FU incl: 1d SG 1 (back thin); 4d SG 2 x 3 (1 with back thin); 1d SG 3 x 6 incl pair; 1d SG 3a. Attractive. SG cat £3750. Ex Lovis.	\$1,250
806	U	Cape of Good Hope 1855 1d triangular, brick-red, imperf, 3 margins. SG 5. Cat £900. FU. Ex Lovis.	\$450
807	/	Cape of Good Hope 1855-58 triangular, printed Perkins Bacon (white paper), range of 43, almost all used, on 2 Hagner pages. Mostly FU & 3 margins. Provenance mainly ex international auction houses. Noted: 1d SG 5b unused (small back thin) & 3 used; 4d SG 6 x 2, 6a x 9 (incl 1 VFU with "E" flaw); 6d SG 7 unused (pinhole), SG 7 x 2 used, 7b x 4, 7c x 4, 7d x 7, 1/- SG 8 x 3, 8b x 5. Odd small faults but mostly sound. SG 5b-8b. Cat £16500. Ex Lovis.	\$5,000
808	M	Cape of Good Hope 1858 1d triangular, rose, imperf, 3 margins. SG 5a. Cat £800. Unused. Ex Lovis.	\$400
809	M	Cape of Good Hope 1858 1d triangular, rose, imperf, 3 margins (1 close) & 1d deep rose-red, 3 margins, attractive due. SG 5a, 5b. Cat £2000. Mint. Ex Lovis.	\$850
810	M	Cape of Good Hope 1858 1d triangular, rose, imperf & 1d deep rose-red, both 3 margins but close. SG 5a, 5b. Cat £2000. Mint. Ex Lovis.	\$600
811	U	Cape of Good Hope 1858-9 1/- triangular, imperf x 3, all FU 3 margins: 1858 bright yellow-green, 1859 deep dark green x 2 shades. Attractive trio. SG 8, 8a. Cat £1400. FU. Ex Lovis.	\$800
812	M	Cape of Good Hope 1858 1/- triangular, bright yellow-green, imperf, 3 margins. Small back stain (showing through to front). SG 8. Cat £3500. Unused. Ex Lovis.	\$600
813	M	Cape of Good Hope 1859 1/- triangular, deep dark green, imperf, block pair, excellent margins. Gum bends (part of printing process). SG 8b. Cat £900. Mint. Ex Lovis.	\$450

814		Cape of Good Hope 1861 1d "woodblock" triangular, vermilion, imperf, all margins close-cut. 2002 BPA cert stating "used, has been extensively repaired & painted in by hand". However, we believe this stamp is possibly unused & the uneven colouring is due to the repair. SG 13. Cat £17000 mint, £2750 used. Ex Lovis.	\$500
815	U	Cape of Good Hope 1861 1d "woodblock" triangular, brick-red, imperf, 3 good margins. Apparently cleaned manuscript cancel (traces remain). SG 13b. Cat £5000. Used. Ex Lovis.	\$750
816	U	Cape of Good Hope 1861 4d "woodblock" triangular, pale milky blue, imperf (1 good margin, 2 cut very close). SG 14. Cat £2000. FU. Ex Lovis.	\$500
817	U	Cape of Good Hope 1861 4d "woodblock" triangular, blue, imperf, (1 good margin, other 2 close or slightly into design). SG 14d. VFU. Ex Lovis.	\$500
818	U	Cape of Good Hope 1861 4d "woodblock" triangular, pale milky blue, imperf, 3 margins (but 1 corner slightly truncated). SG 14. Cat £2000. GU. Ex Lovis.	\$400
819	M	Cape of Good Hope 1863-64 1d triangular, De La Rue printings. Range of 9 mint or unused on stock-card, incl: SG 18 deep carmine-red block pair MUH & single mint; 18b deep brown-red mint x 2 & unused; 18c brownish red mint & 2 unused. Most are fine 3 margins. Ex Lovis.	\$2,000
820	/	Cape of Good Hope 1863-64 triangular, printed De La Rue, range of 29, almost all used, on 2 Hagner pages. Mostly FU & 3 margins (provenance mainly ex international auction houses). Noted: 1d SG 18 x 4, 18b unused & 4 used, 18c unused (weak corner); 4d SG 19 used, 19a mint (light gum tone), 19a x 3 used, 19c x 5; 6d SG 20 x 5; 1/- SG 21 x 4. Odd small faults but mostly sound. SG cat £11550. Ex Lovis.	\$3,750
821	U	Cape of Good Hope 1863 1/- triangular, bright emerald-green, imperf 2 wide margins (1 huge), 3rd margin close. SG 21. Cat £700. VFU.	\$500
822	M	Cape of Good Hope 1863 1/- triangular, bright emerald-green, imperf block pair, with excellent margins. SG 21. Cat £1300. LH mint. Ex Lovis.	\$1,000
823	M	Cape of Good Hope 1863 1/- triangular, bright emerald-green, imperf block pair, excellent margins. SG 21. Cat £1950. LH mint & single mint (slightly diff shade). Ex Lovis.	\$1,100
824	U	Cape of Good Hope 1864 4d triangular, slate-blue, imperf 3 excellent margins. 2009 Brandon cert. SG 19b. Cat £500. FU. Ex Lovis.	\$300
825	M	Cape of Good Hope 1864 6d triangular, bright mauve, imperf block pair & single, all with 3 excellent margins. SG 20. Cat £1275. Mint. Ex Lovis.	\$750
826	M	Ceylon 1879 2r50 QV dull rose, p12½ x 14. SG 138. Cat £800. Mint.	\$650
827	M	Falkland Isl 1933 Centenary short set to 5/- Penguin. SG 127-36. Cat £1440. Mint.	\$1,000
828	M	India 1902-11 EVII mint set of 17 plus all the SG listed shades (total 28 stamps), plus 1906 ½a & 1a. Minor gum tropicalisation on 3r x 1 & 25r, more significant on 2r x 1. Nice lot. SG 119-47, 149-50. Cat £4000+.	\$2,500
829	M*	Singapore 1948 GVI set, 40c to \$2, p17½ x 18 mint, plus 5 MUH. Cat £355.	\$350
830	M	South Africa 1913-22 GV set of 15 to £1, plus extra shades - ½d x 2, 1d x 2, 1½d Tete Beche pair, 2d, 2½d, 3d, 4d, 6d & 1/- + coil stamps set of 5. Total 32 stamps, 10/- toned perf. SG 3-21. cat £1090+.	\$500
831	M	St Helena 1922 15/- Badge (ship) grey & purple on blue. SG 113. Cat £1100. Mint.	\$1,000

FOREIGN

832	*	China 1941 ½c to \$20 SYS variable quantities, noted 17c x 43 (SG 590, cat £516); \$10 x 38 (SG 597, £304) & \$20 x 44 (SG 598, £352). SG 583-596. Cat £1250+. MUH on pages.	\$1,200
833	*	China 1980 Qi Baishi Paintings set & m/s. SG 2939-55. Cat £305. MUH.	\$400
834	*	China 1980 Lotus Paintings set & m/s. SG 2998-3002. Cat £236. MUH.	\$300
835	*	China 1980 Year of the Monkey, p11½. SG 2968. Cat £1500. Fresh MUH.	\$1,500
836	M	France 1849 20c black, horiz block of 6. SG 6. Cat simpl £3300. Mint.	\$2,000
837	M	France 1927 5f + 10f Strasbourg Philatelic Exbn m/s. With 10 JUN 1927 Exbn pmk clear of stamps, mint (stamps MUH). SG MS 454b. Cat £1600.	\$1,000
838	*	France 1927 Airs, 1936 Airs (both 50f). 50f Burele has light toning. SG 455-6, 534-41. Cat £3095. All MUH.	\$2,000
839	*	France 1929 Le Havre Expo. SG 470. Cat £1000. MUH.	\$1,000
840	*	France 1936 50F Air, slight gum crease, w/c. SG 541. Cat £1000. Fresh MUH.	\$500

841	U	France 1937 Pexip Paris Philatelic Exbn m/s. SG MS 581. Cat £475. FU.	\$300
842	M	France 1938 flight France-South America set of 2. SG 553-4. Cat £500. VF mint.	\$400
843	*	France 1949, 1954 Airs set. SG 1055-9, 1194-7. Cat £914. MUH.	\$600
844	U	Italy 1951 Gymnastics Festival set. SG 787-9. Cat £1200. FU.	\$500
845	M	Luxembourg 1935 Relief Fund set of 15. Also Specimen stamp. SG 324-38. Cat £900. Mint.	\$500
846	U	Monaco 1892? 50c Telephone stamp, brown on yellow-brown (green back), Maury 1. Cat €600. FU.	\$300
847	U	USA 1869 12c, 15c with grill. SG 119, 121. Cat £390. GU.	\$200
848	U	USA 1869 24c with grill, pmk indistinct. SG 122. Cat £700. FU.	\$500
849	*	USA 1893 30c Columbus. SG 244. Cat £275. MUH.	\$300
850	M	USA 1893 \$1, \$4 Columbus, spacefillers. SG 246, 249. Cat £3800. Mint/unused.	\$400
851	U	USA 1893 \$2 Columbus, imperf at top, crayon line in front. SG 247. Cat £750. GU.	\$250
852	M	USA 1893 \$5 Columbus, tiny perf thin, corner gum crease. SG 250. Cat £3000. Mint.	\$1,500
853	*	USA 1893, 1902 Special Delivery. 1893 10c orange; 1902 10c ultramarine. Average centering. Scott E3, E6. Cat US\$1200. MUH.	\$1,000
854	U	USA 1898 \$1 Cattle Trans Mississippi Expo, small thin. SG 298. Cat £750. FU.	\$400
855	M	USA 1898 \$2 Trans Mississippi Expo, thinned. SG 299. Cat £2500. Mint.	\$800
856	M	USA 1901 Pan Am Expo set. SG 300-5. Cat £450. Mint.	\$400
857	U	Vatican 1934 surcharges, 2L 55c on 2L 50c, 3L 05c on 5L, & 3L 70c on 10L (top 3 values). SG 38-40. Cat £1600. FU.	\$725
858	M	Vietnam-North 1955 0.100k surcharge on 5d red. Complete sheet of 50. SG 34. Cat £12500. Unused no gum as issued.	\$9,500
859	*	Vietnam-North 1955 0.100k on 2d brown Ho Chi Minh Officials block of 42 (almost complete sheet except missing 8 stamps bottom row) incl 2 with invt ovpts (R1/1 & 1/2). SG 33 var. Cat £10000 plus 2 varieties (unlisted). Unused no gum as issued.	\$9,500

2019 Key Dates for your diary!

- Friday 20 September - International Coin & Banknote Auction
- Saturday 21 September - International Stamp Auction

Auctions will be held at the West Plaza Hotel, Wellington

Thinking of Selling?

We sell more stamps worldwide than any other company in New Zealand, and are now accepting material for our future public auctions. If you wish to take advantage of New Zealand's number one selling opportunity, contact us now. Suitable consignments permitting, we may add additional sales.

CONTACT US NOW!



MOWBRAY COLLECTABLES

Private Bag 63000, Wellington 6140, New Zealand

Phone +64 6 364 8270, fax +64 6 364 8250

Email auctions@mowbrays.co.nz

Website www.mowbraycollectables.com



510



Ex 514



515



529



533



543



553



557



546



Ex 549



559



560



563



584



586



Ex 587



Ex 589



Ex 592



593



573



595



596



613



624



Ex 625



Ex 626



Ex 628



629



643



647



656



663



664



Ex 665



666



667



Ex 701



702



703



Ex 714



Ex 716



Ex 733



742



Ex 743



Ex 744



746



747



748



749



750



751



754



755



756



758



759



760



761



762



763



764



765



767



771



772



773



774



776



783



775



778



Ex 782



784



Ex 785



786



791



799



Ex 800



Ex 807



816



817



Ex 819



Ex 820



821



822



823



835



Ex 507



Ex 827



Ex 828



831



839



Ex 838



848



852



853



Ex 857



600



185



316



582



585



532



Ex 843



206



285



426 (enlarged)



427 (enlarged)



Ex 434



431