

# PUBLIC STAMP AUCTION

## JIM SHAW PART 3

COMPRISING NZ COMMEMORATIVE & ERRORS,  
EXPRESS DELIVERY & NEWSPAPER STAMPS ETC.

SALE No. 32



**SATURDAY 22ND SEPTEMBER 2018 - 10.30 AM**  
**AT THE WEST PLAZA HOTEL, WELLINGTON, NZ**

MOWBRAY COLLECTABLES



Lot 2608 - 1965 4d chalky part plate/imprint block



2545



2547



2548



2549



2551



2552



2553



2554



2555



2558



2561



2562



Ex 2563



Ex 2564



Ex 2565



Ex 2566



Ex 2567



Ex 2569



Ex 2570



2572



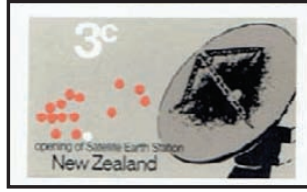
2576



Ex 2578



2601



Ex 2583



Ex 2579



Ex 2588



2590



2607



2587



Ex 2586



Ex 2589



2596



2597



2598

2573



Ex 2605



Ex 2626



2574



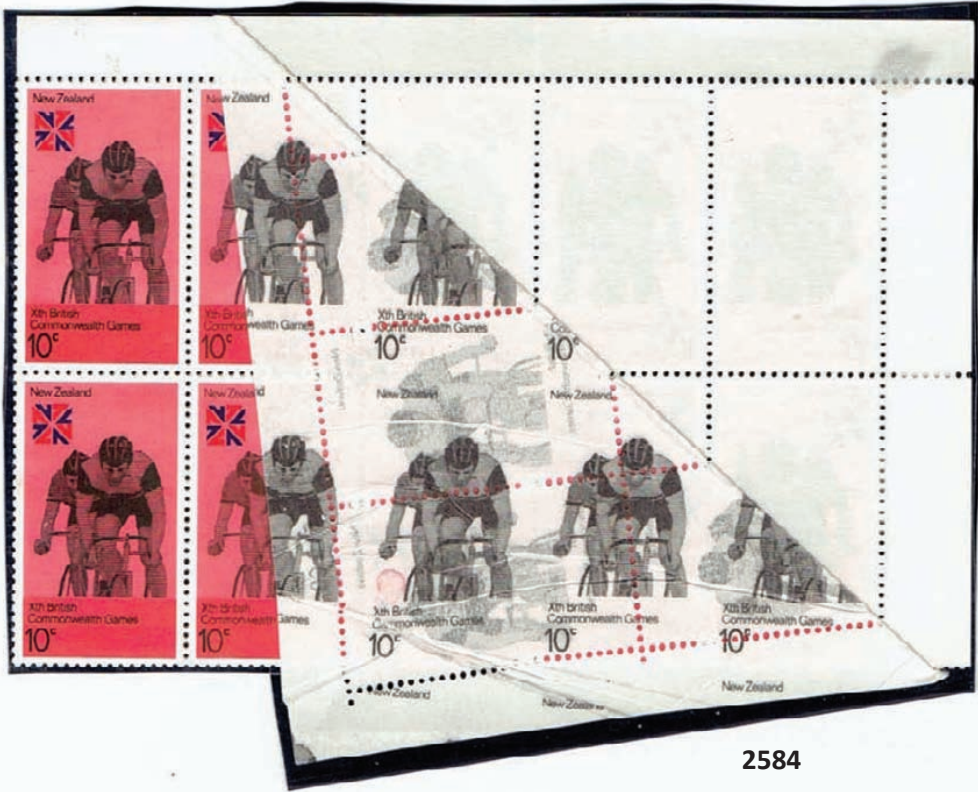
Ex 2575



2582



2612



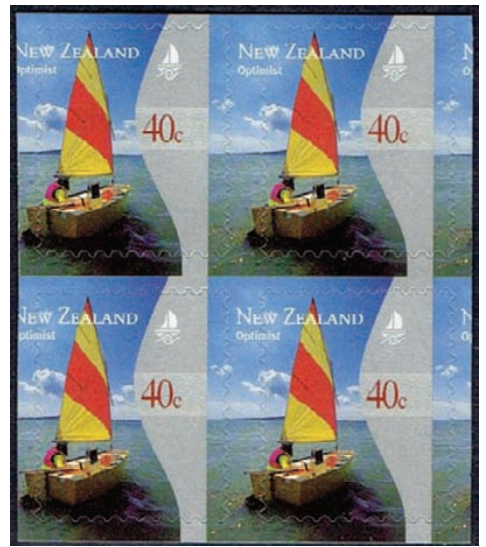
2584



2609



Ex 2610



2592



Ex 2585



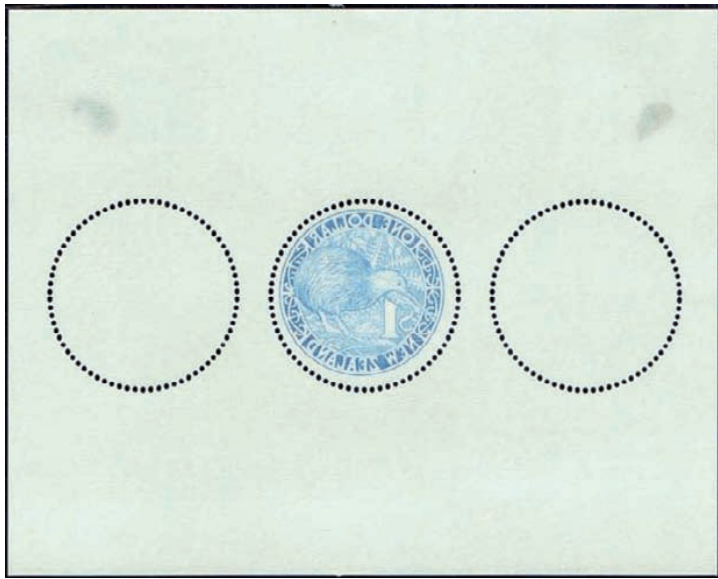
Ex 2593



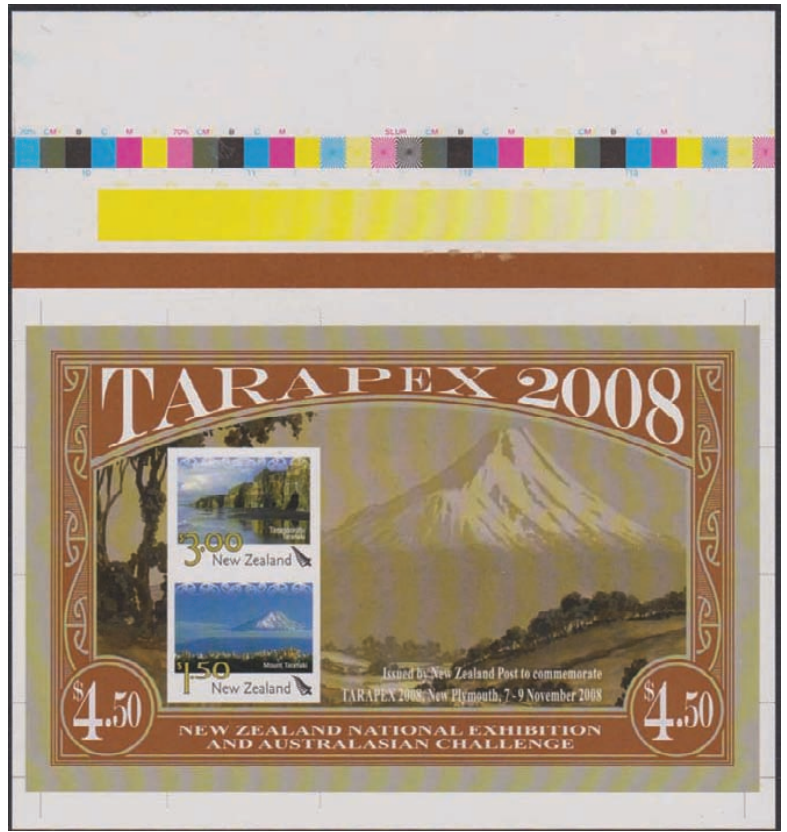
2599



Ex 2603



Ex 2591



Ex 2600



Ex 2618



2627



Part 2594



Ex 2620



2622



Ex 2595



Ex 2623



## **JIM SHAW PUBLIC STAMP AUCTION - PART 3**

**New Zealand Commemoratives, Definitives, Express Delivery,  
Health, Postage Dues and Overseas Stamps etc.**

**Saturday 22nd September 2018**

commencing 10.30am

**West Plaza Hotel, Wellington, New Zealand**



Welcome to the third public auction of Jim Shaw's numerous New Zealand collections. Part 1, held in October 2017, comprised material from Jim's award-winning Stamp Duty and Postage Dues exhibit. Part 2 held in March 2018 comprised material from some of Jim's other equally noteworthy exhibits, and more from these is offered in Part 3.

Part 3 features some amazing stamp printing errors, such as lots: 2584 (1974 10c Commonwealth Games Cycling); 2594 (2004 Olympic Games se-tenant strip of 5); 2625 (30c Mt Cook National Park with blue sky); and not to be overlooked is lot 2808 a spectacular error of Australia's 1956 1/- Olympic Games stamp.

Postal history is well represented in Part 3, with postage due, registered, airmail, censored and express delivery covers from various parts of Jim's collections and include some interesting destination mails. Jim also collected proof items, and these may be found in the Christmas, Commemorative, Definitive, Express Delivery, Health and Stamp Duty listings. There are two more unaccepted essays of the 1965 ANZAC 50th anniversary issue on offer in the centenary year of the end of World War I.

In addition to these, there are some extraordinary single stamps from Jim's New Zealand collections, as well as collections and a few interesting non-New Zealand lots to complete this sale. All the lots in this sale differ from those offered in the earlier two auctions.

My thanks go to David Smitham who has produced another great catalogue for this sale. We look forward to your participation in this sale and wish you well with your bidding.

John Mowbray  
Managing Director

**MOWBRAY COLLECTABLES**

Private Bag 63000, Wellington 6140, New Zealand

Ph +64 6 364 8270, Fax +64 6 364 8252, Email [auctions@mowbrays.co.nz](mailto:auctions@mowbrays.co.nz)

VISIT OUR WEB-SITE TO VIEW THE CATALOGUE AND PLACE BIDS:

[www.mowbraycollectables.com](http://www.mowbraycollectables.com)

### INSPECTION OF LOTS

At the premises of Mowbray Collectables, Main Highway, Otaki, by appointment: Monday 3rd September to Wednesday 19th September, during normal office hours;  
at the West Plaza Hotel, Wellington: Friday 21st September - 10am to 5.30pm,  
and Saturday 22nd September prior to the Auction - from 9am.

### BIDDING

For those not attending the auction, bids can be placed by mail, phone, fax or e-mail. Such bids should be received in our office no later than 8am NZ time (GMT + 12 hours) Saturday 22nd September (at your risk if not received by auctioneer in time).

Telephone bidding may be made during the course of the auction by prior arrangement only.

### BUYERS PREMIUM

Buyers Premium of 17% (plus GST on buyers premium for NZ buyers) will be added to the hammer price of each lot. (All buyers please note: no GST will be added to the *hammer price* of lots).

### ESTIMATES ARE IN NEW ZEALAND DOLLARS

### EXCHANGE RATES

At time of going to press: NZ \$1 = UK 52p, USA 67c, Euro 52c, Australia 92c

### PHOTOCOPIES/SCANS OF LOTS

Available on request for single items or sets (within reason). We regret we cannot supply copies of bulk lots.

**ALL LOTS ARE ILLUSTRATED ONLINE [www.mowbraycollectables.com](http://www.mowbraycollectables.com)**

### WE ACCEPT ALL MAJOR CREDIT CARDS

Credit card payments will incur at surcharge of 2% for Visa/Mastercard, and 3% for American Express/Diners.

### BIDS UNDER 70% OF ESTIMATE WILL NOT BE ACCEPTED

as this is the reserve on all lots. No vendor bids shall be accepted

### Mowbray Collectables - Registered Auctioneers

### UNCONDITIONAL GUARANTEE

Every lot in this auction is unconditionally guaranteed to match the description & be genuinely as described. Any lots found not to match our description may be returned within seven days for credit or refund.

**YOU CAN BID IN OUR SALES WITH CONFIDENCE**

### EXPLANATION OF SYMBOLS & ABBREVIATIONS

*	Mint never hinged	/	Mint & used	pmk	Postmark
MUH	Mint never hinged	L	Label	h/s	Handstamp
M	Mint hinged or unused	F	Forgery	b/s	Backstamp
FU	Fine Used	C	Cover/Postcard/Entire	FDC	First day cover
GU	Good used	cds	Circular date stamp	P	Proof
U	Used	m/s	Manuscript OR Miniature Sheet	PPC	Picture Postcard
PU	Postally used	CTO	Cancelled to Order	H/H	Heavily Hinged
o/c	Off centre	SG	Stanley Gibbons	MNG	mint no gum
OG	Original gum	CP	Campbell Paterson	R	Revenue
E	Essay				

### PUBLIC STAMP AUCTION #33

is also scheduled for Saturday 21st September at the West Plaza Hotel, commencing at 1pm, following the Jim Shaw Auction. Our 21st **Coin & Banknote Auction** is on Friday 21st September, commencing at 12 noon at the same venue. **View online at [www.mowbraycollectables.com](http://www.mowbraycollectables.com)**



# CONDITIONS OF SALE

1. INSPECTION : No lot is available for inspection by post.
2. EXTENSION: extensions for certificates will only be granted on application prior to the conclusion of the auction. John Mowbray International will submit all items so requested by successful bidders to the reputable authority of their choice, in most instances this would be the Royal Philatelic Society of New Zealand, or the Royal Philatelic Society, London. The cost of certification + postage and handling will be charged once the relevant clear certificate has been received.
3. BIDDING
  - 3.1 Bidding either in absentia or in the room will bind the bidder to these conditions of sale.

Subject to any reserve price, the highest bidder shall purchase the lot: any dispute arising as to who is the highest bidder shall be determined by the Auctioneer who may offer the lot again.

The Auctioneer may group, split up or withdraw lots, and transfer bids to identical lots at his discretion.
  - 3.2 The bidder shall be deemed to purchase as buyer unless prior to bidding he has given the Auctioneer a copy of a written authority to bid on behalf of another person.
  - 3.3 Where an agent purchases on behalf of an undisclosed client, such agent shall be personally liable for payment of the purchase money to the Auctioneer and for safe delivery of the lot to the said client.
  - 3.4 Vendor bids shall not be accepted.
4. BIDDING INCREMENTS: Postal bids must comply with the following steps:

Under \$300 - \$10 increases	\$1,000-\$2,000 - \$50 increases
\$300-\$500 - \$20 increases	\$2,000-\$5,000 - \$100 increases
\$500-\$1,000 - \$25 increases	

Otherwise, the regulation of bidding is at the Auctioneer's discretion.
5. ABSENTEE BIDDERS: Bids will be accepted from persons unable to attend the auction, and their bids will be treated in utmost confidence and managed as though the bidder is in the room. The Auctioneer shall not be liable for errors or omissions in executing bids.

Absentee bidders, who have not seen the lots they are buying, may reject any lot with the exception of bulk or mixed lots and collections, where the description is not in accordance with that given in the catalogue. However, any such lots are only returnable within forty-eight (48) hours of receipt, and in the condition received.
6. ESTIMATES: These are conservative. Bidding will commence at a bidding increment over the second highest postal/absentee bid received prior to commencement of the auction. Where one or no bids have been received, bidding will commence at seventy percent (70%) of the lot estimate.
7. PAYMENT: Lots will be at the buyer's risk from the fall of the hammer but title shall not pass until payment in full has been made of the purchase price (hammer price plus 17% buyer's premium (plus GST on buyers premium for NZ buyers) and, if applicable, interest). Payment and clearance of lots by room buyers may be carried out on the day of the sale. Payment by absentee bidders must be made upon receipt of invoice. Payments not received within 30 days of auction date will be subject to 2% penalty interest per month.
8. No GST is charged on the hammer price, but purchasers outside New Zealand undertake that neither they or an associated person will cause the goods to be re-imported into New Zealand in substantially the same condition in which they were exported.
9. FAILURE TO PAY: If the buyer breaches Condition 7, the Auctioneer, without prejudice to any other rights available to it, shall be entitled without notice to the buyer to exercise one or more of the following rights and remedies:-
  - 9.1 to terminate the contract with the buyer and any monies which the buyer has paid to the Auctioneer on account of such purchase or purchases shall be forfeited;
  - 9.2 to terminate the contract, resell the lot at any time by public auction and the buyer shall pay to the Auctioneer any resulting deficiency in the purchase price (plus interest) and insurance. Any surplus shall be paid to the vendor;
  - 9.3 to apply any monies at any time due by the Auctioneer to the buyer in payment of the purchase price (plus interest). The Auctioneer shall have a lien over any property of the buyer in the possession of the Auctioneer, in order to secure any monies due to the Auctioneer; and
  - 9.4 to proceed against the buyer for damages for breach of contract.
10. The Auctioneer reserves the right to refuse admission to any person to either viewing or the sale room, and the Auctioneer may refuse any bid.
11. GOVERNING LAW: These conditions shall be governed by and constructed in accordance with the laws from time to time in force in New Zealand and the parties hereto irrevocably submit to the non-exclusive jurisdiction of the Courts of New Zealand.

## New Zealand - ½d Boer War

2545	S	1900 1½d Boer War p11 O.P.S.O. (purple h/s) with presentation cancels, mint, some tones on rear. RPSNZ (2017) Cert.	\$2,000
2546	M*	1900 1½d Boer War chestnut, Waterlow p11, complete sheet (120v) with R2/12 re-entries, sheet numbered 239412, has some ageing and perf separation. M/muh cat \$14,000+.	\$5,000
2547	M	1900 1½d Boer War p11 error, imperf vertical left selvedge, mint, oily spot.	\$500
2548	M*	1900 Boer War p11 1½d errors: a) lower selvedge single imperf at foot, mint, small crease, b) impressive printer's 8mm wide diagonal paper repair, muh.	\$750
2549	C	1900 1½d Boer War p11 on Royal Visit to New Zealand souvenir cover, June 1901 together with 2½d Wakatipu & 1d Universal ex 19 July 1901 Christchurch to Suva, Fiji. Wellington 20 July 1901 transit cancel & Suva 29 July 1901 arrival b/s.	\$750
2550	C	1900 1½d Boer War p11 + ½d & 3d pictorials on small registered cover ex 28 July 1903 to Newcastle, Natal bearing Wellington transit & Durban arrival cancels on rear.	\$200
2551	C	1900 1½d Boer War p11 + ½d & 5d pictorials on (sender) folded 1d Terraces foolscap postal stationery envelope, ex 7 March 1901, Dunedin to Lille, France. Bearing 25 April 1901 London transit b/s & 26 April 1901 Lille arrival cds.	\$500
2552	C	1900 1½d Boer War p11 + 5d Otira Gorge on small registered cover ex 23 October 1903 Palmerston North, to Amsterdam, Holland bearing on rear Wellington transit & Amsterdam arrival cancels.	\$300
2553	C	1900 1½d Boer War p11 + pair ½d Mt. Cook ex 24 July 1901 Morrinsville on attractive social size cover to Novgorod, Russia, endorsed via Frisco bearing Auckland transit & Russian b/s.	\$300
2554	C	1900 1½d Boer War 1½d p11 on attractive QV ½d (with plate crack) commercial size postal stationery envelope ex 10 May 1901 Upper Riccarton to Sydney, NSW. Repaired rear bears Christchurch transit & Sydney arrival cancels.	\$200
2555	C	1900 1½d Boer War p11 x 2 + 1d Universal on (sender) folded 1d Terraces foolscap postal stationery envelope, ex 26 October 1901 Whangarei, wax sealed, double registered (Whangarei & New York) to Barbados, Auckland, San Francisco & New York transit cancels on rear.	\$600
2556	M*	1900-1907 1½d Boer War accumulation of approx. 225 m/muh singles & multiples, variable condition. Simplified cat \$11,000 + (as mint).	\$2,000
2557	M*	1907 1½d Boer War, Cowan p 14 chestnut, complete sheet (120v); from a very late printing of 100 sheets showing impressions of clamps (to hold the paper still whilst being printed) in the margins, sheet numbered 274670. Some perf separations, m/muh, cat \$9,000.	\$3,000
2558	M	1907 1½d Boer War compound perf 14 x 11 x 14 x 14, mint. Rendon (1996) & RPSV (2012) Certs. SG 330 cat £1,600.	\$1,250
2559	U	1900-1907 1½d Boer War accumulation of approx. 170v GU/FU in envelope and on 3 stock pages. Simplified cat approx. \$4,000.	\$1,000
2560	C	1907 1½d Boer War p14 horiz pair on registered cover ex 20 June 1908, Wellington, to Dunedin, bearing 22 June 1908 Dunedin arrival cancel. Poor perforating results in stamps appearing imperf between.	\$150
2561	C	1907 1½d Boer War p14 on KE VII 1d claret postal stationery lettercard (perforated selvedge intact) apparently incorrectly affixed at left, ex 6 May 1908 Dunedin continuous cancel to Salzburg, Austria, bearing T / 30 / CENTIMES tax mark and on rear 14 & 15 June 1908 Salzburg arrival cancels, but no signs of any postage dues affixed.	\$300
2562	U	1907 1½d Boer War mixed perf 14 & 11 fine used. RPSNZ (2018) Cert. CP E4d priced as only as mint (\$3,000).	\$500

## Christmas

2563	P	1968 Christmas 2½c set of 5 different imperf colour proof essays, produced by Courvoisier, Switzerland, together with certificate of authenticity. Vendor states that: This is the only set of Essay proofs recorded of the New Zealand 1968 Christmas stamp. Also included is a Harrison & Sons plate(1B) plate/imprint block and two singles of the issued stamp, which distinctly differ from the Courvoisier proofs.	\$1,000
2564	M*	1970 Christmas 3c error: lower selvedge vertical pair with olive green colour omitted, muh; also, upper selvedge (oily spot) single with olive green colour omitted, muh, and single with minor green colour shift, m. CP SC11b(Z).	\$350

2565	P	1977 Christmas 11c, 16c, 18c & 23c x 16 different unique Courvoisier imperf colour separation proofs, together with issued stamps, but with changed denominations. Vendor states that this is the only set of proofs recorded for the 1977 Christmas stamps.	\$3,000
2566	P	1978 Christmas 7c, 16c & 23c x 18 different unique Courvoisier imperf colour separation proofs, together with issued stamps.	\$2,000
2567	P	1981 Christmas 14c, 30c & 40c x 18 different unique Courvoisier imperf colour separation proofs, together with issued stamps. Vendor states that this is the only set of proofs recorded for the 1981 Christmas stamps.	\$2,000
2568	P	1983 Christmas 18c x1, 35c x 2 & 45c x 3 different Courvoisier imperf run up proofs on gummed paper, of colour separations with one colour overlay in each, m/muh.	\$300
2569	P	1984 Christmas 18c, 35c & 45c x 21 different unique, trimmed Heraclio Fournier imperf colour separation proofs on unwatermarked gummed paper, together with issued stamps on FDC.	\$1,000
2570	U	1997 Christmas 40c self-adhesive mis-die-cut 5mm to left resulting in booklet fold appearing at LHS with normal for comparison; also, 2003 Christmas 40c self-adhesive error: missing black fern leaf, on piece. All fu. CP SC 45f(Y).	\$250

## Commemoratives

2571	*	c1945 - 1972 sheets and part sheets galore in four large (56 x 33 cm) sheet albums. Much dup'n & e.g. 29 sheets 3c Vintage Cars. Strength in definitives (mainly low pence and cents values), e.g. QEII 2½d/3d x 7 sheets each plate 17, but also includes commemoratives, Christmas & healths. Noted full sheet 1947 Government Life ½d muh (alone cat \$1,800). All appear muh but some variable condition. Decimal f.v. = \$580+	\$800
2572	*	1946 3d Victory Pre-Printing Paper Crease: – an impressive block of four with RH vertical selvedge. Creasing occurred after the printing of the ultramarine colour, but before the green was printed and subsequent perforating, resulting in lower right stamp with almost no upper left aeroplane visible, and adjacent stamp with sliced spitfire. Accompanied by detailed explanation & charts on 3 pgs. muh.	\$750
2573	E	1965 ANZAC 3d unaccepted hand painted essay (23.9 x 15.2 cm) on card (36.5 x 26.9 cm) featuring map of the Dardanelles, lemon squeezer hat & rifle with additional (pencil) rubric beneath design, submitted & signed by James Berry. Some oily spots on front.	\$1,000
2574	E	1965 3d ANZAC unaccepted hand painted essay (24 x 14 cm) on card (32 x 22.7 cm) featuring calendar, soldiers & outlines of Australia & New Zealand, submitted by TAURUS. Some oily spots on rear.	\$1,000
2575	M*	1965 ANZAC 5d an irregular traffic lights block of 41 (R4/7 – R10/12) m/muh featuring huge cleaner ink fluid spill affecting red ink in R6/7 – R7/12 resulting in 5 Row 6 stamps 90+% red colour omitted; i.e. almost totally white poppies. CP S95a(X). A most impressive error.	\$1,200
2576	*	1965 4d International Co-operation Year colour proof in orange, red & white, sideways invt wmk, with normal for comparison, muh.	\$250
2577	M*	1968 3c Maori Bible varieties: a) vert pair gold colour shifted into upper margin, b) horiz sheet value pair misplaced perms resulting in vertical white bars at LHS; Captain Cook 1969 4c dark blue ink blob straddling two vertical stamps; 6c vertical lower left sheet corner strip of 3 with brown colour shift; 18c vertical strip of 3 with green doctor blade flaw; 56c miniature sheet embossing misplaced 6mm to right. also, Health 1969 4c + 1c blue colour partly offset on rear. [7 items] M/muh.	\$250
2578	P	1968 3c Universal Suffrage & 10c International Human Rights Year imperfs colour proof essays on Courvoisier's letterheaded paper. Vendor states that: this is the only recorded set, & also includes set as issued and 3c on New Plymouth FDC.	\$1,000
2579	/	1969 3c Law Society varieties: a) block of four double print of blue together with 11mm vertical shift, m/muh; b) blue rain in vert pair ex column 10 m/muh; also, single on FDC ex Raoul Island and cylinder block of four m/muh, latter with a few light tones. CP S115a(Z) & (X).	\$1,500
2580	*	1969 28c Cook Bicentenary error: embossing grossly misplaced muh with normal for comparison. CP S125a(Z). Also includes 18c in block of 4 with 6mm embossing shift (3 with odd tone) muh. CP cat \$580.	\$100
2581	/	1970 – 1998 sel'n of errors & varieties on Hagner (15 items) & page (3 items). Latter includes 1977 8c Anniversaries strip of 3 with black colour doubled; 1979 10c Health Sea Urchin with doubled green; & 1983 35c ANZCER lower selvedge block of 6 (3 x 2) with black colour doubled on lower-most stamps. Hagner varieties include an offset, colour shifts, doctor blade flaws, double prints, mis-perfs and a partial dry print. All are m/muh except 40c Tory Channel mis-perf which is used. The few items listed by CP are cat \$1150.	\$600

2582	E	1971 3c One Ton Cup James Berry 15.1 x 8.5 cm hand painted watercolour essay on 20.2 x 15.3cm white card, this was the accepted design for the 5c stamp. Also includes FDC.	\$1,500
2583	P	1971 3c & 10c Opening of Satellite Earth Station each four different Courvoisier unique imperf colour separation proofs. Also, 8c & 10c cylinder blocks m/muh.	\$1,500
2584	M*	1974 10c Commonwealth Games cycling – a phantasmagorical double error! Several pre-printing paper creases, a paper fold after red & black colours printed; four part-black colour offset designs appearing 90 degrees on rear owing to paper fold. The part sheet of 40 then appears to have been printed again with black ink resulting in 6 stamps/part stamps having design on gummed side. When opened out, R1/10 shows adhesion to next sheet and probably was the cause of all this; R2/6 & R2/7 cyclists for example, appear to be black & grey respectively. CP S179a(Z) but not priced. M/MUH.	\$3,500
2585	M*	1974 New Zealand Day miniature sheet error: a magnificent misguillotined miniature sheet incorporating printer's imprint & plate numbers in lower left & right stamps respectively; upper selvedge bears undenominated parts of 3 stamps, muh. Vendor states that misguillotined sheet with plate number 1A 1A 1A 1A [one sheet recorded]. Additionally, a misguillotined miniature sheet by 12.5mm resulting in both selvedge inscriptions appearing at left, mint, with normal for comparison.	\$1,750
2586	*	1977 10c 75th Automobile Association error: grey colour shift 15mm downwards, dramatically visible in traffic light block of 8 – grey traffic light beneath NEW ZEALAND on 10c RCAS stamp, grey compass points in lower white panel of all AA stamps & grey bar at top of 2 <sup>nd</sup> row of AA stamps. Also, similar error but lower left sheet corner pair with cylinder numbers, both items with normal for comparison, muh.	\$1,500
2587	*	1977 Silver Jubilee 1952-1977 miniature sheet spectacular error: completely imperforate + large silver ink splash at RHS, muh. CP SM220-224(Z) var. Cat \$3,500.	\$1,750
2588	*	1982 – 2000 sel'n of muh perforation errors on stock card: a) 1c Mineral (7.5mm shift to left), b) Barcelona Olympic Games \$1.00 (1.0cm shift up); c) 1993 Warbrick Terrace \$1.50 (5mm shift down), & d) Rainbow Mountain Scenic Reserve \$1.20 (6mm down), latter CP SS141a(Z).	\$500
2589	*	1986 Police Centenary 25c x 5 error: sepia misplaced 3mm upwards muh, with normal. Also 1986 Scenic Bays 80c miniature sheet with dramatic diagonal misperforation (2.3 cm to upper left), muh. Latter not listed by CP.	\$400
2590	*	1990 40c The Legend of Rangi & Papa error: chalky blue (denomination) colour omitted, muh, with normal for comparison. CP SH31a(Z).	\$400
2591	*	1993 \$3 Taipei '93 miniature sheet error: \$1 circular Kiwi blue colour offset, couple of oily spots [stamps ok & muh] (vendor states that: blue colour offset is one of two known), together with normal for comparison (both cream & white papers) + additional min sheet with all three \$1 circular Kiwis misaligned – the blue Kiwi is perforated through NEW ZEALAND.	\$750
2592	M*	1999 45c Yachting self-adhesive mis-guillotined error: block of four with subsequent misplaced die cutting [e.g. vert left die cut perfs pass through w of New Zealand. Backing paper hinged at top, stamps muh! Also includes a Limited Edition FDC with silver ink cancels.	\$300
2593	P	2004 Olympic Games 4 different holographic proofs in uncut blocks of four.	\$1,000
2594	*	2004 Olympic Games an incredible self-adhesive hologram error: horizontal strip of 5 (45c, 90c, \$1.50 x 2, \$2) with rouletting neatly separating Ian Ferguson from Paul MacDonald on 1 <sup>st</sup> \$1.50 stamp which straddles 90c & 2 <sup>nd</sup> \$1.50 stamp, backing paper hinged. MUH stamps.	\$2,500
2595	*	2004 Olympic Games self-adhesive hologram error: horizontal strip of 3 45c Walker/Walker, 90c Williams/Ferguson & MacDonald, \$1.50 Ferguson & MacDonald/Williams, (latter with several blind die-cut impressions at upper left) backing paper hinged. MUH stamps. Also, includes 90c Williams/Walker single & 45c Walker/(inverted) Snell – latter with RPSNZ (2007) opinion of manipulation, mint.	\$1,750
2596	M	2004 \$2 Olympic Games error: inverted lenticular image with backing paper, mint.	\$1,500
2597	M	2004 \$2 Olympic Games error: inverted lenticular image with backing paper, mint.	\$1,500
2598	*	2006 45c Kapa Haka self-adhesive, ex roll, muh	\$1,500
2599	*	2006 Kapa Haka set of 5 with traffic lights (fans) in left selvedge, muh. Vendor states This is the only set with traffic lights. Also includes photograph of set.	\$15,000
2600	*	Tarapex 2008 imperforate miniature sheet with colour control bars in upper selvedge, featuring \$1.50 & \$3.00 definitives, muh. Also includes similar Palmpex 2010 imperforate miniature sheet featuring \$1.50 circular Kiwi x 3, muh.	\$750

**BIDS BELOW 70% OF ESTIMATE WILL NOT BE CONSIDERED**

## Definitives

2601	M	1871 1d brown Full-Face Queen p 10 x 12½, R7/3 re-entry, mint. SG 128var. CP A1p(2)(U) cat \$900+.	\$250
2602	U	1893 2 <sup>nd</sup> Side-Face adverts: selection of 128 GU/FU & 1 on cover to England on 3 Hagners: 1d x 62; 2d x 50; 2½d x 9; 3d; 4d x 3; 6d x 2; 1/- (fiscal); range of colours and condition. CP (cheapest of each denomination) cat \$2090.	\$500
2603	*	c1925 2½d GV slate blue complete sheet (plate 17) of 120v, fresh white gum, uhm. CP \$9,500+ (\$1500 alone for the plate block of four).	\$750
2604	M*	1941 2d on 1½d GVI re-inserted 2 variety in positional block of four, 3 muh (incl variety)/1 mint, with pencil annotation on lower selvedge. CP M5a(Z), cat \$1,250.	\$600
2605	/	1941 2d on 1½d GVI re-inserted 2 variety: a) example in positional horizontal pair, (1 small tone) mint; & b) 2 GU/FU examples, one on piece, latter alone CP cat \$1500.	\$750
2606	*	1960 1/9d Aerial Top Dressing variety: horizontal strip of 5 with partial dry print affecting 1 <sup>st</sup> four + doctor blade on 4 <sup>th</sup> stamp; CP O15a(Z) cat from \$200 (ea.). Also, two minor varieties Tiki 1/6d. Muh.	\$200
2607	M	1965 4d Puarangi chalky, single, mint, CP \$2,000 as muh.	\$750
2608	*	1965 4d Puarangi chalky, part imprint & plate block of 6 muh, with ordinary plate 2333 block of 8 for comparison. RPSNZ (2017) Cert. CP cat \$25,000 as block of 8.	\$10,000
2609	U	1965 4d Puarangi chalky R9/9 retouch to flaw at base of D in ZEALAND together with flaw on original printing on unsurfaced paper, both fu. CP OV6g, cat \$3,000 as muh.	\$1,000
2610	/	1965 4d Puarangi chalky: specialised study of used stamps on 14 pages comprising plated examples & dated examples (singles: earliest 5 June 1966, latest Dominion Road 14 October 1966, covers: 13 June 1966, latest Atiamuri 19 May 1967) showing that distribution & use was restricted to only some North Island Post Offices. Also includes R17/12 = mint, paper adhesion, RPSNZ (2018) Cert, & R9/9 retouch x 3 GU/FU [1 m; 72 singles, 2 blocks of 4, 1 block of 6, 11 others and 5 covers]. CP alone cat \$10,000+ as used only.	\$12,000
2611	P	1967 ½c Manuka proof booklet pane (no selvedge) of 6, yellow leaves, instead of green as issued, with normal for comparison. Some perf separation, muh. Ex DLR archives & 1 <sup>st</sup> reported in The Kiwi November 2016.	\$2,000
2612	*	1967 ½c Manuka a most impressive error: red colour displaced 5mm upwards in upper margin (oily spot) vertical pair, with normal for comparison, muh. Not listed by CP.	\$500
2613	P	1967 1c Karaka proof booklet pane (XB in selvedge) of 5 + label, yellow leaves, instead of green as issued, with normal for comparison, muh. Ex DLR archives & 1 <sup>st</sup> reported in The Kiwi November 2016.	\$2,000
2614	M*	1967 3c Puarangi booklet pane (XA in selvedge) with purple colour completely omitted from first column (1 m/1 muh) and 50% omitted from central column stamps, (both muh), with normal booklet pane (muh) for comparison. RPSNZ (2010) Cert (copy). Booklet pane missing colour not listed by CP. Dead scarce & possibly unique.	\$1,750
2615	*	1967 3c Puarangi errors: a) purple colour totally omitted, single muh with normal for comparison; b) upper right sheet corner vertical strip of 3 with upper stamp 20% pale blue colour omitted at top of stamp, resulting in no flower name being present, muh. Former CP OD5a(Y), cat \$550; latter not listed by CP.	\$300
2616	P	1967 8c New Zealand Flag unique DLR printer's proof 12.7 cm square with (printed by) DELACRYL proof and for comparison 9d (PHOTOGRAVURE) alongside Also with issued stamps showing different denomination fonts, as well as Rangitoto Island ink smears. Vendor's comment This experimental, unique proof produced excellent results in a process that was ultimately not used.	\$1,000
2617	P	1967 20c Maori Rock Drawing unique DLR printer's proof 12.7 cm square with (printed by) DELACRYL proof and for comparison 2/- (PHOTOGRAVURE) alongside (with £12 on incorrect £4 sheet value printed!). Also with issued stamp showing different denomination fonts. Vendor's comment This experimental, unique proof produced excellent results in a process that was ultimately not used.	\$1,000
2618	*	1968 28c Fox Glacier error: single missing yellow colour [CP OD27a(Y)]; also, selvedge single with sepia colour misplaced to right with normal for comparison, muh (3v).	\$500
2619	M*	1967-1968 1c to \$2 multicolour balance of the collection of varieties, comprising: 2c, 5c (x 3 different), 7c (x 3 different), 10c (both), 15c (2 <sup>nd</sup> ), \$2 (both) doctor blade flaws; 7c flower & 7½c fish imperf pairs; 5c, 10c (x 3 different) colour shifts; 1c & \$1 (x 2 different) extraneous ink flaws; 1c horizontal upper left sheet corner pair grossly misperfed owing to paper fold prior to perforating, part stamps muh + oily spot on selv; 8 misc. booklet panes & 50c stamp booklet. M/muh. Interesting lot.	\$250

**ALL LOTS ILLUSTRATED ON-LINE AT [WWW.MOWBRAYCOLLECTABLES.COM](http://WWW.MOWBRAYCOLLECTABLES.COM)**

2620	M*	1970 ½c Glade Copper Butterfly to 5c Scarlet Parrot Fish selection of miscellaneous errors & varieties including: ½c all colours offset, also partial black colour offset; 1c impressive red colour shift, 2½c two different red doctor blade flaws; 3c orange bubble splatter; 4c booklet pane deep green colour shift, + few oddments on Hagner, m/muh.	\$350
2621	*	1970 3c Lichen Moth error: vertical strip of four with lower selvedge & paper mill reel join affecting two stamps (rows 7 & 8), MUH. CP P5a(X).	\$400
2622	*	1970 7½c Garfish error, all colours offset, muh, with normal for comparison. CP P10a(Z).	\$250
2623	*	1970-74 8c John Dory: watermark & no watermark examples, also error no background colour (i.e. a priceless stamp!) also minor Leather Jacket 7c colour shift. Muh, (4v).	\$325
2624	MU	1971 30c Mt. Cook National Park p13¼ x 13½ errors: a) vertical pair – lower stamp brown sky, upper stamp brown & blue sky, fine used (dated 1977); b) horizontal pair – both with blue sky & adhesive tape plus Geothermal Power \$1 GU/FU (PETONE 31 OC 77 cds). The former is proof that an ink cylinder used for this printing had not been properly cleaned after the previous print run had been completed (see London Philatelist, June 1999), only a very few examples have ever been discovered. Both pairs with some surface faults, but extremely scarce nonetheless. Also 2 mint examples: one with finer lettering definition at foot + normal.	\$2,500
2625	U	1971 30c Mt. Cook National Park p13¼ x 13½ error: blue sky vfu, RPSL (1981) Cert plus single (normal) with traffic lights. In 1981 this was one of the four extant examples. Ex Rev. Grice. Not listed by CP.	\$2,500
2626	/	1971 \$2 Agricultural Technology sel'n: a) 5 different Courvoisier imperf colour separation proofs with certificate ex archives. Vendor states that this is the only set recorded; b) cylinder block of 4 m/muh; & c) FDC.	\$1,500
2627	*	1972 4c on 2½c Magpie Moth. London letterpress error: upper selvedge example with double surcharge, & normal for comparison, MUH. CP P30b(w). Cat \$600.	\$300
2628	M*	1971-1973 4c on 2½c Magpie Moth: range of varieties on 2 pages + stock card including a) double surcharge x 2 singles, muh; b) partial double surcharge on horizontal pair, muh; c) surcharge offset, muh; d) partial missing red colour; e) missing bars, m; f) several doctor blade/inking flaws etc.	\$750
2629	M*	1973 2c Tussock Butterfly no wmk errors: a) black colour omitted, mint; b) major purple-brown colour shift 3mm upwards, muh; c) yellow colour offset muh with normal for comparison; d) block of four yellow colour shift 2mm upwards, muh. CP P3b(Y), (X), (W) & (V).	\$500
2630	*	1973 4c Puriri Moth no wmk booklet error: complete booklet pane (replated as position 20) with binding selvedge, only dark green (wing veins) colour is printed upright [remaining printed colours inverted], muh, with normal for comparison. This fantastic error [incorrectly described by CP as W10b(Wa) but cat \$14,000] is rarely seen.	\$7,500
2631	*	1973 4c Puriri Moth no wmk pva gum, error: Upper horizontal strip of 8 (R1/1-8) light green colour omitted on 1 <sup>st</sup> 3 stamps (these alone cat \$1,500), partially omitted on next 4 and R1/8 is normal. MUH. CP P6c(Y).	\$750
2632	M*	1973 4c Puriri Moth no wmk sel'n of varieties: two distinct colour shifts in blocks of four, two different colour shifts as singles (including CP6c(K) – yellow 6mm up); partial dry print of brown (single); large yellow ink blob straddling two stamps (these mint). Also, includes Postafix 8c on 4c single with deep green colour misplaced 3mm to right & horizontal pair deep green colour omitted, MUH, CP 32a(Z) cat \$1000.	\$500
2633	M*	1973 7c Leather Jacket error: black colour totally omitted, muh. Also, a) upper left sheet corner single yellow colour shift diagonally upwards to right muh; & b) deep brown 1mm colour shift down in horiz pair muh and in plate block, m/muh. CP P9b(Y) & (X).	\$400
2634	M*	1973 10c Royal Stamp no wmk errors: a) deep blue colour omitted, pvad gum; b) silver colour omitted (slight tone); c) light blue colour shift 6.5mm to right; d) single and traffic light strip of 3 misperfed resulting in 2 horizontal lines at top. Also, red doctor blade flaw in selvedge, 2 partial silver offsets & plate block of 8, m/muh.	\$500
2635	*	1975 4c Rose horizontal block of 6 (3 x 2) with vert left selvedge – a spectacular angled double comb perf strike affecting four stamps and selvedge, muh. Also, 8c errors: a) black colour omitted, muh; b) red colour 95% omitted, muh; c) old rose shade, with normal for comparison, & plate block, muh.	\$750
2636	*	1978-1979 20c, 30c & \$1 Shells, also 15c & 25c Maori Chiefs 1980 sel'n of 6 different offsets, MUH, with normal for comparison.	\$750
2637	P	1981 \$5 The Beehive trimmed, imperf proof on ungummed, white paper (6.1 x 7.9 cm), four oily spots, with issued stamp for comparison, m.	\$250

2638	M*	1982 24c Map of New Zealand errors: a) upper selvedge block of four imperf at top m/muh, & b) left selvedge horizontal block of 6 (3 x 2) double perfs affecting lower 3 stamps, muh. CP PA35b(Z) & (Y). Cat \$2,250.	\$750
2639	CM	1982 24c Map of New Zealand plate & imprint (# 117) block of 6 mint (CP cat \$800), with single on The Minke Whale Chase with 29 December 1983 Wellington Packet Boat cds.	\$200
2640	*	1988 40c Brown Kiwi impressive error: traffic lights block of four with double perfs, muh. CP PC15a(Z).	\$200

## Express Delivery

2641	P	1903 6d Express Delivery plate proofs in imperf upper right sheet corner blocks of four on ungummed vertical lined watermarked cream horizontal laid paper x 4 different: a) vermilion & deep blue; b) vermilion & emerald green; c) vermilion & chestnut; d) deep blue & chestnut. All will be visually improved by removing upper selvages with oily spots.	\$2,000
2642	P	1903 6d Express Delivery imperf plate proof block of four [R7/1-R8/2] on ungummed Cowan s/ws inverted NZ & star wmk paper, with 11mm plate crack in selvedge adjacent to R8/1.	\$500
2643	P	1903 6d Express Delivery imperf plate proof horizontal pair, on ungummed Cowan s/ws inverted NZ & star wmk paper.	\$250
2644	MU	1903 6d Express Delivery error: R8/1 plate crack single with double vertical perfs officially repaired/patched mint; also, single horizontal double perfs at top fu. Latter not patched, nor listed by CP. (2v) CP U1a(Y) cat \$500 as muh.	\$300
2645	MU	1903 6d Express Delivery error: single double vertical perfs officially repaired/patched mint; also, single horizontal double perfs at top fu. Latter not patched, nor listed by CP. (2v) CP U1a(Y) cat \$500 as muh.	\$300
2646	M	1903 6d Express Delivery p11 s/ws wmk error: imperf at base with EA letters wmk, mint. Only one error sheet known, thus only 6 examples exist. CP U1a(Z). Cat \$2,000.	\$1,000
2647	/	1903 6d Express Delivery p11 x 2 denomination misplacement varieties, mint and 4 covers: 2 May 1914 Rotorua, 14 September 1914 Timaru, 15 June 1915 Wellington & 14 November 1916 Christchurch, on 2 pages.	\$500
2648	/	1903 6d Express Delivery, fern leaf, variety: red colour shift 2mm upwards into fern leaves mng, also 6d W.T. p 14 x 15 GU/FU. CP U1a var. & U1e, cat \$545.	\$120
2649	/	1903 6d Express Delivery, fern leaf, variety: red colour shift 2mm upwards into fern leaves mint, also 6d W.T. p 14 x 15 GU/FU. CP U1a var. & U1e, cat \$545.	\$140
2650	C	1903 6d Express Delivery p11 on colourful registered KG V 1d postal stationery envelope with EVII ½d pair, 2d & 5d & 1d Dominion, ex 28 March 1913 Mohaka to Halifax, Nova Scotia, bearing 5 transit cancels on rear, including separated upper flap. Cover shows use of Express Delivery stamp as an ordinary postage stamp.	\$300
2651	C	1903 6d Express Delivery p11 on folded cover with KG V ½d x 3 ex 9 January 1919 to Wanganui bearing EXPRESS label, Collect 6d in red m/s & strip of 6 (R4/7-12) 2 <sup>nd</sup> type postage dues 1d. Minor ageing. Vendor's comment This is a prime example of the postage due collection method for the extra distance of delivery from the nearest post office. The use by a school commissioner establishes a huge credibility to its provenance, of which this is an early example.	\$750
2652	C	1903 6d Express Delivery 6d + Victory ½d, 1½d & 6d ex 31 January 1921 Timaru AERIAL POST cover to Christchurch endorsed Per / Aerial Post / Special Delivery bearing black & orange EXPRESS label, AERIAL POST & PILOT h/s in black with Euan Dickson's signature; & Air Mail Society of NZ authentication h/s on rear. A scarce flight cover coupled with Express Delivery service. Postage = 2d, Airmail service = 6d, Express service = 6d. Stapleton 27d, only 103 flown, most of which were not express flight covers.	\$1,750
2653	C	1903-1939 6d Express Delivery x 12 express 1918 – 1939 covers (including 1 underpaid by 3d, with 3 x 1d postage dues affixed); 2 additional (1936 & 37) registered covers; 2 express covers (1938 & 1940) without Express Delivery stamps prepaying express service; 1939 6 Express Delivery x 1 express (1941) cover & 1 registered (1943?) cover. Also, 1d Kiwi (u) & GVI 2d on 1d (m) postal stationery letter cards with express delivery promotion. Some variable condition (20 covers).	\$2,000
2654	/	1925 Dunedin Exhibition set + KG V ½d & 2d surface, together with 1d Dominion x 3 ex 1 May 1926 Dunedin Exhibition [last day (of Dunedin Exhibition) cover] bearing most of black & orange EXPRESS label; also, 6d Express Delivery ex 15 August 1939 Geraldine, Last Day of Issue cover; 6d Express Delivery 16 August 1939 plain FDC ex Mokai, & 4 (3 diff types) EXPRESS DELIVERY labels (7 items).	\$400

2655	U	1926 6d Express Delivery Cowan p14 x 14½ inverted wmk a superb used dated example Palmerston North 11 September 1928. Scarce, CP U1b(Z) - not priced used.	\$250
2656	C	1926 6d Express Delivery Cowan p14 x 14½ + 2 x GV surface 2d (2d postage + 2d late fee payment) on small neat typed cover ex 12 November 1931 to Wellington. The 2d depression letter rate, and late fee lasted from 1 March 1931 until 31 May 1932.	\$250
2657	C	1926 6d Express Delivery Cowan p14 x 14½ + GV 2d surface on small hand- written cover with EXPRESS label, ex 23 January 1932 Palmerston North to Wellington. The 2d depression letter rate lasted from 1 March 1931 until 31 May 1932.	\$200
2658	/	1926 6d Express Delivery Cowan p14 x 14½ sel'n of 28 m/muh – shades & flaws, (singles & blocks of 4), 2 u & 5 covers, including small neat commercial express airmail cover ex 3 July 1936 Nelson to Wellington bearing Aeroplane Trip Cancelled purple h/s, this flight not listed by Stapleton.	\$1,600
2659	C	1926 6d Express Delivery Cowan p14 x 14½, 2 covers to a Linwood Avenue chemist: a) roughly opened commercial size KG V 1d postal stationery envelope with KG V 3d surface print; b) folded foolscap envelope with GV 5d. Express Delivery stamps plated as R3/5 & 4/6 respectively, 29 September 1930 & 24 September 1931 respectively, ex Christchurch.	\$300
2660	C	1926 6d Express Delivery Cowan p14 x 14½: 4 Express Delivery airmail covers: a) + 5d Air Mail on cacheted 20 January 1932 Wellington to Westport FFC; b) pair on registered 1 <sup>st</sup> Australia-NZ airmail FFC ex 6 April 1934 Drummoyne, NSW to New Plymouth & thence forwarded on 12 April 1934 to Dannevirke; c) + 4d Air Mail on 24 December 1932 Christmas FFC – Christchurch to Timaru; d) Express Delivery cover ex 2 March 1934 Christchurch to Wanganui bearing 1d Field Marshal x 7 only.	\$750
2661	C	1936 6d Express Delivery Cowan p14 x 15 + 1d Kiwi & 1d Airmail on PPC (featuring Ngaroki-Te-Uru, "Maori Priest") [1d postage + 1d additional airmail fee + 6d express delivery fee]. Bears EXPRESS label, endorsement By 1 <sup>st</sup> / Inland / Air Mail, 16 March 1936 Dunedin "C" class cds & similar Christchurch cds – flown by Union Airways of NZ. Stapleton 125j.	\$250
2662	/	1936 6d Express Delivery Cowan p14 x 15 + 9d pictorial on OHMS registered cover ex 27 April 1936 to Beaconsfield, England, bearing boxed EXPRESS FEE PAID h/s in black & Beaconsfield 27 May 1936, arrival b/s. Stamp plated from R4/3 with mint example of this variety also. Vendor states Overseas express arrangements were introduced for other Commonwealth countries; survival of these items is extremely limited.	\$1,000
2663	/	c1936-40 6d Express Delivery a selection of various row 8/9 varieties (4 m & 2 on pieces), and an illustrated NZ-Australia-England cacheted cover also bearing 6d airmail & 6d commerce ex 27 April 1940 Auckland, to India with PASSED BY CENSOR N.Z. / 44 purple h/s & NOT OPENED BY / CENSOR boxed black Indian h/s.	\$500
2664	C	1937 6d Express Delivery WT p14 x 14½ + 3d Airmail block of four on long cover endorsed NEW ZEALAND TO NEW CALEDONIA VIA FIRST FLIGHT purple ex 19 July 1940 Auckland to New York, USA bearing boxed purple NEW ZEALAND – U.S.A. / AIR MAIL SERVICE cachet, American bilingual EXPRES / Special Delivery & Par Avion / By Air Mail labels (latter crossed out), Pan American Airways, Noumea, San Pedro & New York cancels on rear (address label partly removed).	\$250
2665	C	1939 6d Express Delivery FDC to South Australia ex Palmerston North, also complete sheet of 10 red on white Mail-7 Express Delivery labels.	\$200
2666	C	1939 6d Express Delivery + 1d, 2d & 3d postage dues together with 2½d pictorial on 16 August 1939 hand illustrated (A.R. Skinner) FDC.	\$375
2667	/	1939 6d Express Delivery photographic proof of frame design, in black; enlarged reproduction of James Berry's original design (differs from issued stamp); mint single; legal size envelope 16 August 1939 Woolston FDC bearing 3 Express Delivery and horiz pair 3 <sup>rd</sup> series 1d postage dues; also, small neat 30 June 1948 St. Kilda last day of issue cover (5 items).	\$450
2668	/	1939 6d Express Delivery the balance of the exhibit, comprising 67 m/muh, 13 used, 14 covers – many registered, and 10 express delivery covers on 12 pages + 5 loose items.	\$2,000
2669	*	1939 6d Express Delivery WT p14x 15 muh block of four (R7/5-R8/6) with 3 illustrated flaws. Minor ageing. CP U1e, cat \$1200.	\$300
2670	C	1939 6d Express Delivery WT p14 x 15 extremely rare use on cover: registered jusqu'a airmail cover ex 9 August 1939 Wellington to California, USA [4/3d postage & registration fee], comprising 11 stamps in total, endorsed AIRMAIL VIA AUSTRALIA-EURPOE-USA. bearing two black bars denoting end of airmail service on arrival in USA, & New York 1 September 1939 transit b/s. Whilst not an overseas Express Service this is a very late use of the short-lived [April – 15 August 1939] WT stamp. CP U1e, (an extreme rarity) cat \$4,000.	\$2,500

SEE THIS CATALOGUE ONLINE AT [WWW.MOWBRAYCOLLECTABLES.COM](http://WWW.MOWBRAYCOLLECTABLES.COM)



2671	/	1939 6d Express Delivery WT p14 x 15 upper right corner, sheet number (000535) block of 20 (R1/3-R5/6) 2m/18muh, also 5 singles (4m & 1fu) illustrating varieties. Some variable condition.	\$1,000
2672	/	1903-1939 6d Express Delivery range of papers/ shades/perfs etc., 23 m/muh; 21 used (incl WT p14 x 15 x 2); 1 cover & 1 front. Some variable cond. Jury cat \$4,600 as mint & used.	\$1,000
2673	/	1926-1939 6d Express Delivery 7 pages with annotated examples of the various flaws in rows 1 to 10 as singles, multiples (28m, 22 u) and on 2 covers.	\$1,000
2674	M	1926-1939 6d Express Delivery page with examples of the 9 different printings made from 2 <sup>nd</sup> centre & frame printing plates, mint. CP cat \$740.	\$270
2675	C	1939 Express Delivery 6d + GVI 1d red on 16 August 1939 printed FDC bearing black & orange EXPRESS label, minor ageing.	\$150
2676	C	1939 6d Express Delivery x 2 small hand addressed FDCs: a) ex Bluff together with 1d & 2d 3rd series postage dues; b) ex Bluff together with GVI 1d red & red on green P.P. 7. Express Delivery label.	\$350
2677	/	1939 6d Express Delivery x 84 (singles/multiples – including upper left sheet corner block with 2 stamps officially patched; also, single inverted wmk, mint) mostly muh; 16 GU/FU & 4 covers (one is an Express Delivery cover).	\$200
2678	C	1903-1948 6d Express Delivery Fern leaf x7, Car x 3 and 4 other express delivery covers (14) – only 1 is foolscap size.	\$2,500
2679	C	1938-1950 3 Express Delivery covers, each with ordinary definitives: a) 30 June 1938 Sydenham Last Day of (1d Kiwi) issue; b) 19 April 1939 Auckland airmail cover to Wellington; c) registered, airmail “EXPRESS DELIVERY” 30 March 1950 Russell cover to Melbourne! No such service existed as the Express Service ended on 30 June 1948.	\$600

## Health

2680	M*	1930 1d Health complete sheet (folded) of 80 m/muh some tones. Cat \$11,000+.	\$3,000
2681	P	1930 1d Smiling Boy Health die proof, in black on unwatermarked, ungummed paper 6.45cm x 9.1cm with oily spots, annotated 20/VIII in black m/s in upper right corner.	\$500
2682	*	1931 1d Health Red Boy fresh muh, cat \$550.	\$250
2683	*	1931 Health Red & Blue Boys in blocks of four muh, very fresh appearance notwithstanding slight gum discolouration on 2d. Jury cat \$4,400.	\$2,000
2684	M	1931 Health set mint, Blue Boy with 1'D. (accent) flaw, fresh appearance, minor gum discolouration.	\$150
2685	M	1931 Health set mint Jury cat \$500.	\$250
2686	U	1931 Health set fu. Jury cat \$360.	\$175
2687	U	1931 Health set GU/FU, part slogan cancels.	\$175
2688	/	1931 Health 1d Red Boy: x 6 m & 3 fu; also 6 mint & 1 used not so fine, 16v. Cat \$4,000 approx.	\$1,250
2689	/	1931 Health 2d Blue Boy: x 4 m & 9 fu; also 6 mint & 3 used not so fine, 22v. Cat \$3,500.	\$1,000
2690	C	1931 Health set + 5d Airmail on 1931 Christmas Flight Cover ex 23 December, Auckland, endorsed Palmerston Nth. Air Mail to The Postmaster, Dunedin, & 24 December 1931 Dunedin b/s. Stapleton 62f (506 flown, but not with red & blue boys!).	\$500
2691	C	1931 Health set + airmail set & 5d KG V on registered Christmas Air Mail flight cover to London, ex 11 November 1931 Invercargill, red air mail cachet on rear & oval 16 December 1931 reg'd arrival b/s.	\$1,000
2692	*	1932 1d Health Hygeia large multiple (16v) including upper right sheet corner, muh, some adhesions, otherwise fresh. Jury \$1,900+.	\$500
2693	/	1932 1d Health Hygeia x 105 m, x 24 mng, x 65 GU/FU, mostly as singles. Some variable condition. (191v) Cat \$9,300+.	\$2,000
2694	C	1932 1d Health Hygeia on 2 diff local 18 November FDCs (Highfield & Invercargill), also single + 1933 Pathway on 6 <sup>th</sup> Trans-Tasman FFC, together with 1933 Pathway x 3 ordinary and 4 diff FFCs incl an illustrated cover featuring Mr Val. Dunne – Superintendent of mails at Auckland (10 covers).	\$750
2695	C	1932 1d Health Hygeia on plain, clean, address printed FDC 18 November 1932 Christchurch.	\$300
2696	M	1932 Health rising sun cinderella, mint. Heslop G34, cat \$450.	\$200

**BID BY MAIL, FAX, TELEPHONE OR E-MAIL**

2697	*	1933 1d Health Pathway complete sheet x 2 (48v each) also 1935 sheet, muh & odd one odd tone. Cat \$6,000+ (156v).	\$1,250
2698	M*	1933 1d Health Pathway x 267v including various multiples, m/muh/mng. Some variable condition. Cat \$8,000+.	\$3,000
2699	/	1945 1d & 2d Health imperf plate proofs on ungummed, watermarked paper in left selvedge blocks of four; FDC ex GATE PA; 2d plate B2 block of four m/muh, & block of 20 with R7/3 retouch (estimated only to be about 400) m/muh.	\$750
2700	/	1946-1966 Health Pre-Printing Paper Creases: 2d 1946 horizontal pair and single (horizontal pre-printing paper creases) muh & GU/FU respectively; 3d 1966 horizontal strip of 3, vertical upper left sheet corner block of 6 (2 x 3) and an upper selvedge horizontal pair, all muh. Latter shows colour displacement because of creasing & other two feature pre-printing creases and colour displacements.	\$500
2701	*	1989 80c Health impressive double print of black in value block of four with pre-printing paper crease muh (mounted on selvedge), also normal for comparison & a horizontal pair with paper crease. Not listed by CP.	\$400
2702	/	1996 40c Health Teddy Bear errors: a) single (ex sheet) muh; b) ditto, but used with part ink jet cancel, on piece; and c) a crude forgery affixed to cover with a Glenfield address, in pencil. Also, normal sheet stamp for comparison muh.	\$1,750

## 4d Lake Taupo

2703	P	1899 4d Lake Taupo bicolour proof impression on horizontal mesh, off white paper, imperf vertical pair. Upper stamp thinned at top, and the pair has been gummed subsequently. RPSNZ (2018) Cert. With normal (mint) for comparison.	\$1,000
2704	M*	1903 4d Lake Taupo mixed perfs 11 & 14 error: upper right sheet corner, horizontal block of 6 (4muh/2m – latter in 2 <sup>nd</sup> row) with mixed perf 11 along tops of upper most stamps as horizontal perf 14 row is ¼” higher up! An attractive, very fresh exhibition item. CP E12e(1), cat \$5,000+.	\$2,000
2705	U	1903 4d Lake Taupo mixed perfs 11 & 14 error: perf 11 at base of stamp and perf 14 in lower selvedge, fu. Stamp somewhat roughly separated from its upper neighbour. CP E12e(1), cat \$1,750.	\$450
2706	U	1903 4d Lake Taupo mixed perfs 11 & 14 error: perf 11 at base of stamp with perf 14 just above, vfu. CP E12e(2), cat \$1,750.	\$750
2707	/	1899-1908 4d Lake Taupo the balance of the exhibit on 7 pages comprising: 1902 p11 wmk block of four with frame colour offset [not listed by CP], various mint/muh/used singles etc., including 1903 p14 complete sheet (of 80) which ought to have been re-perfed as top row of perfs is skewed upwards to right, m/muh; 1903 p14 reversed wmk gu; 1908 p14 x 12¾-13¼ x 4 (1m/3u); page of 34 used including perfins & 6 covers. Some variable condition.	\$1,500

## ½d Newspaper Stamp

2708	*	1873 ½d Newspaper Stamp p10 no wmk, muh, brown gum. CP B1a(Y) cat \$650.	\$325
2709	M*	1873 ½d Newspaper Stamp p10, an irregular block of 11: central four stamps NZ wmk, one stamp part letter wmk, 6 others no wmk, 3 stamps light vertical crease. CP B1a, B1a(Z) & B1a(Y). 3 stamps mint & 8 uhm. Cat \$5950 (2013) Ex Blease.	\$2,500
2710	/	1873 ½d Newspaper Stamp p10 NZ wmk x 5 m/mng, x 2 gu; also, p12½ gu. Mixed condition.	\$500
2711	/	1873 ½d Newspaper Stamp p10 x 25m/mng, x 18 u; p10 x 12½ x 2u; 1875 p12½ x 4m, on 10 pages. CP cat \$8,500+ (49v).	\$2,000
2712	M	1873 ½d Newspaper Stamp p10 x 12½ NZ watermark, a fine unused horizontal block of 6 (3 x 2) three with and without NZ wmk. Lower three (watermarked) stamps light horizontal crease. According to CP (2013) the total numbers extant of B1c(W) mint and used estimated at under 50. This is probably the largest known extant block.	\$1,250
2713	M	1873 ½d Newspaper Stamp p10 x 12½ NZ watermark, 9 examples on page including vertical strip of 3 with “AMP D” letters watermark [not listed this by CP]. CP B1c(W), B1c(V). Mint/mng. According to CP (2013) the total numbers extant of B1c(W) mint and used estimated at under 50. Some variable condition. Cat \$2,000 approx.	\$900
2714	M*	1873 ½d Newspaper Stamp, p12½ x 10 in block of 4 [upper left stamp letter wmk, upper right stamp no wmk, lower left stamp NZ & letter wmk, lower right stamp NZ wmk] 3 stamps mint, other uhm. Lower right stamp closed tear. Scarce, possibly only 1 trial sheet perforated thus. CP B1c, B1c(Z), B1c(X), cat \$1,800+ Ex McNaught.	\$750

2715	/	1873 ½d Newspaper Stamp, p12½ x 10 mng x 3 & 4 GU/FU (2 with letters wmk) + single ex news= paper wrapper with forged perfs! CP B1c, B1c (X) cat \$2,000+.	\$750
2716	/	1873-1892 ½d Newspaper Stamps & 1878-1892 ½d postal stationery Newspaper Wrappers accum from 3 collections comprising approximately 100 newspaper stamps m/muh; 175 u; 13 newspaper wrappers; 12 covers; 4 notices; & 2 Austin Walsh postal stationery postcards. Range of perfs, papers, wmk, postmarks & varieties annotated on pages though some mixed condition throughout. STC (Samuel & CP) \$7,500+.	\$1,250
2717	/	1873-1892 ½d Newspaper Stamp accumulation (incl various perfs, wmk, flaws etc.) of approx 1400 (loose) & 250 used on piece; 3 used with forged perfs; 31 fiscally used, 35 newspaper wrapper ½d postal stationery cut outs and 6 covers (4 to England & 2 to Germany). Some perfs/wmk/varieties annotated. Useful research material but mixed condition. Cat (as cheapest) approximately \$5,400.	\$1,000
2718	M*	1875 ½d Newspaper Stamp, p11¾ small star watermark horizontal block of 10 (2 m/8 uhm), each of upper 5 stamps with (upper sheet) line watermark. A few creases, otherwise visually fresh appearance. CP B2b, cat \$1,300+.	\$500
2719	U	1875 ½d Newspaper Stamp, p11¾ small star watermark, error double print, fu 20 March 188? Auckland "F" class cancel. CP B2b(Y), RPSNZ (1960) Cert. One of only two examples known. RARE. Ex Gwynn.	\$2,500
2720	C	1875 ½d Newspaper Stamp, p11¾ star wmk usage on newspapers etc.: 1) single [imperf at top] on The New Zealand Methodist (Vol 1 No. 24) 11 December 1884 Christchurch "A" Class cds; 2) single on readdressed The Gumdiggers' Weekly newspaper wrapper 14 September 1893 "A" Class cds, Opua 18 September 1893 "A" class b/s and 20 September 1893 Waihaha "A" Class arrival cancel; 3) strip of 3 (tones) on The Graphic (British) 2 April 1881 Christchurch "A" Class cds to Chatham Isl.	\$2,500
2721	C	1875 ½d Newspaper Stamp p11¾ small star watermark illegal use on cover. Horizontal strip of four, cancelled 8 June 1881 Nelson duplex, on cover to Blenheim bearing 10 June 1881 Blenheim arrival b/s. This cover is one of a few known when use of newspaper stamps on letters was prohibited. Ex Gwynn.	\$950
2722	/	1875 ½d Newspaper Stamp p11¾ small star wmk x 9 mint & 62 used on 8 pages. CP cat \$1,400+.	\$350
2723	M*	1875 ½d Newspaper Stamp p12½ small star watermark, error: vertical pair imperf horizontally, mint/muh, lower stamp has gum bend. CP B2a(X), RPSNZ (1972) Cert. Cat \$1,750 (2013).	\$750
2724	M*	1875 ½d Newspaper Stamp, p12½, small star watermark, plate 2, a near complete, fragile sheet of 200, (first 2 columns absent) however evidence along left vertical perfs of column 3 show the reason for the detachment - double perfs!! CP lists this variety as B2a(V) but is unknown mint. "Bulls-eye" above R1/11 in selvage. M/muh, some ageing & folds. Cat \$25,000 as normals.	\$5,000
2725	U	1875 ½d Newspaper Stamp p12½ small star watermark, error: double perfs, at top, fu, 29 August 1885 Dunedin "A" class cds. CP B2a(V) listed but unpriced.	\$2,000
2726	U	1875 ½d Newspaper Stamp p12½, small star wmk, double print, superb used part 21 December 1892 AP(?) "A" Class cancel. CP B2a(Y), with comment that One of B2a(Y) is known. Ex McNaught. Exceedingly rare.	\$2,500
2727	U	1875 ½d Newspaper Stamp p12½, small star wmk, O.P.S.O. hand stamped in purple, light part Wellington "F" Class cancel, some aesthetically trimmed perfs enhance this rare stamp. RPSNZ (2006) Cert. CP BP2a, cat \$3,500.	\$1,500
2728	C	1875 ½d Newspaper Stamp p12½ star wmk single used on 1 March 1888 The Farmer's Circular & Weekly Report newspaper, cancelled on publication day with Dunedin "F" Class cancel; also, similar but p11¾ in horiz strip of 3 bearing 23 October 1879 Dunedin "A" Class cancels & ½d Austin Walsh private postal stationery postcard 7 January 1893 Hampden "A" Class cancel.	\$750
2729	/	1875 ½d Newspaper Stamp p12½ small star wmk, plate 2 the largest recorded block R11/5 – R20/12 (80v) m/muh, includes Bull's Eye beneath R20/11, and angled perfs in corner owing to paper fold. CP B2a Cat approx. \$10,000. Some slight gum discolouration. Also includes single (fu) misperf.	\$4,500
2730	M	1879 ½d Newspaper Stamp p10 x 12½, vertical mesh, no (star) wmk, regummed mint. CP B2ab (variety). Unpriced. RPSNZ (2017) Cert.	\$3,000
2731	U	1879 ½d Newspaper Stamp warm rose shade, perf nearly 12, star wmk, believed to be the only extant example of a plate 2 printing on star wmk paper. GU/FU 18 November 1881 Queenstown "A" class cds. RPSNZ (1988) Cert. Mentioned as being very rare but otherwise not listed by CP. Ex Gwynn.	\$2,000
2732	C	1891 ½d Newspaper Stamp together with 6d FSF on registered cover to Cornwall, England ex 20 January 1892 Christchurch, endorsed via Frisco with 5 March 1892 Birmingham arrival cancel.	\$250

**BIDS BELOW 70% OF ESTIMATE WILL NOT BE CONSIDERED**

2733	S	1892 ½d Newspaper Stamp p12½ NZ & star wmk SPECIMEN (1.75 x 15.25 mm) h/s in purple, also ½d newspaper wrapper (rubric 4 lines) with SPECIMEN. (1 x 11.5 mm) h/s in red, latter some ageing.	\$250
2734	M*	1892 ½d Newspaper Stamp p12½, NZ & star wmk, block of four with double perfs centrally vertical, 2m/2muh. CP B3a(W).	\$500
2735	M*	1892 ½d Newspaper Stamp p12½, NZ & star wmk, block of four with double perfs centrally vertical, but also officially patched – to avoid waste 2m/2muh. CP B3a(W).	\$300
2736	M	1892 ½d Newspaper Stamp p12½, NZ & star wmk, vertical pair purple O.P.S.O. hand stamp, with clear doubling on lower stamp, mng, some faults. CP BP3a cat \$5,000 (used). RPSNZ (2013) Cert.	\$1,500
2737	M	1892 ½d Newspaper Stamp p12½, NZ & star wmk, purple O.P.S.O. hand stamp, mint, oily spot. CP BP3a cat \$2,500 (used). Odenweller (2011) Cert.	\$750
2738	C	1892 ½d Newspaper Stamp p12½ NZ & star wmk aniline pink in horizontal strip of 5 on 21 July 1894 Napier cover endorsed via Brindisi to Modena, Italy with 6 September arrival b/s.	\$250
2739	C	1892 ½d Newspaper Stamp + 1d SSF vert pair on NZ Insurance (Oamaru agency) cover to Guatemala, San Francisco 4 August 1892 transit cancel, various Guatemalan b/s, 20 March 1893 London transit cancel.	\$300
2740	C	1892 ½d Newspaper Stamp p12½ NZ & star wmk misperf single (used as make-up rate) plus 2d 2 <sup>nd</sup> Side Face on small neat handwritten cover bearing 25 January 1893 Christchurch “F” Class cancels to New York. USA.	\$250
2741	C	1892 ½d Newspaper Stamp p12½ NZ & star wmk on 3 different 1894 advertising covers: a) Christmas greetings cover & card ex Music Studio, Invercargill; b) ALWAYS / DRINK / Morton’s/ PEERLESS / TEA in blue on cover ex Auckland; c) Kempthorne, Prosser & Co pictorial advert on rear of cover ex Auckland. Also parcel tag with ½d & 2d 2 <sup>nd</sup> Side Face x 2 each on (3oz to 4 oz) parcel tag, very scarce usage. Vendor’s comment parcel tag alone well worth the estimate.	\$600
2742	C	1892 ½d Newspaper Stamp p12½ NZ & star wmk on local 25 November 1893 Dunedin cover, bearing red Initials of Letter Carriers, Dunedin, NZ cachet (and 12 initials) on rear, red NOT FOUND & purple UNCLAIMED cachets on front with purple 2 January 1894 Dunedin “A” Class cancel.	\$300
2743	C	1892 ½d Newspaper Stamp p12½ NZ & star wmk single used as make-up rate (10½d) on long overweight (1oz. plus) registered cover with four 2½d 2 <sup>nd</sup> Side Faces bearing 10 September 1892 Onehunga duplex cancels, Registered / 10 September 1892 / Auckland transit cancel & 1862 registration number in red m/s, to England. Interestingly, the ½d stamp has several small flaws (illustrated) and 2 similar used examples are included also.	\$750
2744	C	1892 ½d Newspaper Stamp p12½ NZ & star wmk together with 2d & 3d 2 <sup>nd</sup> Side Face (latter with Poneke advert in red brown) on small tidy registered cover (5½d registered letter rate) ex 20 March 1895 Christchurch, to Santander, Spain, bearing red London 25 April 1895 transit cancel and 27 April 1895 Santander arrival b/s, a most unusual destination.	\$750
2745	C	1892 ½d Newspaper Stamp p12½ NZ & star wmk used as make-up rate (1½d) on QV 1d blue postal stationery postcard, 22 April 1895 “F” Class cancels, 27 April 1895 Bluff “A” Class transit cancel, to France with part red French 8 June 1895 arrival cancel.	\$250
2746	C	1892 ½d Newspaper Stamp p12½ NZ & star wmk x 2 on small neat registered cover to Austria also with 5/- 1 <sup>st</sup> Side Face, 1d block of four & single 2d 2 <sup>nd</sup> Side Face, ex 11 December 1913, Wellington. Whilst philatelic in nature (stamps were demonetised 31 December 1913), vendor states that this is the only known high value 5/- stamp used in a late usage before demonetization.	\$1,250
2747	C	1892 ½d Newspaper Stamp p12½ NZ & star wmk x 3 together with 4d 2 <sup>nd</sup> Side Face on small neat registered cover (5½d registered letter rate) ex 2 April 1895 Te Aro to Honolulu, Hawaii, bearing Wellington & Auckland transit b/s, and 2 May 1895 Honolulu arrival cancel - a difficult destination cover.	\$750
2748	C	1892 ½d Newspaper Stamp p12½ NZ & star wmk: single as Card Only rate ex 14 December 1893 to North Sydney, N.S.W. bearing 23 December 1893 Sydney arrival b/s, minor ageing.	\$200
2749	C	c1893 ½d Newspaper Stamp: single on printed postcard ex Invercargill to Dipton; 6 different 1d QV blue postal stationery postcards each with single ½d stamp – to Europe/Burma/USA; strip of 4 on cover ex Cromwell to Dunedin; single + 2d SSF on cover to England; single on folded sealed (and subsequently flap opened at left) on cover ex Auckland to USA. [10 covers].	\$1,000
2750	/	1892 ½d Newspaper Stamp p12½ NZ & star wmk x 189 m/muh, etc. on pages with letter wmk/no wmk. Some variable condition. CP B3a(Z)(Y). Cat \$14,000+.	\$1,250

ALL LOTS ILLUSTRATED ON-LINE AT [WWW.MOWBRAYCOLLECTABLES.COM](http://WWW.MOWBRAYCOLLECTABLES.COM)

## Postage Dues

2751	S	1899 ½d x 2; 2d (small D), 3d, 4d, 5d, 6d, 8d, 10d, 1/- Postage Dues each with presentation bar cancels.	\$1,000
2752	M*	1899 3d Postage Due Pre-Perforating Paper Crease block of 4 (m & 3 MUH) displaying angled vertical perfs at left and centre, and saw tooth perfs at RHS owing to opened out pre-perforating paper fold. Two minor tones at base.	\$600
2753	M	1899 Postage Dues set mint with annotated frame plate settings. Odd one odd tone. Simplified cat \$1,800.	\$450
2754	M	1899 Postage Dues simplified set (11v) mint.	\$450
2755	U	1899 ½d x 7; 1d x 1240, 2d x 261, 3d x 8, 4d x 2, 5d x 5 & 6d x 1 Postage Dues GU/FU. Vendor states: will bear fruit for anyone into them with December 1899 dates. Also few misc 2nd & 3rd series etc. (36v). Simplified cat \$7,000+.	\$750
2756	U	1899 1/- Postage Due error: double perfs horizontally at top and at foot of stamp, GU/FU. CP Y13a(Z), cat \$500.	\$750
2757	U	1899 Postage Dues simplified set (11v) GU/FU, cat \$1,800.	\$500
2758	/	1899 Postage Due ½d – no stop after D variety, muh, with normal for comparison, m. CP Y2a(Z). Also includes the following perf varieties: ½d horiz. pair appearing partially imperf between owing to blind perfs mng; 5d & 1/- both with double perfs at base, GU/FU. CP Y9a(Z) & Y13a(Z) – latter items cat \$800.	\$500
2759	/	1899-1928 Postage Dues sel'n of 109 m/muh & 105 u (singles & multiples) on 8 pages & 6 part pages comprising ½d to 4d denominations only. Some variable condition, cat \$5,500+.	\$1,000
2760	C	1899 3d Postage Due on unpaid local Guardian Assurance Company cover ex 12 May 1918, with an abusive letter re petrified wood, threatening legal action if not returned, together with explanatory newspaper clipping: I will not be responsible for any debts contracted in my name from this date. 11 May 1918. – John Boag, 4 Monmouth St., Grey Lynn, late St. James St. An interesting piece of social history despite condition.	\$250
2761	C	1899 4d Postage Due on commercial cover bearing 2d Pembroke Peak cancelled 24 December 1900 Gisborne "F" class cancel, TO PAY / 2d / DOUBLE DEFICIENT POSTAGE BLACK H/S, 2d crossed out and 4d inserted (twice) in indelible pencil to Dunedin, 2 January 1901 Dunedin "A" class cds cancelling postage due. Rear bears 1 January 1901 R.P.O. DN-N "A" class b/s. Uprated to 4d owing to cover being over ½ oz weight.	\$275
2762	C	1899 1 <sup>st</sup> Type Postage Dues selection of 47 domestic covers (mainly post cards): 1d x 23; 2d x 15 +8 (1d x 2); 3d (1d x 3) on overcharged 1906 postcard [Greymouth-Wellington] clearly bearing TO PAY / 1d / DOUBLE DEFICIENT POSTAGE tax mark in black.	\$1,000
2763	C	1899 1 <sup>st</sup> Type Postage Dues selection of 30 inwards covers (mainly post cards): 1d x 16; 2d x 6 (incl 1d pair); 3d x 5 (incl Puerto Rico postal stationery envelope); 5d x 1; 6d (1d pair + 2d pair) on compulsorily registered SS Ventura / Oceanic Steamship Company illustrated cover ex Pago Pago) x 1; & 10d (1d x 10) on rear of underpaid [stamp removed] cover ex New York. Variable condition.	\$1,000
2764	/	1902-c1930 Postage Dues semi sorted bulk stock: ½d x 206 m, 66 u; 1d x 35 m, 2727 u; 2d x 11 m, 60 u; (these alone simplified cat \$7200+) & 23 misc envelopes/stockcards with a few odds noted also.	\$500
2765	M*	1905 2d Postage Due Cowan, p11, block of four with left selvedge [PO] letters watermark, 2m/2muh. Vendor states that: "only 20 sheets were issued (4,800 stamps) much underrated & underpriced." CP Y17a, \$1,600.	\$1,000
2766	M*	1905 2d Postage Due Cowan, p11, lower left sheet corner block of four. R10/1 no watermark (this not listed by CP), R10/2 part letter [N] watermark (this also not listed by CP). Vendor states that: "only 20 sheets were issued (4,800 stamps) much underrated & underpriced." Some minor creases affecting lower stamps but nonetheless visually attractive. 3m/1muh. CP Y17a, under catalogued at \$1,400 .	\$1,200
2767	U	1905 2d Postage Due Cowan, p11, fine used; also, another example (vfu) with red (denomination) colour offset. CP Y 17a, cat \$500.	\$250
2768	*	1906 1d Postage Due p 11 horizontal strip of three with inter-panneau selvedge, variety red colour offset - not listed by CP. CP Y16a, cat \$180, as normals.	\$1,000

**SEE THIS CATALOGUE ONLINE AT [WWW.MOWBRAYCOLLECTABLES.COM](http://WWW.MOWBRAYCOLLECTABLES.COM)**

2769	U	1906 1d Postage Due perf 11 error: double perfs at top (not listed by CP), part letters wmk, fu part (M)ANGAWEK(A) "B" class cancel. RPSNZ (2018) Cert.	\$500
2770	U	1906 2d Postage Due s/ws inverted wmk, p14 reperfed 11 at base, fu. Odenweller (2017) Cert. CP Y17b(b)(Y). Also, 1899 postage due 1/- showing remnants of additional (horizontal) perfs GU/FU. Odenweller (2017) Cert.	\$750
2771	/	1902 ½d Postage Due no wmk, p11 research stock, including shades etc: 47 m/muh/mng, 35 u. SG D17. CP Y15a, cat \$640+.	\$75
2772	/	1904-1906 Postage Dues p11, Cowan watermarked paper, m/muh/mng/u research stock, in singles & multiples etc: ½d x 65 m, 78 u; 1d x 124 m, 52 u; 2d x 2 m, x 7 u. Some variable condition. SG D18-20, CP Y15b, Y16a, Y17a, cat \$6,600+.	\$650
2773	/	1925 ½d Postage Due p14 x 15, Jones paper, m/muh/mng/u research stock, in singles & multiples etc: 4 m, 30 u including R5/7-R8/12 block with R8/5 flaw. SG D26, CP Y15d, cat \$3,200+.	\$350
2774	/	1925 Postage Dues p14 x 15, litho watermark, m/muh/mng/u research stock, in singles & multiples etc: ½d x 228 m, 29 u; 2d x 44 m, 17 u. Some variable condition. SG 27-28, CP Y15e, Y17d, cat \$5,100+.	\$500
2775	/	1937-1938 Postage Dues p14 x 15 WT paper, m/muh/mng/u research stock, in singles & multiples etc: ½d x 58 m, 15 u; 1d x 43 m, 38 u, 2d x 7 m, 52 u, 3d x 13 m, 27 u. Some variable condition. SG 37-40, CP Y15h, Y16f, Y17h, Y18c, cat \$7,400+.	\$750
2776	/	1902-1937 2 <sup>nd</sup> Type Postage Dues accumulation m/muh/mng/u, singles & multiples, on/off piece or on pages. Noted ½d p11, Cowan, watermarked paper error double perfs vertically in block of 4m/muh. Some postage dues are annotated, but generally a mixed lot & mixed condition. Totals: ½d approx. 690v; 1d approx. 2250v; 2d approx. 1080v & 3d 170v. Jury cat (as all being used) approx. \$20,000.	\$2,000
2777	C	1906-1907 2 <sup>nd</sup> Type Postage Dues, 6 covers with early 2d (5) & 3d rates: 4 domestic (to Caversham, Epsom, Fordell & Havelock North) & 2 inwards (from N.S.W. & USA) covers. Variable condition.	\$125
2778	C	1906-1919 2 <sup>nd</sup> Type Postage Dues, 1d rate within N.Z., x 21 covers Plus 20 inwards overseas. Dates mostly 1906-1910 and, apart from 1911 OHMS Registrar of Electors cover all are postcards. Variable condition.	\$350
2779	C	1912-1939 2 <sup>nd</sup> Type Postage Dues, collection of 2d to 6d rates on 22 inwards overseas covers: 2d x 9; 3d x 9 (including 5 with a single 3d postage due affixed); 4d x 2 (including one cancelled with incorrect date and amended by red m/s); 5d x 1 (front only, ex India) & 6d x 1 (3d pair on compulsorily registered cover ex 6 February 1931 Albury, NSW). Attractive lot.	\$750
2780	C	1913-1939 2 <sup>nd</sup> Type Postage Dues, 1d rate within NZ., collection of 21 covers: including roughly opened 1934 railway loose letter, 1935 invalid British GV 1d on cover, commercial & government underpaid mail. Variable condition.	\$650
2781	C	1925 1d & 1926 2d Postage Dues Cowan, p 14 x 15, on well-travelled, twice readdressed cover ex 13 November 1928, Baghdad, Iraq, to Palmerston North, then Kelburn & ultimately Marton, NZ bearing 1a Iraq stamp x 3, circular T (taxe mark) in black, 30 added in red m/s, TO PAY / 3D / DOUBLE DEFICIENT POSTAGE h/s in black, Wellington undated "A" class cancels on postage dues, & 29 December 1928 Wellington "C" class transit cancel. Rear bears 15 November 1928 Baghdad & 27 December 1928 Palmerston North Delivery "C" class cancels. 2d Postage due is plated as being R4/1.	\$750
2782	/	1939 3 <sup>rd</sup> Type Postage Dues bulk research stock of 2,150 stamps m/muh/mng/u: ½d x 97m, 199u; 1d x 201m, 272u (includes multiple s/ws wmk block of 6 clearly dated 1951); 2d x 308m, 480u; 3d x 372m (includes complete sheet of 120), 221u. Some variable condition. Jury cat \$20,000+.	\$1,500
2783	C	1933-1936 2 <sup>nd</sup> Type Postage Dues, 2d rate within NZ., on 13 FFCs: some duplication & mixed condition.	\$500
2784	C	1939 1d 3 <sup>rd</sup> Type Postage Dues on 21 inwards covers: 1d x 3, 2d x 3 (including 1945 Fanning Island underpaid censored cover), 6d x 1 & 2/6d x 1 (1947 overweight air cover from Scotland – 10 postage dues on front & 20 on rear!). Variable condition.	\$500
2785	C	1939 2d 3 <sup>rd</sup> Type Postage Dues on 23 domestic covers: 2d x 8, 4d x 7 (including 1948 Opened in Error/Officially Sealed cover), 6d x 4 (including 1946 cover bearing TO PAY // AIRMAIL POSTAGE purple h/s & 6d inserted in pencil), 8d x 3, & 1/- x 1 (1939 opened out cover bearing TO PAY // AIRMAIL POSTAGE purple h/s & 1/- inserted in pencil).	\$1,000
2786	C	1939 3d 3 <sup>rd</sup> Type Postage Dues on 29 inwards covers: 3d x 4, 5d x 5 (including 2 unstamped "airmail" covers!), 6d x 5, 7d x 2, 7½d x 1, 8d x 1, 10d x 7, 11d x 1, 1/- x 1, 1/6d x 1, & 1/10½d x 1. Variable condition, but 67 x 3d GU/FU postage dues are present, these alone cat \$1,300+.	\$1,500

2787	C	1939 3 <sup>rd</sup> Type Postage Dues in combination with postage stamps used as postage dues on 6 inwards covers & 1 rear: ½d x 9 + 6d GVI (1951 10½d postage due cover), 2d + 1/- Peace [inscribed Postage / Due in blue ink] (1947 1/2d postage due), 2d + ½d GVI (1949 2½d postage due), 2d x 3 + 1d + 1/- Centennial x 9 (1941 9/7d postage due rear), 3d x 2 + 1/- GVI (1947 1/6d postage due), 3d x 2 + 1/- GVI x 2 (1949 2/6d postage due), & 3d x 2 + 2/- GVI (1950 2/6d postage due). Various instructional markings & various condition.	\$650
2788	/	1939-49 Postage Due 1d, 2d & 3d accumulation: 1d x 24 m including block of four with sideways (i.e. ABNORMAL) wmk [CP Y20a(Z) cat \$1600] - but toned, 4 u, 3 covers; 2d x 20 m; 3d x 14 m, 51 u, 1 piece.	\$1,200
2789	C	1939-1950 3 <sup>rd</sup> Type Postage Dues, 1d to 10d rates on 20 inwards covers. 1d x 4; 2d x 4; 3d x 5; 4d x 2; 5d x 1; 6d x 3 & 10d x 1. Noted: incorrectly calculated (and overcharged 3d instead of 2d) 2 May 1941 Ceylon cover; crumpled stamp less airmail cover ex 3 October 1949 Post Alberni, Canada with stamp void, harshly charged 10d postage due in Dunedin on 13 October. Variable condition.	\$400
2790	C	1939-1950 3 <sup>rd</sup> Type Postage Dues, 1d to 8d rates on 49 domestic covers. Most are underpaid, 3 (x 4d) bear demonetised NZ stamps & 2 (x 4d) bear invalid overseas stamps! 1d x 4 (incl 2 FDCs); 2d x 13; 4d x 27; 6d x 3; 8d x 2. Variable condition.	\$250
2791	C	1899-1939 Postage Dues on 23 domestic covers: 2 x 1d 2 <sup>nd</sup> series, & 6 x 1d 3 <sup>rd</sup> series on Business Reply Cards; 12 assorted covers; and 3 registered covers (2 compulsorily).	\$1,250

## Postal History

2792	C	New Zealand Marine Post Office covers x 15: Aorangi x 2 (1928 & 1934); Makura x 2 (1928 & 1936); Maunganui x 3 (1928-1936); Monowai x 2 (1935 & 1937); Niagara x 5 (1928 - 1937); Tahiti x 1 (1937) with various dumb/packet boat cancels, some folded & all but one are small size covers.	\$350
------	---	---	-------

## Postal Stationery

2793	S	1882 ½d Newspaper Wrapper (watermarked), rubric in 4 lines indicium directly beneath ornamental frame: a) SPECIMEN (inverted) h/s in mauve; b) ditto, similar but SPECIMEN m/s in red applied twice; & c) ditto but 1892, rubric in 5 lines SPECIMEN h/s in mauve.	\$900
2794	C	c1890 ½d Newspaper Wrapper rose x 3 (rubric 4 lines) unused; 1 (rubric 5 lines) + ½d SSF ex 28 September 1897 Wellington to Buenos Aires, Argentina; 2 (rubric 5 lines) local Dunedin share broker's reports; 2 (rubric 5 lines) ex Wellington – 1 with unclaimed in red m/s – other with part (NOT FOUND h/s in purple, (8 wrappers).	\$500
2795	C	1892 ½d Newspaper Wrapper aniline rose (not recorded by Samuel) rubric 5 lines (Samuel FA4A variety) fine unused.	\$250
2796	C	1892 ½d Newspaper Wrapper, rubric in 5 lines, 4 used examples: a) to Stockholm, Sweden (1892) with ½d newspaper stamp; b) to London (1893) underpaid, taxed with ½ h/s in black (crossed out) also 1d / F.B. black h/s; c) to London (1896) with ½d 2 <sup>nd</sup> Side Face; & d) used in Brousse (modern day Bursa), Ottoman Empire, with Turkish 5 paras to Russian consul in Salonika (modern day Thessalonica).	\$1,250
2797	C	1878-1892 ½d Newspaper Wrapper, balance of exhibit comprising: 6 mint (examples from 1 <sup>st</sup> , 2 <sup>nd</sup> & 3 <sup>rd</sup> printings), 7 used (inland, as well as to Hobart, London & Melbourne), 3 used cut outs & Blind Justice watermarked Newspaper Wrapper bundle cover. Some variable condition (17 items).	\$1,000
2798	C	1878-1892 ½d Newspaper Wrappers sorted research stock: 1878 x 9 unused (Samuel cat \$900 - 1992); 1881 x 16 unused, x 2 used (cat \$580); 1889 x 19 unused, x 4 used (cat \$500); 1892 x 20 unused, x 29 used (one appears to be a presentation example with only a circular cancel) & 4 used cut outs. Some variable condition. Many loose but some annotated on pages. (99 v + 4).	\$750
2799	C	1892 ½d Austin Walsh postal stationery cigarette post card: 2 mint, & 1 used ex 17 October 1897 Dunedin. Also includes 12 x ½d newspaper wrapper cut outs. Some variable cond.	\$225
2800	C	1893-1895 Post Office Stationery: two different Colonial & Foreign Parcel-Post postcards (C. & F.P.P. 15] and C & F.P.P 15A.]) extremely fine unused. Former dated (in pencil) 1893, latter 1895.	\$300

## 1d Stamp Duty

2801	P	1878 1d Stamp Duty imperforate proof (24 x 28 mm) in black, on thin unwatermarked paper.	\$1,250
2802	/	1878 1d lilac Stamp Duty x 2 m, x 1 GU/FU, x 28 fiscally used, some variable condition.	\$2,000

2803	M	1878 1d blue Stamp Duty unused, inverted watermark. RPSNZ (2017) Cert. CP Z1b(Y) only priced \$500 as used. Very scarce.	\$500
2804	/	1878 1d blue Stamp Duty accumulation including 20 m/mng, 100 GU/FU, 60+ fiscally used on receipts and numerous loose fiscally used, including some inverted wmk.	\$4,000
2805	C	1878 1d blue Stamp Duty pair on somewhat grubby cover to Timaru, stamps bear Balcairn 24/3/82 m/s cancels also C in diamond within horizontal oval cancel, rear bears 24 March 1882 Christchurch "A" class transit cancel & 25 March Timaru arrival "A" class cancel.	\$750
2806	/	1878 1d blue Stamp Duty x 2 postally used & 33 fiscal stamps; 5d honey seal; 1936 £4 Unemployment Relief; 24 assorted covers; 1 newspaper wrapper; misc 1d & 2d 2nd series postage dues, 2 stamp booklets; 3 different colour separations; 2 different modern NZ printing varieties; 6d Express Delivery used and 2006 Kiwipex Palmares ovpt miniature sheet uhm.	\$250

## Overseas Stamps

2807	U	New South Wales 1897 Diamond Jubilee & Hospital Charity set superb used. SG 280-281, cat £275.	\$200
2808	*	Australia 1956 Olympic Games 1/-, a mind-boggling error: angularly mis-perforated (full perms). Fresh, MUH with minor wrinkling as on all known examples, Brusden White 334b cat A\$2000.	\$1,000
2809	*	Australia 2005 \$5 Treasures From the Archives, framed uncut imperforate sheet (# 14/500) muh, and a horizontal imperf sheet number (457/500) pair, muh. Also, New Zealand 2008 Tarapex uncut proof sheet of 10 (& 3 imperf singles) x QV 1½d postal stationery postcard featuring Waikite Geyser, & Otira Gorge etc.	\$450
2810	C	Christmas Island (Central Pacific) 1936 cover to USA bearing 10c Coconut Plantations Ltd Mail Boat Service stamp cancelled 28 May 1936, 1.50 Fr. Oceanic Settlements PAQUET BOAT cancel & MARINE POST OFFICE / R.M.S. MAKURA 14 July 1936 cancel. Pencil note on rear REC 7-29-1936.	\$200
2811	/	Cook Islands 1890-1997 sel'n of 45v, m/muh/u. Cat £345+.	\$135
2812	C	Gilbert & Ellice Islands 1950 underpaid air mail cover to Auckland, NZ, bearing 1d, 2d, 3d UPU & 6d GVI, circled orange T / 10d tax indicator, red TO PAY / d / DEFICIENT POSTAGE h/s on front, with 10 inserted in pencil. Rear bears 3d pair 3rd series (s/ws wmk) postage dues & 1/- GVI x 7, cancelled 27 February 1950, Auckland. 7/6d charged being bulk postage due for 9 underpaid items. SG 686 & D47aw.	\$250
2813	C	Great Britain 1810-1840 a study of town postmarks on 53 entires, many to Inverness, on 29 pages, and an additional 13 loose entires.	\$1,250
2814	U	Great Britain 1841 1d red: shoe box containing approx. 3,000 v – all appear used, imperf & mostly off paper – genuinely unsorted by us, however 1 inverted wmk (SG ?400) is in glassine on underside of lid.	\$1,500
2815	*	Great Britain c1982 selection of muh prestige booklet pane phosphor shift errors etc: 2p x 6 [SG specialised UEP7b]; 12p x 9 [SG UEP5c]; 12½p x 7, 2p & 3p [SG UEP11b]; 13p x 6 [SG UEP18b]; 15½p strip of 3 + part rates pane [ex SG UEP12b]; 2½p x 2 + 3p x 2 {SG UEP2c}. Also, demonstration window booklet - red outers + gummed perforated pane of four unprinted stamps.	\$1,250

## Miscellaneous

2816	/	Holograms & 3-D stamps. Accumulation of 40 stamps & 39 min sheets, 1 booklet, muh; 11 covers & 3 miscellaneous items.	\$200
------	---	---	-------



# Thinking of Selling?

Mowbray Collectables offer you two proven and successful ways to market the sale of your collection or single rare item:

- **Our Annual International Public Auction** - *New Zealand's premier stamp sales event with a \$1M+ turnover.*
- **Private Treaty Sales** - *offering direct sales to our clients at an agreed price.*

We sell more stamps worldwide than any other company in New Zealand, and have the largest mailing list in Australasia.

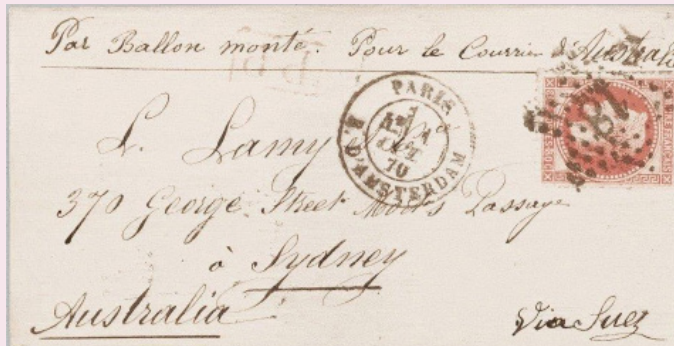
We are now accepting material for our 2019 sales. If you wish to take advantage of New Zealand's number one selling opportunity, contact us now.

Contact John Mowbray or Chris Burtt at our Otaki office - see below.

Or for South Island enquiries, contact our Christchurch based Manager, Alan Jackson, phone +64 3 343 6398, or contact David Smitham by email at [davidsmitham@mowbrays.co.nz](mailto:davidsmitham@mowbrays.co.nz)



1918 Inverted Jenny,  
sold for \$125,000



1870 Siege of Paris balloon cover sold for \$238,625



1903 4d Taupo inverted  
centre - we negotiated  
the sale at \$125,000

The market has never been stronger for quality material.

We have sold over \$50 million worth of collections on behalf of 5,000 satisfied vendors.



## MOWBRAY COLLECTABLES

Private Bag 63000, Wellington 6140, New Zealand

Phone +64 6 364 8270, fax +64 6 364 8250

Email [auctions@mowbrays.co.nz](mailto:auctions@mowbrays.co.nz)

Website [www.mowbraycollectables.com](http://www.mowbraycollectables.com)



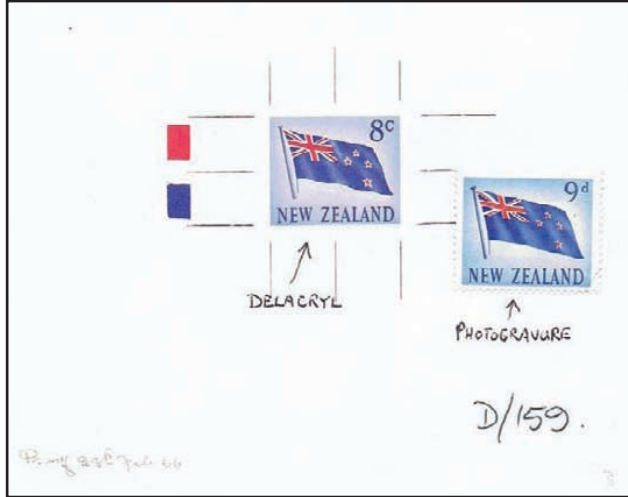
2611



2613



2614



2616



2617



2621



2604



Ex 2624



Ex 2615



2625



Ex 2629



2630



2631



Ex 2628



Ex 2632



Ex2633



Ex 2634



Ex 2635



Ex 2636



2637



Ex 2638



2646



2655



2640



2642



2644



2645



Ex 2641



2650



2651



2652



Ex 2653



Ex 2654



2656



Ex 2660



Ex 2661



Ex 2663



2662



2665



Ex 2667



2725



2726



2527



2664



2666



Ex 2668



Ex 2672



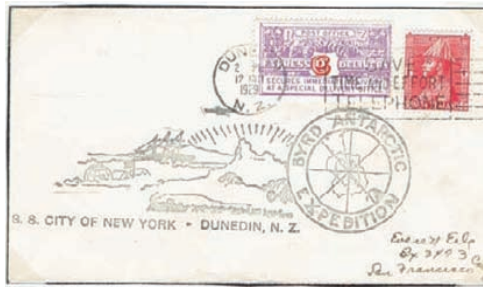
2670



2730



2669



Ex 2673



Ex 2667



Ex 2678



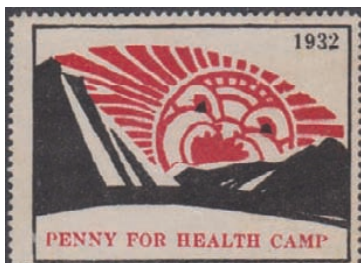
Ex 2679



2682



Ex 2684



2696



2705



2706



2708



2681



2683



2685

2686



2687



2690



2691



Ex 2694



2695



Ex 2700



Ex 2699



Ex 2702



2703



2731



2737



Ex 2741



2712



Ex 2707



Ex 2713



2719

2723



2709



2734



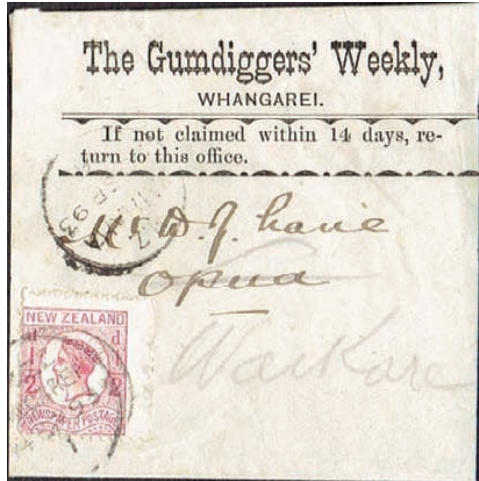
2736



2735



Ex 2767



Ex 2720



2721



2744



2739



2746



2752



2761



2747



Ex 2751



2756



Ex 2763



2768



Ex 2757



Ex 2758



2781



Ex 2784



Ex 2785



Ex 2788



Ex 2789



Ex 2792



Ex 2794



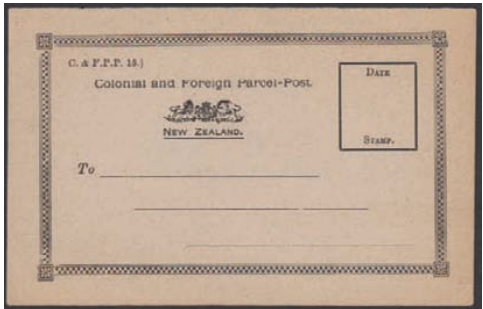
Ex 2796



Ex 2799



2805



Ex 2800



Ex 2807



2808



2765



2769



2770



2801



2803



Ex 2802